

EXHIBIT F



US008004389B1

(12) **United States Patent**
Mui

(10) **Patent No.:** **US 8,004,389 B1**
(45) **Date of Patent:** ***Aug. 23, 2011**

(54) **RELAYING KEY CODE SIGNALS THROUGH A REMOTE CONTROL DEVICE**

(75) Inventor: **Daniel SauFu Mui**, San Jose, CA (US)

(73) Assignee: **UEI Cayman Inc.** (KY)

(*) Notice: Subject to any disclaimer, the term of this patent is extended or adjusted under 35 U.S.C. 154(b) by 16 days.

This patent is subject to a terminal disclaimer.

5,595,342 A	1/1997	McNair et al.	236/51
5,671,267 A	9/1997	August et al.	379/61
5,963,624 A	10/1999	Pope	379/110.01
6,747,568 B1	6/2004	Teskey	340/825.72
6,819,259 B2	11/2004	Yamaguchi	340/825.69
6,915,109 B2	7/2005	Wouters et al.	455/45
7,525,855 B2	4/2009	Kagan	365/189.17
2002/0130803 A1	9/2002	Conway et al.	341/176
2005/0151726 A1	7/2005	Wouters	345/172

Primary Examiner — Vernal Brown

(74) Attorney, Agent, or Firm — Imperium Patent Works; Darien K. Wallace

(21) Appl. No.: **12/462,526**

(22) Filed: **Aug. 4, 2009**

Related U.S. Application Data

(63) Continuation of application No. 10/737,029, filed on Dec. 16, 2003, now Pat. No. 7,589,642.

(51) **Int. Cl.**
G08C 19/02 (2006.01)

(52) **U.S. Cl.** **340/13.24**; 340/4.62; 340/5.61

(58) **Field of Classification Search** 340/825.69, 340/825.22, 5.61, 4.62; 341/176, 174
See application file for complete search history.

(56) **References Cited**

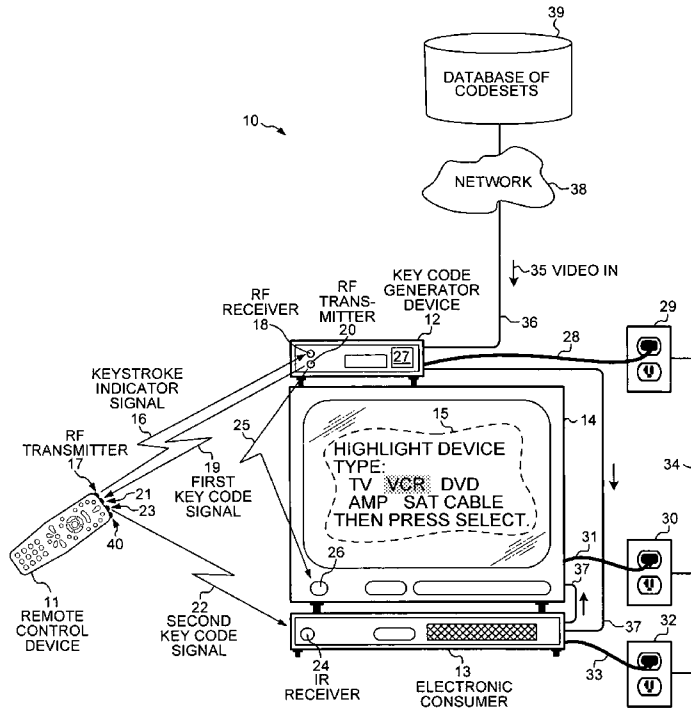
U.S. PATENT DOCUMENTS

4,005,428 A	1/1977	Graham	340/825.75
5,410,326 A	4/1995	Goldstein	348/134

(57) **ABSTRACT**

Upon receiving a keystroke indicator signal from a remote control device, a key code generator device identifies a codeset usable to communicate with a selected consumer device. The keystroke indicator signal contains an indication of a pressed key, which corresponds to a function of the selected consumer device. Using the identified codeset and the key indication, the key code generator device generates a key code and modulates that key code onto a radio frequency carrier signal, thereby generating a first key code signal. The remote control device receives the first key code signal from the key code generator device and modulates the key code onto an infrared frequency carrier signal, thereby generating a second key code signal. The remote control device relays the key code to the selected consumer device in the second key code signal. The key code causes the selected consumer device to perform the desired function.

16 Claims, 4 Drawing Sheets



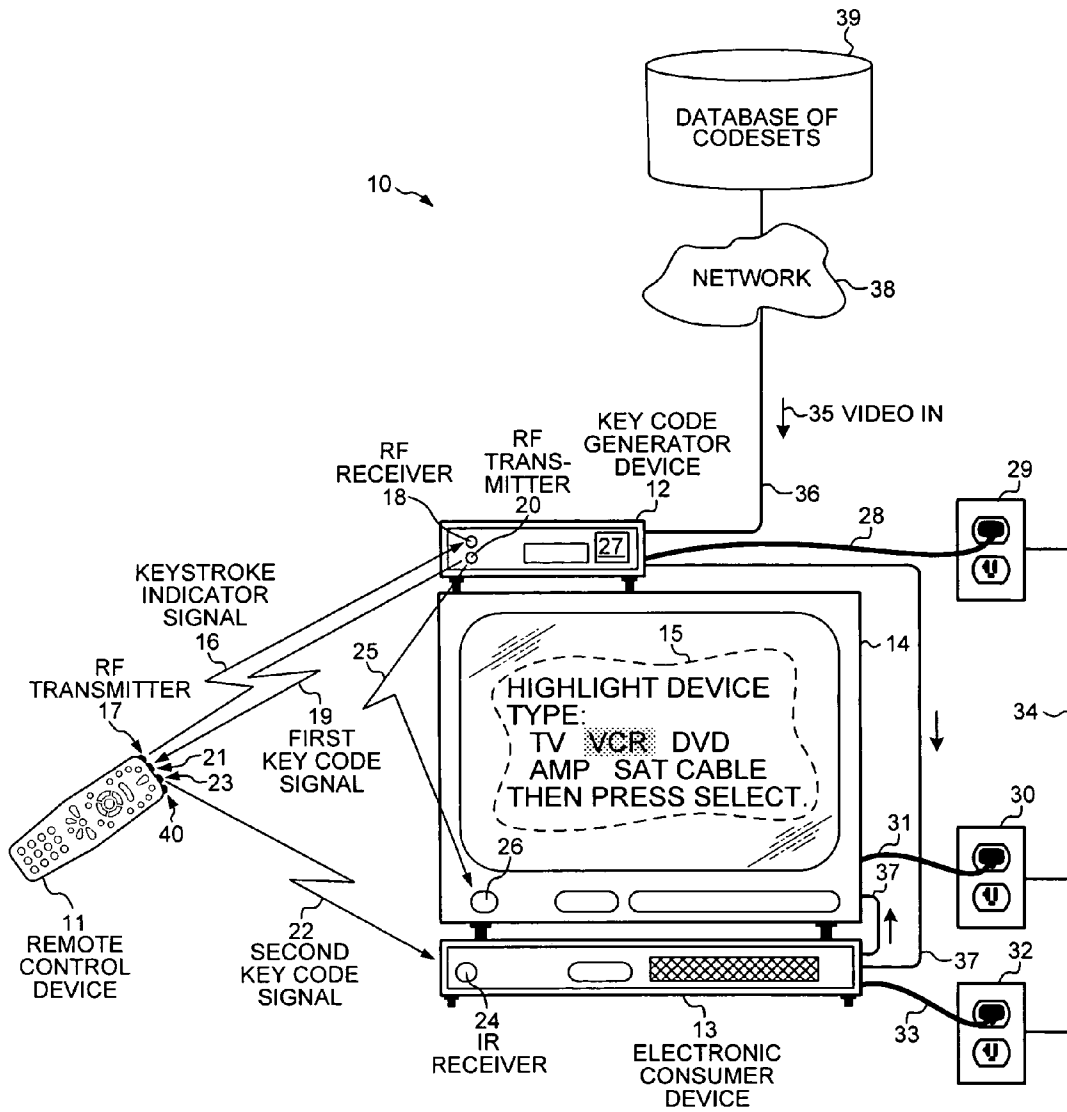


FIG. 1

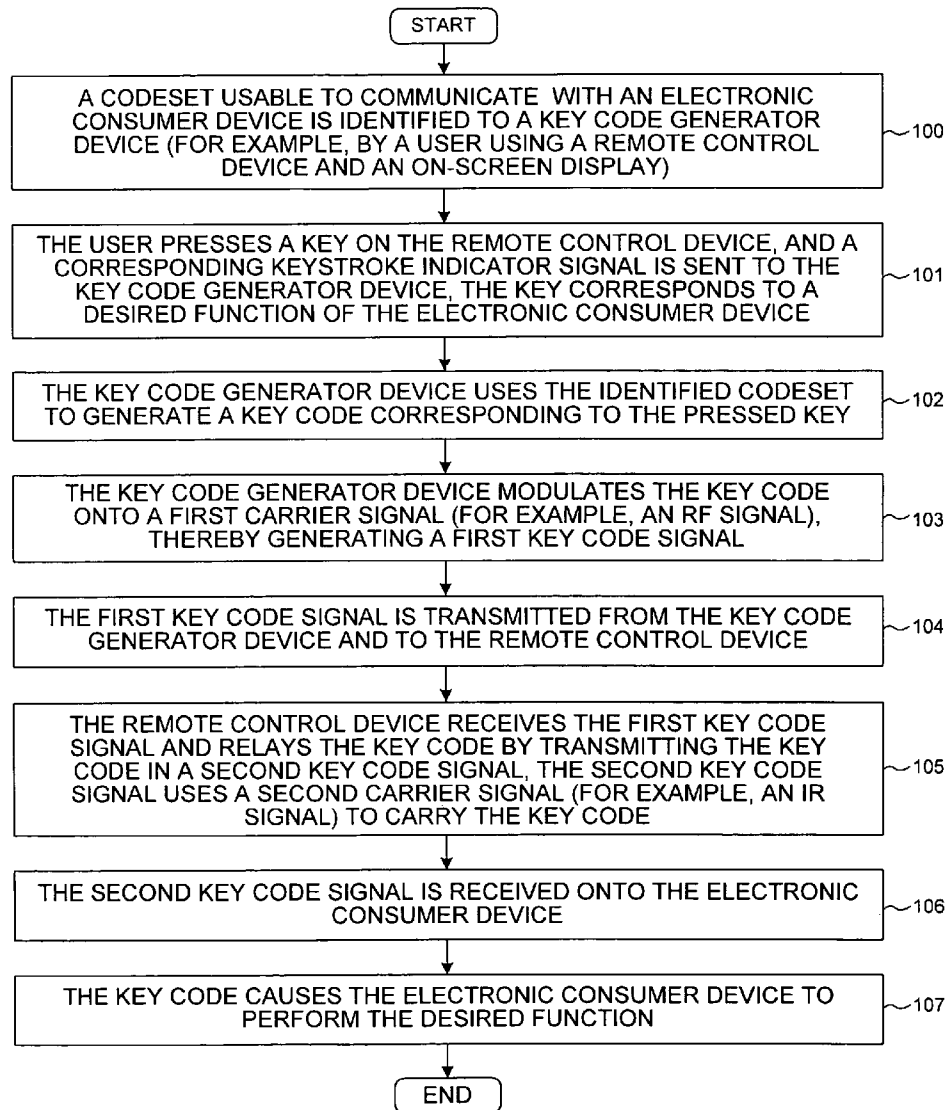


FIG. 2

0 1 0 1 0 0 0 1 1 1 0 0
 SYSTEM CODE KEY DATA

KEY CODE
 FIG. 3

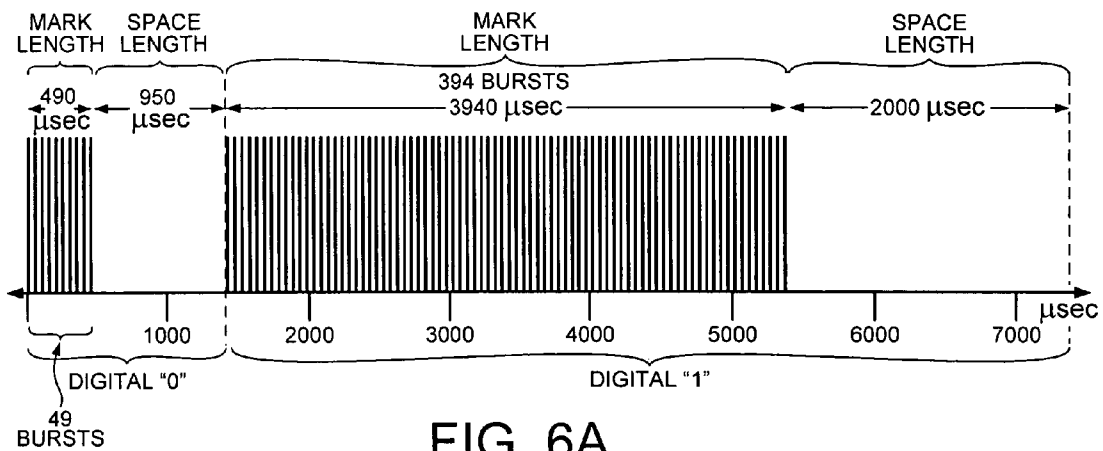


FIG. 6A

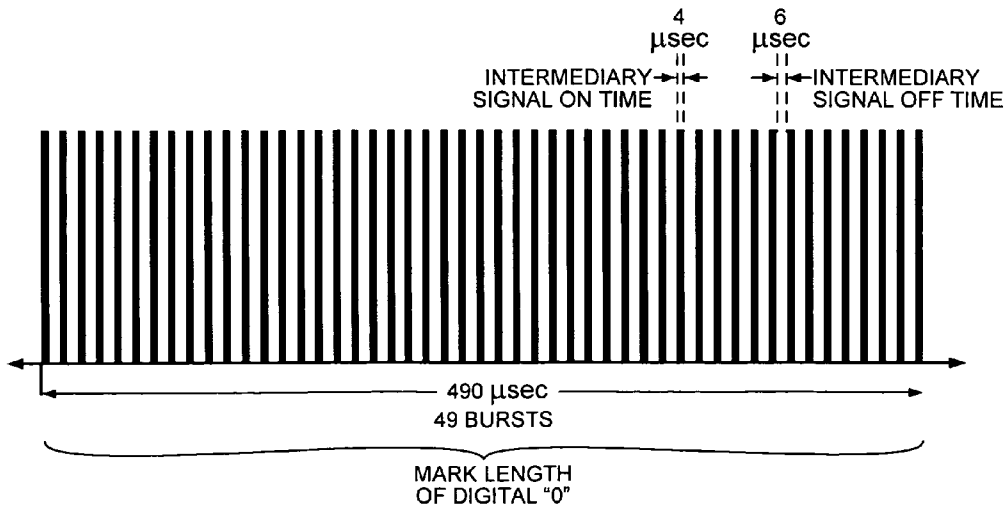


FIG. 6B

Explore Litigation Insights

Docket Alarm provides insights to develop a more informed litigation strategy and the peace of mind of knowing you're on top of things.

Real-Time Litigation Alerts



Keep your litigation team up-to-date with **real-time alerts** and advanced team management tools built for the enterprise, all while greatly reducing PACER spend.

Our comprehensive service means we can handle Federal, State, and Administrative courts across the country.

Advanced Docket Research



With over 230 million records, Docket Alarm's cloud-native docket research platform finds what other services can't. Coverage includes Federal, State, plus PTAB, TTAB, ITC and NLRB decisions, all in one place.

Identify arguments that have been successful in the past with full text, pinpoint searching. Link to case law cited within any court document via Fastcase.

Analytics At Your Fingertips



Learn what happened the last time a particular judge, opposing counsel or company faced cases similar to yours.

Advanced out-of-the-box PTAB and TTAB analytics are always at your fingertips.

API

Docket Alarm offers a powerful API (application programming interface) to developers that want to integrate case filings into their apps.

LAW FIRMS

Build custom dashboards for your attorneys and clients with live data direct from the court.

Automate many repetitive legal tasks like conflict checks, document management, and marketing.

FINANCIAL INSTITUTIONS

Litigation and bankruptcy checks for companies and debtors.

E-DISCOVERY AND LEGAL VENDORS

Sync your system to PACER to automate legal marketing.