

EXHIBIT A

(12) **United States Patent**
Rempell

(10) **Patent No.:** **US 6,546,397 B1**
(45) **Date of Patent:** **Apr. 8, 2003**

(54) **BROWSER BASED WEB SITE GENERATION TOOL AND RUN TIME ENGINE**

6,148,311 A * 11/2000 Wishnie et al. 707/513
6,191,786 B1 * 2/2001 Eyzaguirre et al. 345/853

(76) Inventor: **Steven H. Rempell**, 38 Washington St.,
Novato, CA (US) 94947

OTHER PUBLICATIONS

(*) Notice: Subject to any disclaimer, the term of this patent is extended or adjusted under 35 U.S.C. 154(b) by 0 days.

Piero Fraternali, "Tools and Approaches for Developing Data-Intensive Web Applications: A Survey", ACM Sep. 1999, pp. 226-263.*

Balusubramanian et al A Large-Scale Hypermedia Application using Document Management and Web Technologies, ACM 1997, pp. 134-145.*

(21) Appl. No.: **09/454,061**

* cited by examiner

(22) Filed: **Dec. 2, 1999**

Primary Examiner—Safet Metjahic

(51) **Int. Cl.**⁷ **G06F 17/00**; G06T 13/00

Assistant Examiner—Uyen Le

(52) **U.S. Cl.** **707/102**; 707/104.1; 707/501.1;
345/700; 345/473

(74) *Attorney, Agent, or Firm*—Coudert Brothers LLP

(58) **Field of Search** 707/102, 103,
707/104, 501, 513, 517, 530, 104.1, 501.1;
345/333, 967, 326, 339, 348, 352, 700,
473

(57) **ABSTRACT**

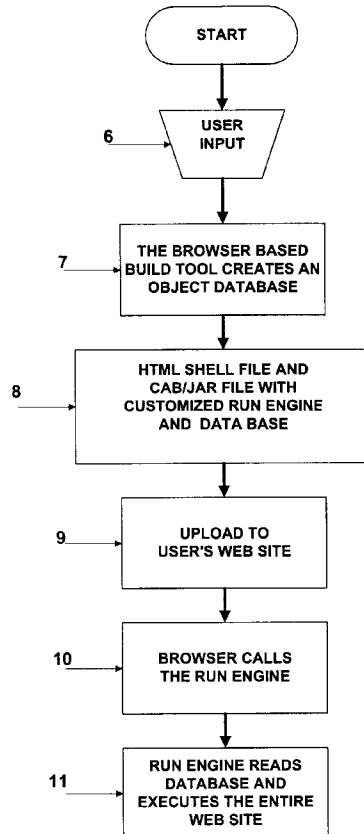
A method and apparatus for designing and building a web page. The apparatus includes a browser based build engine including build tools and a user interface. The build tools are operable to construct a single run time file and an associated database that describe, and when executed, produce the web page. The user interface includes a build frame and a panel. The build frame is operable to receive user input and present a WYSIWIG representation of the web page. The panel includes one or more menus for controlling the form of content to be placed on the web page.

(56) **References Cited**

U.S. PATENT DOCUMENTS

5,428,731 A * 6/1995 Powers, III 707/501
5,842,020 A * 11/1998 Faustini 395/701
5,870,767 A * 2/1999 Kraft, IV 707/501
6,035,119 A * 3/2000 Massa et al. 717/100
6,081,263 A * 6/2000 LeGall et al. 345/327
6,083,276 A * 7/2000 Davidson et al. 717/1

39 Claims, 68 Drawing Sheets



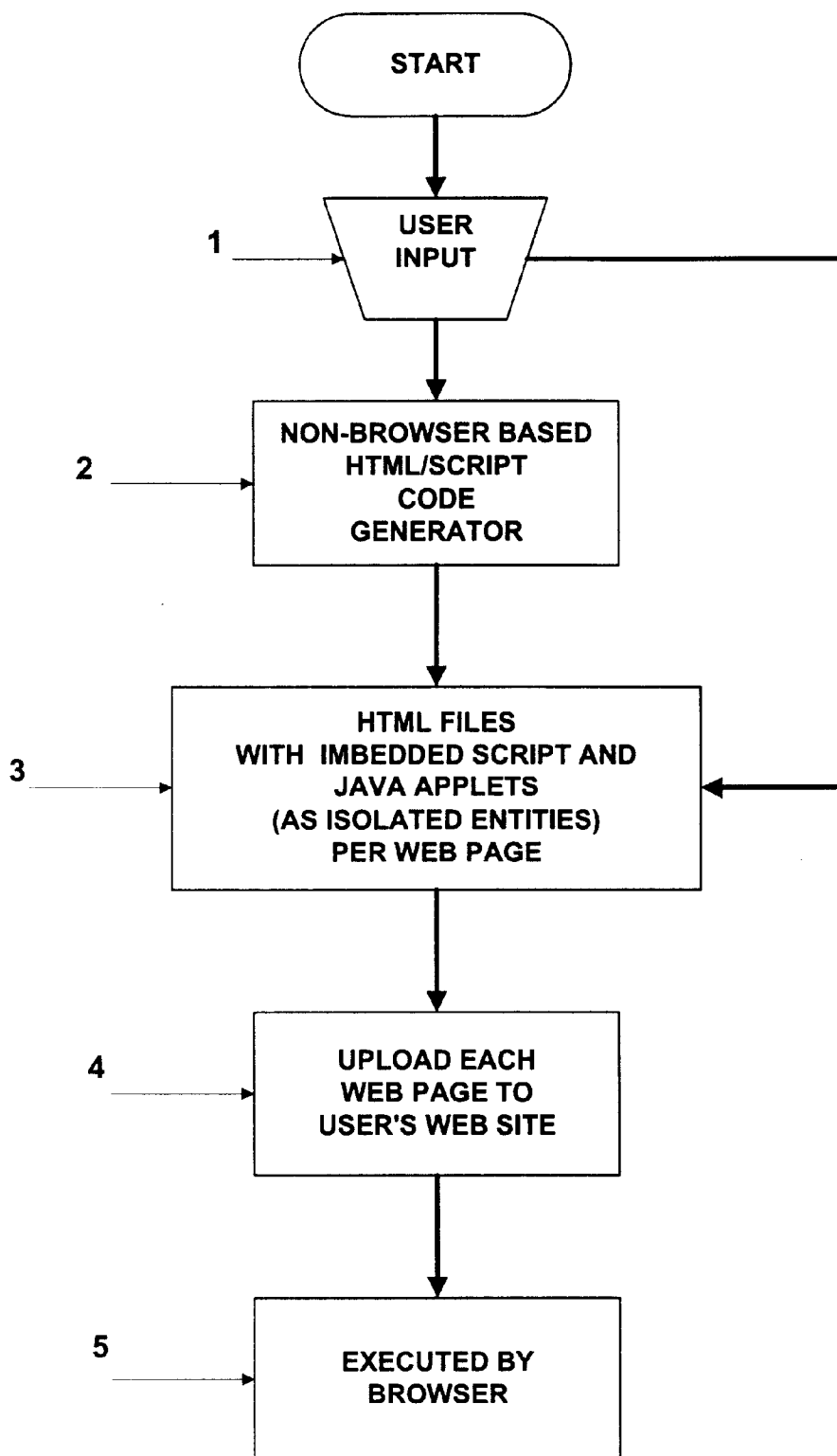


Fig. 1

PRIOR ART

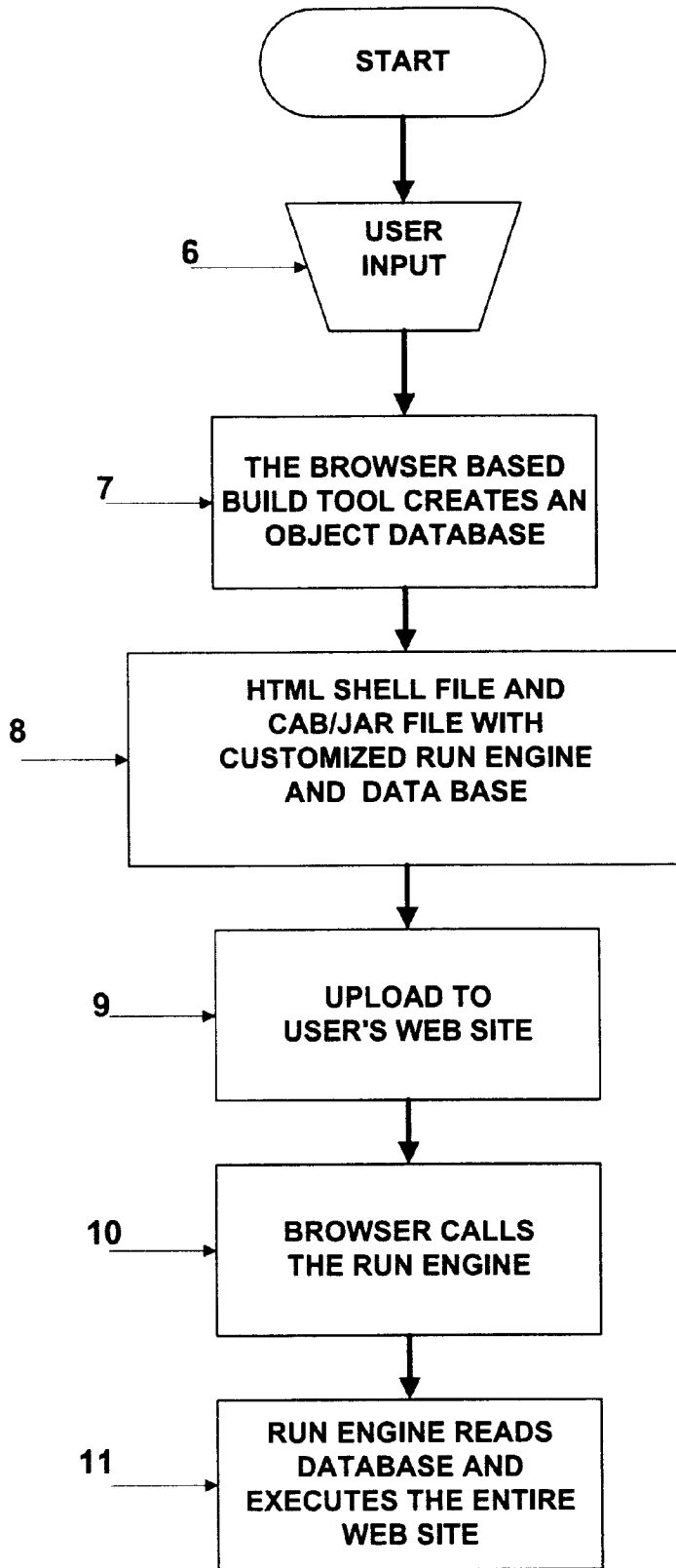


Fig. 2

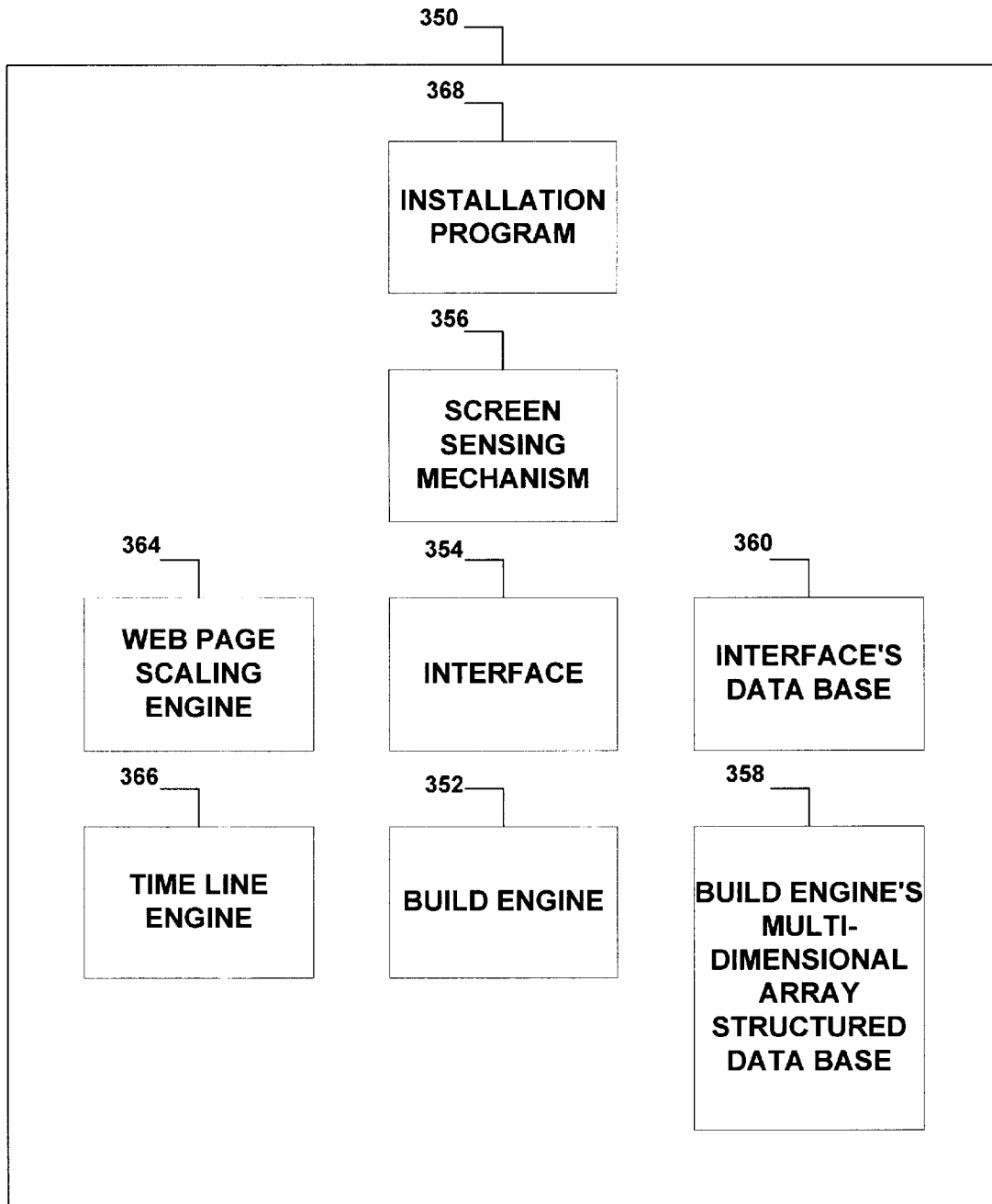


Fig. 3a

BUILD TOOL COMPONENTS

Explore Litigation Insights

Docket Alarm provides insights to develop a more informed litigation strategy and the peace of mind of knowing you're on top of things.

Real-Time Litigation Alerts



Keep your litigation team up-to-date with **real-time alerts** and advanced team management tools built for the enterprise, all while greatly reducing PACER spend.

Our comprehensive service means we can handle Federal, State, and Administrative courts across the country.

Advanced Docket Research



With over 230 million records, Docket Alarm's cloud-native docket research platform finds what other services can't. Coverage includes Federal, State, plus PTAB, TTAB, ITC and NLRB decisions, all in one place.

Identify arguments that have been successful in the past with full text, pinpoint searching. Link to case law cited within any court document via Fastcase.

Analytics At Your Fingertips



Learn what happened the last time a particular judge, opposing counsel or company faced cases similar to yours.

Advanced out-of-the-box PTAB and TTAB analytics are always at your fingertips.

API

Docket Alarm offers a powerful API (application programming interface) to developers that want to integrate case filings into their apps.

LAW FIRMS

Build custom dashboards for your attorneys and clients with live data direct from the court.

Automate many repetitive legal tasks like conflict checks, document management, and marketing.

FINANCIAL INSTITUTIONS

Litigation and bankruptcy checks for companies and debtors.

E-DISCOVERY AND LEGAL VENDORS

Sync your system to PACER to automate legal marketing.