



US008275734B1

(12) **United States Patent**
Bridgman

(10) **Patent No.:** **US 8,275,734 B1**
(45) **Date of Patent:** **Sep. 25, 2012**

(54) **SYSTEMS AND METHODS FOR RETURNED MAIL**

2003/0055791 A1* 3/2003 Bodie et al. 705/62
2005/0049890 A1 3/2005 Kan
2006/0112024 A1 5/2006 Wadd et al.

(75) Inventor: **Ed Bridgman**, Boerne, TX (US)

OTHER PUBLICATIONS

(73) Assignee: **United Services Automobile Association (USAA)**, San Antonio, TX (US)

"Improving Parcel & Postal Operations with Bar Code Printing", A Zebra Black & White Paper, 2007, 12 pages.

* cited by examiner

(*) Notice: Subject to any disclaimer, the term of this patent is extended or adjusted under 35 U.S.C. 154(b) by 657 days.

Primary Examiner — Jeffrey A Gaffin

Assistant Examiner — Nathan Brown, Jr.

(74) *Attorney, Agent, or Firm* — Brooks, Cameron & Huebsch, PLLC

(21) Appl. No.: **12/479,227**

(57) **ABSTRACT**

(22) Filed: **Jun. 5, 2009**

A system, method, and computer-usable medium are disclosed for providing automated processing of returned mailpieces. Recipient data and mailpiece data are processed to generate a mailpiece operation rule, all of which are then encoded to generate a unique identifier. The unique identifier is then indexed to its corresponding recipient data, mailpiece data, and mailpiece operation rule and thereafter associated with a corresponding mailpiece, which is then sent to an intended recipient. If the sent mailpiece is undeliverable to its intended recipient, it is returned and its unique identifier is scanned and then decoded to extract its corresponding recipient data, mailpiece data, and mailpiece operation rule. The extracted mailpiece operation rule is then processed to initiate a corresponding returned mailpiece operation.

(51) **Int. Cl.**
G06N 5/02 (2006.01)
G06N 5/04 (2006.01)

(52) **U.S. Cl.** **706/47; 706/48**

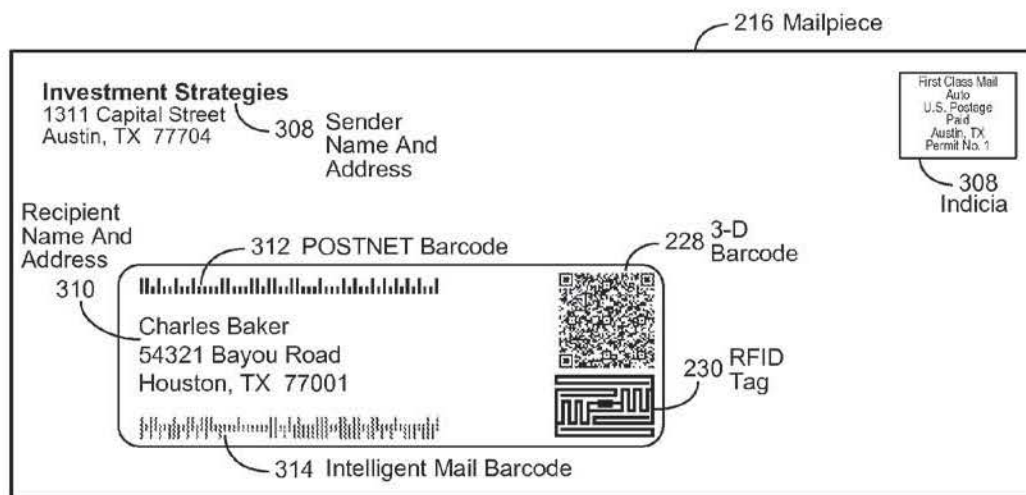
(58) **Field of Classification Search** **706/47**
See application file for complete search history.

(56) **References Cited**

U.S. PATENT DOCUMENTS

6,791,050 B2 9/2004 Daniels, Jr. et al.
6,801,833 B2* 10/2004 Pintsov et al. 700/223
6,826,548 B2* 11/2004 Hungerpillar et al. 705/401

19 Claims, 7 Drawing Sheets



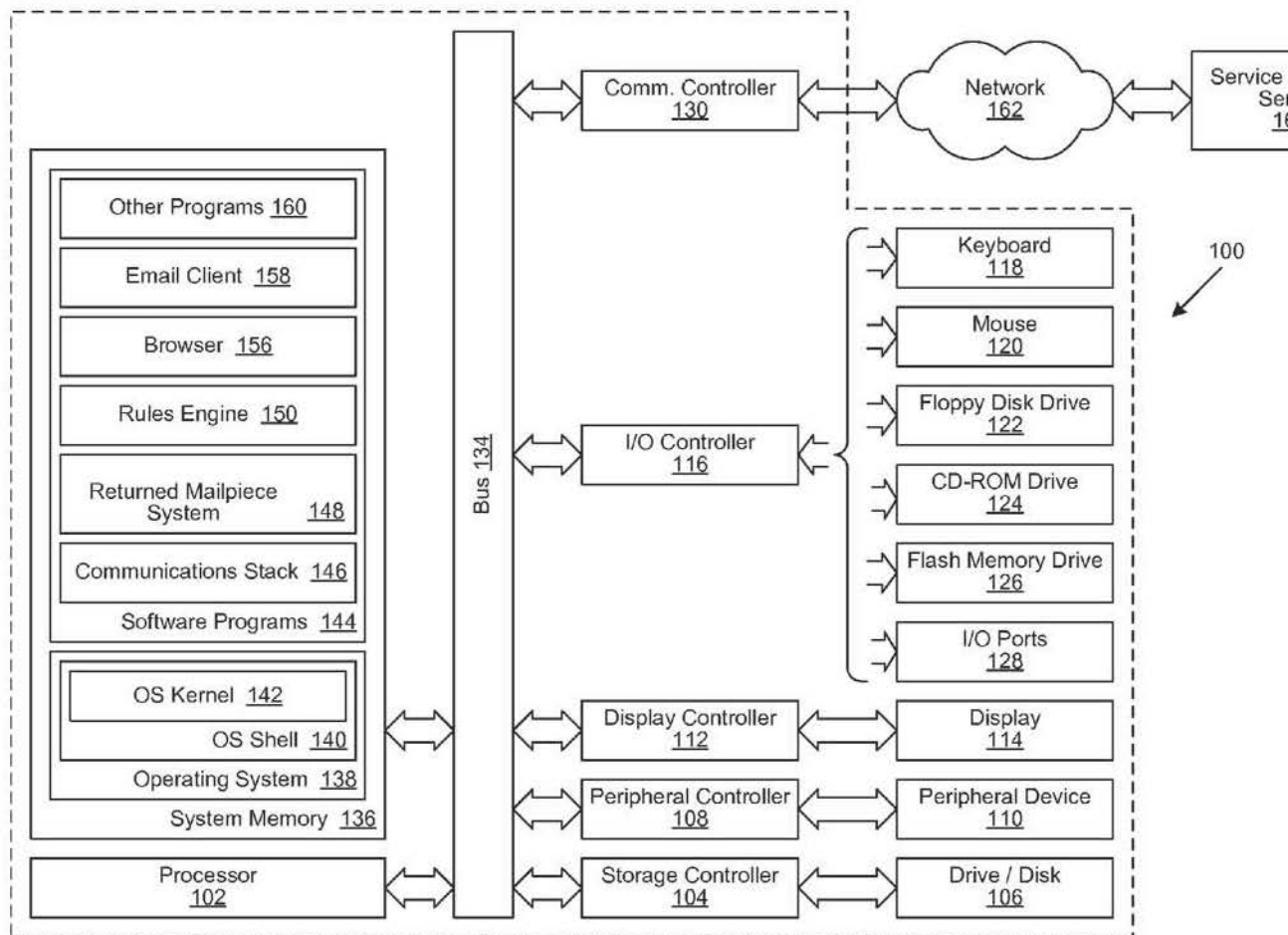


FIGURE 1

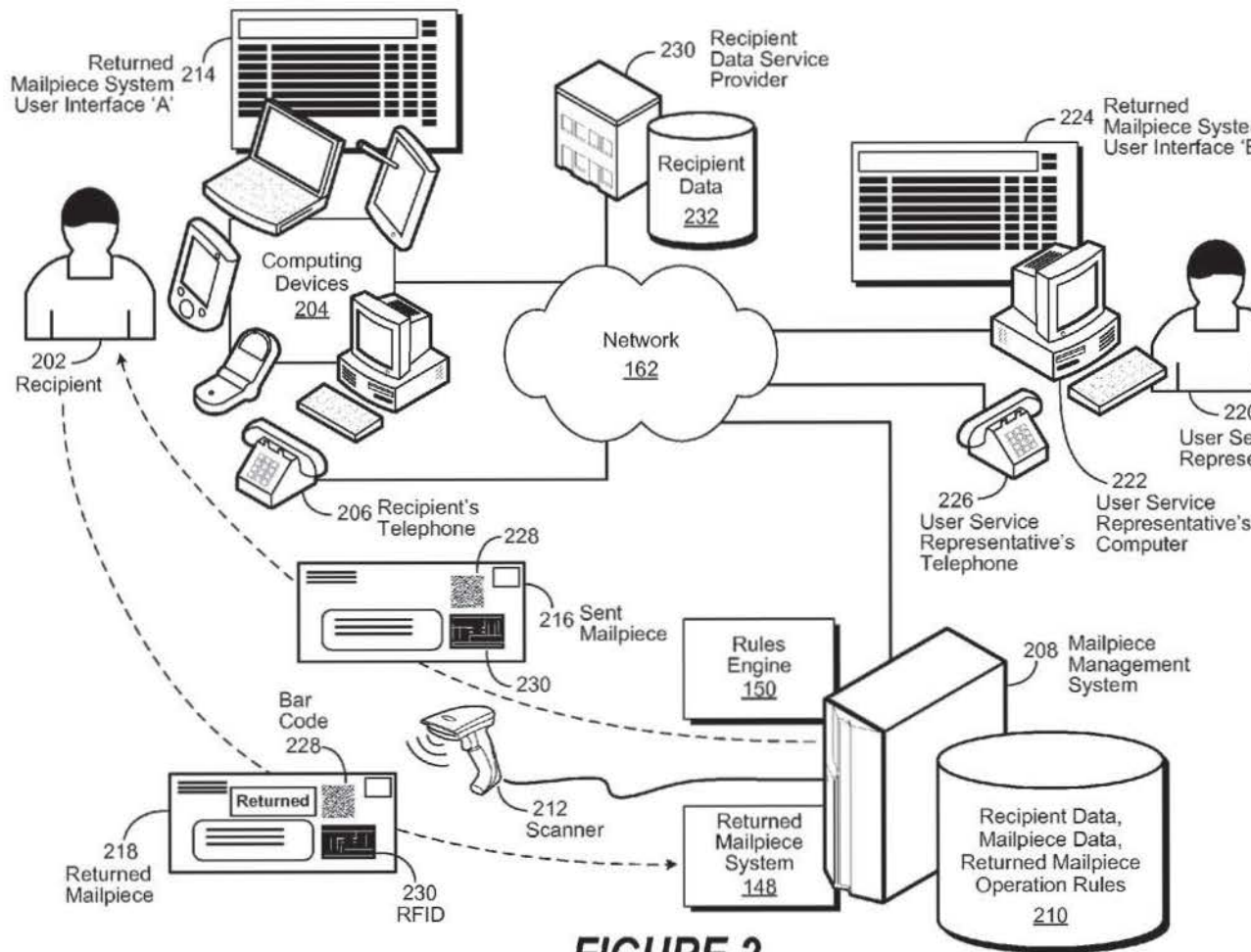


FIGURE 2

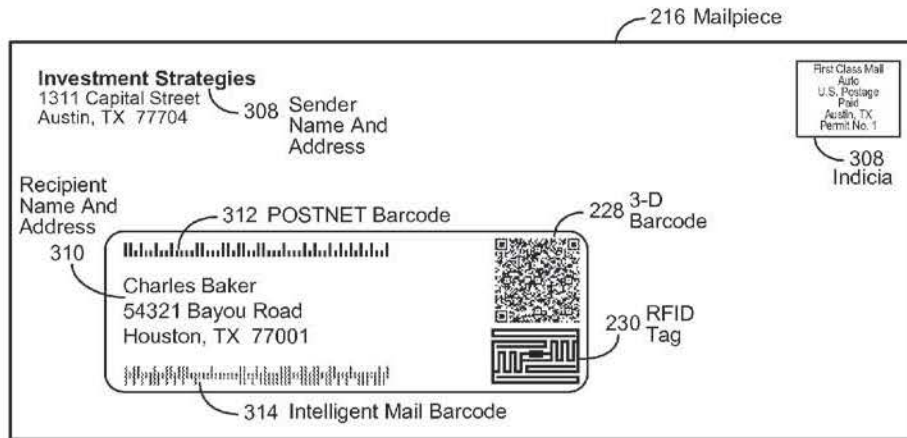


FIGURE 3

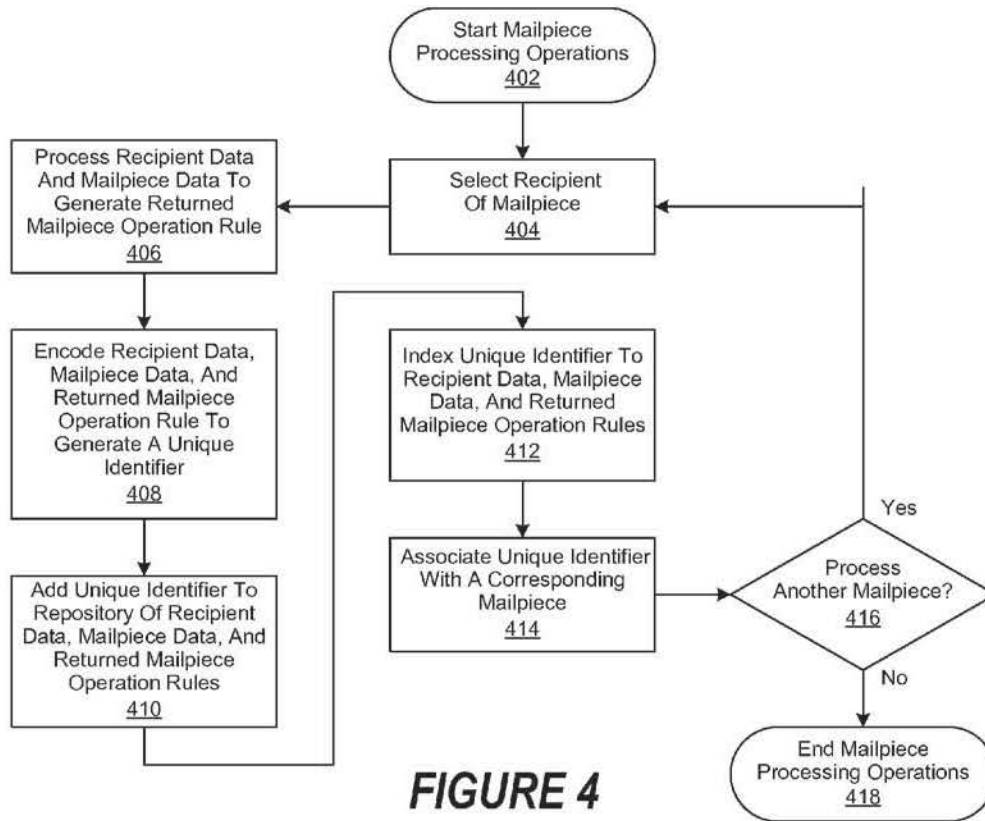


FIGURE 4

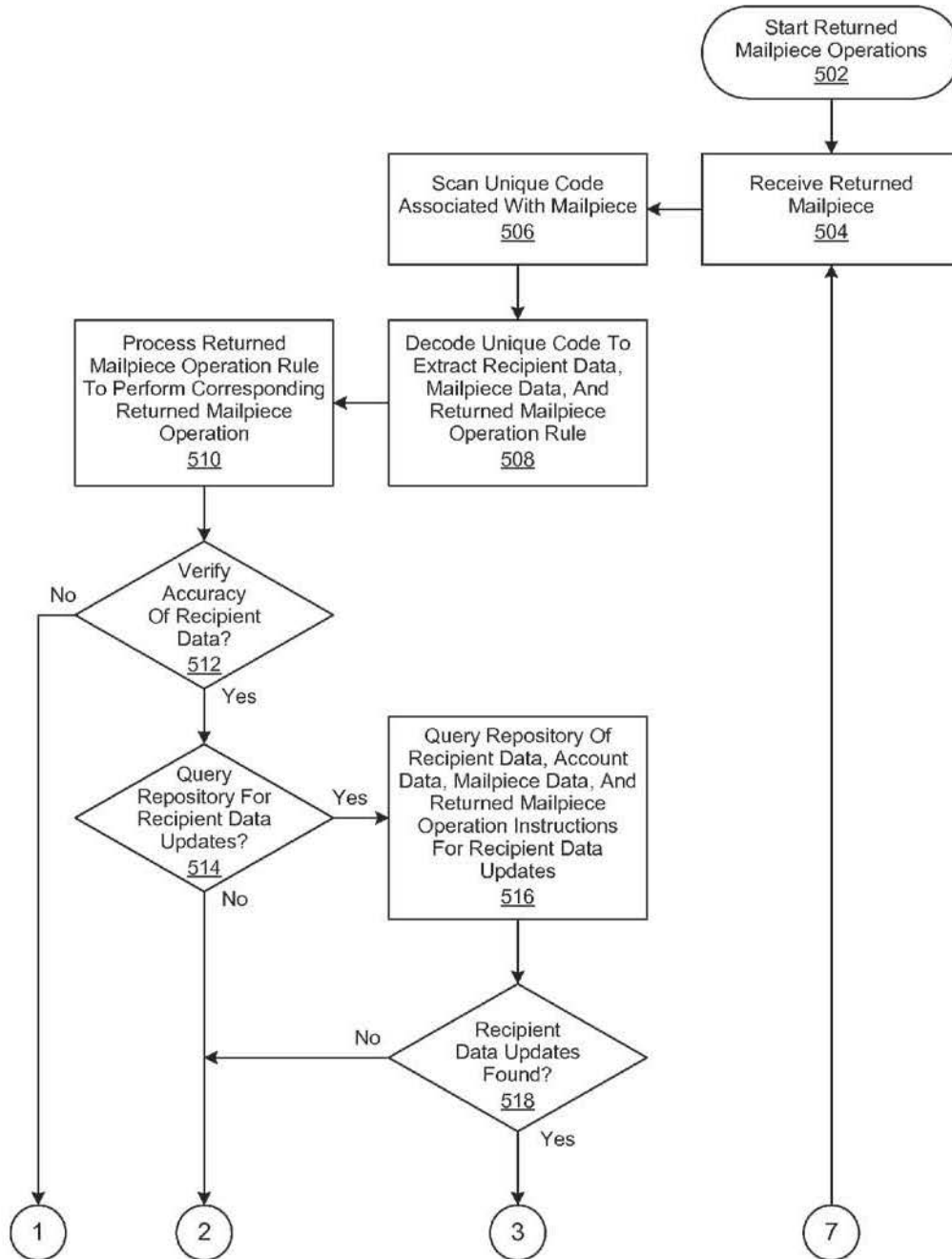


FIGURE 5a

Explore Litigation Insights

Docket Alarm provides insights to develop a more informed litigation strategy and the peace of mind of knowing you're on top of things.

Real-Time Litigation Alerts



Keep your litigation team up-to-date with **real-time alerts** and advanced team management tools built for the enterprise, all while greatly reducing PACER spend.

Our comprehensive service means we can handle Federal, State, and Administrative courts across the country.

Advanced Docket Research



With over 230 million records, Docket Alarm's cloud-native docket research platform finds what other services can't. Coverage includes Federal, State, plus PTAB, TTAB, ITC and NLRB decisions, all in one place.

Identify arguments that have been successful in the past with full text, pinpoint searching. Link to case law cited within any court document via Fastcase.

Analytics At Your Fingertips



Learn what happened the last time a particular judge, opposing counsel or company faced cases similar to yours.

Advanced out-of-the-box PTAB and TTAB analytics are always at your fingertips.

API

Docket Alarm offers a powerful API (application programming interface) to developers that want to integrate case filings into their apps.

LAW FIRMS

Build custom dashboards for your attorneys and clients with live data direct from the court.

Automate many repetitive legal tasks like conflict checks, document management, and marketing.

FINANCIAL INSTITUTIONS

Litigation and bankruptcy checks for companies and debtors.

E-DISCOVERY AND LEGAL VENDORS

Sync your system to PACER to automate legal marketing.