



US008386516B2

(12) **United States Patent**  
**Owens et al.**

(10) **Patent No.:** **US 8,386,516 B2**  
(45) **Date of Patent:** **\*Feb. 26, 2013**

(54) **REGISTRATION AND MAINTENANCE OF ADDRESS DATA FOR EACH SERVICE POINT IN A TERRITORY**

(75) Inventors: **Timothy C. Owens**, New Freedom, PA (US); **Duane Anderson**, Cockeysville, MD (US)  
(73) Assignee: **United Parcel Service of America, Inc.**, Atlanta, GA (US)

5,262,939	A	11/1993	Vanpoucke
5,387,783	A	2/1995	Mihm et al.
5,422,821	A	6/1995	Allen et al.
5,452,203	A	9/1995	Moore
5,710,917	A	1/1998	Musa et al.
5,754,671	A	5/1998	Higgins et al.
5,758,574	A	6/1998	Bernardo et al.
5,905,666	A	5/1999	Hoffman et al.
5,953,427	A	9/1999	Cordery et al.
5,963,642	A	10/1999	Goldstein
5,978,792	A	11/1999	Bhargava et al.
6,131,101	A	10/2000	Maitino et al.

(\* ) Notice: Subject to any disclaimer, the term of this patent is extended or adjusted under 35 U.S.C. 154(b) by 0 days.

This patent is subject to a terminal disclaimer.

(Continued)

**FOREIGN PATENT DOCUMENTS**

EP	1197885	12/2001
JP	408323299	12/1996

(Continued)

(21) Appl. No.: **13/047,565**

(22) Filed: **Mar. 14, 2011**

(65) **Prior Publication Data**

US 2011/0208725 A1 Aug. 25, 2011

**Related U.S. Application Data**

(63) Continuation of application No. 12/270,665, filed on Nov. 13, 2008, now Pat. No. 7,912,854, which is a continuation of application No. 11/342,041, filed on Jan. 27, 2006, now Pat. No. 7,542,972.

(60) Provisional application No. 60/648,577, filed on Jan. 28, 2005.

(51) **Int. Cl.**  
**G06F 17/30** (2006.01)

(52) **U.S. Cl.** ..... **707/776**

(58) **Field of Classification Search** ..... **707/776,**  
**707/756, 603**

See application file for complete search history.

(56) **References Cited**

**U.S. PATENT DOCUMENTS**

4,832,204	A	5/1989	Handy et al.
4,839,813	A	6/1989	Hills et al.

**OTHER PUBLICATIONS**

PRC Notification of the First Office Action for Chinese Application No. 200680006166.8 mailed Apr. 2, 2010.

(Continued)

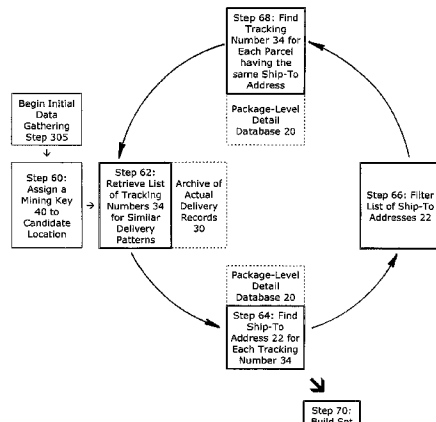
*Primary Examiner* — Sherief Badawi

(74) *Attorney, Agent, or Firm* — Alston & Bird LLP

(57) **ABSTRACT**

A computer system and method is disclosed for mining current and archived address data in order to identify a preferred address for each service point in a territory. The data mining system may start in response to the presentation of a candidate address for matching. The set of mined data may be prioritized by clustering like characteristics, building similarity matrices, and by constructing dendrograms with nodes joined according to common characteristics. A computer system and method for maintaining a central database of preferred addresses is also disclosed. Selected address data gathered in a queue may be scored by characteristic, grouped by consignee location, and staged for processing. The scored queue of data may be prioritized by clustering like characteristics, building similarity matrices, and by constructing dendrograms.

**28 Claims, 62 Drawing Sheets**



U.S. PATENT DOCUMENTS

6,205,447	B1	3/2001	Malloy	
6,253,219	B1	6/2001	Gardner et al.	
6,285,916	B1	9/2001	Kadaba et al.	
6,321,992	B1	11/2001	Knowles et al.	
6,438,579	B1	8/2002	Hosken	
6,439,783	B1	8/2002	Anotshenkov	
6,456,998	B1	9/2002	Bui et al.	
6,457,012	B1	9/2002	Jatkowski	
6,463,420	B1	10/2002	Guidice et al.	
6,487,549	B1	11/2002	Amundsen	
6,502,089	B1	12/2002	Amundsen et al.	
6,507,835	B1	1/2003	Amundsen et al.	
6,557,000	B1	4/2003	Seestrom et al.	
6,564,204	B1	5/2003	Amundsen et al.	
6,575,376	B2	6/2003	Yu	
6,647,385	B2	11/2003	Seestrom et al.	
6,681,391	B1	1/2004	Marino	
6,772,130	B1	8/2004	Karbowski et al.	
6,826,548	B2	11/2004	Hungerpilller et al.	
6,873,963	B1	3/2005	Westbury et al.	
6,931,418	B1	8/2005	Barnes	
7,069,253	B2	6/2006	Leon	
7,213,748	B2*	5/2007	Tsuei et al. ....	235/380
7,664,653	B2*	2/2010	Dearing .....	705/330
2001/0043599	A1	11/2001	Redmond	
2001/0054031	A1	12/2001	Lee et al.	
2002/0016726	A1	2/2002	Ross	
2002/0032612	A1*	3/2002	Williams et al. ....	705/26
2002/0065815	A1	5/2002	Layden	
2002/0078024	A1	6/2002	Bellamy et al.	
2002/0124015	A1	9/2002	Cardno et al.	
2002/0153409	A1	10/2002	Yu	
2002/0174148	A1	11/2002	Seidman	
2002/0184497	A1	12/2002	Gage et al.	
2003/0009396	A1	1/2003	DeVries et al.	
2003/0014408	A1	1/2003	Robertson	
2003/0074213	A1	4/2003	Murakami et al.	
2003/0236688	A1	12/2003	Kadaba et al.	
2004/0083233	A1	4/2004	Willoughby	

2004/0177305	A1	9/2004	Payne et al.	
2004/0215588	A1*	10/2004	Cornelius .....	707/1
2004/0225543	A1	11/2004	Kapochunas et al.	
2005/0038758	A1	2/2005	Hilbush et al.	
2005/0246359	A1	11/2005	Robbins	
2006/0010110	A1	1/2006	Kim et al.	
2006/0212326	A1	9/2006	Miller et al.	

FOREIGN PATENT DOCUMENTS

WO	WO-96/34354	10/1996
WO	WO-01/06414	1/2001
WO	WO-2005/050481	2/2005
WO	WO-2006/083694	10/2006

OTHER PUBLICATIONS

PRC Notification of the Second Office Action for Chinese Application No. 200680006166.8 mailed Oct. 26, 2011.

Haderle, D.J., et al.; "IBM Database 2 Overview;" *IBM Systems Journal*, IBM Corporation; Armonk, New York; vol. 23, No. 2, (1984), pp. 112-125.

Pooch, U.W., et al.; "A Survey of Indexing Techniques for Sparse Matrices;" *Computing Surveys*; vol. 5, No. 2 (Jun. 1973); pp. 109-122.

Fernandez, et al. "Analysis Patterns for the Order and Shipment of Product;" Department of Computer Science and Engineering, Florida Atlantic University, 2000.

Hu, et al., "A Data Warehouse/Online Analytic Processing Framework for Web Usage Mining and Business Intelligence Reporting;" *International Journal of Intelligent Systems*, 2004, pp. 585-606, vol. 19.

Extended European Search Report for European Patent Application No. 06719627.9 mailed Jul. 27, 2009.

International Search Report and Written Opinion for International Application No. PCT/US06/02843 mailed Sep. 25, 2007.

Office Action dated Dec. 1, 2011, for Canadian Application No. 2,593,851.

\* cited by examiner

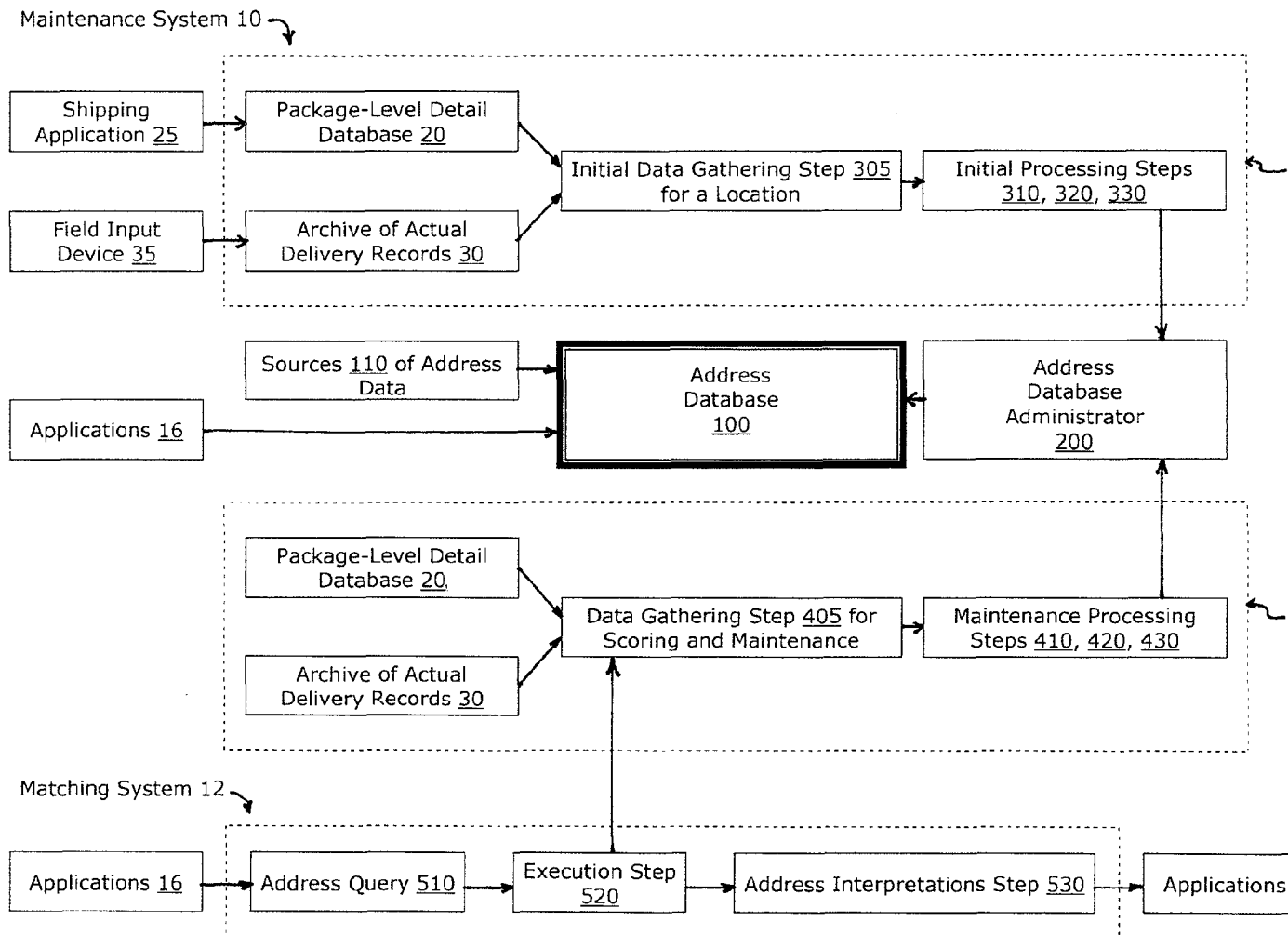


Fig. 1

**AMS Database Administration**

Customer Registration Information

Company Name:	Costco Connection	Match Date:		False Positive R
Receiving Location:	Brookstone Store 25	Projected:	16.51%	Projected:
Address:	3333 Bristol Street^South Coast Plaza Mall^Costa Mesa, CA 92626^	Current:	0.0%	Current:
Location Configuration:	Multi-Tenant Shopping/Strip Mall	Reg. Date:		Minimum Expected Match Rate
Comments:	This consignee also receive packages for Brookstone Store number 15	Mining Status:	4-Mining Complete	93
Deferral Reason:		Status:	Pending	

0 2 390 845 7 7

Grouping Cont: 0.3 Join Reason: Co-Delivered  
 Most common combination ^800^LAKE^DR^^ISSAQUAH^98027^US^ ,CHRISTENSEN, D, BURBANK (1%)  
 Most common recorded Delivery Address ^999^LAKE^DR^^ISSAQUAH^98027^US^(57%)

Join Reason: Most common combination  
 Most common recorded Delivery Address

Sub Group Action: [v] Grouping Confidence: [ ] Outcome: [ ]

+ V 1	COSTCO^SEAN MCCENERNEY^999 LAKE DR^^ISSAQUAH^WA^98027	A-Add
+ V 1	COSTCO^QUALITY ASSURANCE DEPARTMENT/SHER^900 LAKE DRIVE^^ISSAQUAH^WA^98027	A-Add
+ V 1	COSTCO^BECKY S^1045 LAKE DRIVE^^ISSAQUAH^WA^98027	A-Add
+ V 1	COSTCO^ATTN ALLEN WEBSTER^1045 LAKE DR^^ISSAQUAH^WA^98027	A-Add
+ V 2	COSTCO^BECKY SCHMIDT^1045 LAKE DR^^ISSAQUAH^WA^98027	A-Add
+ V 1	COSTCO^CORPORATE OFFICE^^999 LAKE DRIVE^^ISSAQUAH^WA^98027	
+ V 1	COSTCO^CORPORATE OFFICE^^COSTCO CORPORATE OFFICE^999 LAKE DR^^ISSAQUAH^WA^98027	
+ V 1	COSTCO^WHOLE^^999 LAKE DR^^ISSAQUAH^WA^98027	
+ V 1	COSTCOWHOLE^^ATTN:MICHELLE HUSHBY^SMALL ELECTRICS^999 LAKE DRIVE^^ISSAQUAH^WA^98027	

View Registration Information Accept Delete Reject Registration Skip

Unit of Work loading complete

FIG. 2

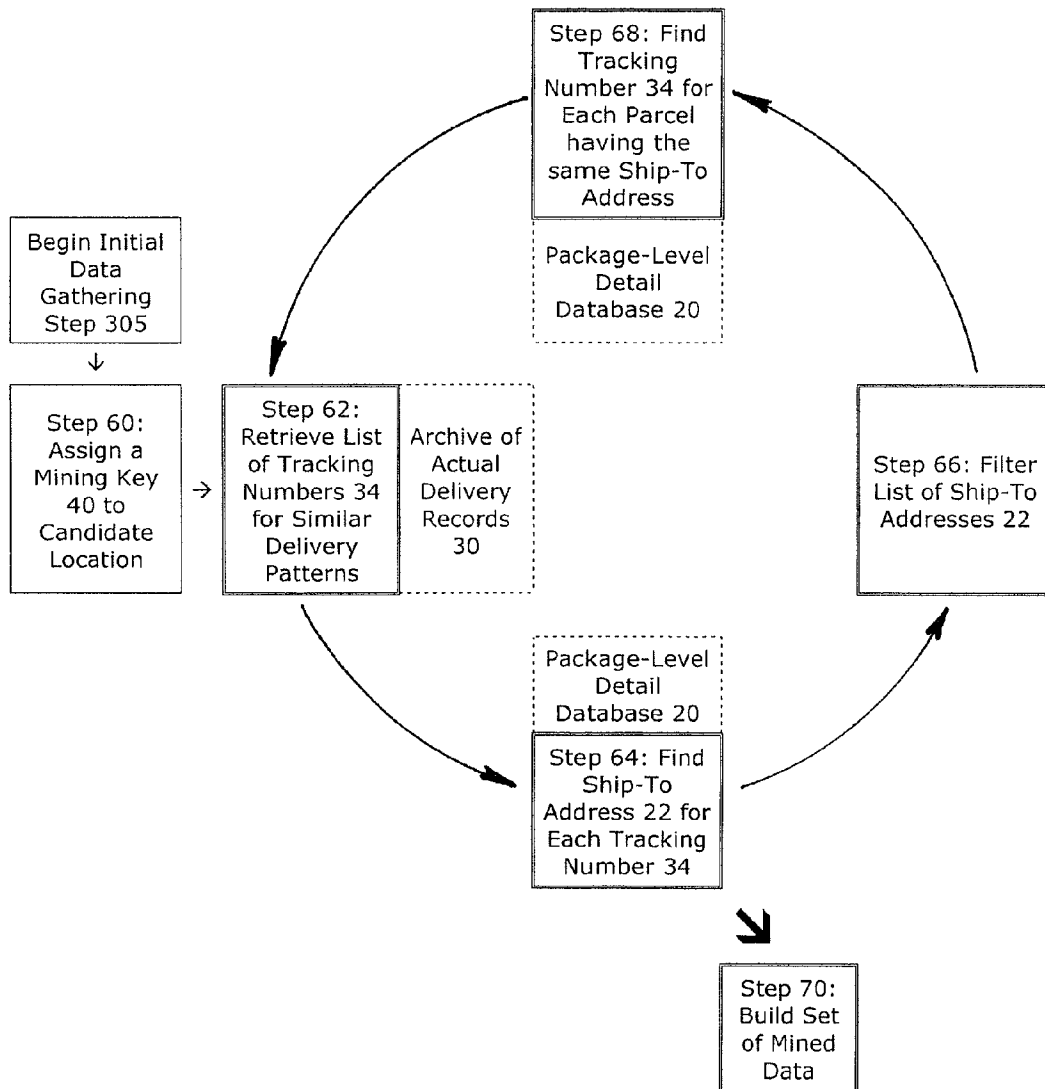


Fig. 3

# Explore Litigation Insights

Docket Alarm provides insights to develop a more informed litigation strategy and the peace of mind of knowing you're on top of things.

## Real-Time Litigation Alerts



Keep your litigation team up-to-date with **real-time alerts** and advanced team management tools built for the enterprise, all while greatly reducing PACER spend.

Our comprehensive service means we can handle Federal, State, and Administrative courts across the country.

## Advanced Docket Research



With over 230 million records, Docket Alarm's cloud-native docket research platform finds what other services can't. Coverage includes Federal, State, plus PTAB, TTAB, ITC and NLRB decisions, all in one place.

Identify arguments that have been successful in the past with full text, pinpoint searching. Link to case law cited within any court document via Fastcase.

## Analytics At Your Fingertips



Learn what happened the last time a particular judge, opposing counsel or company faced cases similar to yours.

Advanced out-of-the-box PTAB and TTAB analytics are always at your fingertips.

## API

Docket Alarm offers a powerful API (application programming interface) to developers that want to integrate case filings into their apps.

## LAW FIRMS

Build custom dashboards for your attorneys and clients with live data direct from the court.

Automate many repetitive legal tasks like conflict checks, document management, and marketing.

## FINANCIAL INSTITUTIONS

Litigation and bankruptcy checks for companies and debtors.

## E-DISCOVERY AND LEGAL VENDORS

Sync your system to PACER to automate legal marketing.