

UNITED STATES PATENT AND TRADEMARK OFFICE

BEFORE THE PATENT TRIAL AND APPEAL BOARD

WANGS ALLIANCE CORPORATION d/b/a WAC LIGHTING CO.,
Petitioner,

v.

KONINKLIJKE PHILIPS N.V.,
Patent Owner.

Case IPR2015-01287
Patent 6,013,988

Before, GLENN J. PERRY, TREVOR M. JEFFERSON, and
MIRIAM L. QUINN, *Administrative Patent Judges*.

QUINN, *Administrative Patent Judge*.

FINAL WRITTEN DECISION
35 U.S.C. § 318(a) and 37 C.F.R. § 42.73

Wangs Alliance Corporation (“Petitioner”) filed a Petition to institute *inter partes* review of claims 1 and 2 of U.S. Patent No. 6,013,988 (“the ’988 patent”) pursuant to 35 U.S.C. § 311–319. Paper 2 (“Pet.”). Koninklijke Philips N.V. (“Patent Owner”) timely filed a Preliminary Response. Paper 6 (“Prelim. Resp.”). Upon consideration of the Petition and the Preliminary Response, we instituted trial as to claims 1 and 2. Paper 8 (“Dec.”).

Subsequent to institution, Patent Owner filed a Patent Owner Response (Paper 22, “PO Resp.”); and Petitioner filed a Reply (Paper 35, “Reply”). Patent Owner also filed Motions for Observations on Cross Examination of Petitioner’s Reply Witness Mr. Tingler. Paper 51 (“Mot. for Obs.”). Petitioner responded to Patent Owner’s Motion for Observations. Paper 55 (“Resp. Obs.”). Petitioner also filed a Motion to Exclude (Paper 45, “Mot. to Exclude”), which Patent Owner opposes (Paper 50, “Opp. Mot. to Exclude”).¹

An oral hearing was held on August 23, 2016.²

We have jurisdiction under 35 U.S.C. § 6(c). This Final Written Decision is issued pursuant to 35 U.S.C. § 318(a). For the reasons discussed herein, and in view of the record in this trial, we determine that Petitioner has shown by a preponderance of the evidence that claims 1 and 2 of the ’988 patent are unpatentable.

¹ Petitioner also filed a Reply in support of its Motion to Exclude. Paper 54 (“Reply Mot. to Exclude”).

² A transcript of the oral hearing is entered in the record as Paper 58 (“Tr.”).

I. BACKGROUND

A. RELATED MATTERS

Petitioner states that the patent-at-issue is the subject matter of a district court case filed in the U.S. District Court for the District of Massachusetts (Case No. 14-cv-12298-DJC). Pet. 1.

B. INSTITUTED GROUNDS OF UNPATENTABILITY

We instituted trial based on the following grounds (Dec. 21–22):

Reference[s]	Basis	Claims
Hochstein ³ and Hildebrand ⁴	§ 103	1 and 2
Perry ⁵	§ 102	1

C. THE '988 PATENT (EX. 1001)

The '988 patent is directed to a circuit arrangement for operating a semiconductor light source, or light emitting diode (“LED”) lights. Ex. 1001, 1:11–18. The '988 patent describes that control units in existing signaling systems often conduct “leakage current” when the control unit is in a non-conducting, or off, state. *Id.* at 1:36–38.

Figure 1 of the '988 patent, reproduced below, illustrates the control unit VB and semiconductor light source LB, or LED light.

³ U.S. Patent No. 5,661,645 (Exhibit 1003) (“Hochstein”).

⁴ U.S. Patent No. 5,075,601 (Exhibit 1005) (“Hildebrand”).

⁵ U.S. Patent No. 6,150,771 (Exhibit 1004) (“Perry”).

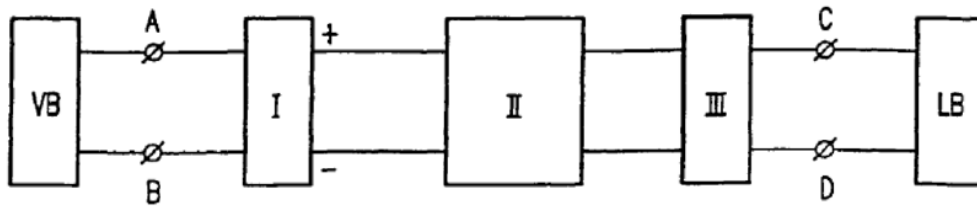


FIG. 1

Figure 1 depicts connection terminals A and B, input filter means I, self-regulating current-conducting network II, converter III, and output terminals C and D. *Id.* at 2:55–62. Figure 2, reproduced below, shows an embodiment of the self-regulating current-conducting network II. *Id.* at 2:63–3:13.

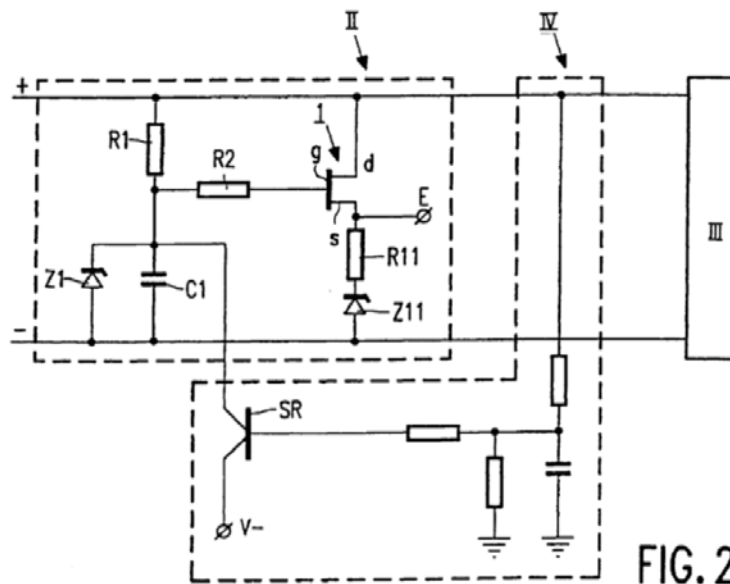


FIG. 2

According to the embodiment depicted in Figure 2 above, when the control unit is switched on, the voltage at the positive pole + will rise, and switch SR becomes conducting, cutting off MOSFET 1, resulting in self-regulating, current-conducting network II being deactivated. *Id.* at 3: 21–25.

D. CLAIMS-AT-ISSUE

The challenged claims are reproduced below.

1. A circuit arrangement for operating a semiconductor light source, said circuit arrangement comprising:

connection terminals for connecting the circuit arrangement to outputs from a control unit for controlling the semiconductor light source;

input filter means coupled to the connection terminals;

a converter comprising a control circuit, said converter being coupled to output means of the input filter means; and

output terminals for coupled to output means of said converter for connecting said circuit arrangement to the semiconductor light source,

characterized in that said converter comprises a switched-mode power supply for providing power to said semiconductor light source, said switched-mode power supply having a switching element which is cyclically switched on and off by said control circuit, and the circuit arrangement further comprises a self-regulating current-conducting network coupled between said filter means and said converter, said self-regulating current-conducting network draining off a leakage current in the control unit when said control unit is in a non-conducting state.

2. The circuit arrangement as claimed in claim 1, characterized in that the circuit arrangement comprises means [f]or deactivating the self-regulating current-conducting network [w]hen the converter is switched on.

Explore Litigation Insights

Docket Alarm provides insights to develop a more informed litigation strategy and the peace of mind of knowing you're on top of things.

Real-Time Litigation Alerts



Keep your litigation team up-to-date with **real-time alerts** and advanced team management tools built for the enterprise, all while greatly reducing PACER spend.

Our comprehensive service means we can handle Federal, State, and Administrative courts across the country.

Advanced Docket Research



With over 230 million records, Docket Alarm's cloud-native docket research platform finds what other services can't. Coverage includes Federal, State, plus PTAB, TTAB, ITC and NLRB decisions, all in one place.

Identify arguments that have been successful in the past with full text, pinpoint searching. Link to case law cited within any court document via Fastcase.

Analytics At Your Fingertips



Learn what happened the last time a particular judge, opposing counsel or company faced cases similar to yours.

Advanced out-of-the-box PTAB and TTAB analytics are always at your fingertips.

API

Docket Alarm offers a powerful API (application programming interface) to developers that want to integrate case filings into their apps.

LAW FIRMS

Build custom dashboards for your attorneys and clients with live data direct from the court.

Automate many repetitive legal tasks like conflict checks, document management, and marketing.

FINANCIAL INSTITUTIONS

Litigation and bankruptcy checks for companies and debtors.

E-DISCOVERY AND LEGAL VENDORS

Sync your system to PACER to automate legal marketing.