



Dedicated to Publishing Excellence

Sponsoring Editor: Nancy Megley
 Assistant Director, Manuscript Services: Frances M. Perveiler
 Production Project Coordinator: Karen E. Halm

Copyright © 1987, 1991 Mayo Foundation

Mosby-Year Book, Inc.
 11830 Westline Industrial Drive
 St. Louis, MO 63146

All rights reserved. No part of this publication may be reproduced, stored in a retrieval system, or transmitted, in any form or by any means, electronic, mechanical, photocopying, recording, or otherwise, without prior written permission from the Mayo Foundation.
 Printed in the United States of America.

Permission to photocopy or reproduce solely for internal or personal use is permitted for libraries or other users registered with the Copyright Clearance Center, provided that the base fee of \$4.00 per chapter plus \$.10 per page is paid directly to the Copyright Clearance Center, 21 Congress Street, Salem, MA 01970. This consent does not extend to other kinds of copying, such as copying for general distribution, for advertising or promotional purposes, for creating new collected works, or for resale.

1 2 3 4 5 6 7 8 9 0 CL SL MY 95 94 93 92 91

Library of Congress Cataloging-in-Publication Data

Cardiology: fundamentals and practice.—2nd ed./Emilio R. Giuliani . . . [et al.]
 p. cm.
 Includes bibliographical references.
 Includes index.
 ISBN 0-8016-2006-6
 1. Heart—Diseases. 2. Cardiology. I. Giuliani, Emilio R. (Emilio Romolo), 1927—
 [DNLM: 1. Heart Diseases. WG 200 C2656]
 RC681.C1791991
 616.1'2—dc20
 DNLM/DLC 91-13681
 for Library of Congress CIP

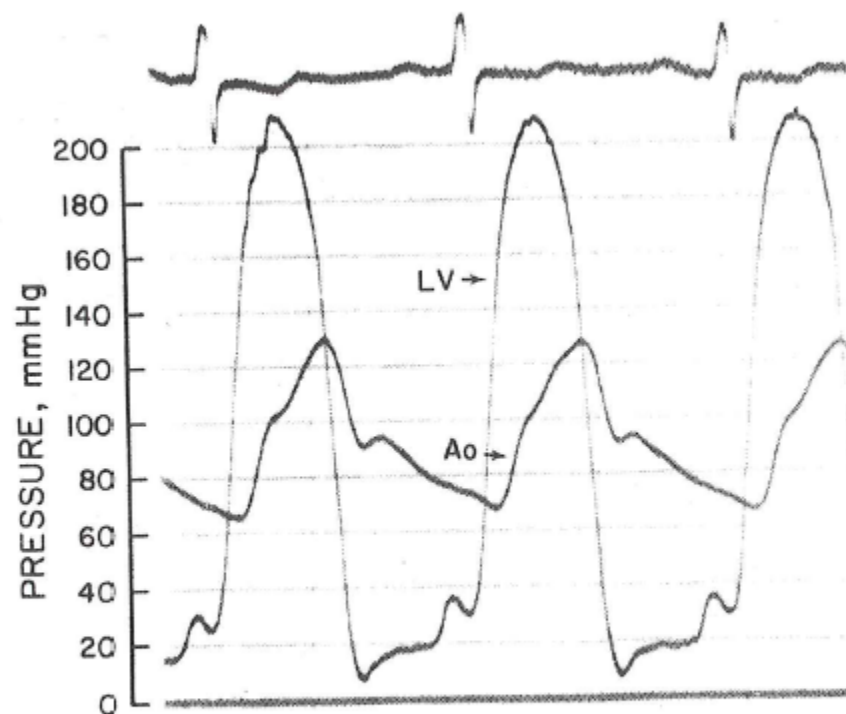


Fig 38A-11.—Left ventricular (LV) and aortic (Ao) pressure tracings in an elderly man with severe calcific aortic stenosis. The large “a” wave in the LV tracing is consistent with decreased compliance of the massively hypertrophied ventricle. The LV pressure was measured with a micromanometer catheter; aortic pressure was measured with a fluid-filled catheter system attached via tubing to a P23Db transducer. This accounts in part for the delay in onset of Ao upstroke relative to LV pressure rise. (From Grossman W: Profiles in valvular heart disease. In *Cardiac Catheterization and Angiography*. Edited by W Grossman. Philadelphia, Lea & Febiger, 1986, pp 359–381. By permission.)

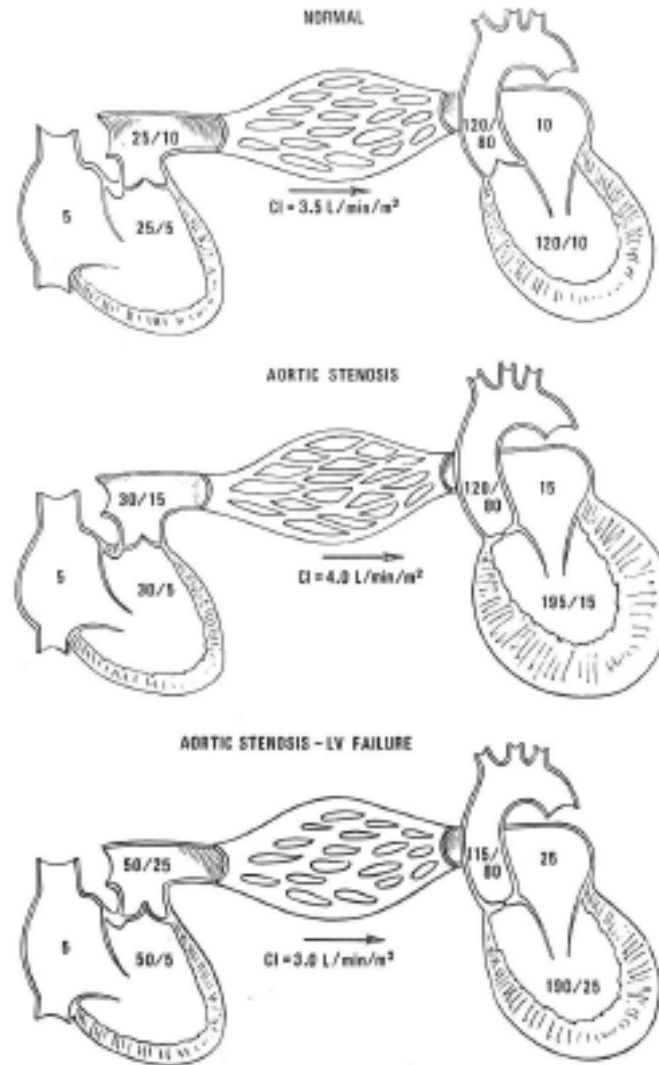


Fig 38A-13.—Hemodynamic consequences, at rest, of isolated aortic stenosis (middle) compared with normal (top) and with aortic stenosis associated with left ventricular failure (bottom).