



US007818741B1

(12) **United States Patent**
Bourdev

(10) **Patent No.:** **US 7,818,741 B1**
(45) **Date of Patent:** **Oct. 19, 2010**

(54) **METHOD AND SYSTEM TO MONITOR
INSTALLATION OF A SOFTWARE
PROGRAM**

(75) Inventor: **Lubomir D. Bourdev**, San Jose, CA
(US)

(73) Assignee: **Adobe Systems Incorporated**, San Jose,
CA (US)

(*) Notice: Subject to any disclaimer, the term of this
patent is extended or adjusted under 35
U.S.C. 154(b) by 1555 days.

(21) Appl. No.: **11/131,166**

(22) Filed: **May 17, 2005**

(51) **Int. Cl.**
G06F 9/45 (2006.01)

(52) **U.S. Cl.** **717/174**

(58) **Field of Classification Search** **717/174,**
717/149

See application file for complete search history.

(56) **References Cited**

U.S. PATENT DOCUMENTS

5,509,070	A *	4/1996	Schull	705/54
5,815,484	A *	9/1998	Smith et al.	369/275.1
5,953,532	A *	9/1999	Lochbaum	717/176
6,009,401	A *	12/1999	Horstmann	705/1
6,009,525	A *	12/1999	Horstmann	726/22
6,027,622	A *	2/2000	Graser et al.	204/426
6,243,468	B1 *	6/2001	Pearce et al.	380/255

6,243,692	B1 *	6/2001	Floyd et al.	705/59
6,334,214	B1 *	12/2001	Horstmann	717/170
6,854,061	B2 *	2/2005	Cooper et al.	713/190
2002/0083318	A1 *	6/2002	Larose	713/164
2002/0197528	A1 *	12/2002	Zunke	429/144
2003/0088515	A1 *	5/2003	Cooper et al.	705/50
2004/0025033	A1 *	2/2004	Todd	713/189
2005/0038752	A1 *	2/2005	Gaetano et al.	705/59
2006/0106728	A1 *	5/2006	Yellai et al.	705/59

* cited by examiner

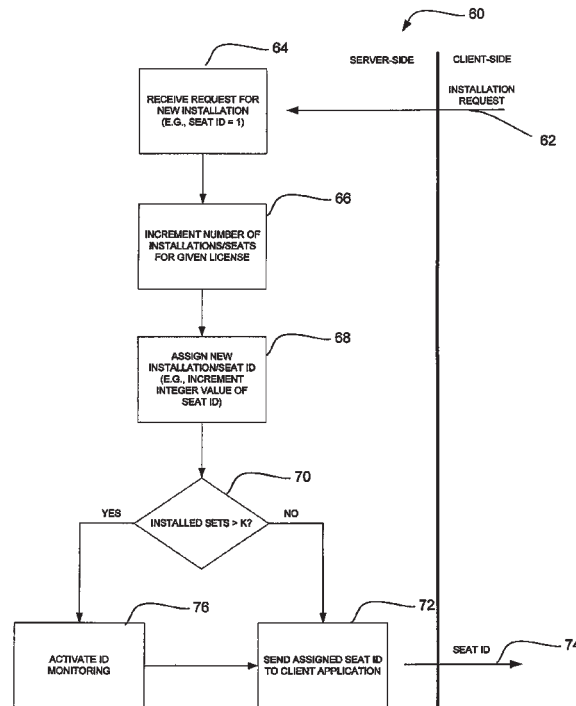
Primary Examiner—John Chavis

(74) *Attorney, Agent, or Firm*—Schwegman Lundberg &
Woessner, P.A.

(57) **ABSTRACT**

A method and a system is provided of monitoring installation of a software program on at least one user computer. The software program may be subject to a license agreement that specifies a number of permitted installations of the software program. The method may comprising receiving an installation identifier identifying a useable installation of the software program on the at least one user computer and determining if the installation identifier is one of a set of installation identifiers. The set of installation identifiers may comprise at least one monitored installation identifier and the set may be created or generated when a number of user installations exceeds a limit of installations (e.g., a number of permitted useable installations). When the received installation identifier is one of the set, the method may comprise modifying the set so that the received installation identifier is no longer a monitored installation identifier.

21 Claims, 12 Drawing Sheets



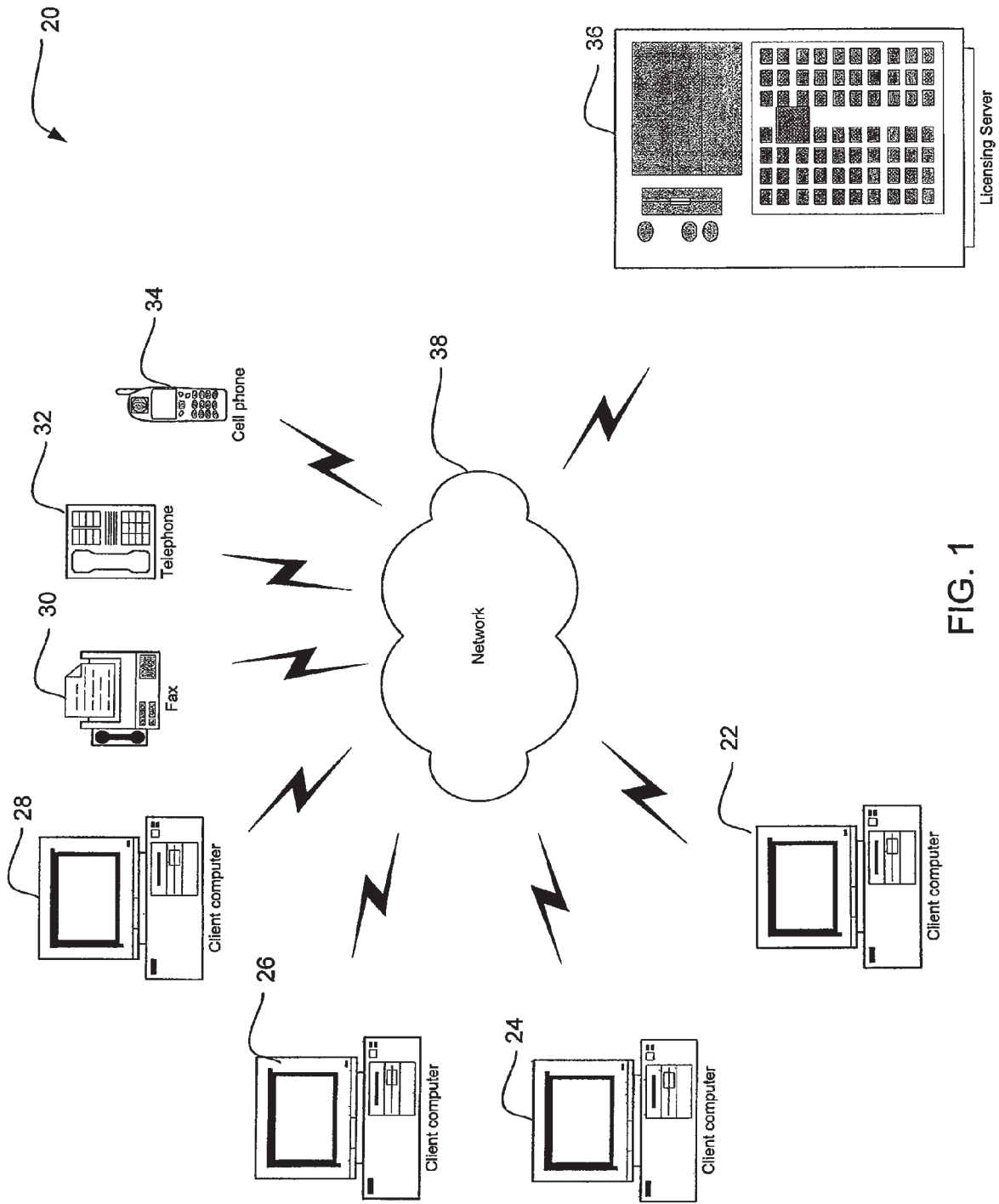


FIG. 1

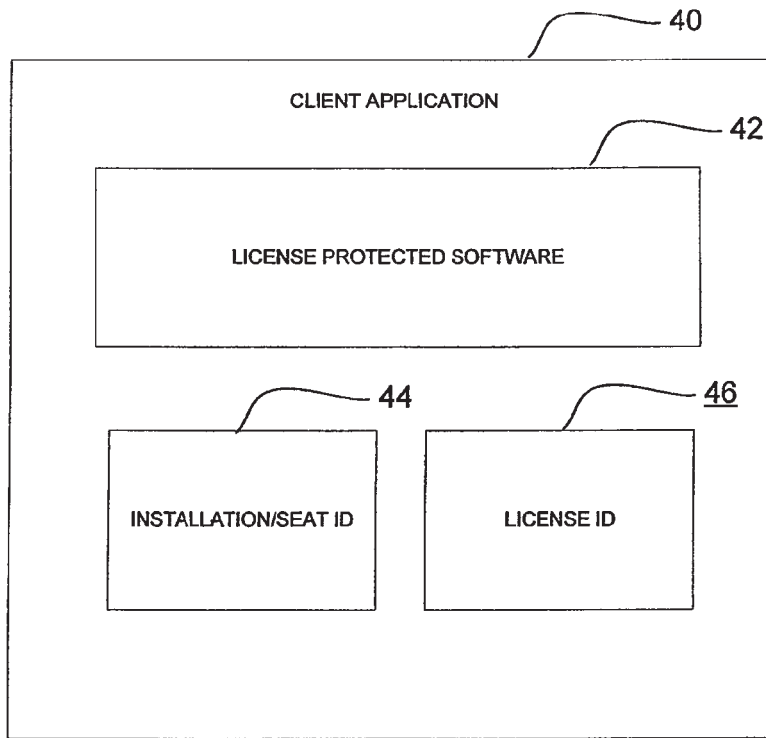


FIG. 2

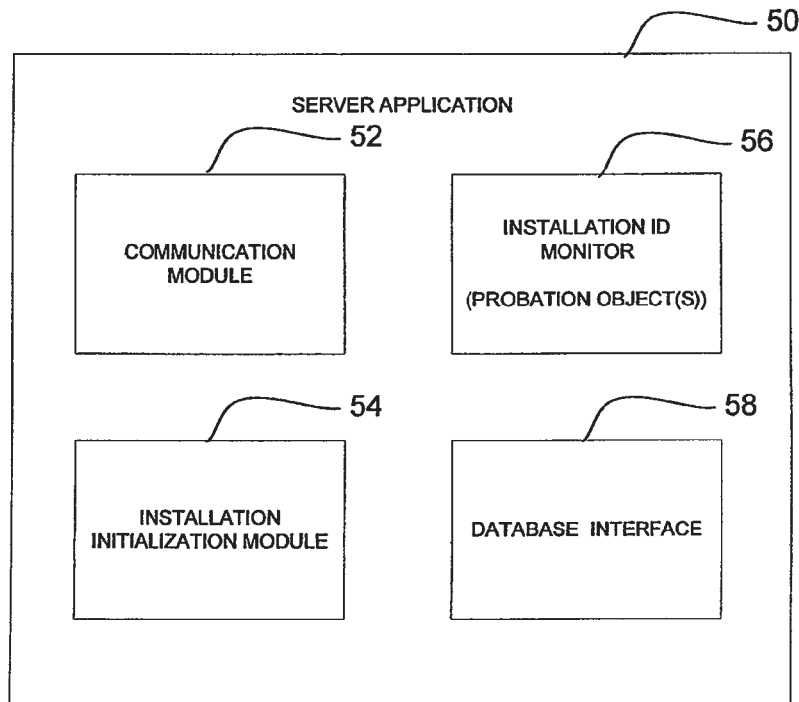


FIG. 3

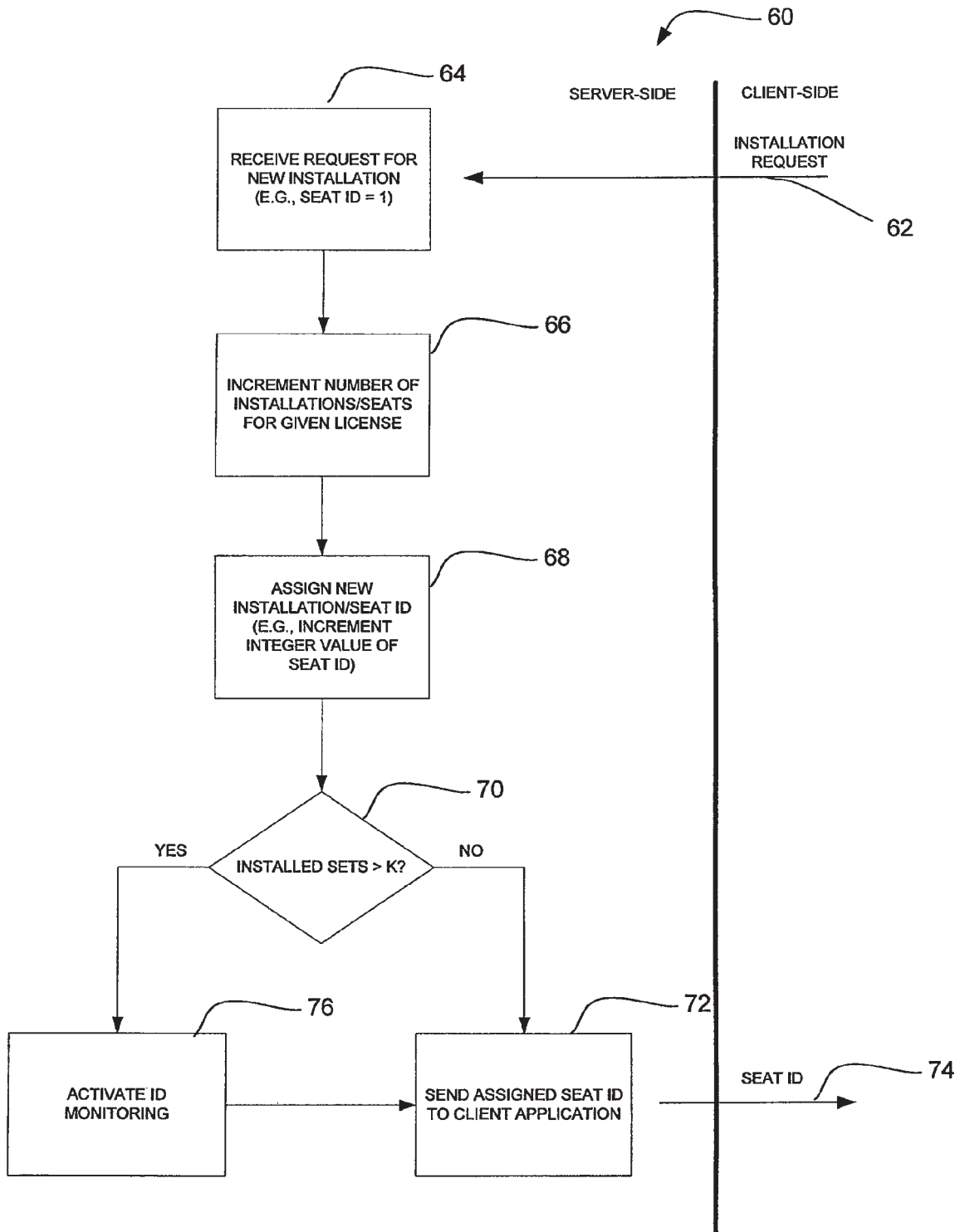


FIG. 4

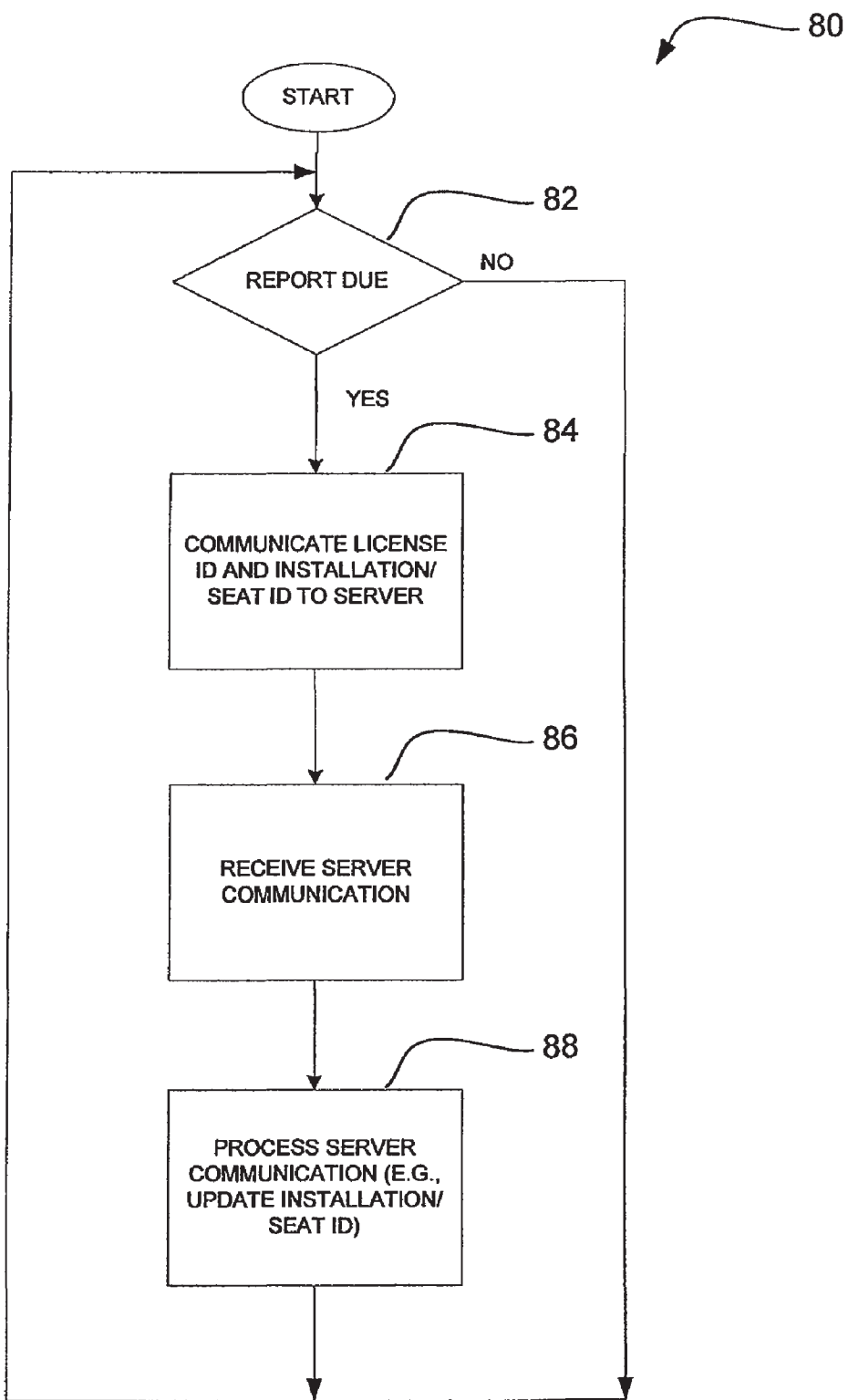


FIG. 5

Explore Litigation Insights

Docket Alarm provides insights to develop a more informed litigation strategy and the peace of mind of knowing you're on top of things.

Real-Time Litigation Alerts



Keep your litigation team up-to-date with **real-time alerts** and advanced team management tools built for the enterprise, all while greatly reducing PACER spend.

Our comprehensive service means we can handle Federal, State, and Administrative courts across the country.

Advanced Docket Research



With over 230 million records, Docket Alarm's cloud-native docket research platform finds what other services can't. Coverage includes Federal, State, plus PTAB, TTAB, ITC and NLRB decisions, all in one place.

Identify arguments that have been successful in the past with full text, pinpoint searching. Link to case law cited within any court document via Fastcase.

Analytics At Your Fingertips



Learn what happened the last time a particular judge, opposing counsel or company faced cases similar to yours.

Advanced out-of-the-box PTAB and TTAB analytics are always at your fingertips.

API

Docket Alarm offers a powerful API (application programming interface) to developers that want to integrate case filings into their apps.

LAW FIRMS

Build custom dashboards for your attorneys and clients with live data direct from the court.

Automate many repetitive legal tasks like conflict checks, document management, and marketing.

FINANCIAL INSTITUTIONS

Litigation and bankruptcy checks for companies and debtors.

E-DISCOVERY AND LEGAL VENDORS

Sync your system to PACER to automate legal marketing.