

[54] MICROFILM READER/PRINTER  
[75] Inventor: Izumi Watanabe, Kanagawa, Japan  
[73] Assignee: Fuji Photo Film Co., Ltd., Kanagawa, Japan  
[21] Appl. No.: 599,940  
[22] Filed: Oct. 19, 1990  
[30] Foreign Application Priority Data

Oct. 20, 1989 [JP] Japan ..... 1-272973  
Oct. 20, 1989 [JP] Japan ..... 1-272974  
[51] Int. Cl.<sup>5</sup> ..... G03B 13/28  
[52] U.S. Cl. .... 355/45; 355/64;  
355/44; 355/60  
[58] Field of Search ..... 355/44, 45, 64, 23,  
355/24, 25, 60, 63

[56] References Cited  
U.S. PATENT DOCUMENTS  
3,649,119 3/1972 Rempala et al. .... 355/45  
4,737,825 4/1988 Davis ..... 355/74  
4,857,966 8/1989 Ishii et al. .... 355/45

Primary Examiner—Monroe H. Hayes  
Attorney, Agent, or Firm—Sughrue, Mion, Zinn,  
Macpeak & Seas

[57] ABSTRACT  
A microfilm reader/printer for selecting a desired image from images recorded on a microfilm roll to print the desired image, the images being recorded by the duo photographing system in two channels so that the images recorded in one channel are in the normal orientation while the images recorded in the other channel are in the inverted orientation. Desired images are printed by the microfilm reader/printer always in the normal orientation irrespective of the orientation thereof recorded in either one of the two channels on the duo mode microfilm automatically without the need of manual operation. Channel exchanging means and image rotating means are combined so that orientation of images is inverted every time the channel being retrieved is exchanged so as to display or print desired images in the same orientation. The channel exchanging means may be mechanical or optical means, and the image rotating means may be optical or electronic image processing means. The same object is achieved by the combination of channel exchange position detecting means and an image processor associated with an image sensor.

7 Claims, 5 Drawing Sheets

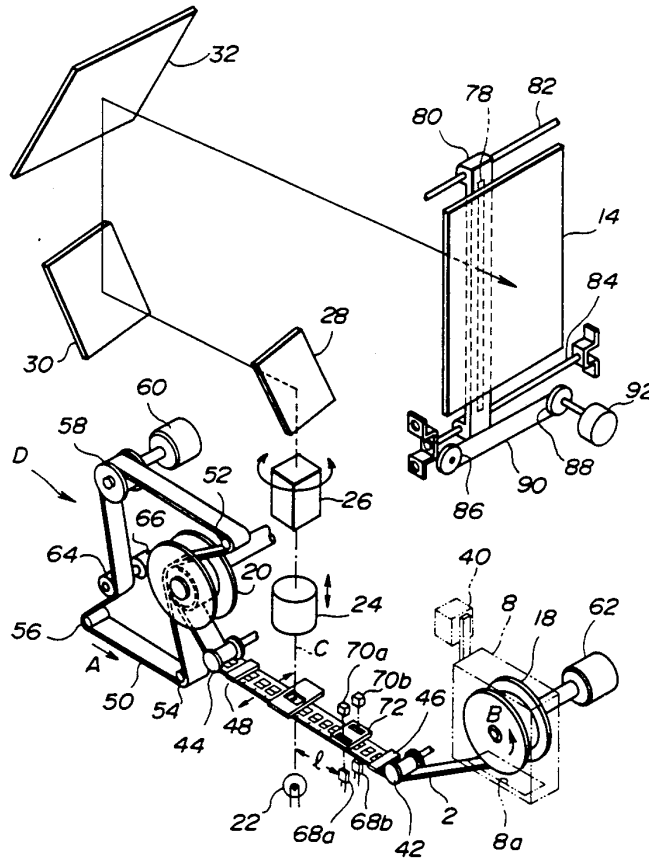


FIG. 1

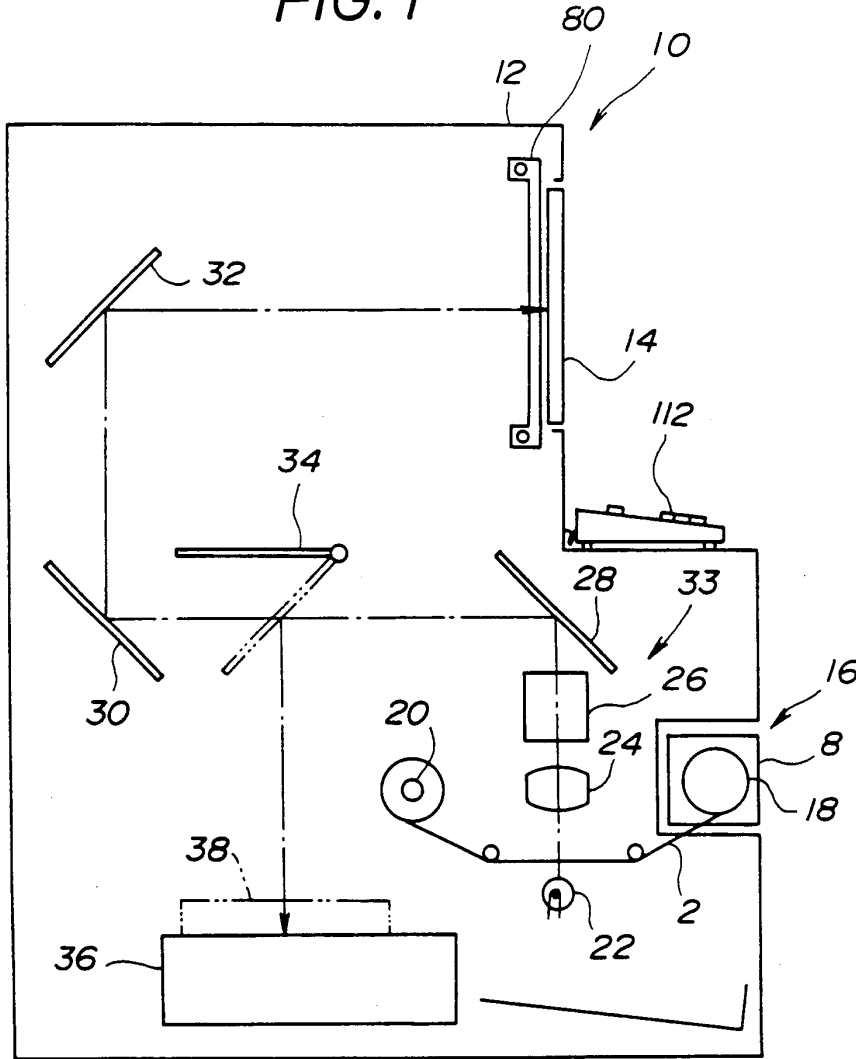
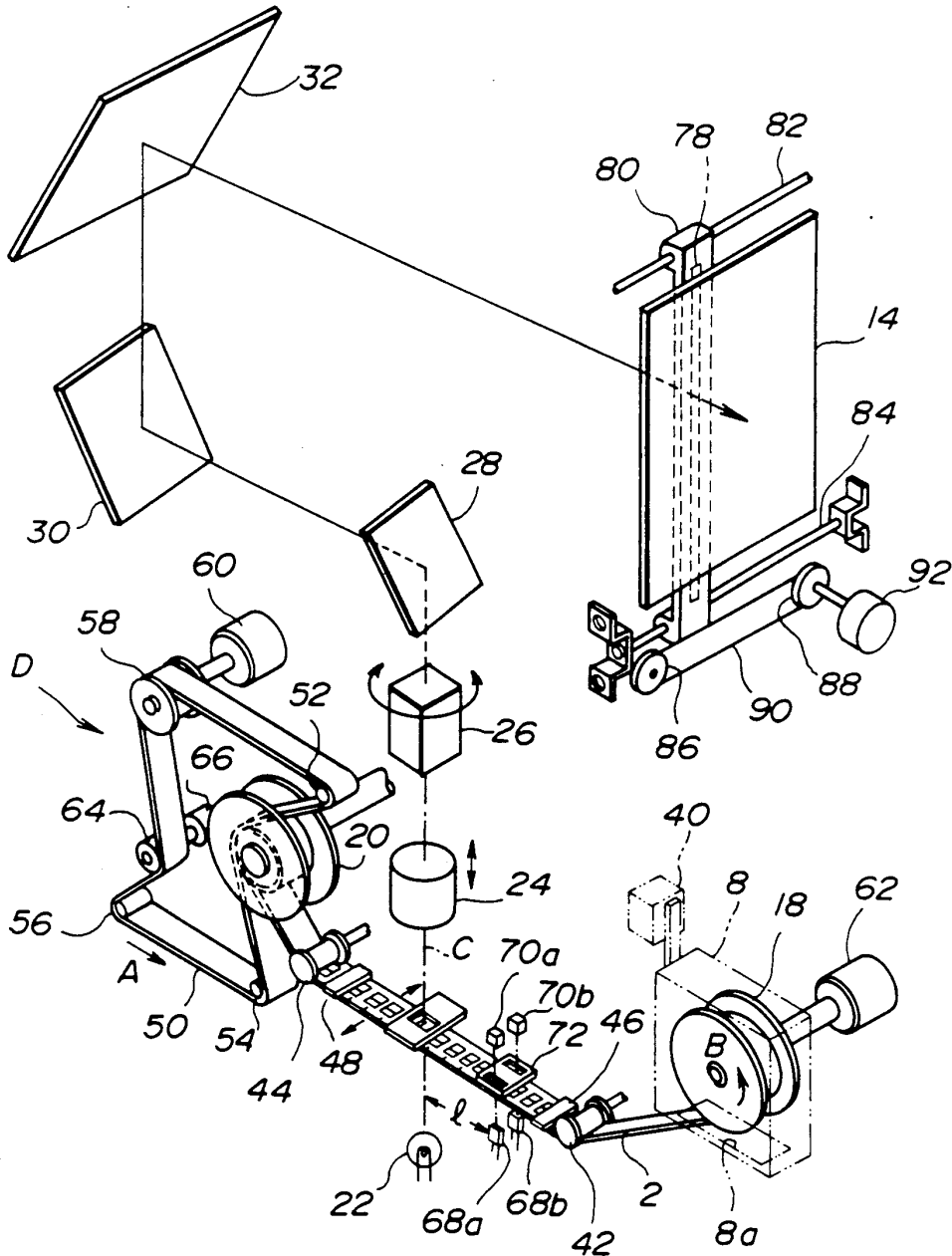


FIG. 2



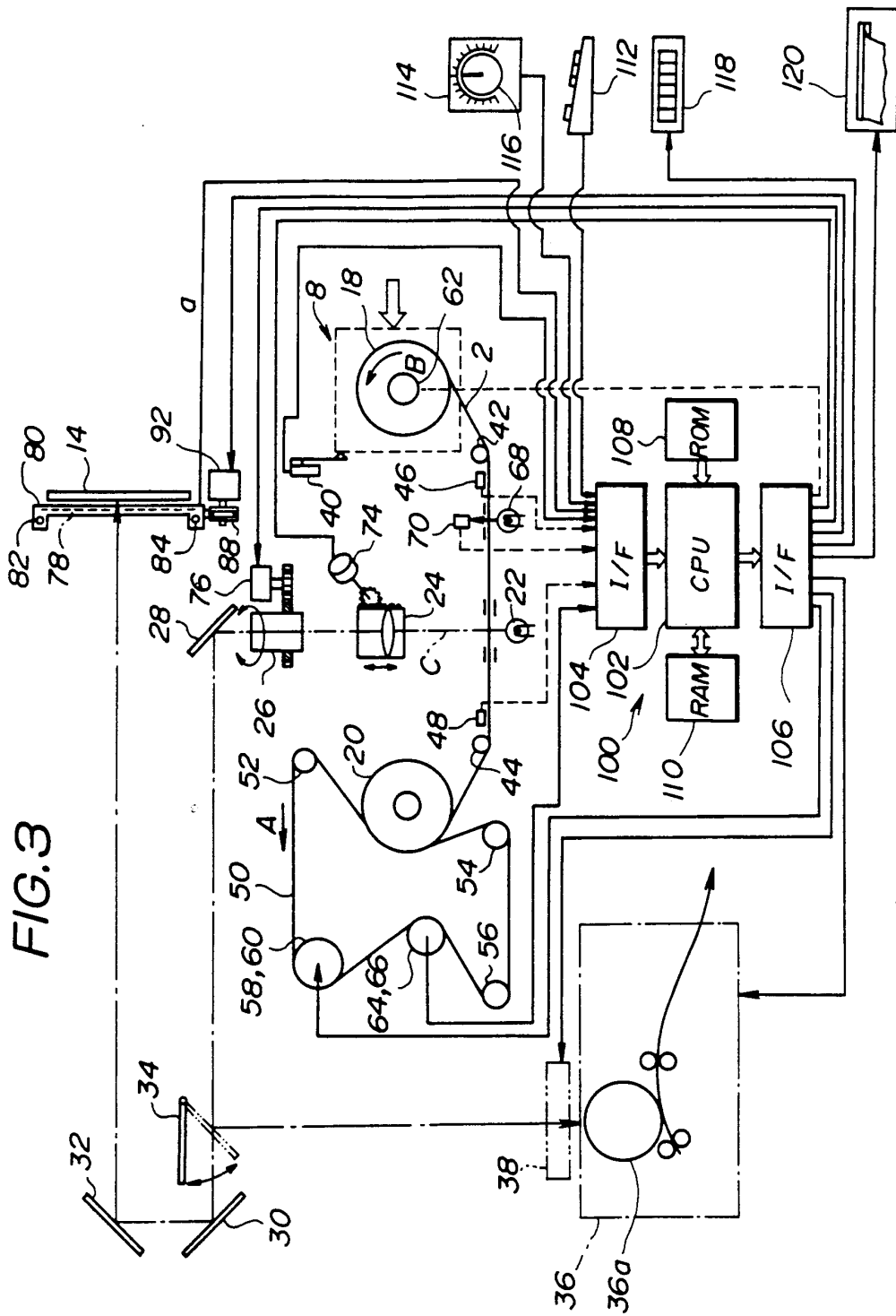


FIG. 3

FIG. 4

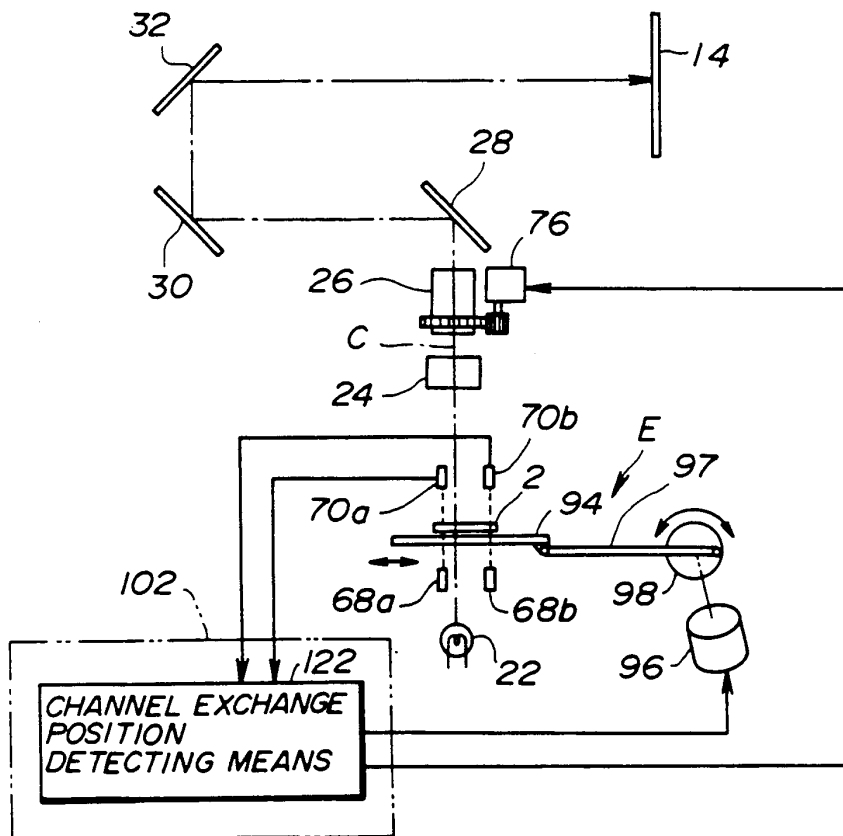
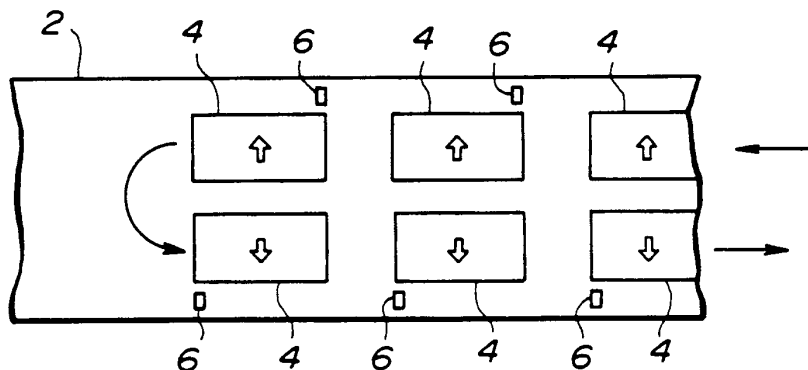


FIG. 5



# Explore Litigation Insights

Docket Alarm provides insights to develop a more informed litigation strategy and the peace of mind of knowing you're on top of things.

## Real-Time Litigation Alerts



Keep your litigation team up-to-date with **real-time alerts** and advanced team management tools built for the enterprise, all while greatly reducing PACER spend.

Our comprehensive service means we can handle Federal, State, and Administrative courts across the country.

## Advanced Docket Research



With over 230 million records, Docket Alarm's cloud-native docket research platform finds what other services can't. Coverage includes Federal, State, plus PTAB, TTAB, ITC and NLRB decisions, all in one place.

Identify arguments that have been successful in the past with full text, pinpoint searching. Link to case law cited within any court document via Fastcase.

## Analytics At Your Fingertips



Learn what happened the last time a particular judge, opposing counsel or company faced cases similar to yours.

Advanced out-of-the-box PTAB and TTAB analytics are always at your fingertips.

## API

Docket Alarm offers a powerful API (application programming interface) to developers that want to integrate case filings into their apps.

## LAW FIRMS

Build custom dashboards for your attorneys and clients with live data direct from the court.

Automate many repetitive legal tasks like conflict checks, document management, and marketing.

## FINANCIAL INSTITUTIONS

Litigation and bankruptcy checks for companies and debtors.

## E-DISCOVERY AND LEGAL VENDORS

Sync your system to PACER to automate legal marketing.