

[54] NASO-ENTERAL TUBE HARNESS APPARATUS AND METHOD

4,133,315 1/1979 Berman et al. 604/96
4,634,425 1/1987 Meer 604/54

[76] Inventor: Jeffrey A. Meer, 7380 St. Auburn, Birmingham, Mich. 48010

OTHER PUBLICATIONS

[*] Notice: The portion of the term of this patent subsequent to Jan. 6, 2004 has been disclaimed.

Barrocas et al., "The Bridle: Increasing the Use of Nasoenteric Feedings", *Nutritional Support Services* vol. 2, No. 8, Aug. 1982.

McGuirt, Strout, "Securing of Intermediate Duration Feeding Tubes," *The Laryngoscope*, vol. 90, pp. 2046-2048 (1980).

[21] Appl. No.: 884,081

Primary Examiner—Stephen C. Pellegrino
Assistant Examiner—Ralph Lewis
Attorney, Agent, or Firm—Robert M. Isackson

[22] Filed: Jul. 10, 1986

Related U.S. Application Data

[63] Continuation-in-part of Ser. No. 774,485, Sep. 10, 1985, Pat. No. 4,634,425.

[57] ABSTRACT

[51] Int. Cl.⁴ A61M 25/00

A harness for a tube for use in patient health care, particularly for naso-enteral feeding. The harness is a thin elongated length of material, preferably cylindrical or tubular, secured to a nasal tube for a distance along the length of the tube and inserted into the patient with the tube. The harness then may be secured about the patient's nasal septum so that the connection between the harness and the tube along the distance is within the patient's nostril.

[52] U.S. Cl. 604/54; 604/174; 604/280; 128/207.18; 128/DIG. 26

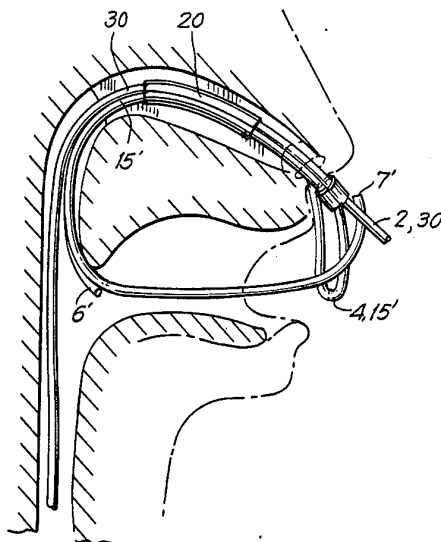
[58] Field of Search 604/54, 77, 94, 174, 604/270, 271, 280; 128/207.18, DIG. 26

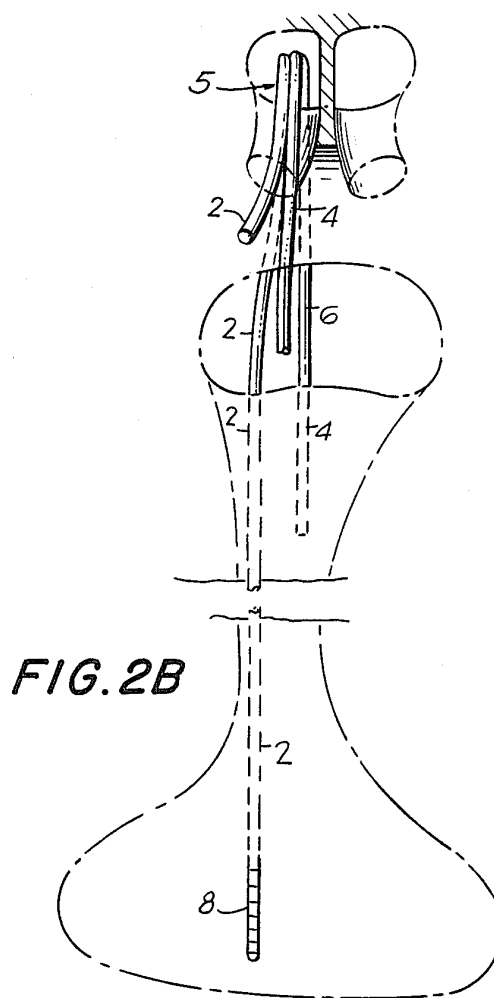
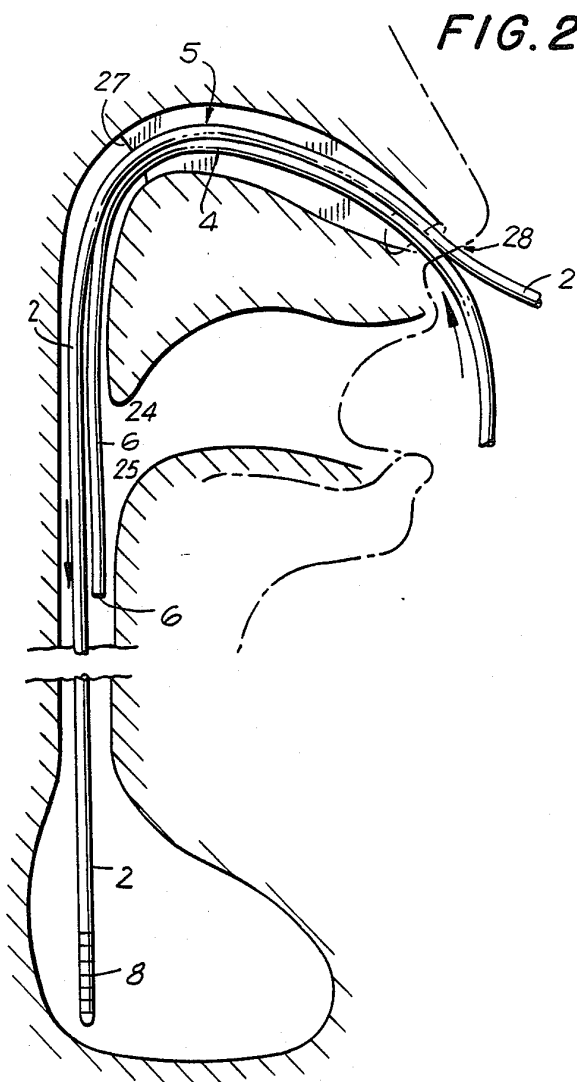
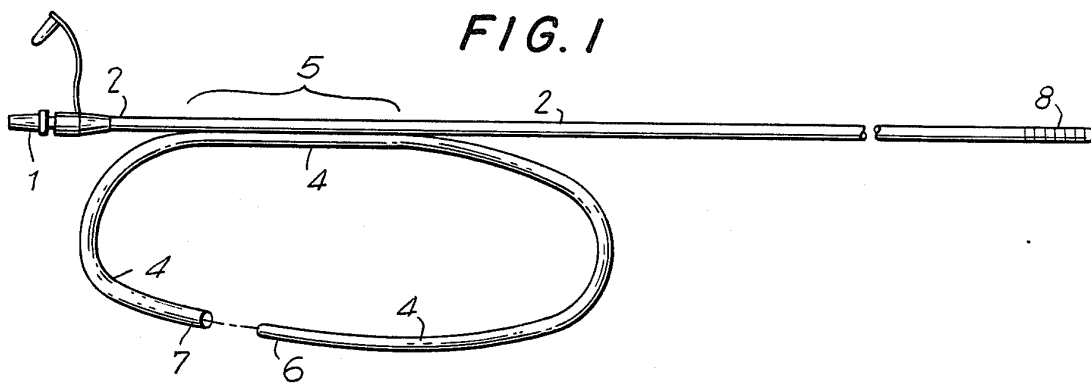
[56] References Cited

U.S. PATENT DOCUMENTS

3,161,199 12/1964 Sands 128/D26
4,050,667 9/1977 Kossett 604/281

13 Claims, 4 Drawing Sheets





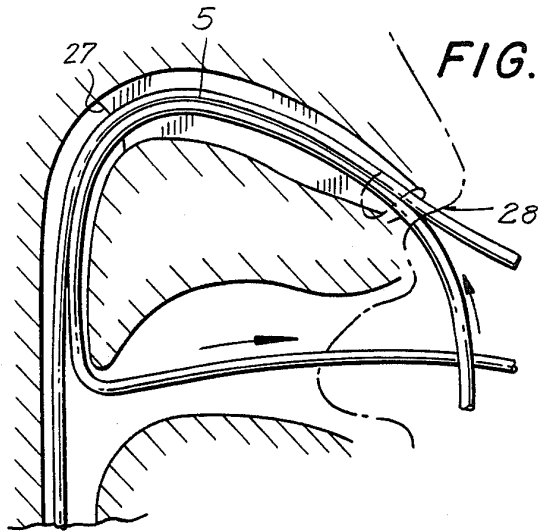


FIG. 2C

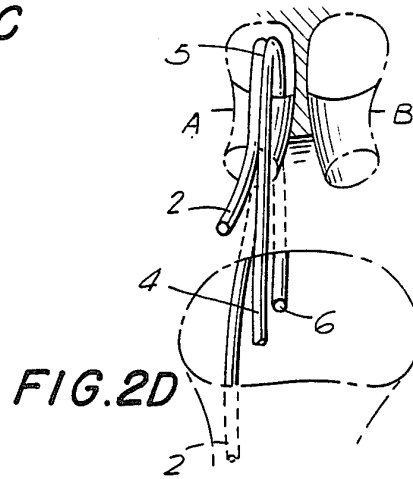


FIG. 2D

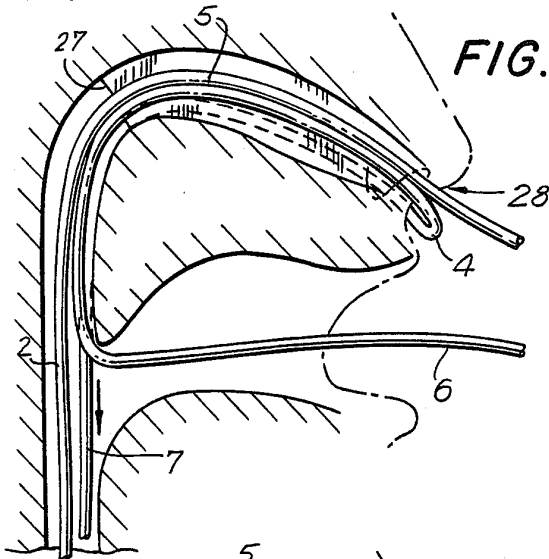


FIG. 2E

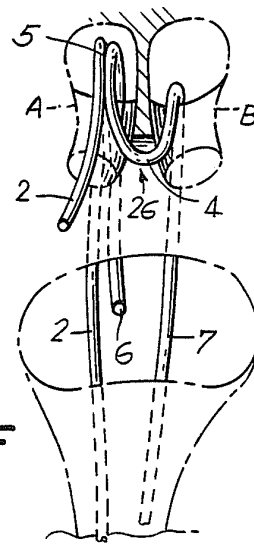


FIG. 2F

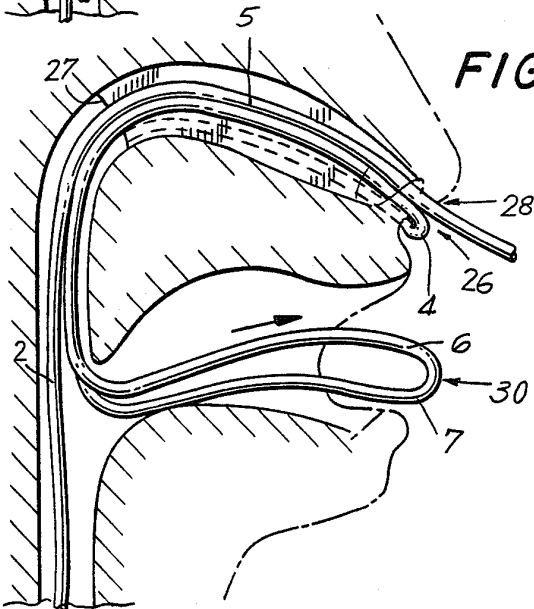


FIG. 2G

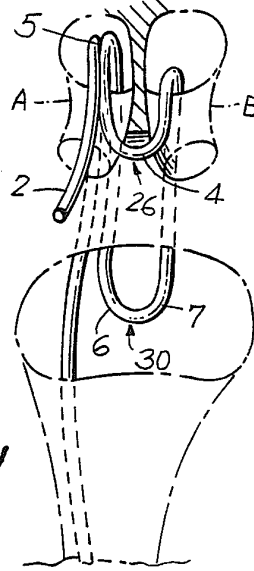
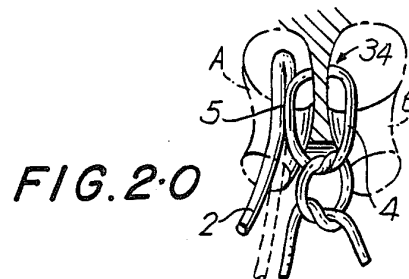
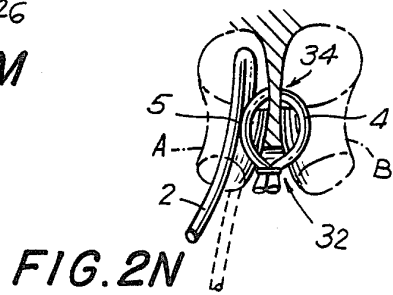
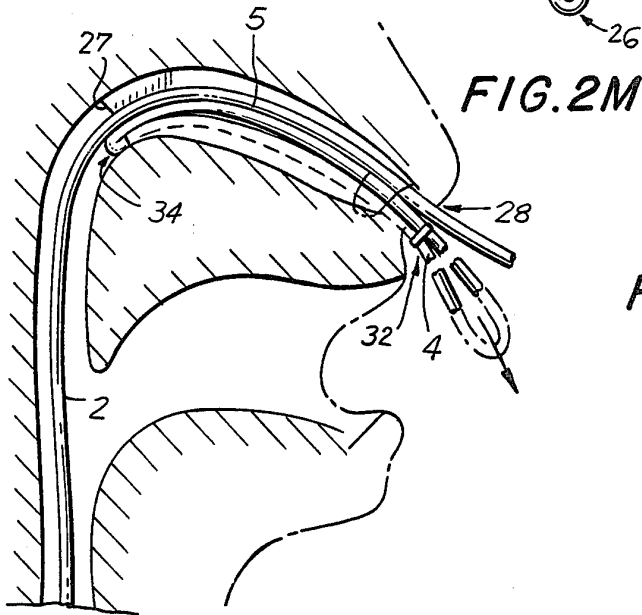
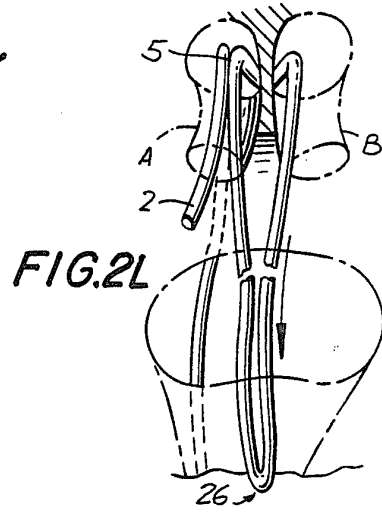
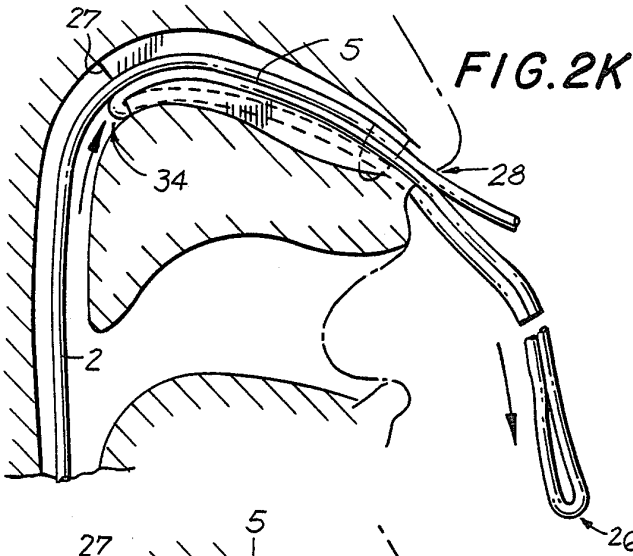
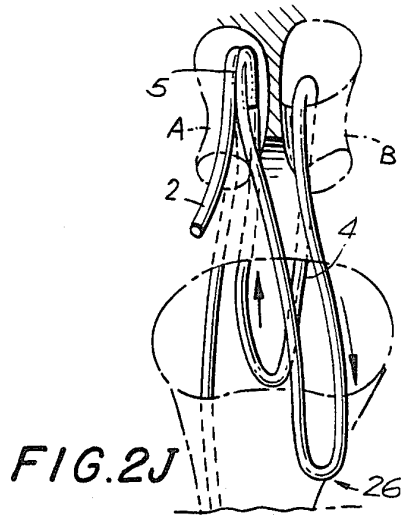
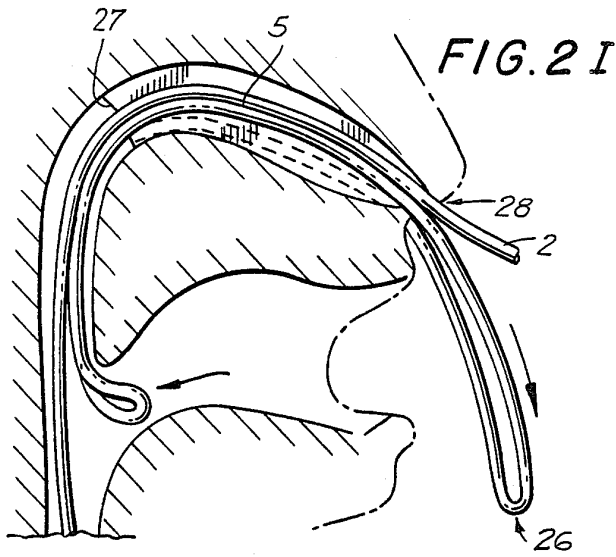


FIG. 2H



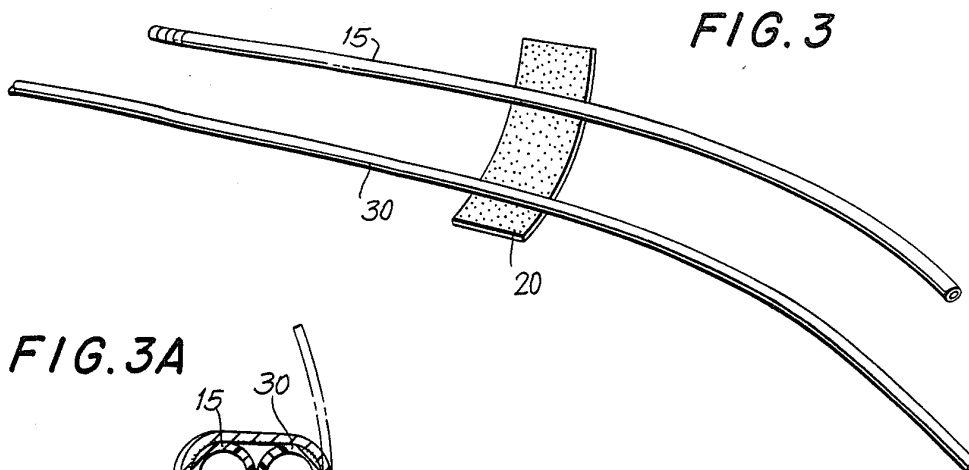


FIG. 3

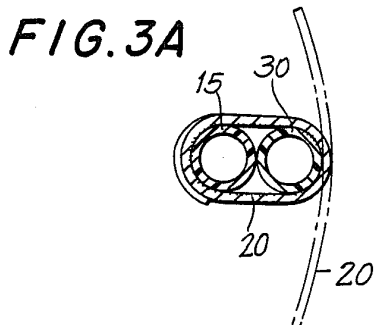


FIG. 3A

FIG. 4

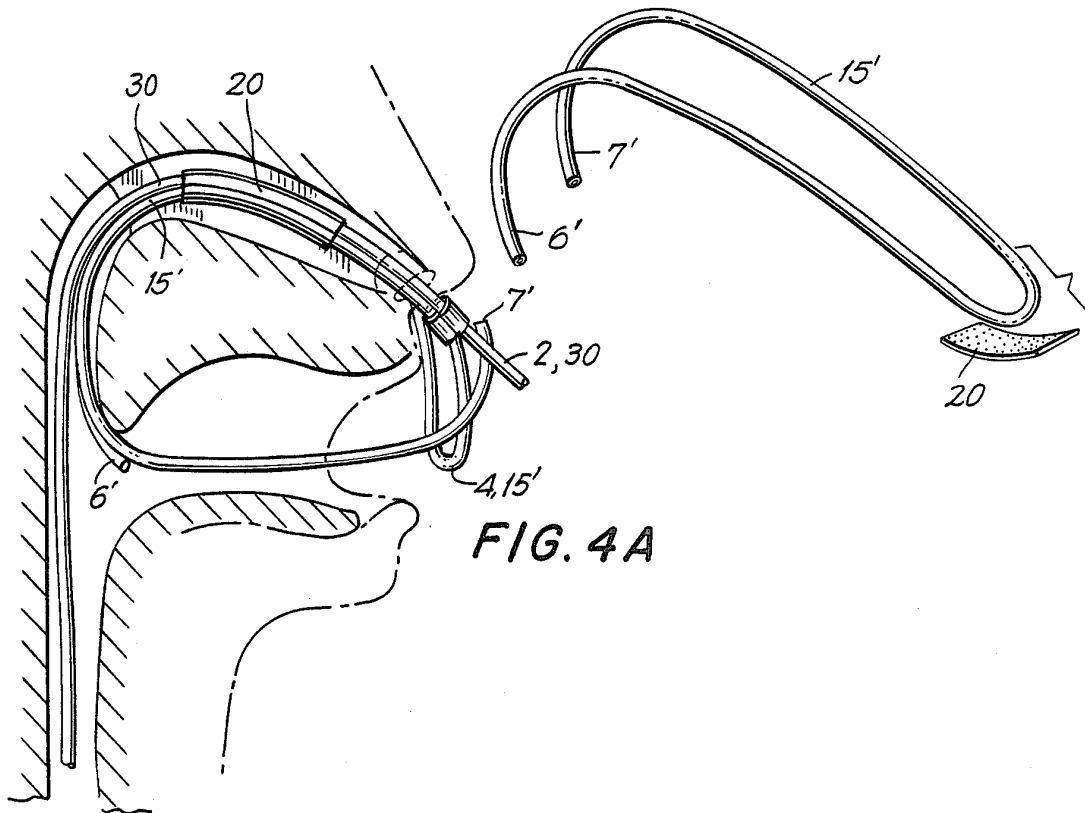


FIG. 4A

Explore Litigation Insights

Docket Alarm provides insights to develop a more informed litigation strategy and the peace of mind of knowing you're on top of things.

Real-Time Litigation Alerts



Keep your litigation team up-to-date with **real-time alerts** and advanced team management tools built for the enterprise, all while greatly reducing PACER spend.

Our comprehensive service means we can handle Federal, State, and Administrative courts across the country.

Advanced Docket Research



With over 230 million records, Docket Alarm's cloud-native docket research platform finds what other services can't. Coverage includes Federal, State, plus PTAB, TTAB, ITC and NLRB decisions, all in one place.

Identify arguments that have been successful in the past with full text, pinpoint searching. Link to case law cited within any court document via Fastcase.

Analytics At Your Fingertips



Learn what happened the last time a particular judge, opposing counsel or company faced cases similar to yours.

Advanced out-of-the-box PTAB and TTAB analytics are always at your fingertips.

API

Docket Alarm offers a powerful API (application programming interface) to developers that want to integrate case filings into their apps.

LAW FIRMS

Build custom dashboards for your attorneys and clients with live data direct from the court.

Automate many repetitive legal tasks like conflict checks, document management, and marketing.

FINANCIAL INSTITUTIONS

Litigation and bankruptcy checks for companies and debtors.

E-DISCOVERY AND LEGAL VENDORS

Sync your system to PACER to automate legal marketing.