

# APPENDIX A

MICRO  
E

## IXI's Claim Chart Regarding Microsoft Corporation's Infringement of U.S. Patent No. 8,000,000

### Claim 1

1. A method for programming a mobile communication device based on a high-level code comprising operative language, the method comprising:

Although the preamble to Claim 1 does not limit the scope of the claim, Microsoft and/or Microsoft and/or other Internet servers implementing Natural Language Search Features practice a method for programming a mobile communication device based on a high-level code comprising operative language, as explained below. Microsoft directly infringes Claim 1 on Microsoft Relevant Devices and/or Cortana and related software and Internet servers. Microsoft also infringes by contributing to infringement (by providing Cortana) and inducing infringement (by providing Microsoft Relevant Devices and/or Cortana with instructions) by end user manufacturers of Microsoft Relevant Devices.

Microsoft and/or users program Microsoft Relevant Devices via Natural Language Search Features using natural language, such as naturally spoken or written words, that are high-level code comprising operative language.

Microsoft Cortana is built into (and/or is downloaded to) Microsoft Relevant Devices and/or Internet servers with Microsoft and/or other Internet servers to allow for natural language voice search.

<sup>1</sup> IXI provides this claim chart for Microsoft Corporation (collectively, "Microsoft"). These contentions contain diagrams, screenshots, and other evidence by way of example and not by way of limitation. These contentions are based on publicly available information. IXI reserves the right to modify these contentions as discovery progresses, in response to Microsoft's defenses and any claim construction rulings, and otherwise for good cause.

<sup>2</sup> "Microsoft Relevant Devices" include every smartphone, tablet, laptop, X-Box, or other mobile communication device that includes a Natural Language Search Feature, including but not limited to all such devices installed with Windows Phone Version 8.1 or later or Windows 10 and device operation of Natural Language Search Features. Exemplary Microsoft Relevant Devices are listed in Exhibit 1 attached hereto.

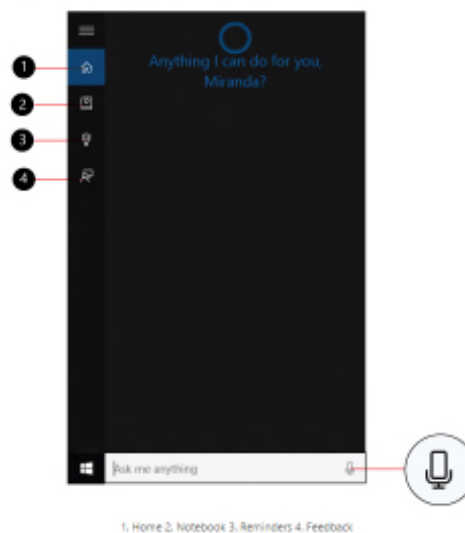
<sup>3</sup> "Natural Language Search Feature" includes Microsoft Cortana and/or any counterpart software on Microsoft and/or other Internet servers that is reasonably similar or related software.

## What is Cortana?

Cortana is your deaver new personal assistant.

Cortana will help you find things on your PC, manage your calendar, track packages, find files, chat with you, and tell jokes. The more you use Cortana, the more personalized your experience will be.

To get started, type a question in the search box on the taskbar. Or select the microphone icon and talk to Cortana. (Typing works for all types of PCs, but you need a mic to talk.)



1. Home 2. Notebook 3. Reminders 4. Feedback

(Microsoft's Webpage)

## Support natural language voice commands in Cortana



Karl-Bridge-Microsoft | Last Updated: 5/6/2016 | 5 Contributors

Extend **Cortana** with more flexible and natural voice commands that let a user say your app's name anywhere in the

(Microsoft's Webpage, "Support natural language voice commands in Cortana")

	<p>Is Cortana on?</p> <p>You may have turned on Cortana when you set up your phone. If you did, you'll see her when you press the Search  button.</p> <p>If you press the Search  button and see the Bing image of the day, that means Cortana's not on. To turn on Cortana, in the <a href="#">App list</a>, tap <b>Settings</b> , swipe over to <b>Applications</b>, tap <b>Cortana</b>, and then turn on <b>Cortana</b> .</p> <p>If you turn on Cortana, for her to work for you, Microsoft collects and uses your location, contacts, voice input, info from email and text messages, browser history, search history, calendar details, and other info.</p>  <p style="text-align: right;">(Microsoft's Webpage, "</p>
<p>receiving a high-level code comprising one or more keywords, wherein the high-level code is provided by a user of a mobile communication device to control the operation of the mobile communication device without having to select from menu items</p>	<p>Microsoft Relevant Devices, and/or Microsoft and/or other Internet servers implementing Natural Language Search Features, receive a high-level code comprising one or more keywords, wherein the high-level code is provided by a user of a mobile communication device to control the operation of the mobile communication device without having to select from menu items provided by the system running on the mobile communication device.</p> <p>As explained above in the content corresponding to the pre-amble, which is hereinafter by way of reference, Microsoft Relevant Devices, and/or Microsoft, and/or other Internet servers implementing Natural Language Search Features, receive natural language inquiries from users of mobile communication devices, that are high-level code including operative language with one or</p>

provided by an operating system running on the mobile communication device;

controlling the operation of the Microsoft Relevant Device.

Microsoft Relevant Devices, and/or Microsoft and/or other Internet servers, including communication interfaces (e.g., antennae, modems, network cards, and/or transceivers) and/or user input devices (e.g., touchscreens, keyboards, microphones) for receiving the claimed high-level code. Microsoft Relevant Devices receive high-level code including one or more keywords and phrases related to the Language Search Feature inquiries that a user inputs via a touchscreen, keyboard, or other user input device. Microsoft, and/or other Internet servers receive the high-level code, depending on the communication interfaces, such as antennae, modems, network cards, and/or transceivers, and/or communication networks (e.g., cellular networks), wireless local area networks (e.g., Wi-Fi networks), and/or the Internet. Cortana receives high level code through such interfaces.

Microsoft Relevant Devices receive high level code from users, without having to select from menu items, in a variety of ways, such as touching a microphone button and speaking into a microphone, touching a search icon in natural language after saying “Hey Cortana,” typing natural language text into a search box, or long pressing on the Windows button and speaking natural language, and/or other methods known in the art, particular to a device or operating system.

For example, as shown below, Microsoft Relevant Devices receive high level code from users without having to select from menu items, when they use Microsoft Cortana.

# Explore Litigation Insights

Docket Alarm provides insights to develop a more informed litigation strategy and the peace of mind of knowing you're on top of things.

## Real-Time Litigation Alerts



Keep your litigation team up-to-date with **real-time alerts** and advanced team management tools built for the enterprise, all while greatly reducing PACER spend.

Our comprehensive service means we can handle Federal, State, and Administrative courts across the country.

## Advanced Docket Research



With over 230 million records, Docket Alarm's cloud-native docket research platform finds what other services can't. Coverage includes Federal, State, plus PTAB, TTAB, ITC and NLRB decisions, all in one place.

Identify arguments that have been successful in the past with full text, pinpoint searching. Link to case law cited within any court document via Fastcase.

## Analytics At Your Fingertips



Learn what happened the last time a particular judge, opposing counsel or company faced cases similar to yours.

Advanced out-of-the-box PTAB and TTAB analytics are always at your fingertips.

## API

Docket Alarm offers a powerful API (application programming interface) to developers that want to integrate case filings into their apps.

## LAW FIRMS

Build custom dashboards for your attorneys and clients with live data direct from the court.

Automate many repetitive legal tasks like conflict checks, document management, and marketing.

## FINANCIAL INSTITUTIONS

Litigation and bankruptcy checks for companies and debtors.

## E-DISCOVERY AND LEGAL VENDORS

Sync your system to PACER to automate legal marketing.