



US006661434B1

(12) **United States Patent**
MacPhail

(10) **Patent No.:** **US 6,661,434 B1**
(45) **Date of Patent:** ***Dec. 9, 2003**

(54) **METHOD AND SYSTEM FOR DISPLAYING STATUS OF CRITICAL INDICATORS ON DIVERSE DISPLAY DEVICES**

5,953,010 A * 9/1999 Kampe et al. 345/772
6,421,700 B1 * 7/2002 Holmes et al. 345/772

* cited by examiner

(75) Inventor: **Margaret Gardner MacPhail**, Austin, TX (US)

Primary Examiner—John Cabeca
Assistant Examiner—Brian Detwiler

(73) Assignee: **International Business Machines Corporation**, Armonk, NY (US)

(74) *Attorney, Agent, or Firm*—Kevin L. Daffer; Conley Rose P.C.; Leslie Van Leeuwen

(*) Notice: Subject to any disclaimer, the term of this patent is extended or adjusted under 35 U.S.C. 154(b) by 0 days.

(57) **ABSTRACT**

In a system and method for displaying status of critical indicators or variables, icons representing the indicators are displayed in superposition with a reference shape. The reference shape is divided into "higher-interest" and "lower-interest" portions, such that display of an icon over the higher-interest portion of the reference shape indicates a higher-interest value of the corresponding variable. The reference shape is preferably elongated horizontally, with its upper portion designated as the higher-interest portion and its lower portion designated the lower-interest portion. Each monitored variable may be allocated a vertical "slice" of the reference shape, such that the position of the corresponding icon when the variable is in the higher-interest state is laterally aligned with the position of the icon when the variable is in the lower-interest state. In some embodiments, a single icon representing the present status of the corresponding variable is positioned over either the higher-interest or lower-interest portion of the reference shape. Alternatively, two icons may be used for each variable, where one is positioned over the higher-interest portion and the other over the lower-interest portion. This representation is believed to make the status of each monitored variable visible at a glance. The simplicity of the representation may allow it to be used effectively on various computational devices, including those with small, monochrome displays.

This patent is subject to a terminal disclaimer.

(21) Appl. No.: **09/548,696**

(22) Filed: **Apr. 13, 2000**

(51) **Int. Cl.**⁷ **G09G 5/00**

(52) **U.S. Cl.** **345/772; 345/846**

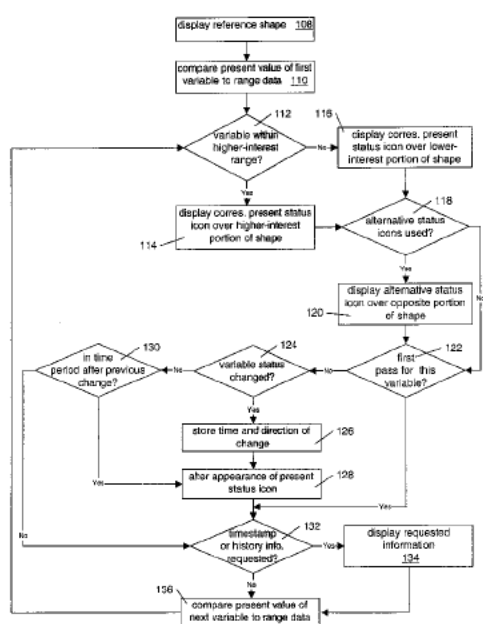
(58) **Field of Search** 345/440, 440.2, 345/736, 764, 771, 772, 835, 837, 846, 977; 700/27; 710/15, 17, 18, 19

(56) **References Cited**

U.S. PATENT DOCUMENTS

- 4,858,152 A 8/1989 Estes 702/186
- 5,333,256 A * 7/1994 Green et al. 345/772
- 5,369,589 A * 11/1994 Steiner 340/990
- 5,375,199 A * 12/1994 Harrow et al. 345/771
- 5,483,631 A 1/1996 Nagai et al. 345/736
- 5,610,813 A * 3/1997 Greenwald et al. 702/5
- 5,680,560 A * 10/1997 Gaertner 345/440
- 5,768,552 A 6/1998 Jacoby 345/441
- 5,819,028 A * 10/1998 Manghirmalani et al. ... 345/440
- 5,909,217 A * 6/1999 Bereiter 345/772

28 Claims, 6 Drawing Sheets



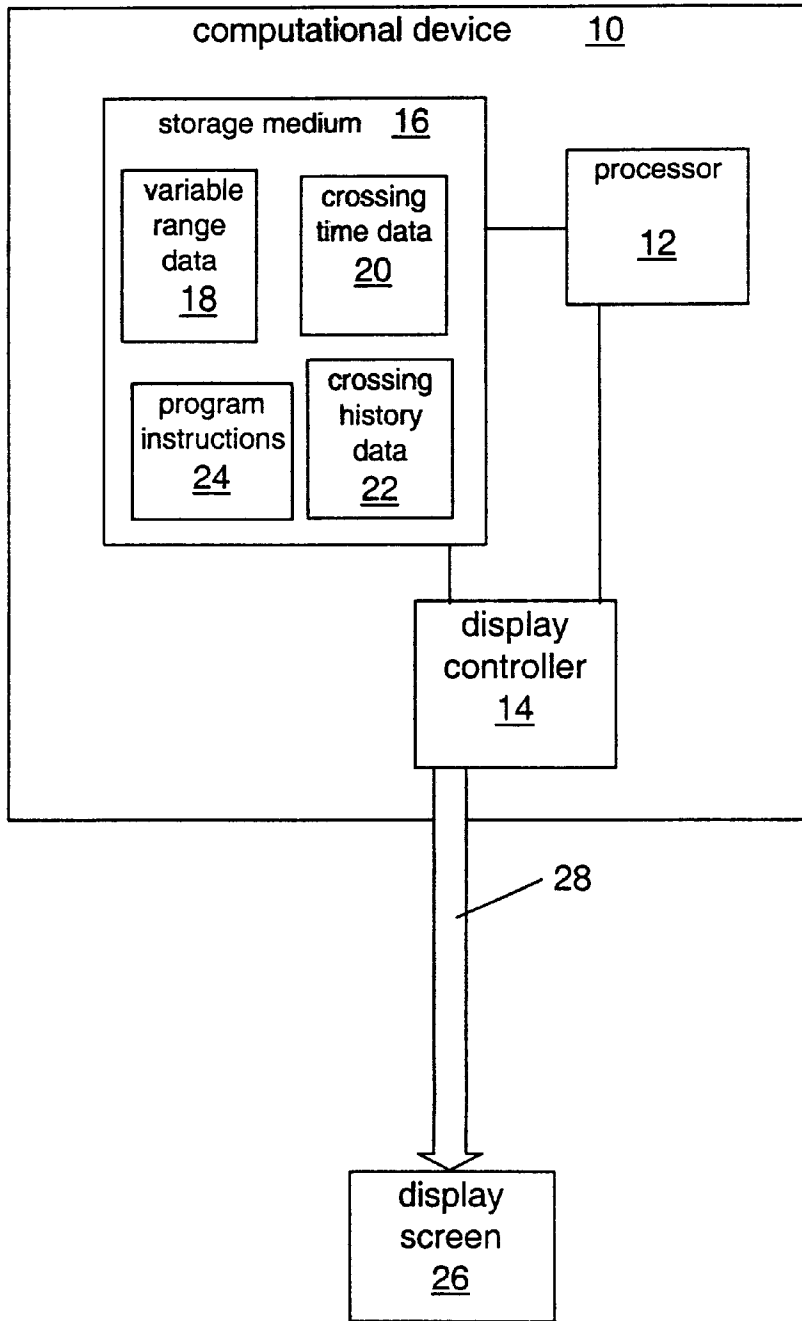


Fig. 1

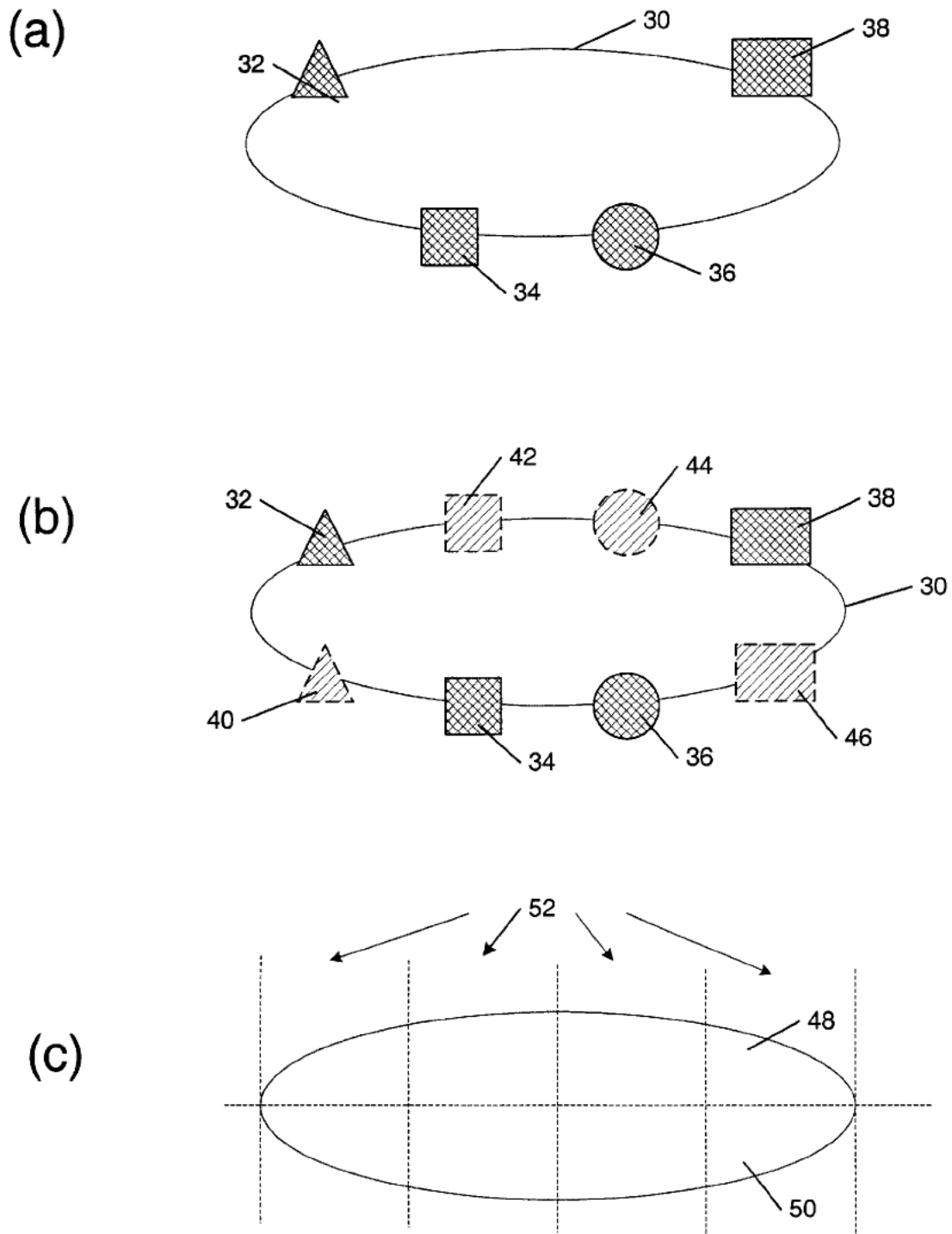


Fig. 2

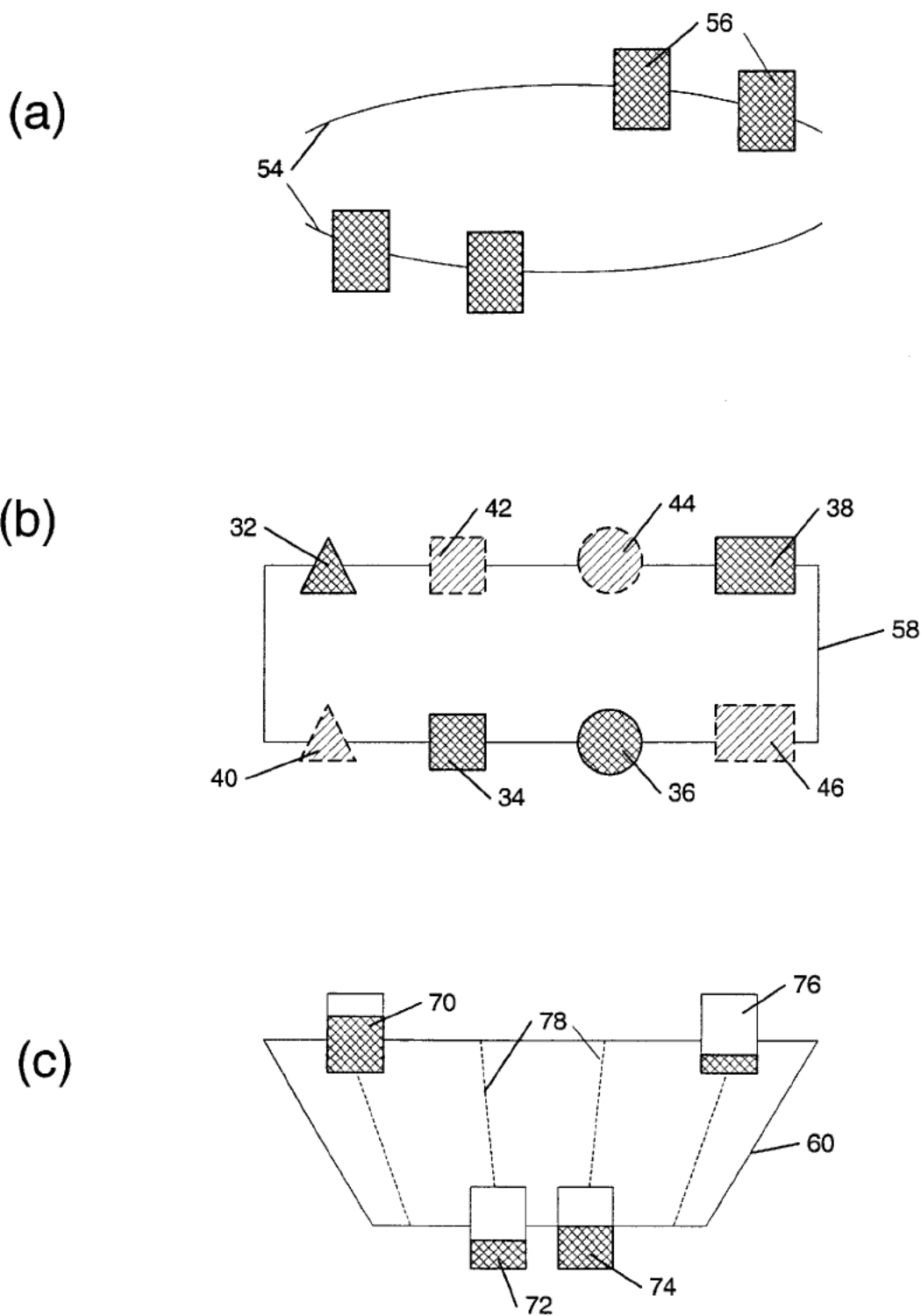


Fig. 3

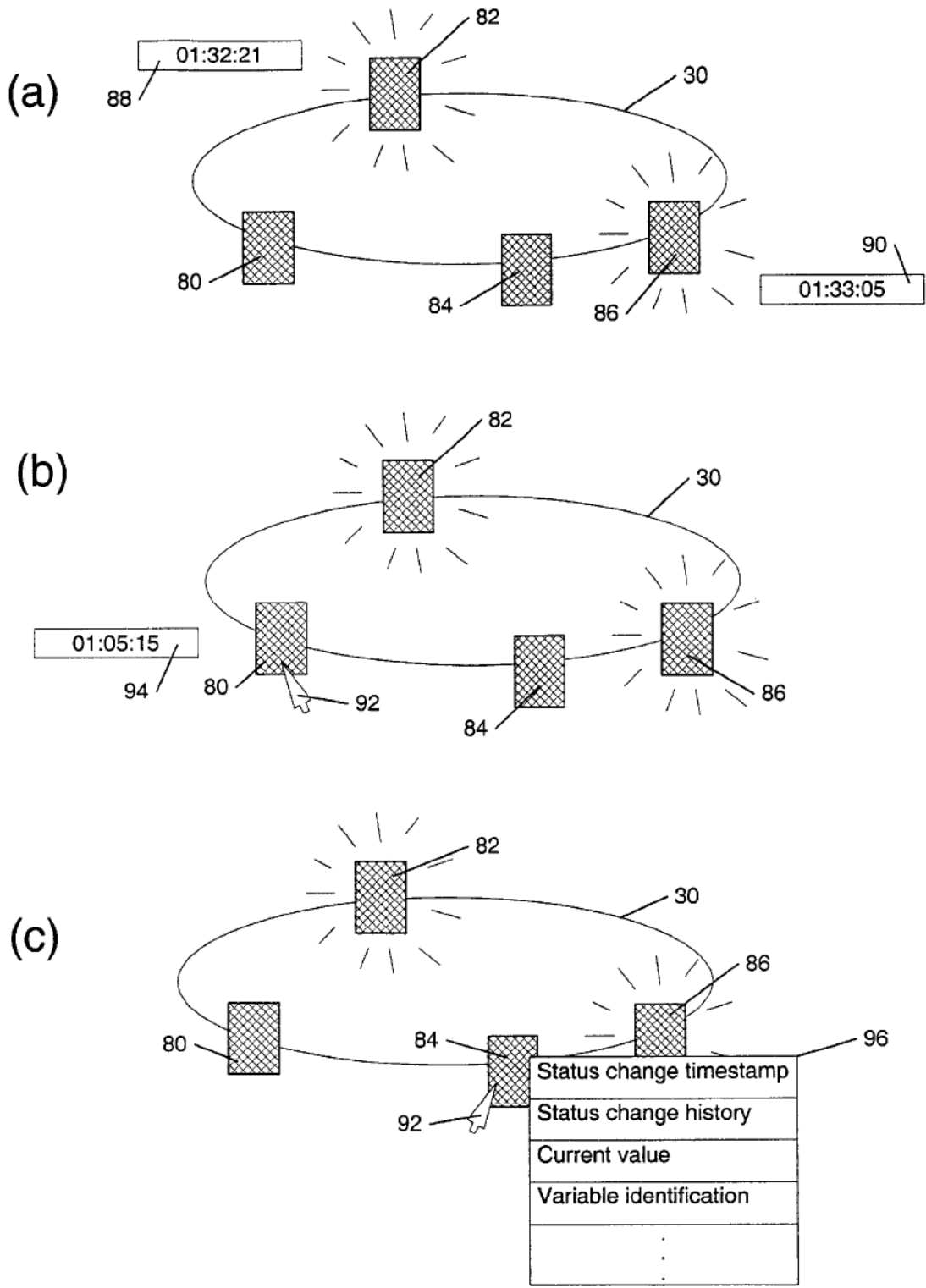


Fig. 4

Explore Litigation Insights

Docket Alarm provides insights to develop a more informed litigation strategy and the peace of mind of knowing you're on top of things.

Real-Time Litigation Alerts



Keep your litigation team up-to-date with **real-time alerts** and advanced team management tools built for the enterprise, all while greatly reducing PACER spend.

Our comprehensive service means we can handle Federal, State, and Administrative courts across the country.

Advanced Docket Research



With over 230 million records, Docket Alarm's cloud-native docket research platform finds what other services can't. Coverage includes Federal, State, plus PTAB, TTAB, ITC and NLRB decisions, all in one place.

Identify arguments that have been successful in the past with full text, pinpoint searching. Link to case law cited within any court document via Fastcase.

Analytics At Your Fingertips



Learn what happened the last time a particular judge, opposing counsel or company faced cases similar to yours.

Advanced out-of-the-box PTAB and TTAB analytics are always at your fingertips.

API

Docket Alarm offers a powerful API (application programming interface) to developers that want to integrate case filings into their apps.

LAW FIRMS

Build custom dashboards for your attorneys and clients with live data direct from the court.

Automate many repetitive legal tasks like conflict checks, document management, and marketing.

FINANCIAL INSTITUTIONS

Litigation and bankruptcy checks for companies and debtors.

E-DISCOVERY AND LEGAL VENDORS

Sync your system to PACER to automate legal marketing.