

UNITED STATES PATENT AND TRADEMARK OFFICE

---

BEFORE THE PATENT TRIAL AND APPEAL BOARD

---

UNIFIED PATENTS INC.,  
Petitioner,

v.

GENERAL ACCESS SOLUTIONS, LTD.,  
Patent Owner.

---

Case IPR2017-01178  
Patent 9,225,555 B2

---

Before KEN B. BARRETT, JEFFREY A. STEPHENS, and  
CHRISTA P. ZADO, *Administrative Patent Judges*.

Opinion for the Board filed by ZADO, *Administrative Patent Judge*.

Opinion Dissenting filed by STEPHENS, *Administrative Patent Judge*.

ZADO, *Administrative Patent Judge*.

FINAL WRITTEN DECISION  
35 U.S.C. § 318(a) and 37 C.F.R. § 42.73

## I. INTRODUCTION

### A. *Background and Summary*

Unified Patents, Inc. (“Petitioner”) filed a request for *inter partes* review of claims 1–20 (the “challenged claims”) of U.S. Patent No. 9,225,555 B2 (“the ’555 patent,” Ex. 1001). Paper 2 (“Pet.”). General Access Solutions, Ltd. (“Patent Owner”) filed a Preliminary Response. Paper 6 (“Prelim. Resp.”). We instituted an *inter partes* review of all challenged claims on all asserted grounds, specifically patentability under 35 U.S.C. § 103(a) of (1) claims 1–20 as obvious over Hohnstein<sup>1</sup> and Phillips,<sup>2</sup> and (2) claims 1–20 as obvious over Hohnstein and Agrawal.<sup>3</sup> Paper 7 (“Inst. Dec.”).

Subsequent to institution, Patent Owner filed a Response. Paper 12 (“PO Resp.”). Petitioner filed a Reply. Paper 13 (“Reply”). Oral hearing was held on June 14, 2018. Paper 20 (“Tr.”).

We have jurisdiction under 35 U.S.C. § 6(b). This Final Written Decision is issued pursuant to 35 U.S.C. § 318(a). Having reviewed the arguments of the parties and the supporting evidence, we find that Petitioner has demonstrated by a preponderance of the evidence that each of the challenged claims is unpatentable. 35 U.S.C. § 316(e); 37 C.F.R. § 42.1(d).

---

<sup>1</sup> U.S. Patent No. 6,816,706 B1 (issued Nov. 9, 2004). (Ex. 1002).

<sup>2</sup> John A. Phillips & Gerard Mac Namee, *Personal Wireless Communication With DECT and PWT* (1998). (Ex. 1003).

<sup>3</sup> U.S. Patent No. 5,722,051 (issued Feb. 24, 1998). (Ex. 1005).

*B. Related Matters*

The parties assert the '555 patent is involved in the following proceedings: *General Access Solutions, Ltd. v. Pantech Co., Ltd. et al.*, Civil Action No. 2:16-cv-01348-RWS (E.D. Tex.); *General Access Solutions, Ltd. v. LG Electronics, Inc. et al.*, Civil Action No. 2:16-cv-01349-RWS (E.D. Tex.); *General Access Solutions, Ltd. v. Novatel Wireless, Inc.*, Civil Action No. 2:16-cv-01350-RWS (E.D. Tex.); *General Access Solutions, Ltd. v. Xiaomi, Inc.*, Civil Action No. 2:16-cv-01351-RWS (E.D. Tex.). Pet. 1–2; Paper 5, 2.

*C. The '555 Patent*

The '555 patent was filed on August 6, 2012. Ex. 1001, [21]. The '555 patent claims priority, through a series of continuations, to an application filed on April 20, 2001 (hereinafter, “critical date”), the earliest possible filing date to which the '555 patent can claim priority. *Id.* at [63]. The parties do not dispute this is the priority date for the '555 patent.

The '555 patent describes wireless communication systems that include a wireless communication device in communication both with a base station and mobile stations. Ex. 1001, 5:29–32. Figure 2 is reproduced below.

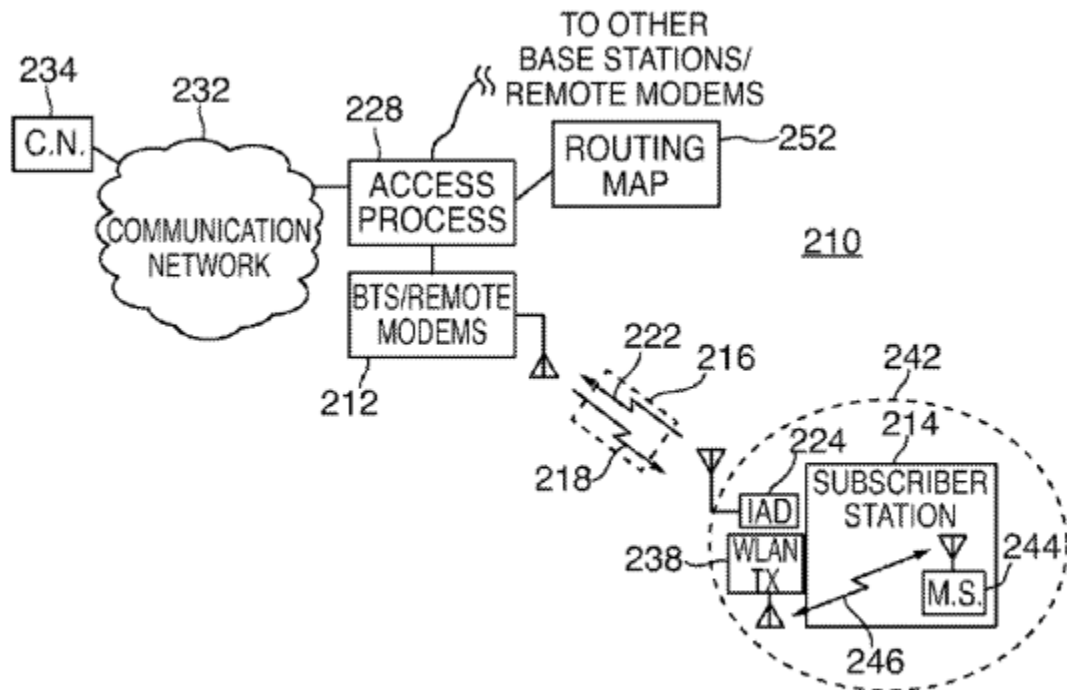


FIG. 2

Figure 2 “illustrates a functional block diagram of a fixed wireless access (FWA) communication system.” Ex. 1001, 6:25–26. Communication system 210 provides for radio communications between a fixed-site base station, of which base station 212 is exemplary, and fixed site subscriber stations, of which subscriber station 214 is exemplary. *Id.* at 7:33–37. Located at subscriber station 214 is integrated access device (“IAD”) 224 which forms a transceiver that transmits signals to and receives signals from base station 212. *Id.* at 7:42–49. Base station 212 is coupled to access process 228, which is coupled to communication network 232—a network such as a public switched telephone network or packet data network. *Id.* at 7:56–62. Coupled to communication network 232 is correspondent node 234. *Id.* at 7:62–63. Accordingly, a communication path may be formed between IAD 224 and correspondent node 234. *Id.* at 63–67.

Also located at subscriber station 214 is wireless local area network (“WLAN”) transceiver 238 connected to the circuitry of IAD 224. *Id.* at 8:5–8. “The WLAN transceiver defines a coverage area 242 defining a cell.” *Id.* at 8:8–9. Mobile station 244 positioned within cell 242 is capable of communicating with WLAN transceiver 238. *Id.* at 8:9–11. “Because of the connection of the WLAN transceiver to the transceiver of [IAD 224], signals originated at the mobile station . . . can . . . be provided to the transceiver of [IAD 224] . . . and, thereafter, be communicated to another device, such as the correspondent node 234.” *Id.* at 8:19–26. “Analogously, signals originated at . . . correspondent node [234], or elsewhere, can be communicated to the mobile station.” *Id.* at 8:26–28.

Figure 5 is reproduced below.

# Explore Litigation Insights

Docket Alarm provides insights to develop a more informed litigation strategy and the peace of mind of knowing you're on top of things.

## Real-Time Litigation Alerts



Keep your litigation team up-to-date with **real-time alerts** and advanced team management tools built for the enterprise, all while greatly reducing PACER spend.

Our comprehensive service means we can handle Federal, State, and Administrative courts across the country.

## Advanced Docket Research



With over 230 million records, Docket Alarm's cloud-native docket research platform finds what other services can't. Coverage includes Federal, State, plus PTAB, TTAB, ITC and NLRB decisions, all in one place.

Identify arguments that have been successful in the past with full text, pinpoint searching. Link to case law cited within any court document via Fastcase.

## Analytics At Your Fingertips



Learn what happened the last time a particular judge, opposing counsel or company faced cases similar to yours.

Advanced out-of-the-box PTAB and TTAB analytics are always at your fingertips.

## API

Docket Alarm offers a powerful API (application programming interface) to developers that want to integrate case filings into their apps.

## LAW FIRMS

Build custom dashboards for your attorneys and clients with live data direct from the court.

Automate many repetitive legal tasks like conflict checks, document management, and marketing.

## FINANCIAL INSTITUTIONS

Litigation and bankruptcy checks for companies and debtors.

## E-DISCOVERY AND LEGAL VENDORS

Sync your system to PACER to automate legal marketing.