



US 20020103892A1

(19) **United States**

(12) **Patent Application Publication** (10) **Pub. No.: US 2002/0103892 A1**

**Rieger, III**

(43) **Pub. Date: Aug. 1, 2002**

(54) **SYSTEM FOR COMMUNICATING THROUGH MAPS**

**Publication Classification**

(76) **Inventor: Charles J. Rieger III, Potomac, MD (US)**

(51) **Int. Cl.<sup>7</sup> ..... G06F 15/173**  
(52) **U.S. Cl. .... 709/223**

Correspondence Address:  
**STERNE, KESSLER, GOLDSTEIN & FOX PLLC**  
**1100 NEW YORK AVENUE, N.W., SUITE 600**  
**WASHINGTON, DC 20005-3934 (US)**

(57) **ABSTRACT**

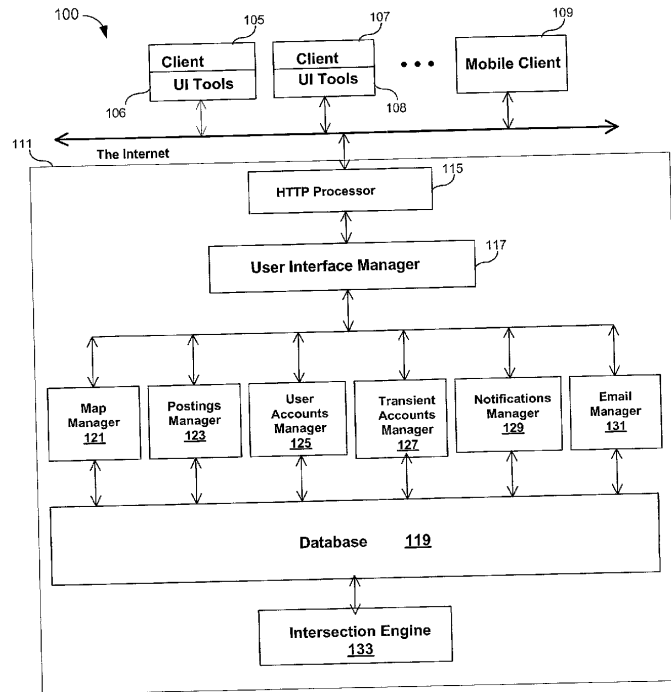
A communications system to post arbitrary information to any geographical region simply by outlining the region on a map in the system's user interface and attaching the information to the outlined region is provided. The outlined region can be of any size, e.g., a city block, a neighborhood, a county, and defines the information's "region of relevance". Any user of the system can also browse and receive these geographically relevant postings simply by identifying a point or region of interest on one of the system's maps. Uses of the system range from personal communication of questions and announcements to a geographically identified group, to governmental and commercial news and announcements aimed at a particular population, to "virtual billboards" for advertising.

(21) **Appl. No.: 10/025,880**

(22) **Filed: Dec. 26, 2001**

**Related U.S. Application Data**

(63) **Continuation-in-part of application No. 09/524,888, filed on Mar. 14, 2000.**



IBM EX. 1009

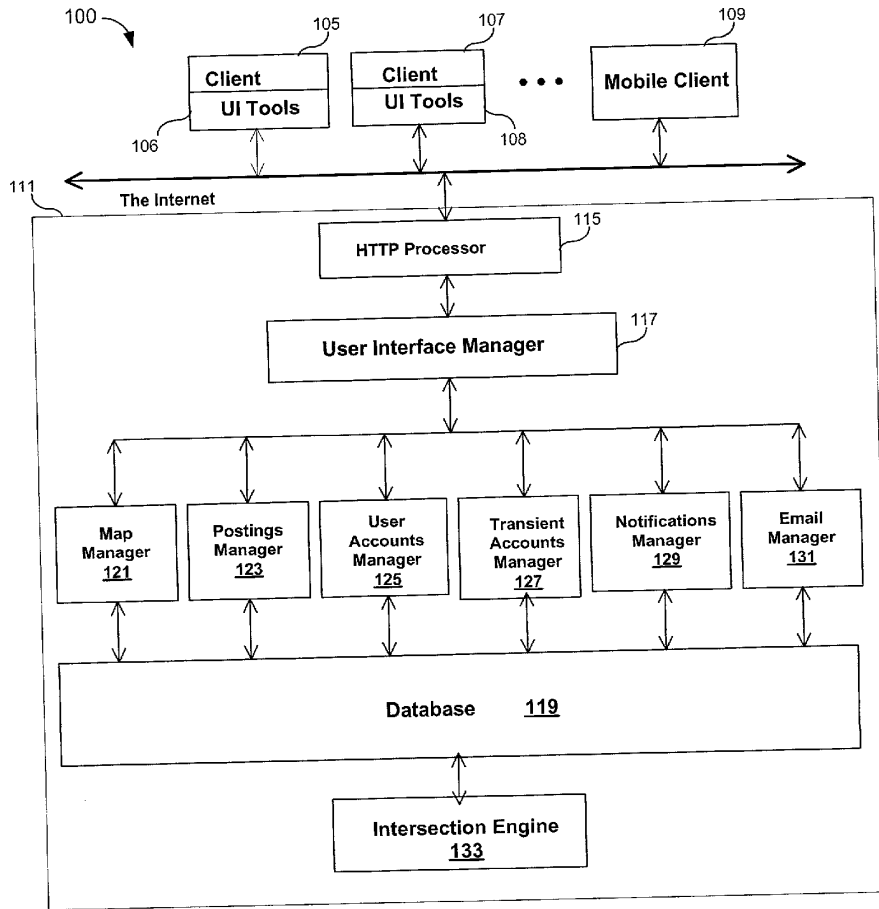


FIG. 1

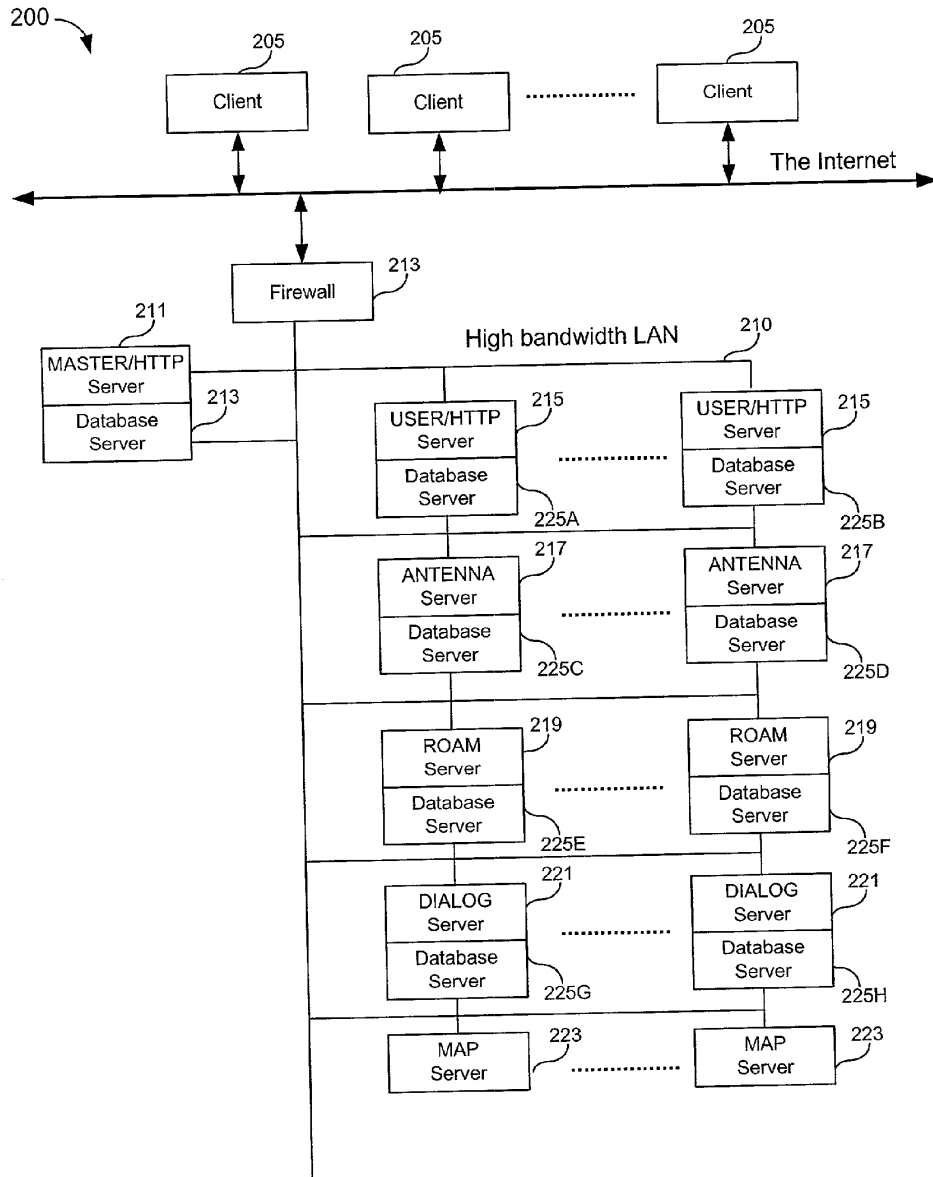


FIG. 2

Ping Topic 'Tennis' for Antenna 'HOME'

Update now Cancel

301	Topic name:	Tennis
303	Respond to ping key words:	tennis & partner
305	Respond with message:	Looking for a tennis partner? I play at level 4 (on good days!)
307	<input checked="" type="checkbox"/>	Include my personal icon along with my ping responses
309	<input checked="" type="checkbox"/>	Allow responses to my ping response
311	<input type="checkbox"/>	Allow user to link to my home antenna

FIG. 3

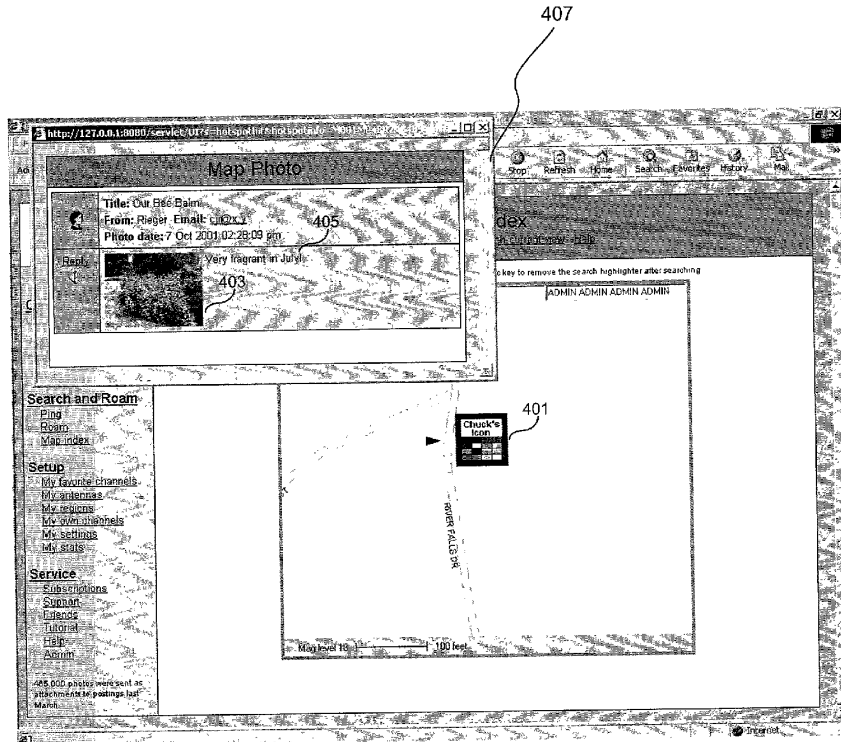


FIG. 4

# Explore Litigation Insights

Docket Alarm provides insights to develop a more informed litigation strategy and the peace of mind of knowing you're on top of things.

## Real-Time Litigation Alerts



Keep your litigation team up-to-date with **real-time alerts** and advanced team management tools built for the enterprise, all while greatly reducing PACER spend.

Our comprehensive service means we can handle Federal, State, and Administrative courts across the country.

## Advanced Docket Research



With over 230 million records, Docket Alarm's cloud-native docket research platform finds what other services can't. Coverage includes Federal, State, plus PTAB, TTAB, ITC and NLRB decisions, all in one place.

Identify arguments that have been successful in the past with full text, pinpoint searching. Link to case law cited within any court document via Fastcase.

## Analytics At Your Fingertips



Learn what happened the last time a particular judge, opposing counsel or company faced cases similar to yours.

Advanced out-of-the-box PTAB and TTAB analytics are always at your fingertips.

## API

Docket Alarm offers a powerful API (application programming interface) to developers that want to integrate case filings into their apps.

## LAW FIRMS

Build custom dashboards for your attorneys and clients with live data direct from the court.

Automate many repetitive legal tasks like conflict checks, document management, and marketing.

## FINANCIAL INSTITUTIONS

Litigation and bankruptcy checks for companies and debtors.

## E-DISCOVERY AND LEGAL VENDORS

Sync your system to PACER to automate legal marketing.