



(12) **United States Patent**
Niwa

(10) **Patent No.:** **US 6,453,301 B1**
(45) **Date of Patent:** **Sep. 17, 2002**

(54) **METHOD OF USING PERSONAL DEVICE WITH INTERNAL BIOMETRIC IN CONDUCTING TRANSACTIONS OVER A NETWORK**

FOREIGN PATENT DOCUMENTS

WO WO-95/13591 A1 * 5/1995
WO WO 99/06928 A1 * 2/1999

OTHER PUBLICATIONS

Drury: "Demand jumps for high-tech ID producer"; Business First, Oct. 22, 2001, vol. 18, No. 3, p. 1.*
Pack: "Traditional Retailers Plan Interactive Stores"; Orlando Sentinel, May 25, 1995.*

* cited by examiner

Primary Examiner—Edward R. Cosimano

(74) *Attorney, Agent, or Firm*—Lerner, David, Littenberg, Krumholz & Mentlik, LLP

(57) **ABSTRACT**

A method of authorizing a commercial transaction between a customer and a provider of goods or services over a network, wherein the provider of goods or services requests that the customer provide authentication by activating a fingerprint identification device, and the provider of goods or services receives at least an authentication code of the customer over the network from the fingerprint identification device, the method comprising the steps of: providing the customer with the fingerprint identification device which produces the authentication code when a fingerprint of the customer matches a stored fingerprint within the fingerprint identification device; receiving at least the authentication code from the provider of goods or services over the network; and authorizing the transaction if at least the authentication code is valid.

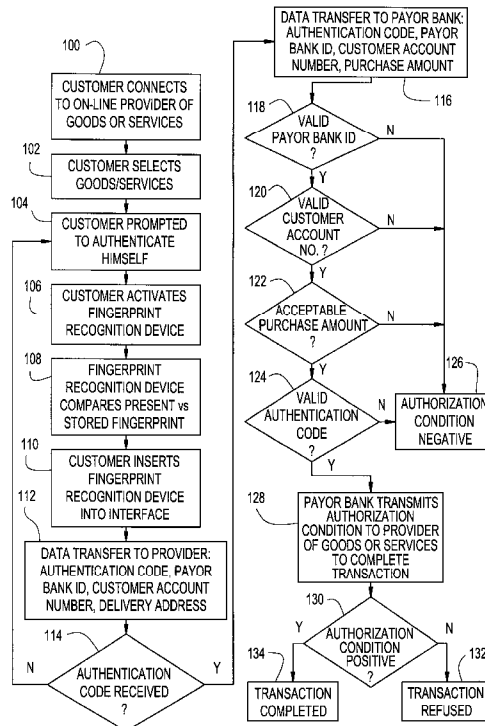
50 Claims, 6 Drawing Sheets

- (75) Inventor: **Kiyohiko Niwa**, Haworth, NJ (US)
- (73) Assignees: **Sony Corporation (JP); Sony Electronics, Inc.**, Park Ridge, NJ (US)
- (*) Notice: Subject to any disclaimer, the term of this patent is extended or adjusted under 35 U.S.C. 154(b) by 0 days.
- (21) Appl. No.: **09/510,811**
- (22) Filed: **Feb. 23, 2000**
- (51) **Int. Cl.**⁷ **G06F 17/60**
- (52) **U.S. Cl.** **705/26; 705/17; 705/18; 705/50; 705/65; 705/75**
- (58) **Field of Search** **705/17, 18, 26, 705/27, 50, 65, 74, 75, 76, 77**

(56) **References Cited**

U.S. PATENT DOCUMENTS

4,582,985 A	4/1986	Löftberg	235/380
5,615,277 A *	3/1997	Hoffman et al.	382/115
5,623,552 A	4/1997	Lane	382/124
5,737,701 A *	4/1998	Rosenthal et al.	455/411
5,990,804 A	11/1999	Koyama	340/825.34
6,002,787 A *	12/1999	Takhar et al.	382/125
6,105,010 A *	8/2000	Musgrave	705/44
6,119,096 A *	9/2000	Mann et al.	705/5



Apple 1017

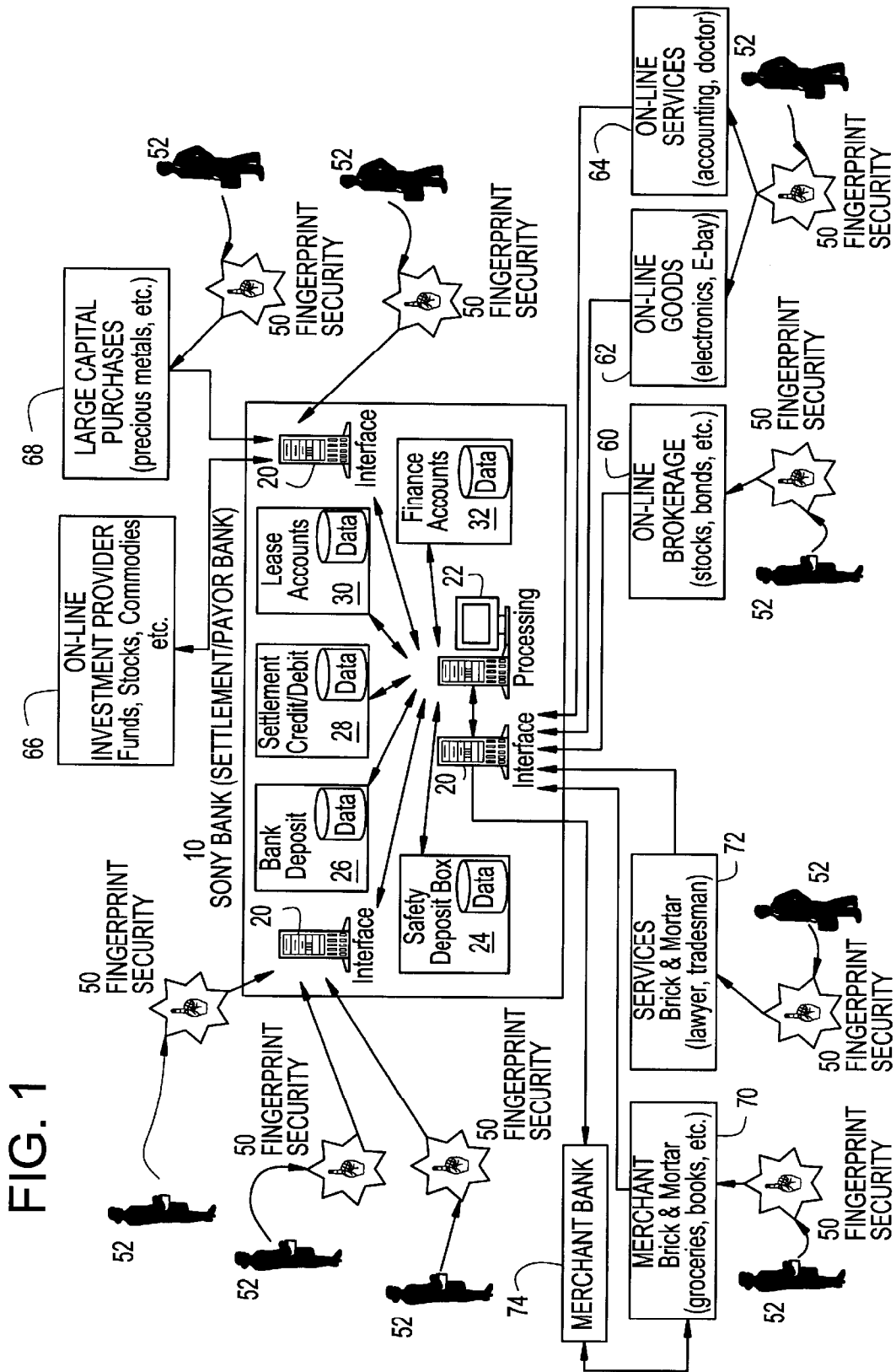


FIG. 2

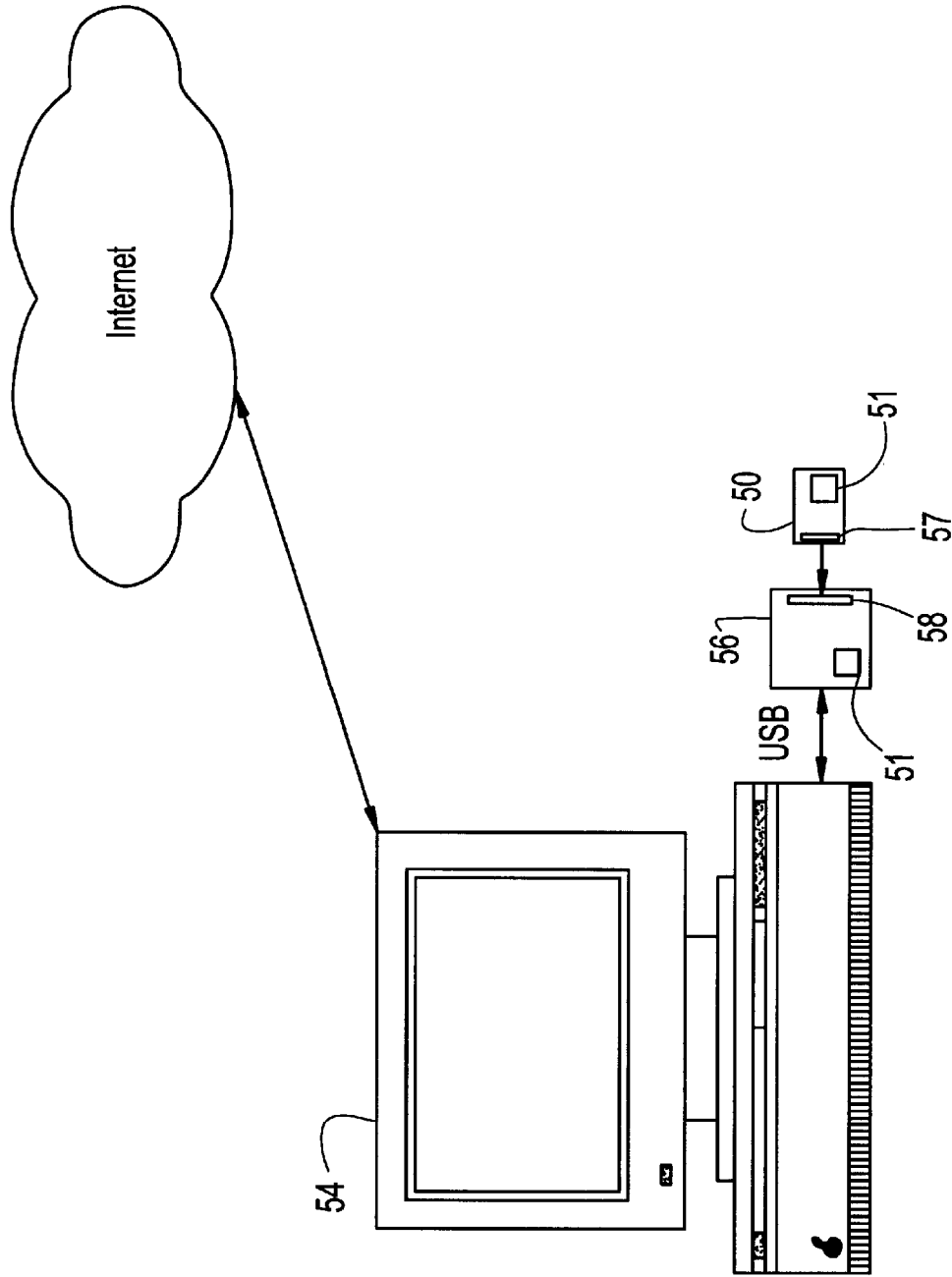


FIG. 3

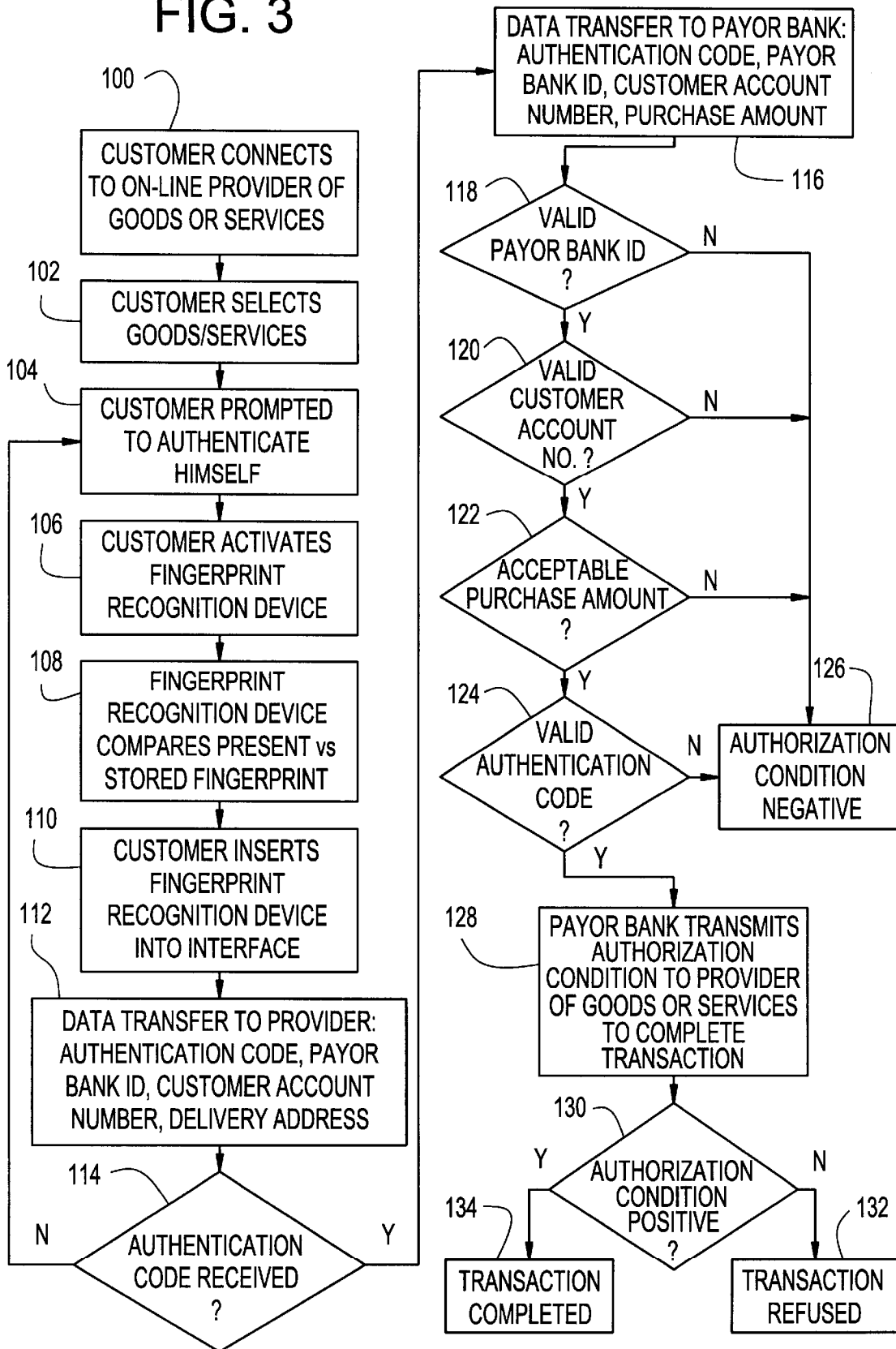
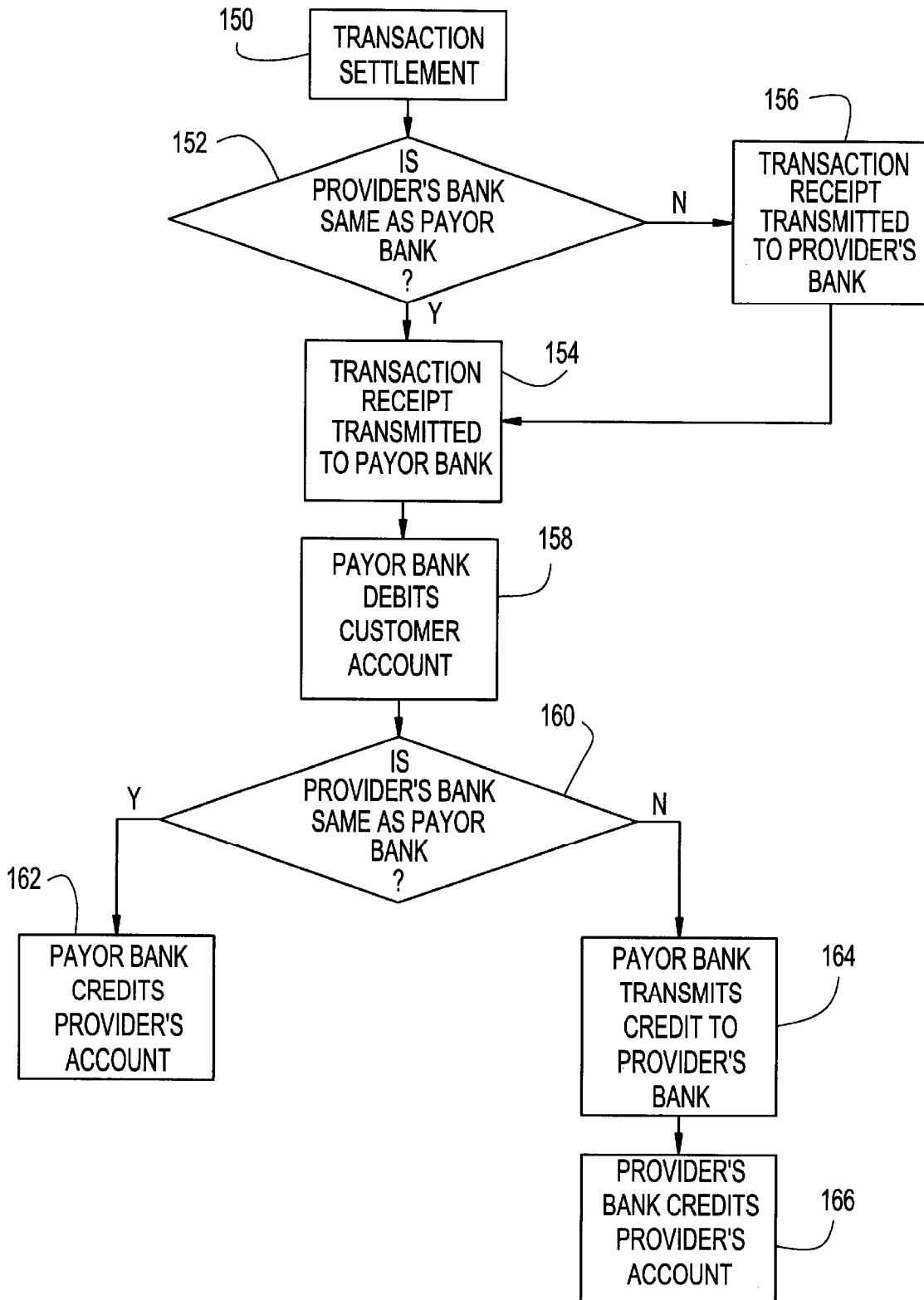


FIG. 4



Explore Litigation Insights

Docket Alarm provides insights to develop a more informed litigation strategy and the peace of mind of knowing you're on top of things.

Real-Time Litigation Alerts



Keep your litigation team up-to-date with **real-time alerts** and advanced team management tools built for the enterprise, all while greatly reducing PACER spend.

Our comprehensive service means we can handle Federal, State, and Administrative courts across the country.

Advanced Docket Research



With over 230 million records, Docket Alarm's cloud-native docket research platform finds what other services can't. Coverage includes Federal, State, plus PTAB, TTAB, ITC and NLRB decisions, all in one place.

Identify arguments that have been successful in the past with full text, pinpoint searching. Link to case law cited within any court document via Fastcase.

Analytics At Your Fingertips



Learn what happened the last time a particular judge, opposing counsel or company faced cases similar to yours.

Advanced out-of-the-box PTAB and TTAB analytics are always at your fingertips.

API

Docket Alarm offers a powerful API (application programming interface) to developers that want to integrate case filings into their apps.

LAW FIRMS

Build custom dashboards for your attorneys and clients with live data direct from the court.

Automate many repetitive legal tasks like conflict checks, document management, and marketing.

FINANCIAL INSTITUTIONS

Litigation and bankruptcy checks for companies and debtors.

E-DISCOVERY AND LEGAL VENDORS

Sync your system to PACER to automate legal marketing.