

United States Patent [19]

[11] Patent Number: 5,822,196

Hastings et al.

[45] Date of Patent: Oct. 13, 1998

[54] SECURING A CARD IN AN ELECTRONIC DEVICE

5,581,712 12/1996 Herrmann 395/283
5,625,238 4/1997 Ady et al. 307/147
5,629,836 5/1997 Wright 361/755

[75] Inventors: Robert J. Hastings, Humble; Paily T. Varghese; Joseph R. Allen, both of Tomball, all of Tex.

FOREIGN PATENT DOCUMENTS

0 241 905 A2 10/1987 European Pat. Off. .
0 254 456 A2 1/1988 European Pat. Off. .
2850440 11/1977 Germany .
3409021 3/1984 Germany .
WO 93/15459 8/1993 WIPO .

[73] Assignee: Compaq Computer Corporation, Houston, Tex.

OTHER PUBLICATIONS

[21] Appl. No.: 658,385

Hot Plug Receptacle Actuated Mechanical Latch; pp. 363-364; IBM Technical Disclosure Bulletin, vol. 34, No. 6; Nov. 1991.

[22] Filed: Jun. 5, 1996

CompactPCI™ Specification; Revision 1.0; pp. 14, 36, and 50; PCI Industrial Computers; Nov. 1, 1995.

[51] Int. Cl.⁶ H05K 7/14

[52] U.S. Cl. 361/801; 361/683; 361/754; 361/798

Don Anderson; Card Bus System Architecture, PC System Architecture Series, Second Edition; pp. 17-29, 39-58, 227-236, 321-361; Minshare, Inc., Richardson, TX.; ©1996.

[58] Field of Search 361/724-727, 361/684, 726, 801, 796, 798, 752, 802, 754, 683, 686, 748, 759; 439/61, 62, 152, 153, 157; 200/50.26, 51.09, 335

Don Anderson; PCMCIA System Architecture, PC System Architecture Series, Second Edition; pp. 21-83, 113-141, 145-162, 229-309, 321-332; Mindshare, Inc., Richardson, TX., ©1995.

[56] References Cited

U.S. PATENT DOCUMENTS

Table with 4 columns: Patent No., Date, Inventor, and Patent No.
3,767,974 10/1973 Donovan, Jr. et al. 361/798
3,853,379 12/1974 Goodman et al. 439/261
4,596,907 6/1986 LaGreco et al. 200/50 A
4,628,413 12/1986 Speraw 361/798
4,835,737 5/1989 Herrig et al. 364/900
4,875,867 10/1989 Hoo 361/798 X
4,999,787 3/1991 McNally et al. 364/514
5,003,431 3/1991 Imsdahl 361/798
5,010,426 4/1991 Krenz 361/726 X
5,191,970 3/1993 Brockway et al. 200/335
5,247,619 9/1993 Mutoh et al. 395/325
5,310,998 5/1994 Okuno 235/380
5,317,482 5/1994 Bujtas 361/798
5,317,483 5/1994 Swindler 361/801
5,428,507 6/1995 Chatel et al. 361/798
5,454,080 9/1995 Fasig et al. 395/283
5,473,499 12/1995 Weir 361/58
5,504,656 4/1996 Joist 361/754
5,513,329 4/1996 Pecone 395/281
5,530,302 6/1996 Hamre et al. 307/147
5,555,510 9/1996 Versepud et al. 364/514

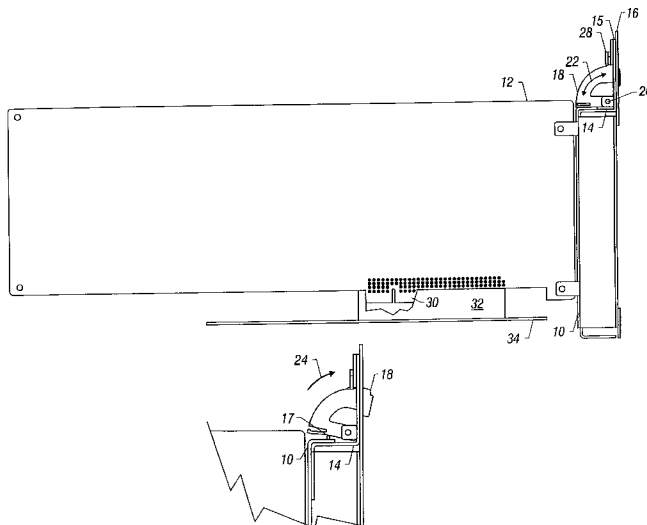
Maintenance & Service Guide, Compaq Deskpro XL Series of Personal Computers, Compaq Corporation, Houston, Texas (Dec. 15, 1995).

Primary Examiner—Michael W. Phillips
Assistant Examiner—Jayprakash N. Gandhi
Attorney, Agent, or Firm—Fish & Richardson P.C.

[57] ABSTRACT

An add-in circuit card is secured in an electronic device. A clamp is movably coupled to the electronic device and is configured to releasably engage the card upon movement of the clamp from a card engagement position to a card disengagement position. A switch may control electrical power to the card, the switch operated by the clamp such that movement of the clamp between the engagement and disengagement positions closes and opens the switch.

25 Claims, 8 Drawing Sheets



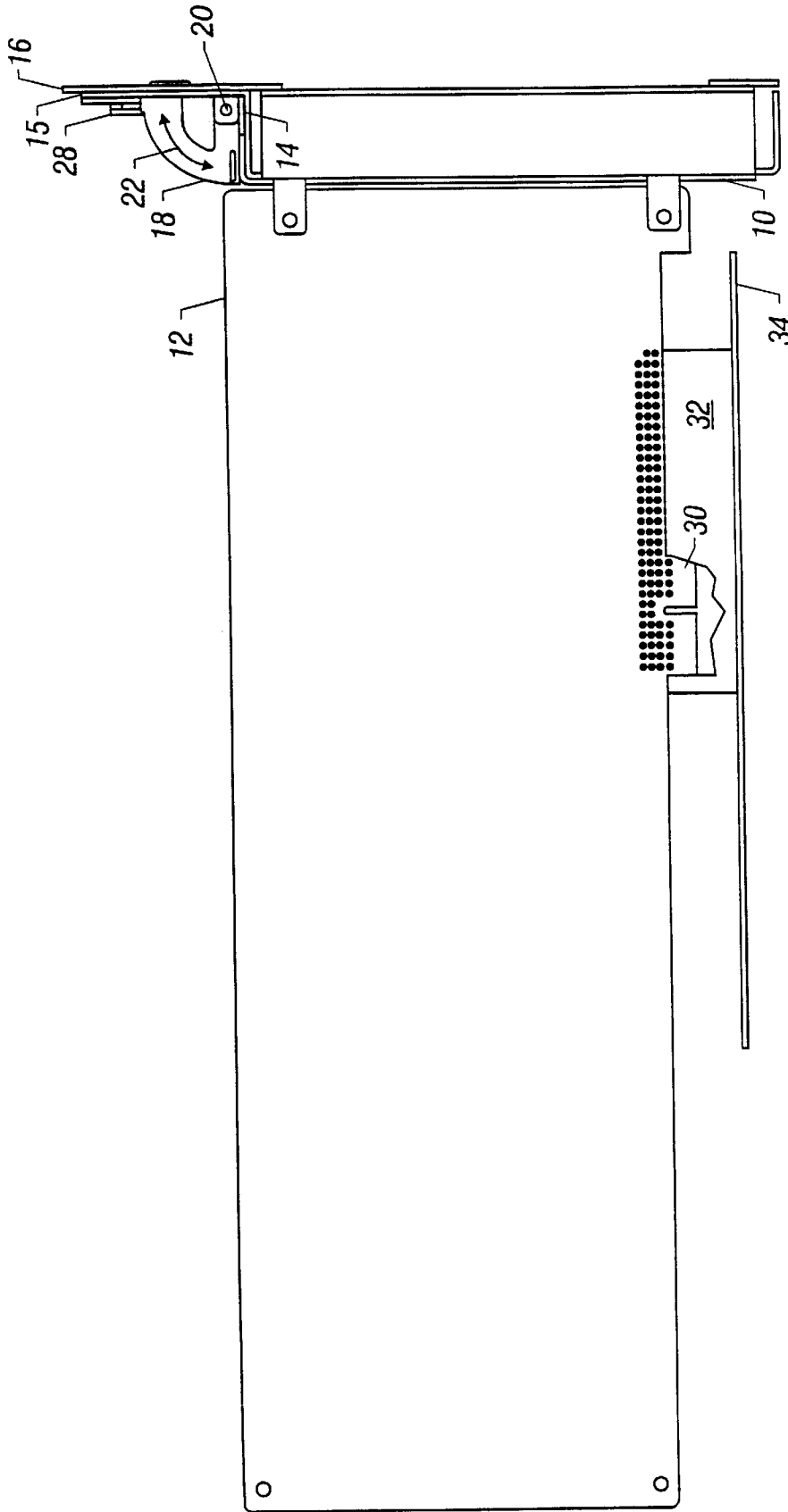


Figure 1

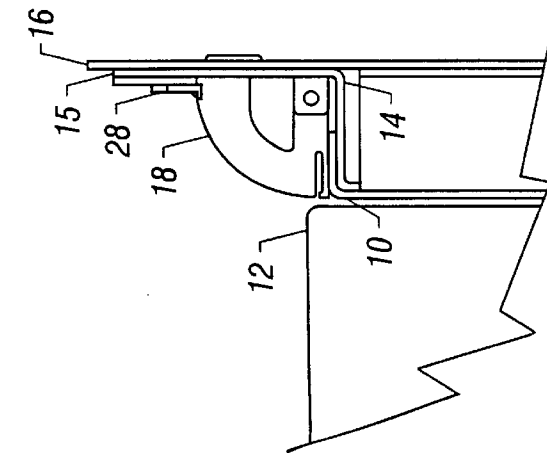
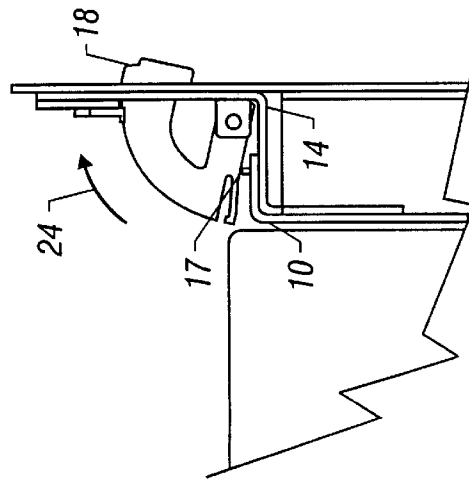
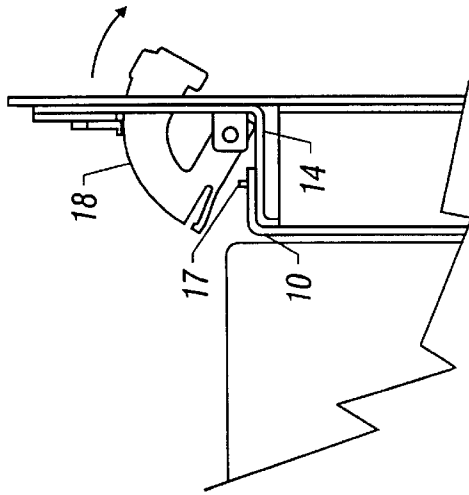


Figure 2A

Figure 2B

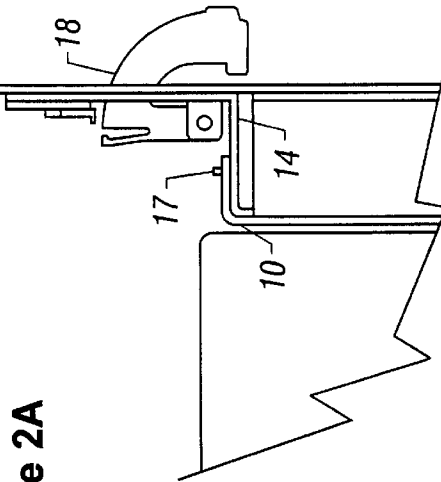


Figure 2C

Figure 2D

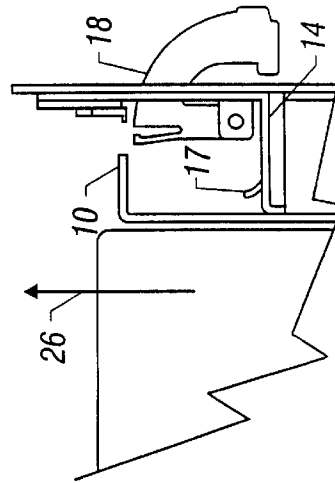


Figure 2E

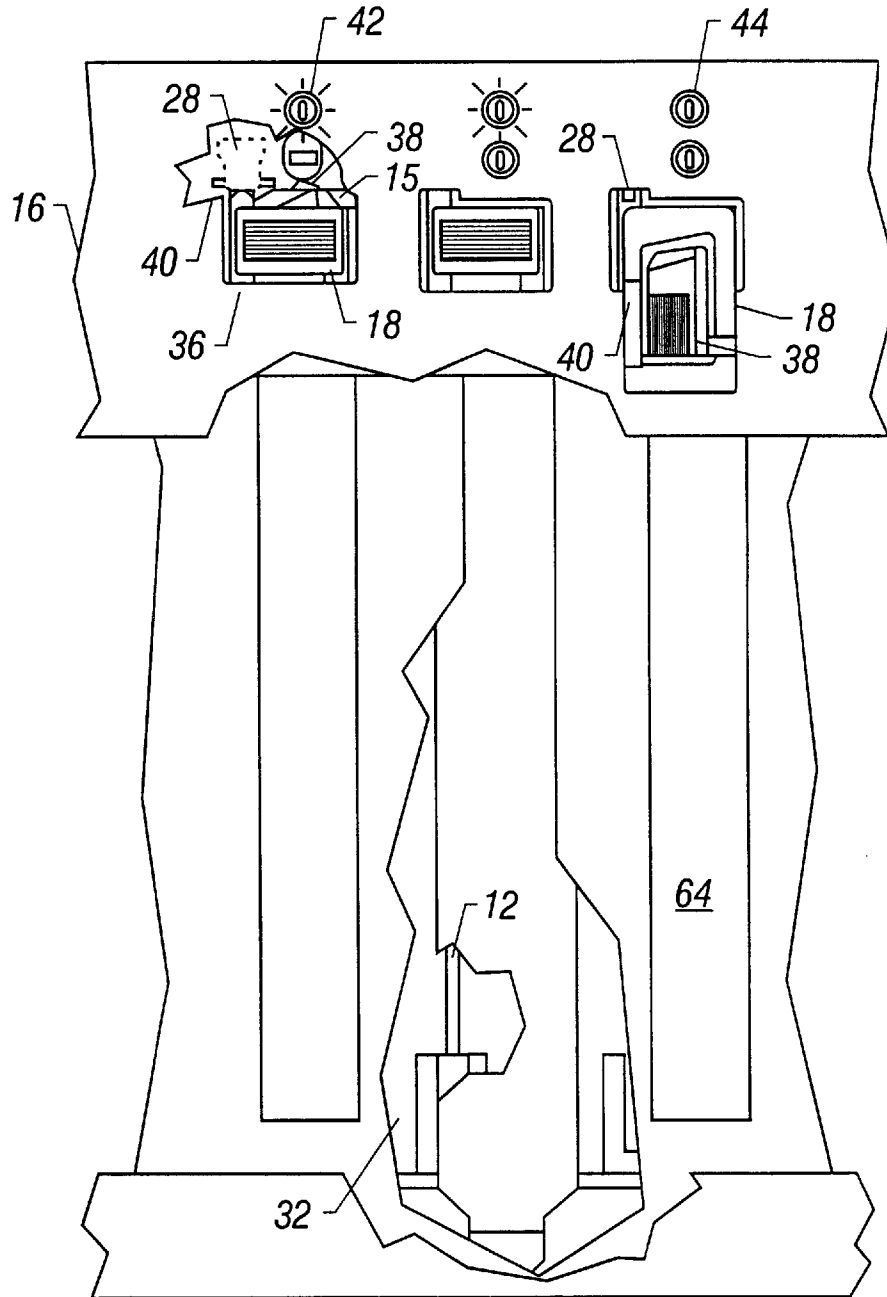


Figure 3

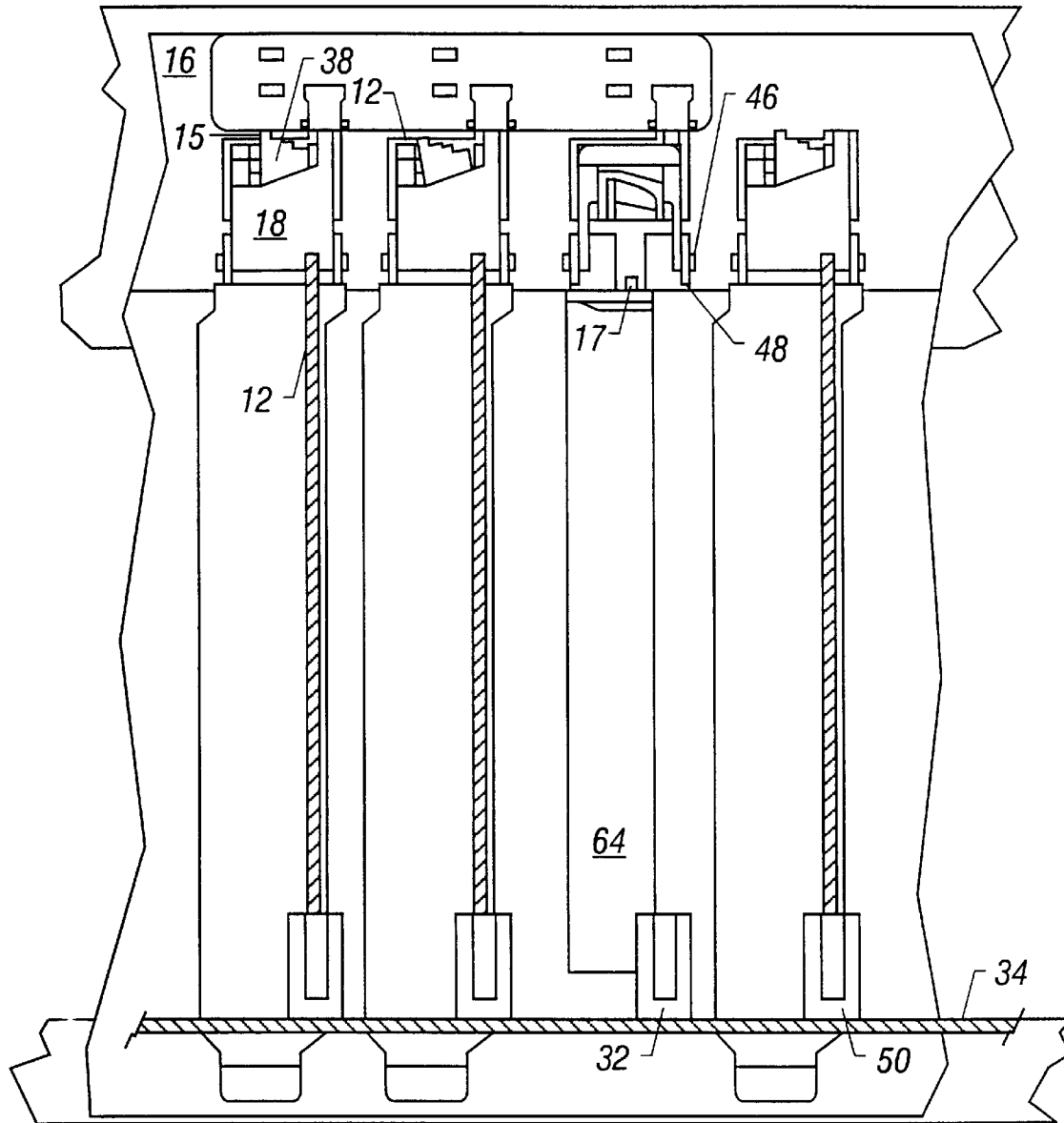


Figure 4

Explore Litigation Insights

Docket Alarm provides insights to develop a more informed litigation strategy and the peace of mind of knowing you're on top of things.

Real-Time Litigation Alerts



Keep your litigation team up-to-date with **real-time alerts** and advanced team management tools built for the enterprise, all while greatly reducing PACER spend.

Our comprehensive service means we can handle Federal, State, and Administrative courts across the country.

Advanced Docket Research



With over 230 million records, Docket Alarm's cloud-native docket research platform finds what other services can't. Coverage includes Federal, State, plus PTAB, TTAB, ITC and NLRB decisions, all in one place.

Identify arguments that have been successful in the past with full text, pinpoint searching. Link to case law cited within any court document via Fastcase.

Analytics At Your Fingertips



Learn what happened the last time a particular judge, opposing counsel or company faced cases similar to yours.

Advanced out-of-the-box PTAB and TTAB analytics are always at your fingertips.

API

Docket Alarm offers a powerful API (application programming interface) to developers that want to integrate case filings into their apps.

LAW FIRMS

Build custom dashboards for your attorneys and clients with live data direct from the court.

Automate many repetitive legal tasks like conflict checks, document management, and marketing.

FINANCIAL INSTITUTIONS

Litigation and bankruptcy checks for companies and debtors.

E-DISCOVERY AND LEGAL VENDORS

Sync your system to PACER to automate legal marketing.