

(12) **United States Patent**  
**Chiu et al.**

(10) **Patent No.:** **US 6,181,336 B1**  
 (45) **Date of Patent:** **\*Jan. 30, 2001**

(54) **DATABASE-INDEPENDENT, SCALABLE, OBJECT-ORIENTED ARCHITECTURE AND API FOR MANAGING DIGITAL MULTIMEDIA ASSETS**

Aronson "HTML3 Manual of Style" pp. 112-123, 1995.\*

\* cited by examiner

(75) Inventors: **Sheng-Yang Chiu**, Palo Alto; **Sathis N. Menon**, Sunnyvale; **Jeffrey D. Hollar**, Livermore, all of CA (US)

*Primary Examiner*—Almis R. Jankus  
 (74) *Attorney, Agent, or Firm*—Sterne, Kessler, Goldstein & Fox, p.l.l.c.

(73) Assignee: **Silicon Graphics, Inc.**, Mountain View, CA (US)

(57) **ABSTRACT**

(\*) Notice: This patent issued on a continued prosecution application filed under 37 CFR 1.53(d), and is subject to the twenty year patent term provisions of 35 U.S.C. 154(a)(2).

A system is described for providing an integrated, efficient and consistent production environment for the shared development of multimedia productions. Examples of multimedia productions include feature animation films, computerized animation films, interactive video games, interactive movies, and other types of entertainment and/or educational multimedia works. The development of such multimedia products typically involve heterogenous and diverse forms of multimedia data. Further, the production tools and equipment that are used to create and edit such diverse multimedia data are in and of themselves diverse and often incompatible with each other. The incompatibility between such development tools can be seen in terms of their methods of operation, operating environments, and the types and/or formats of data on which they operate upon. Disclosed herein, is a complete solution that provides a consistent and integrated multimedia production environment in the form of common utilities, methods and services. The common utilities, methods and services disclosed herein, are used to integrate the diverse world of multimedia productions. By using the common utilities, methods and services provided, diverse multimedia production tools can access, store, and share data in a multiple user production environment in a consistent, safe, efficient and predictable fashion.

Under 35 U.S.C. 154(b), the term of this patent shall be extended for 0 days.

(21) Appl. No.: **08/644,686**

(22) Filed: **May 31, 1996**

(51) **Int. Cl.<sup>7</sup>** ..... **G06T 1/00**

(52) **U.S. Cl.** ..... **345/329**

(58) **Field of Search** ..... 345/329-332,  
 345/352, 353, 355-357

(56) **References Cited**

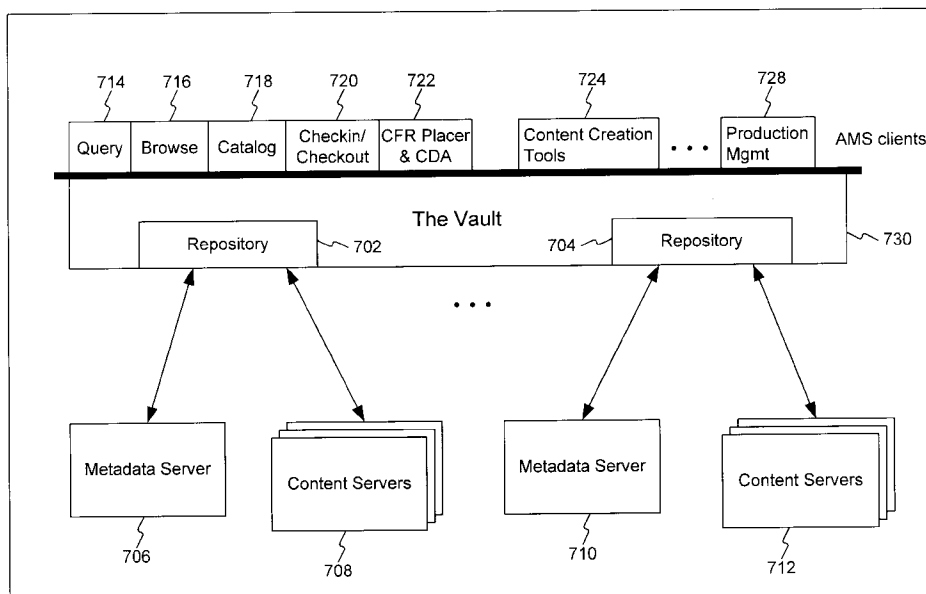
**U.S. PATENT DOCUMENTS**

5,091,849 2/1992 Davis et al. .... 395/100

**OTHER PUBLICATIONS**

Colton, M., "Multimedia Asset Management White Paper," About Informix White Papers, Informix, actual publication date unknown, estimated 1992-1993.

**19 Claims, 11 Drawing Sheets**



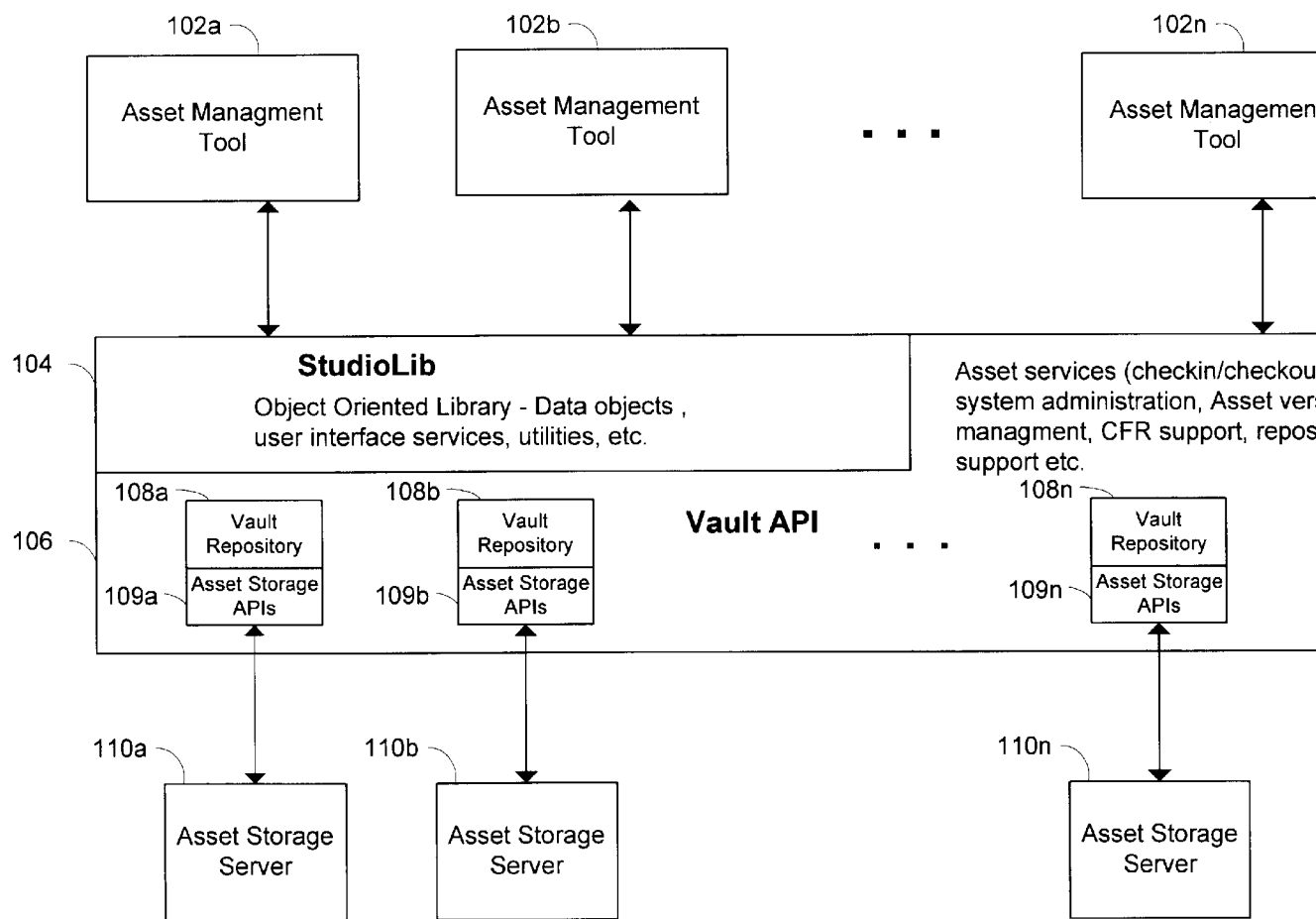


FIG. 1

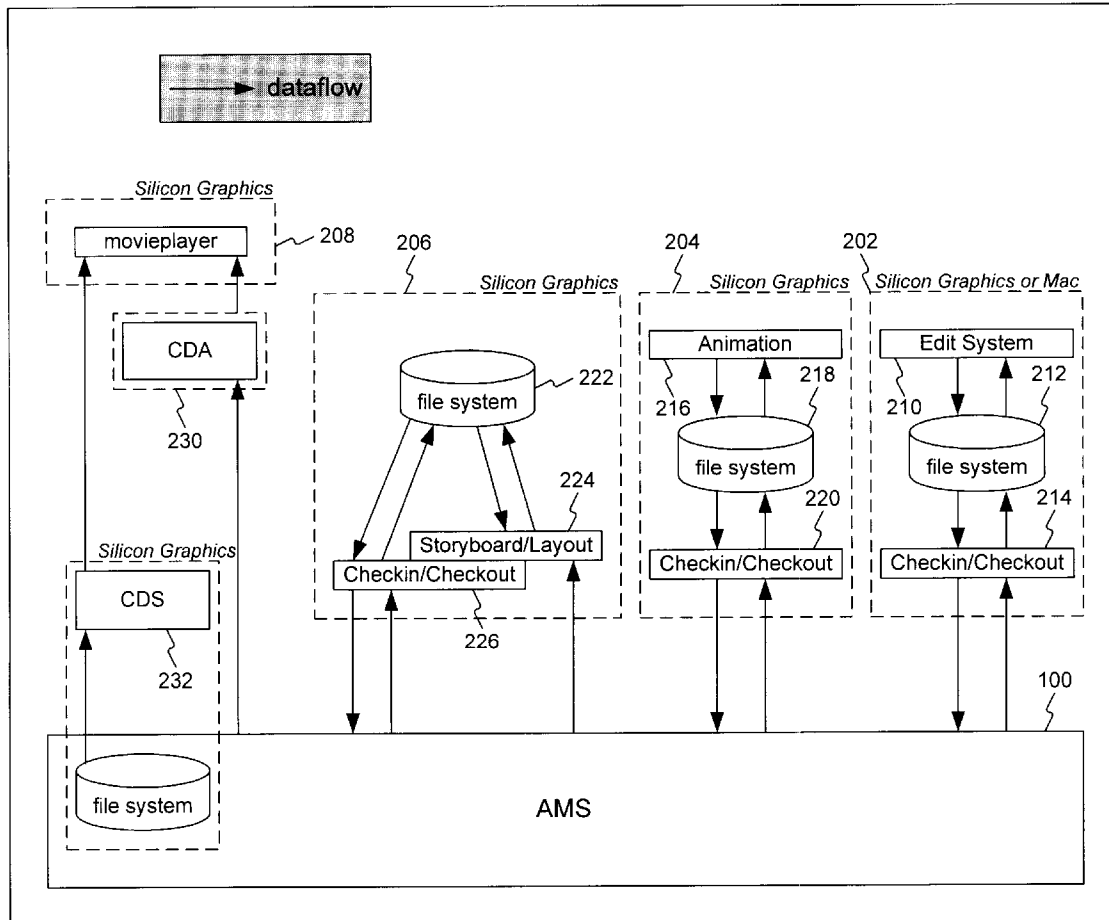


FIG. 2

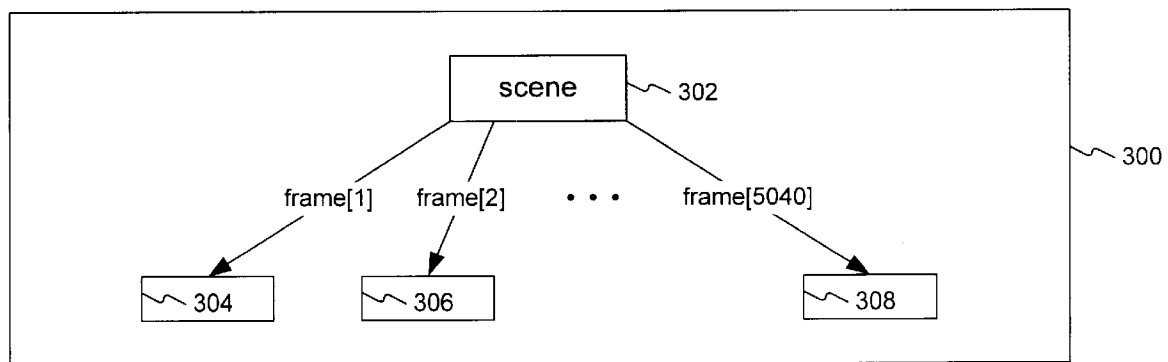


FIG. 3

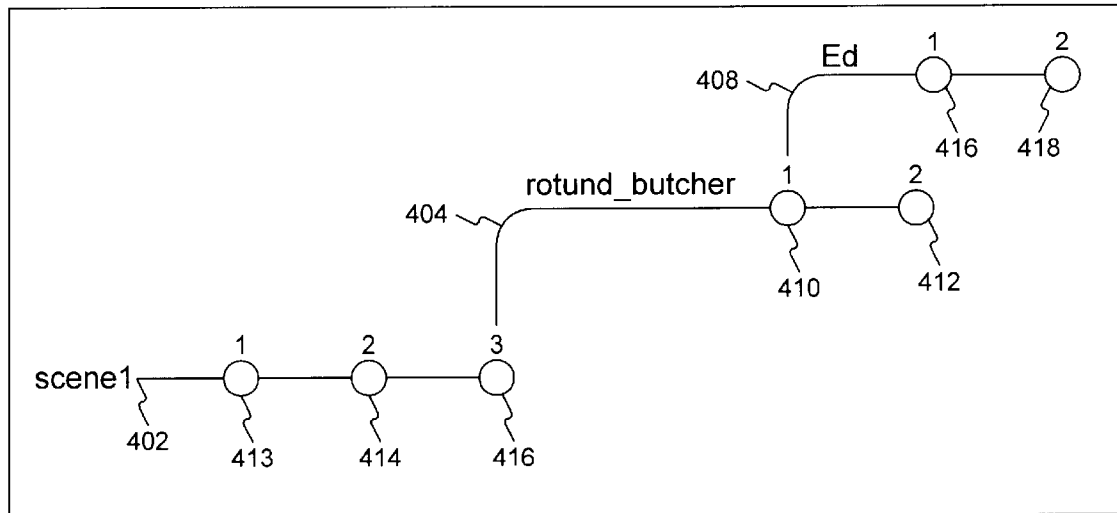


FIG. 4

# Explore Litigation Insights

Docket Alarm provides insights to develop a more informed litigation strategy and the peace of mind of knowing you're on top of things.

## Real-Time Litigation Alerts



Keep your litigation team up-to-date with **real-time alerts** and advanced team management tools built for the enterprise, all while greatly reducing PACER spend.

Our comprehensive service means we can handle Federal, State, and Administrative courts across the country.

## Advanced Docket Research



With over 230 million records, Docket Alarm's cloud-native docket research platform finds what other services can't. Coverage includes Federal, State, plus PTAB, TTAB, ITC and NLRB decisions, all in one place.

Identify arguments that have been successful in the past with full text, pinpoint searching. Link to case law cited within any court document via Fastcase.

## Analytics At Your Fingertips



Learn what happened the last time a particular judge, opposing counsel or company faced cases similar to yours.

Advanced out-of-the-box PTAB and TTAB analytics are always at your fingertips.

## API

Docket Alarm offers a powerful API (application programming interface) to developers that want to integrate case filings into their apps.

## LAW FIRMS

Build custom dashboards for your attorneys and clients with live data direct from the court.

Automate many repetitive legal tasks like conflict checks, document management, and marketing.

## FINANCIAL INSTITUTIONS

Litigation and bankruptcy checks for companies and debtors.

## E-DISCOVERY AND LEGAL VENDORS

Sync your system to PACER to automate legal marketing.