

- [54] **METHOD AND APPARATUS FOR CATALOGUING MULTIMEDIA DATA**
- [75] Inventor: **Samuel Gustman**, Santa Monica, Calif.
- [73] Assignee: **Survivors of the Shoah Visual History Foundation**, Los Angeles, Calif.
- [21] Appl. No.: **680,504**
- [22] Filed: **Jul. 8, 1996**
- [51] Int. Cl.⁶ **G06F 17/30**
- [52] U.S. Cl. **707/102; 707/104**
- [58] Field of Search 395/60, 61, 62; 707/102, 104

5,414,644	5/1995	Seaman et al.	395/551.01
5,428,774	6/1995	Takahashi et al.	395/612
5,461,611	10/1995	Drake, Jr. et al.	370/420
5,493,677	2/1996	Balogh et al.	395/615
5,515,490	5/1996	Buchanan et al.	345/302
5,608,900	3/1997	Dockter et al.	395/613
5,615,112	3/1997	Sheng et al.	395/615
5,617,119	4/1997	Briggs et al.	395/611
5,630,121	5/1997	Braden-Harder et al.	395/604
5,630,125	5/1997	Zellweger	395/614
5,682,330	10/1997	Seaman et al.	364/551.01
5,724,605	3/1998	Wissner	395/806

Primary Examiner—Wayne Amsbury
Attorney, Agent, or Firm—Hecker & Harriman

[57] **ABSTRACT**

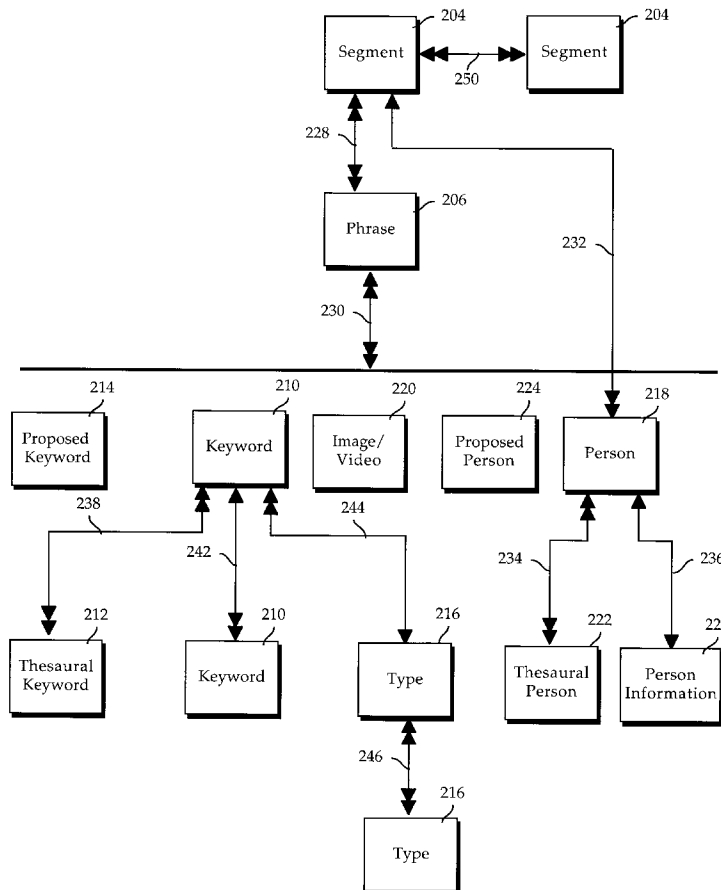
The invention catalogues data such as multimedia data. A catalogue is a collection of one or more catalogue elements. An index is used to access a catalogue. An element of a catalogue has one or more attributes. An attribute provides information that can be used to search for, answer questions about, and navigate through a catalogue. An attribute of a catalogue element can be an element that has attributes. A catalogue element attribute that is an element is referred to as an attribute element. Attribute elements and attributes are used to build an index that can be used to facilitate catalogue access. Within a catalogue, smaller catalogues can be created by, for example, querying and user designation.

29 Claims, 34 Drawing Sheets

[56] **References Cited**

U.S. PATENT DOCUMENTS

5,119,474	6/1992	Beitel et al.	395/807
5,121,470	6/1992	Trautman	395/140
5,123,088	6/1992	Kasahara et al.	395/357
5,210,868	5/1993	Shimada et al.	395/615
5,241,671	8/1993	Reed et al.	395/615
5,274,758	12/1993	Beitel et al.	395/807
5,278,946	1/1994	Shimada et al.	395/62
5,280,573	1/1994	Kuga et al.	395/338
5,303,296	4/1994	Zucker	379/67
5,404,506	4/1995	Fujisawa et al.	395/604
5,408,655	4/1995	Oren et al.	395/601



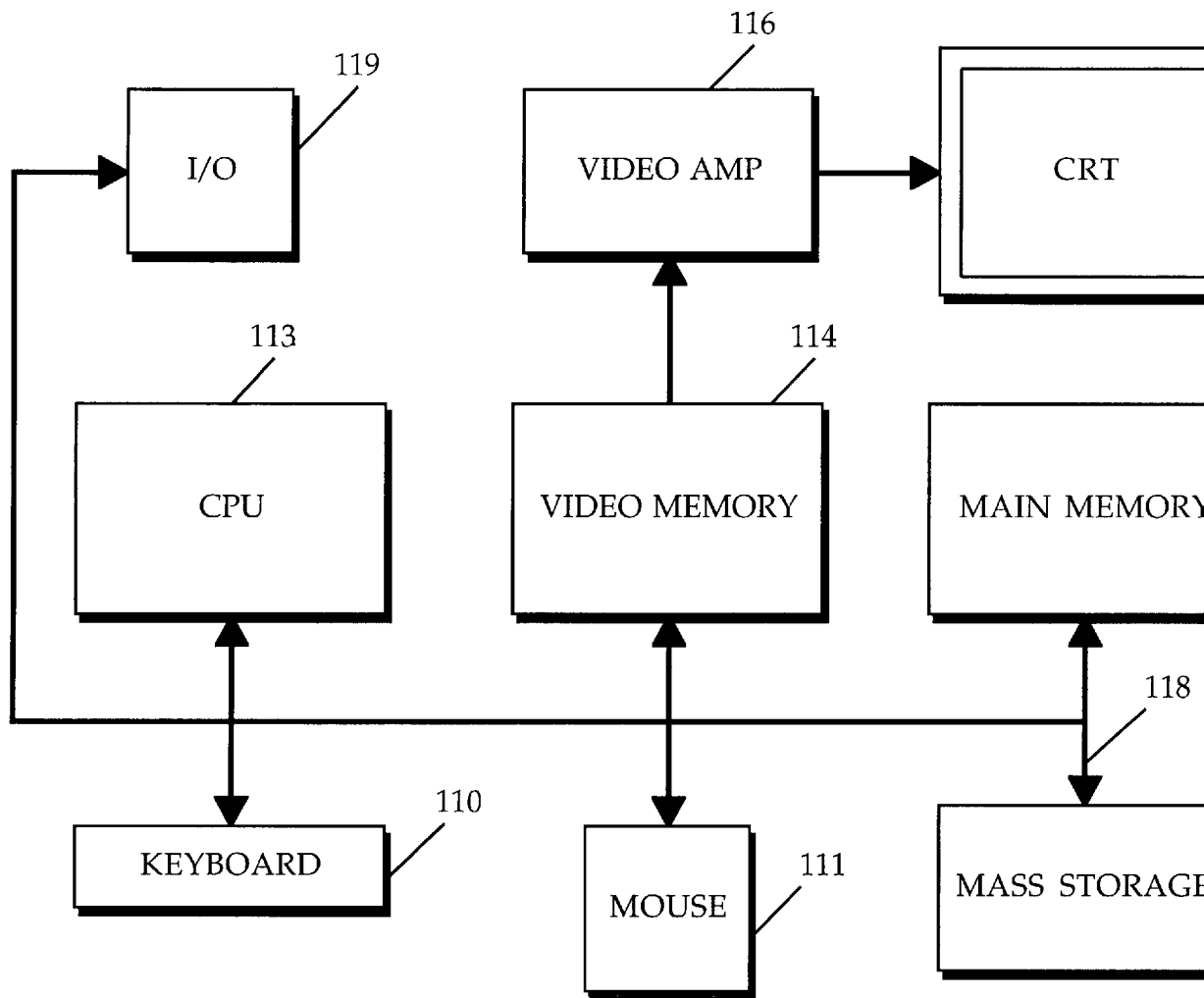


Figure 1

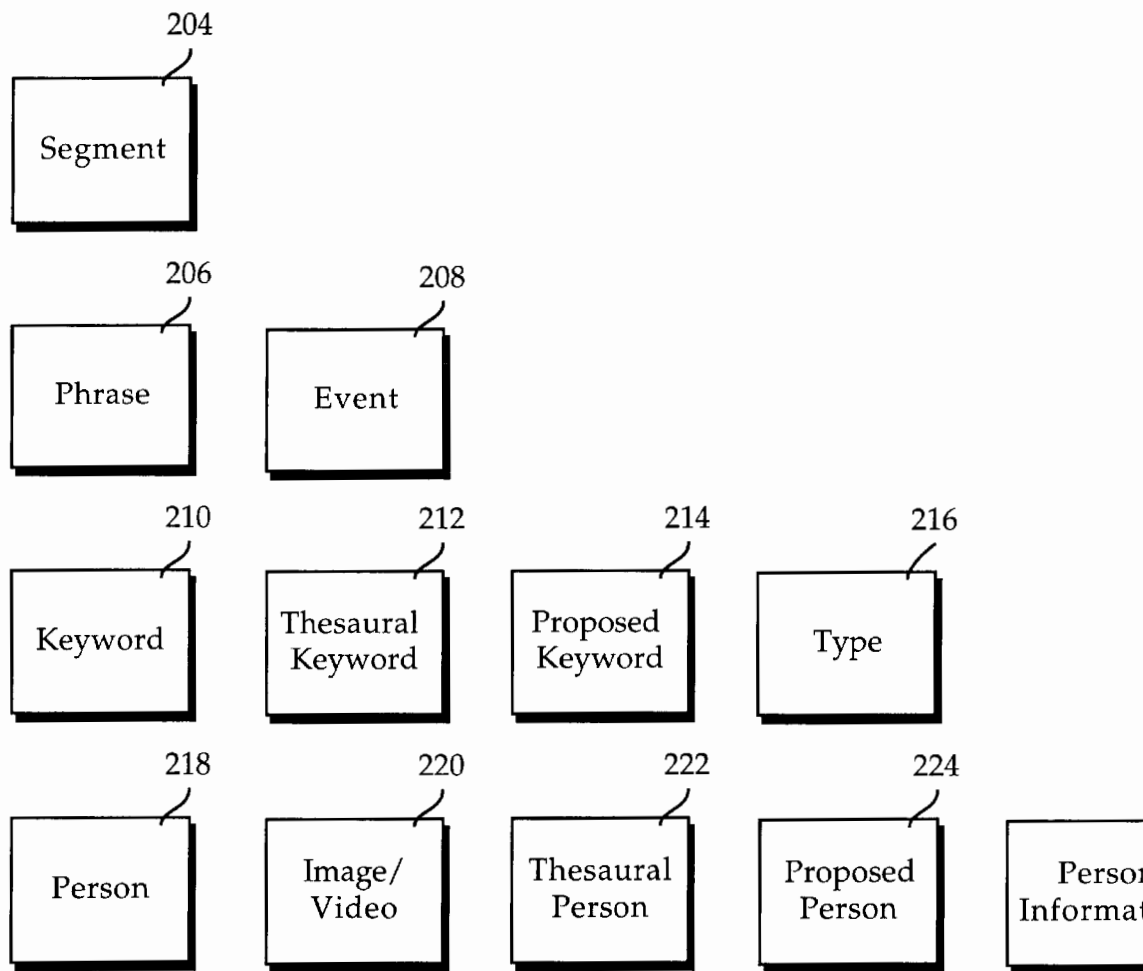


Figure 2A

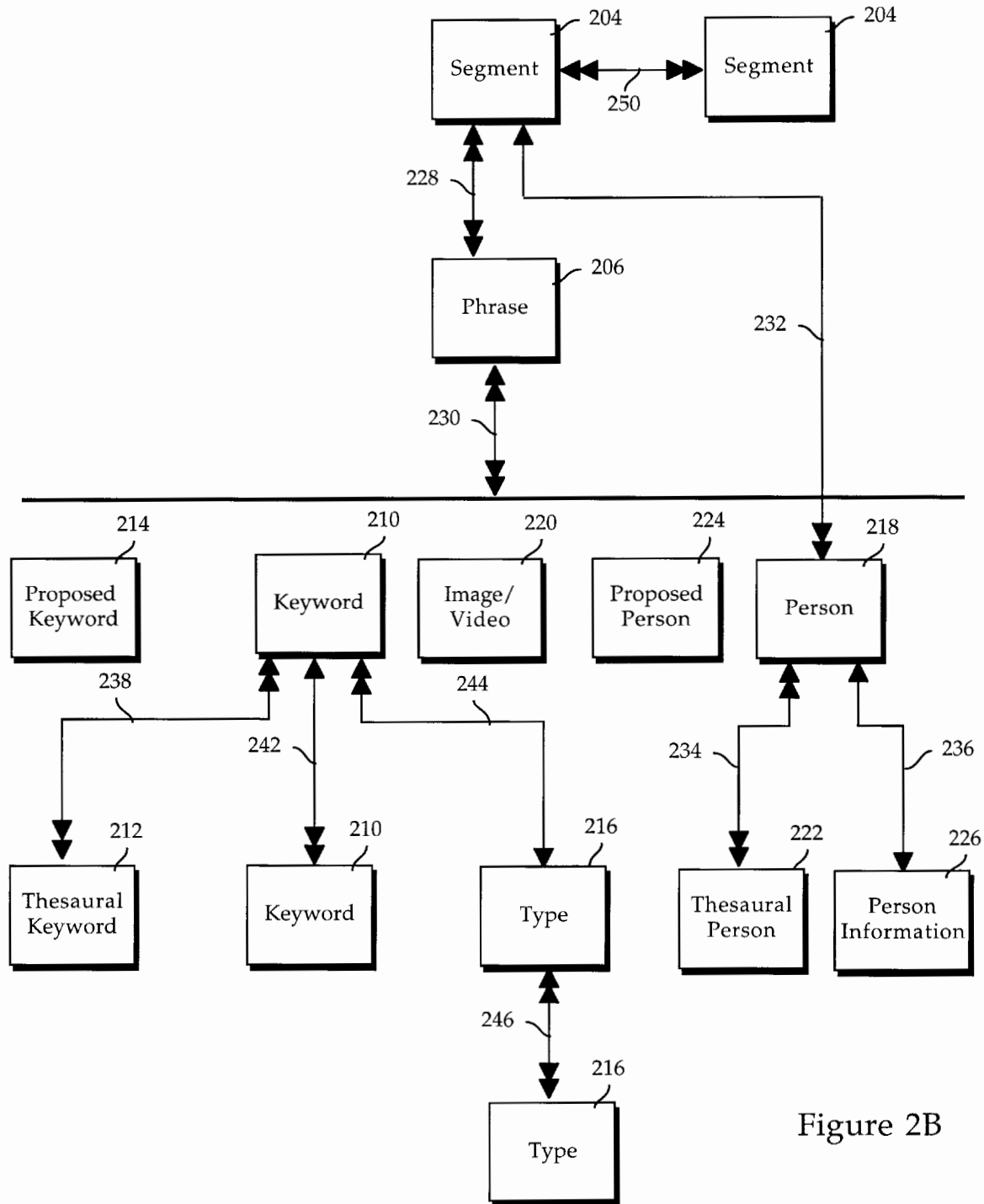
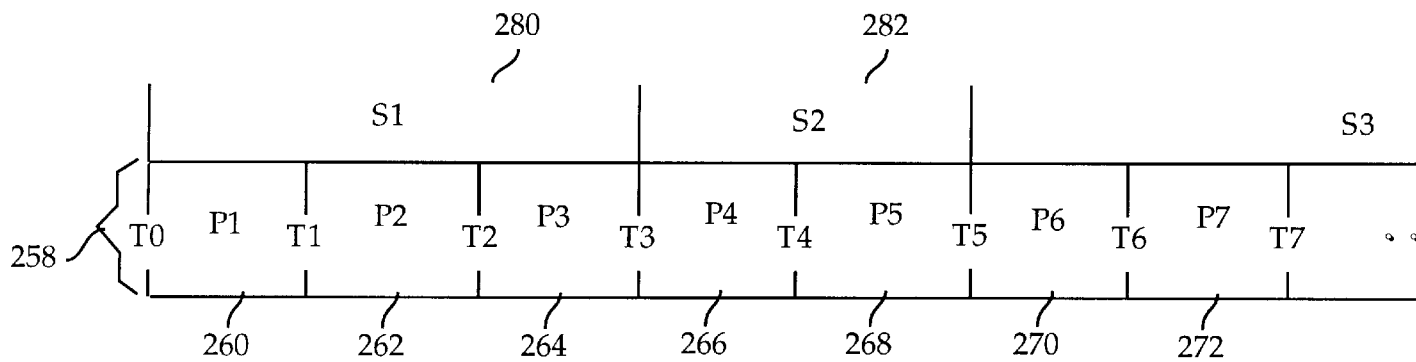


Figure 2B



$$\text{Chapter Segment} = \begin{cases} P1 + P2 + P3 \\ P4 + P5 \\ P6 + P7 + \dots + Pn \end{cases}$$

$$\text{Testimony Segment} = S1 + S2 + S3$$

$$\text{General Segment} = P1 + P4 + P5 + P6 + Pn$$

Figure 2C

Explore Litigation Insights

Docket Alarm provides insights to develop a more informed litigation strategy and the peace of mind of knowing you're on top of things.

Real-Time Litigation Alerts



Keep your litigation team up-to-date with **real-time alerts** and advanced team management tools built for the enterprise, all while greatly reducing PACER spend.

Our comprehensive service means we can handle Federal, State, and Administrative courts across the country.

Advanced Docket Research



With over 230 million records, Docket Alarm's cloud-native docket research platform finds what other services can't. Coverage includes Federal, State, plus PTAB, TTAB, ITC and NLRB decisions, all in one place.

Identify arguments that have been successful in the past with full text, pinpoint searching. Link to case law cited within any court document via Fastcase.

Analytics At Your Fingertips



Learn what happened the last time a particular judge, opposing counsel or company faced cases similar to yours.

Advanced out-of-the-box PTAB and TTAB analytics are always at your fingertips.

API

Docket Alarm offers a powerful API (application programming interface) to developers that want to integrate case filings into their apps.

LAW FIRMS

Build custom dashboards for your attorneys and clients with live data direct from the court.

Automate many repetitive legal tasks like conflict checks, document management, and marketing.

FINANCIAL INSTITUTIONS

Litigation and bankruptcy checks for companies and debtors.

E-DISCOVERY AND LEGAL VENDORS

Sync your system to PACER to automate legal marketing.