



US00RE45542E

(19) **United States**
(12) **Reissued Patent**
Mylly

(10) **Patent Number:** **US RE45,542 E**
(45) **Date of Reissued Patent:** **Jun. 2, 2015**

(54) **METHOD AND A SYSTEM FOR DETERMINING THE POWER CONSUMPTION IN CONNECTION WITH AN ELECTRONIC DEVICE, AND AN ELECTRONIC DEVICE**

USPC 713/300, 320, 322; 710/8, 301
See application file for complete search history.

(56) **References Cited**

U.S. PATENT DOCUMENTS

4,841,440 A 6/1989 Yonezu et al.
5,483,656 A 1/1996 Oprescu et al.

(Continued)

FOREIGN PATENT DOCUMENTS

EP 1 117 026 A2 7/2001
GB 2 235 797 A 3/1991

(Continued)

OTHER PUBLICATIONS

USB Specification Revision, published Apr. 27, 2000; pp. 171-174.

(Continued)

Primary Examiner — Ji H Bae

(74) *Attorney, Agent, or Firm* — Sterne, Kessler, Goldstein & Fox P.L.L.C.

(71) Applicant: **Memory Technologies LLC**, Las Vegas, NV (US)

(72) Inventor: **Kimmo Mylly**, Julkujärvi (FI)

(73) Assignee: **Memory Technologies LLC**, Las Vegas, NV (US)

(21) Appl. No.: **13/902,227**

(22) Filed: **May 24, 2013**

Related U.S. Patent Documents

Reissue of:

(64) Patent No.: **7,278,033**
Issued: **Oct. 2, 2007**
Appl. No.: **10/401,338**
Filed: **Mar. 26, 2003**

(30) **Foreign Application Priority Data**

Mar. 27, 2002 (FI) 20020594

(51) **Int. Cl.**
G06F 1/00 (2006.01)
G06F 1/26 (2006.01)

(Continued)

(52) **U.S. Cl.**
CPC **G06F 1/266** (2013.01); **G06F 13/10** (2013.01); **G06F 1/3225** (2013.01); **G06F 1/324** (2013.01);

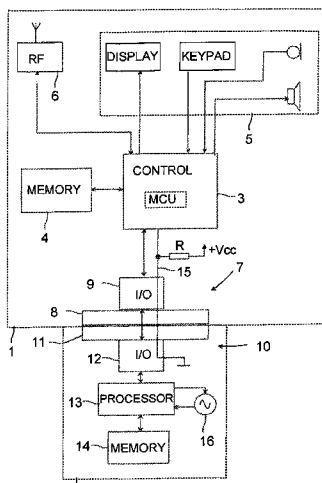
(Continued)

(58) **Field of Classification Search**
CPC G06F 1/26; G06F 1/3206; G06F 1/324; G06F 1/266; G06F 1/3275; G06F 1/3225; G06F 1/3253; G06F 13/10; G06F 13/38

(57) **ABSTRACT**

The present invention relates to a method and a system for determining the power consumption in an electronic device, to which a peripheral device is connected, to which the power is supplied from the electronic device. At least a first maximum value and a second maximum value, higher than the first maximum value, are determined for the power consumption. Signaling between the electronic device and the peripheral device sets a maximum value for the power consumption of the peripheral device which is between said first and second maximum values. The invention also relates to an electronic device and a peripheral device, in which the method is applied.

40 Claims, 4 Drawing Sheets



- (51) **Int. Cl.**
G06F 1/32 (2006.01)
G06F 3/00 (2006.01)
H05K 7/10 (2006.01)
G06F 13/38 (2006.01)
G06F 13/10 (2006.01)

WO WO 98/41987 A1 9/1998
 WO 0207494 1/2002
 WO WO 02/07494 A2 1/2002

OTHER PUBLICATIONS

- (52) **U.S. Cl.**
 CPC *G06F 1/3275* (2013.01); **G06F 1/3253**
 (2013.01); *G06F 1/26* (2013.01); **G06F 13/38**
 (2013.01); *G06F 1/3206* (2013.01)

English-Language Abstract for International Patent Publication No. 98/41987 A1, published Sep. 24, 1998; 1 page.
 Notice of Allowance mailed Jun. 13, 2007 for U.S. Appl. No. 10/401,338, filed Mar. 26, 2003; 12 pages.
 Non-Final Rejection mailed Sep. 22, 2005 for U.S. Appl. No. 10/401,338, filed Mar. 26, 2003; 10 pages.
 Non-Final Rejection mailed Jul. 14, 2006 for U.S. Appl. No. 10/401,338, filed Mar. 26, 2003; 8 pages.
 Final Rejection mailed Mar. 23, 2006 for U.S. Appl. No. 10/401,338, filed Mar. 26, 2003; 11 pages.
 Final Rejection mailed Dec. 27, 2006 for U.S. Appl. No. 10/401,338, filed Mar. 26, 2003; 8 pages.
 International Search Report directed to related International Patent Application No. PCT/FI03/00233, mailed Jun. 27, 2003; 5 pages.
 International Preliminary Report on Patentability directed to related International Patent Application No. PCT/FI03/00233, mailed Jun. 24, 2003; 7 pages.
 European Search Report directed to related European Patent Application No. 03 708 304.5-1527, mailed Nov. 24, 2006; 6 pages.
 European Search Report directed to related European Patent Application No. 03 708 304.5-1527, mailed Dec. 20, 2007; 5 pages.
 European Search Report directed to related European Patent Application No. 03 708 304.5-1527, mailed Mar. 5, 2009; 4 pages.
 SD Card Association, *SD Specifications Part 1 Physical Layer Simplified Specification Version 4.10*, https://www.sdcard.org/downloads/pls/simplified_specs/part1_410.pdf, Published Jan. 22, 2013; pp. 1-186.
 English-Language Abstract for European Patent Publication No. EP 1 117 026 A2, published Jul. 18, 2001; 2 pages.

(56) **References Cited**

U.S. PATENT DOCUMENTS

| | | | | |
|--------------|------|---------|-------------------|---------|
| 5,532,945 | A * | 7/1996 | Robinson | 713/321 |
| 5,606,704 | A | 2/1997 | Pierce et al. | |
| 5,613,130 | A | 3/1997 | Teng et al. | |
| 5,737,616 | A | 4/1998 | Watanabe | |
| 5,752,050 | A | 5/1998 | Hernandez et al. | |
| 5,758,108 | A | 5/1998 | Nakamura | |
| 5,758,171 | A | 5/1998 | Ramamurthy et al. | |
| 5,768,147 | A | 6/1998 | Young | |
| 5,884,086 | A | 3/1999 | Amoni et al. | |
| 5,892,729 | A * | 4/1999 | Holder, Jr. | 365/233 |
| 5,964,879 | A * | 10/1999 | Dunstan et al. | 713/340 |
| 5,996,083 | A * | 11/1999 | Gupta et al. | 713/322 |
| 6,092,209 | A | 7/2000 | Holzhammer et al. | |
| 6,178,514 | B1 | 1/2001 | Wood | |
| 6,279,114 | B1 | 8/2001 | Toombs et al. | |
| 6,477,388 | B1 * | 11/2002 | Schmutz | 455/522 |
| 6,697,883 | B1 | 2/2004 | Jinnouchi | |
| 6,785,830 | B1 * | 8/2004 | McKeen et al. | 713/320 |
| 6,859,882 | B2 * | 2/2005 | Fung | 713/300 |
| 6,901,457 | B1 | 5/2005 | Toombs et al. | |
| 2004/0078498 | A1 * | 4/2004 | Saotome | 710/8 |

FOREIGN PATENT DOCUMENTS

| | | |
|----|---------|--------|
| GB | 2235797 | 3/1991 |
| WO | 9841987 | 9/1998 |

* cited by examiner

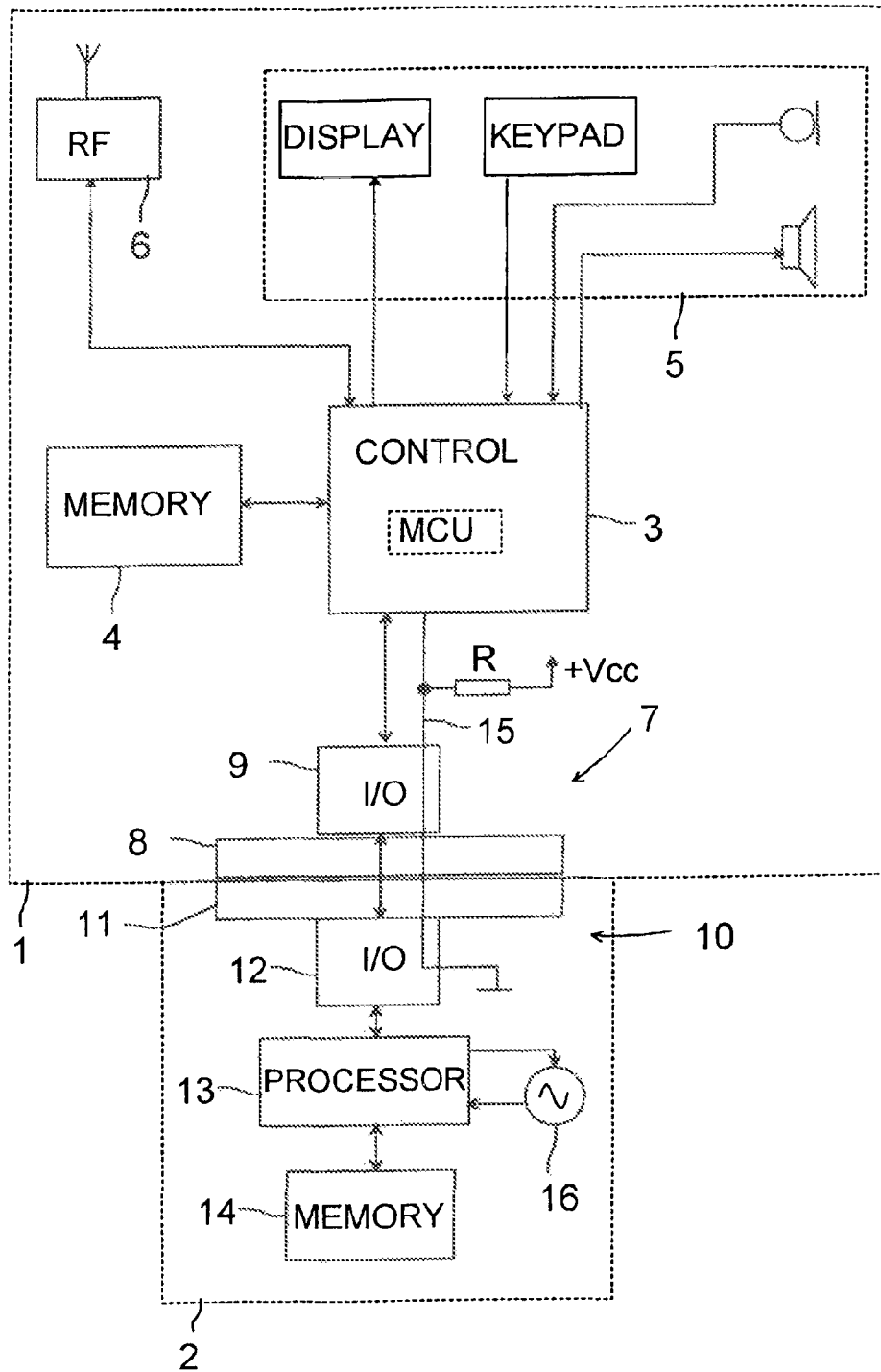


Fig 1

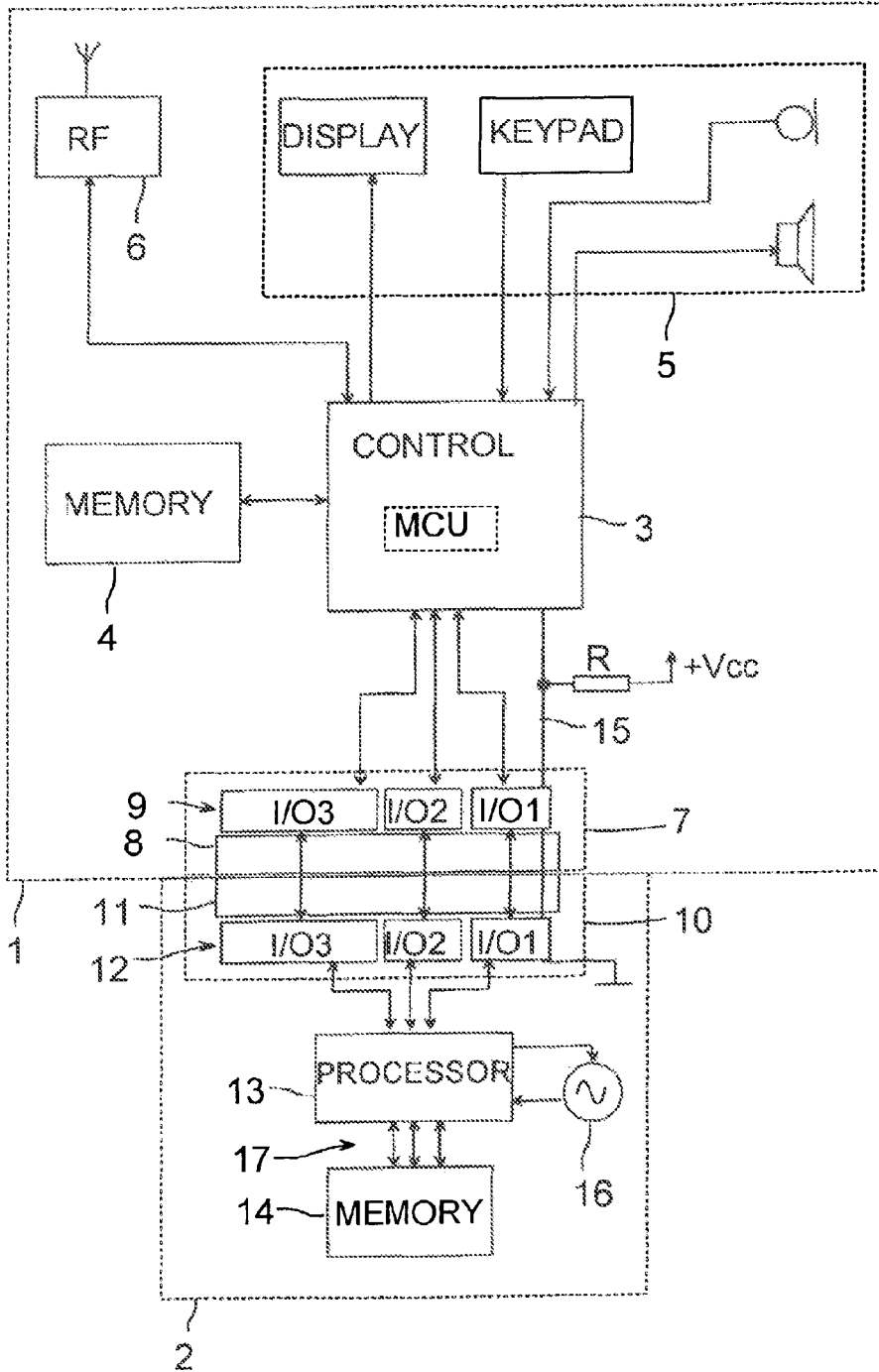


Fig 2

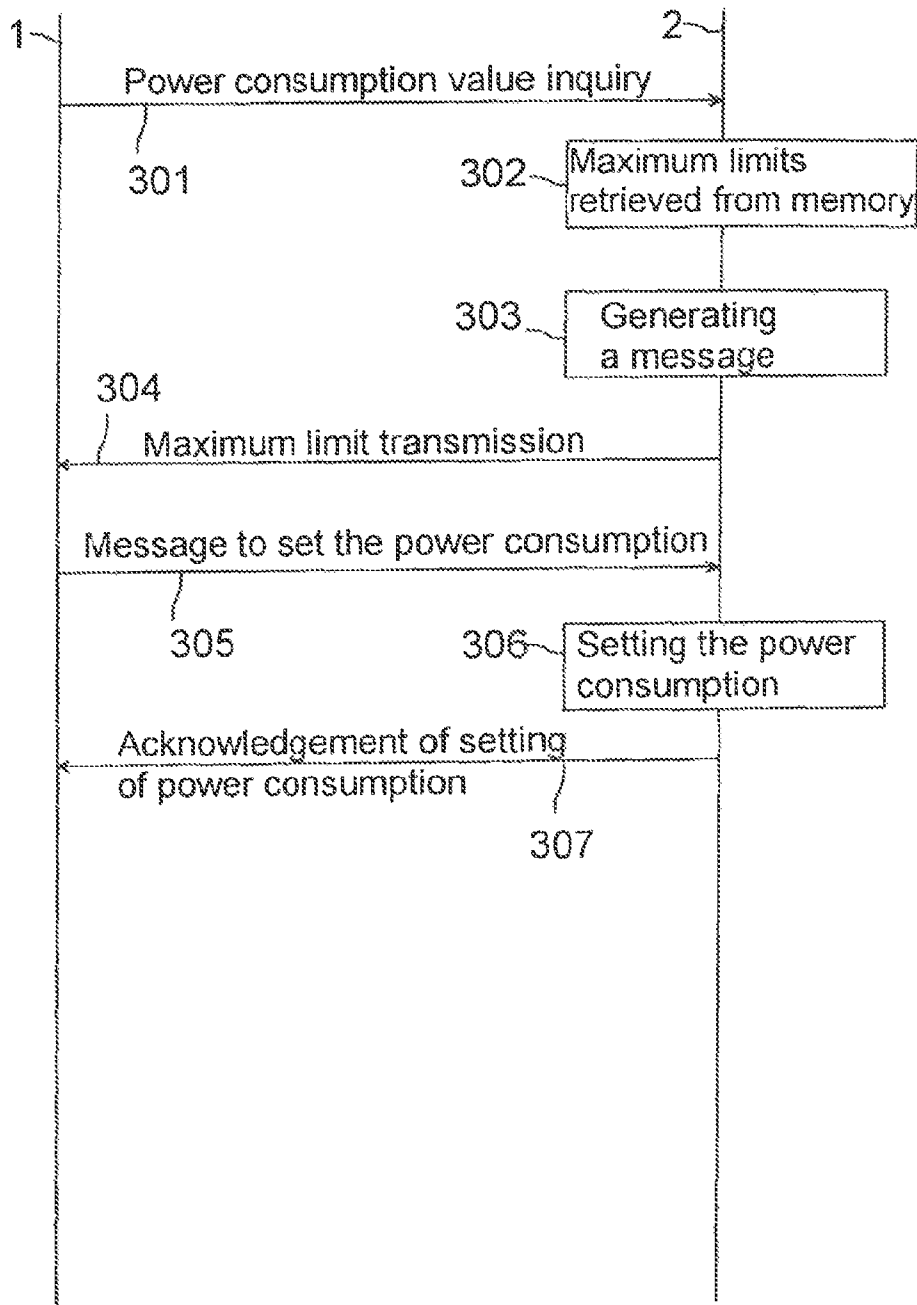


Fig 3

Explore Litigation Insights

Docket Alarm provides insights to develop a more informed litigation strategy and the peace of mind of knowing you're on top of things.

Real-Time Litigation Alerts



Keep your litigation team up-to-date with **real-time alerts** and advanced team management tools built for the enterprise, all while greatly reducing PACER spend.

Our comprehensive service means we can handle Federal, State, and Administrative courts across the country.

Advanced Docket Research



With over 230 million records, Docket Alarm's cloud-native docket research platform finds what other services can't. Coverage includes Federal, State, plus PTAB, TTAB, ITC and NLRB decisions, all in one place.

Identify arguments that have been successful in the past with full text, pinpoint searching. Link to case law cited within any court document via Fastcase.

Analytics At Your Fingertips



Learn what happened the last time a particular judge, opposing counsel or company faced cases similar to yours.

Advanced out-of-the-box PTAB and TTAB analytics are always at your fingertips.

API

Docket Alarm offers a powerful API (application programming interface) to developers that want to integrate case filings into their apps.

LAW FIRMS

Build custom dashboards for your attorneys and clients with live data direct from the court.

Automate many repetitive legal tasks like conflict checks, document management, and marketing.

FINANCIAL INSTITUTIONS

Litigation and bankruptcy checks for companies and debtors.

E-DISCOVERY AND LEGAL VENDORS

Sync your system to PACER to automate legal marketing.