



US007278033B2

(12) **United States Patent**  
**Myly**

(10) **Patent No.:** **US 7,278,033 B2**  
(45) **Date of Patent:** **Oct. 2, 2007**

(54) **METHOD AND A SYSTEM FOR DETERMINING THE POWER CONSUMPTION IN CONNECTION WITH AN ELECTRONIC DEVICE, AND AN ELECTRONIC DEVICE**

5,532,945 A *	7/1996	Robinson .....	713/321
5,606,704 A	2/1997	Pierce et al.	
5,613,130 A	3/1997	Teng et al.	
5,737,616 A	4/1998	Watanabe	
5,758,108 A	5/1998	Nakamura	
5,758,171 A	5/1998	Ramamurthy et al.	
5,884,086 A	3/1999	Amoni et al.	
5,892,729 A *	4/1999	Holder, Jr. ....	365/233
5,996,083 A *	11/1999	Gupta et al. ....	713/322
6,178,514 B1	1/2001	Wood	
6,477,388 B1 *	11/2002	Schmutz .....	455/522
6,785,830 B1 *	8/2004	McKeen et al. ....	713/320
6,859,882 B2 *	2/2005	Fung .....	713/300

(75) Inventor: **Kimmo Myly**, Tampere (FI)

(73) Assignee: **Nokia Corporation**, Espoo (FI)

(\* ) Notice: Subject to any disclaimer, the term of this patent is extended or adjusted under 35 U.S.C. 154(b) by 472 days.

(21) Appl. No.: **10/401,338**

GB	2235797	3/1991
WO	9841987	9/1998
WO	0207494	1/2002

(22) Filed: **Mar. 26, 2003**

(65) **Prior Publication Data**

US 2003/0188205 A1 Oct. 2, 2003

(30) **Foreign Application Priority Data**

Mar. 27, 2002 (FI) ..... 20020594

(51) **Int. Cl.**

**G06F 1/00** (2006.01)  
**G06F 1/26** (2006.01)  
**G06F 1/32** (2006.01)

(52) **U.S. Cl.** ..... **713/300; 713/320; 713/322**

(58) **Field of Classification Search** ..... **713/300, 713/320, 322**

See application file for complete search history.

(56) **References Cited**

**U.S. PATENT DOCUMENTS**

4,841,440 A 6/1989 Yonezu et al.

**FOREIGN PATENT DOCUMENTS**

\* cited by examiner

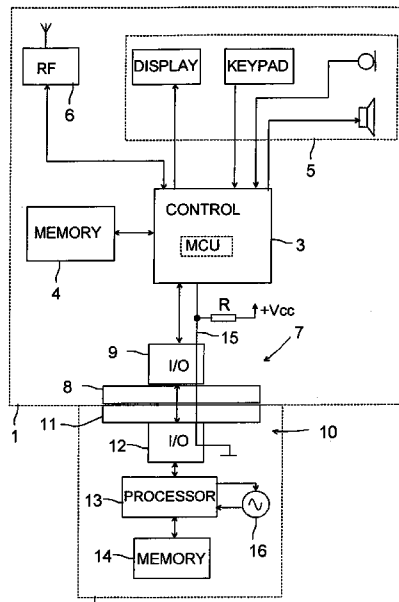
*Primary Examiner*—Chun Cao

*Assistant Examiner*—Ji H Bae

(57) **ABSTRACT**

The present invention relates to a method and a system for determining the power consumption in an electronic device, to which a peripheral device is connected, to which the power is supplied from the electronic device. At least a first maximum value and a second maximum value, higher than the first maximum value, are determined for the power consumption. Signaling between the electronic device and the peripheral device sets a maximum value for the power consumption of the peripheral device which is between said first and second maximum values. The invention also relates to an electronic device and a peripheral device, in which the method is applied.

**29 Claims, 4 Drawing Sheets**



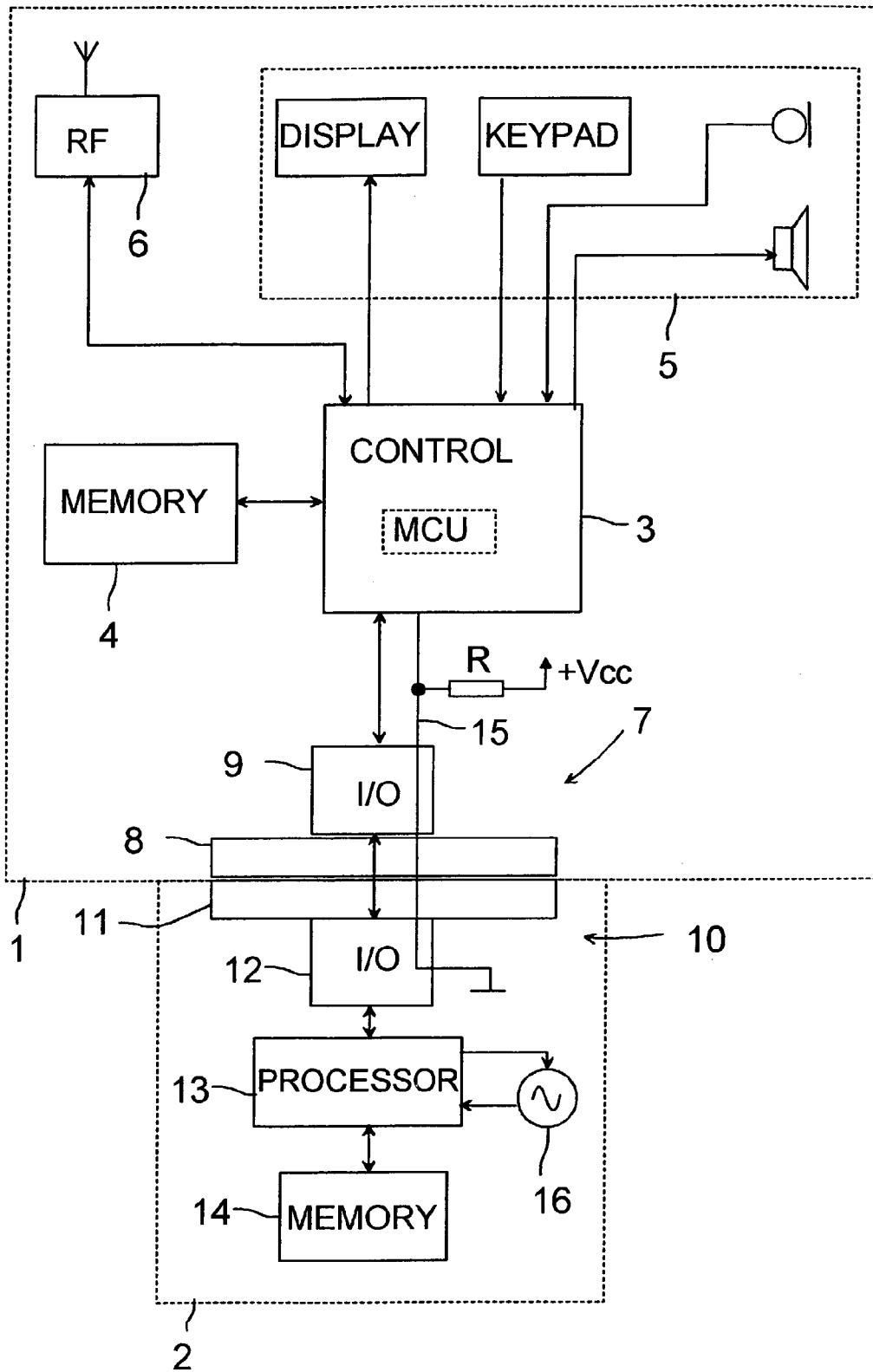


Fig 1

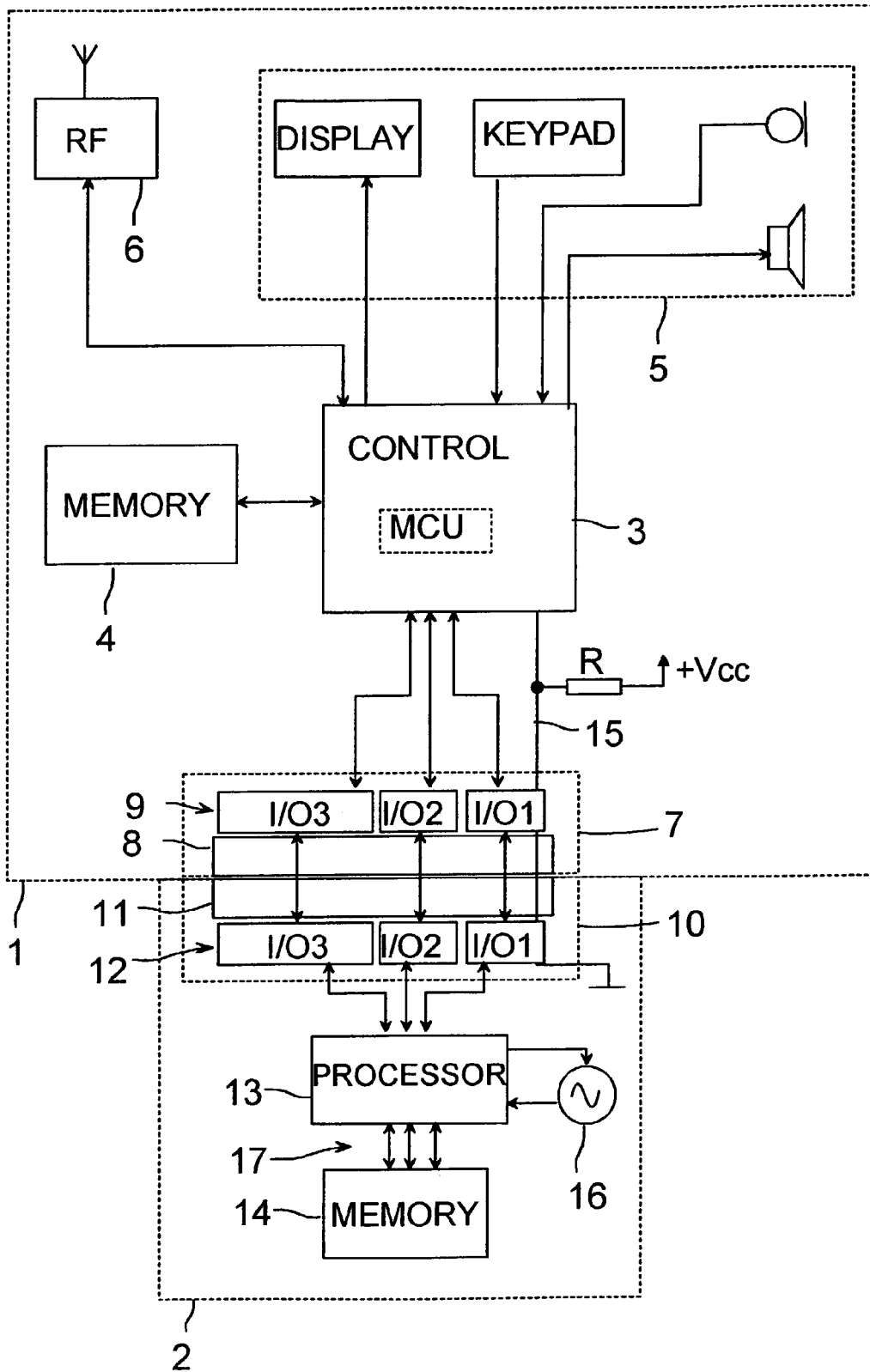


Fig 2

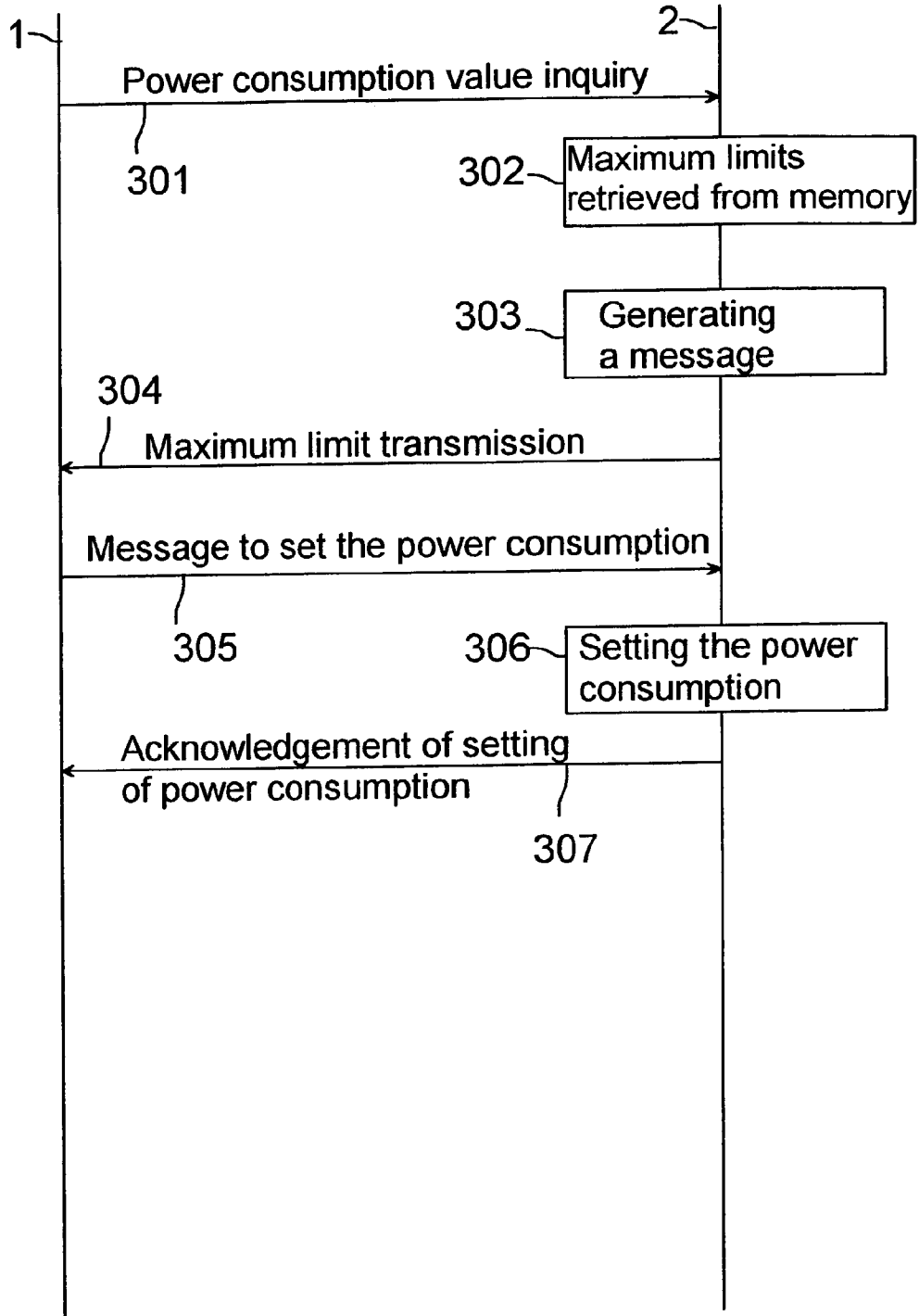


Fig 3

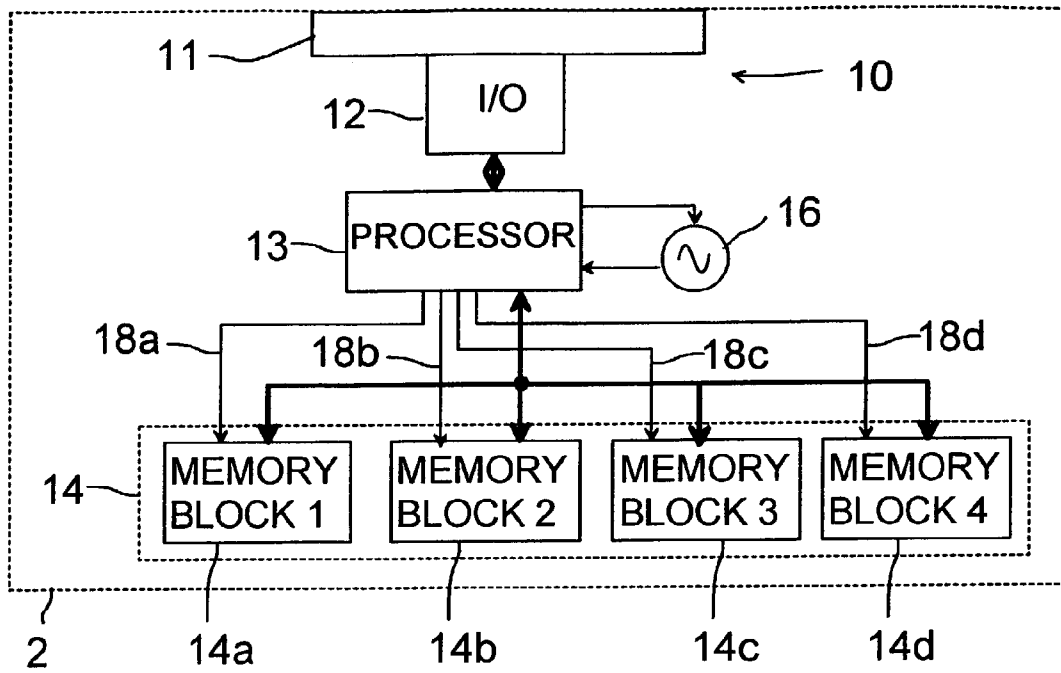


Fig 4

# Explore Litigation Insights

Docket Alarm provides insights to develop a more informed litigation strategy and the peace of mind of knowing you're on top of things.

## Real-Time Litigation Alerts



Keep your litigation team up-to-date with **real-time alerts** and advanced team management tools built for the enterprise, all while greatly reducing PACER spend.

Our comprehensive service means we can handle Federal, State, and Administrative courts across the country.

## Advanced Docket Research



With over 230 million records, Docket Alarm's cloud-native docket research platform finds what other services can't. Coverage includes Federal, State, plus PTAB, TTAB, ITC and NLRB decisions, all in one place.

Identify arguments that have been successful in the past with full text, pinpoint searching. Link to case law cited within any court document via Fastcase.

## Analytics At Your Fingertips



Learn what happened the last time a particular judge, opposing counsel or company faced cases similar to yours.

Advanced out-of-the-box PTAB and TTAB analytics are always at your fingertips.

## API

Docket Alarm offers a powerful API (application programming interface) to developers that want to integrate case filings into their apps.

## LAW FIRMS

Build custom dashboards for your attorneys and clients with live data direct from the court.

Automate many repetitive legal tasks like conflict checks, document management, and marketing.

## FINANCIAL INSTITUTIONS

Litigation and bankruptcy checks for companies and debtors.

## E-DISCOVERY AND LEGAL VENDORS

Sync your system to PACER to automate legal marketing.