



US 20130095823A1

(19) **United States**

(12) **Patent Application Publication**  
**KLASSEN**

(10) **Pub. No.: US 2013/0095823 A1**

(43) **Pub. Date: Apr. 18, 2013**

(54) **METHOD OF MANAGING INBOUND COMMUNICATIONS BASED ON THE CURRENT LOCATION OF A WIRELESS COMMUNICATIONS DEVICE**

**Publication Classification**

(51) **Int. Cl.**  
*H04W 8/08* (2006.01)  
(52) **U.S. Cl.**  
CPC ..... *H04W 8/08* (2013.01)  
USPC ..... *455/432.1*

(71) Applicant: **Research In Motion Limited**, Waterloo (CA)

(72) Inventor: **Gerhard Dietrich KLASSEN**, Waterloo (CA)

(73) Assignee: **RESEARCH IN MOTION LIMITED**, Waterloo (CA)

(21) Appl. No.: **13/691,987**

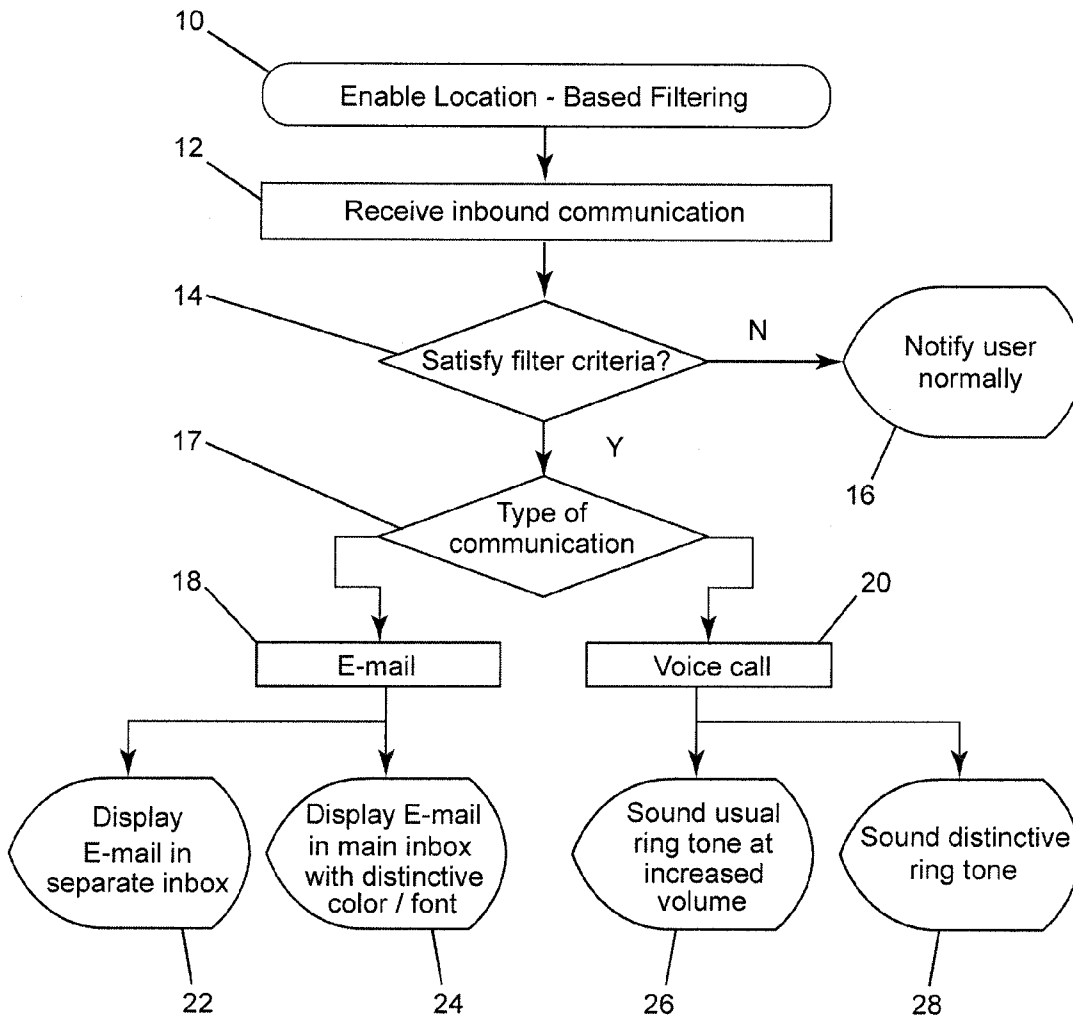
(22) Filed: **Dec. 3, 2012**

**Related U.S. Application Data**

(63) Continuation of application No. 12/014,839, filed on Jan. 16, 2008, now Pat. No. 8,326,285.

(57) **ABSTRACT**

A method of managing inbound communications received by a roaming wireless communications device entails enabling a user of the roaming wireless communications device to activate an inbound communications filter having filter criteria based on a current location of the user and a current location of a sender of an inbound communication. Once the wireless device has determined whether the inbound communication satisfies the filter criteria, the wireless device notifies the user that the inbound communication has been received provided that the inbound communication satisfies the filter criteria.



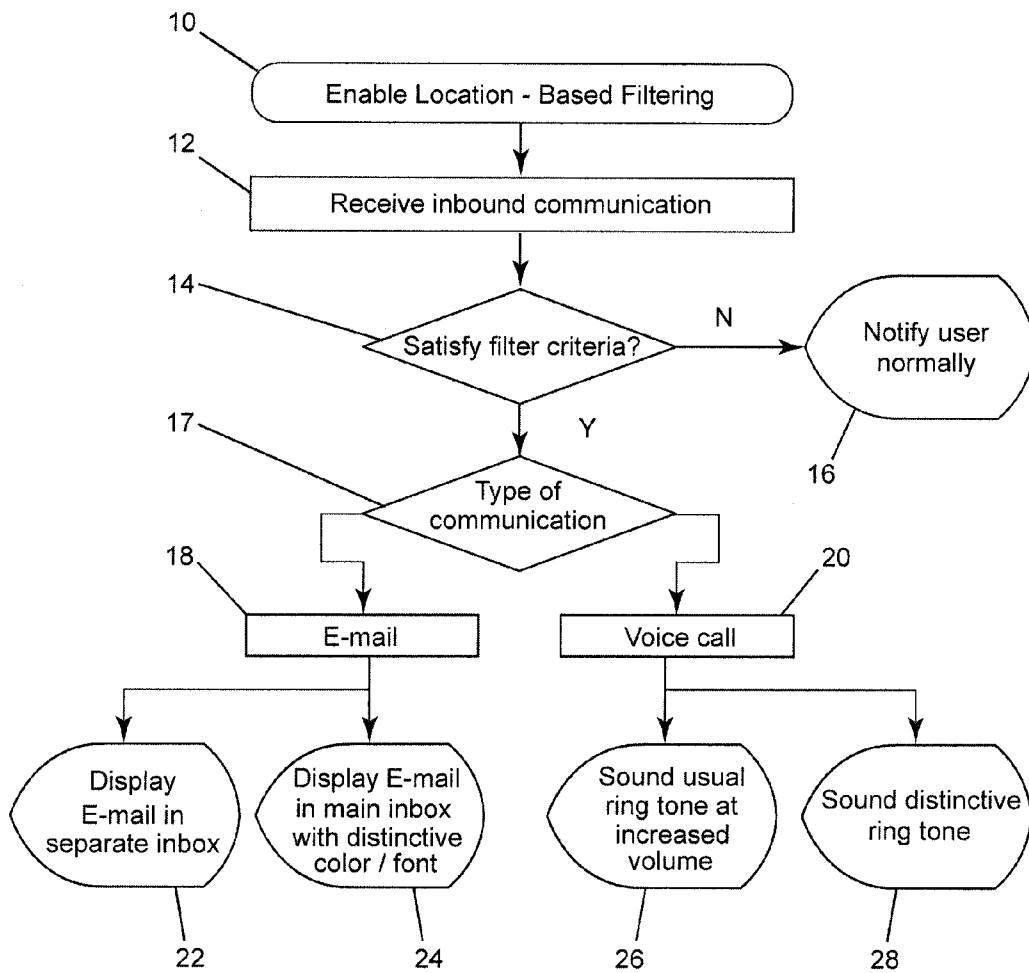


FIG. 1

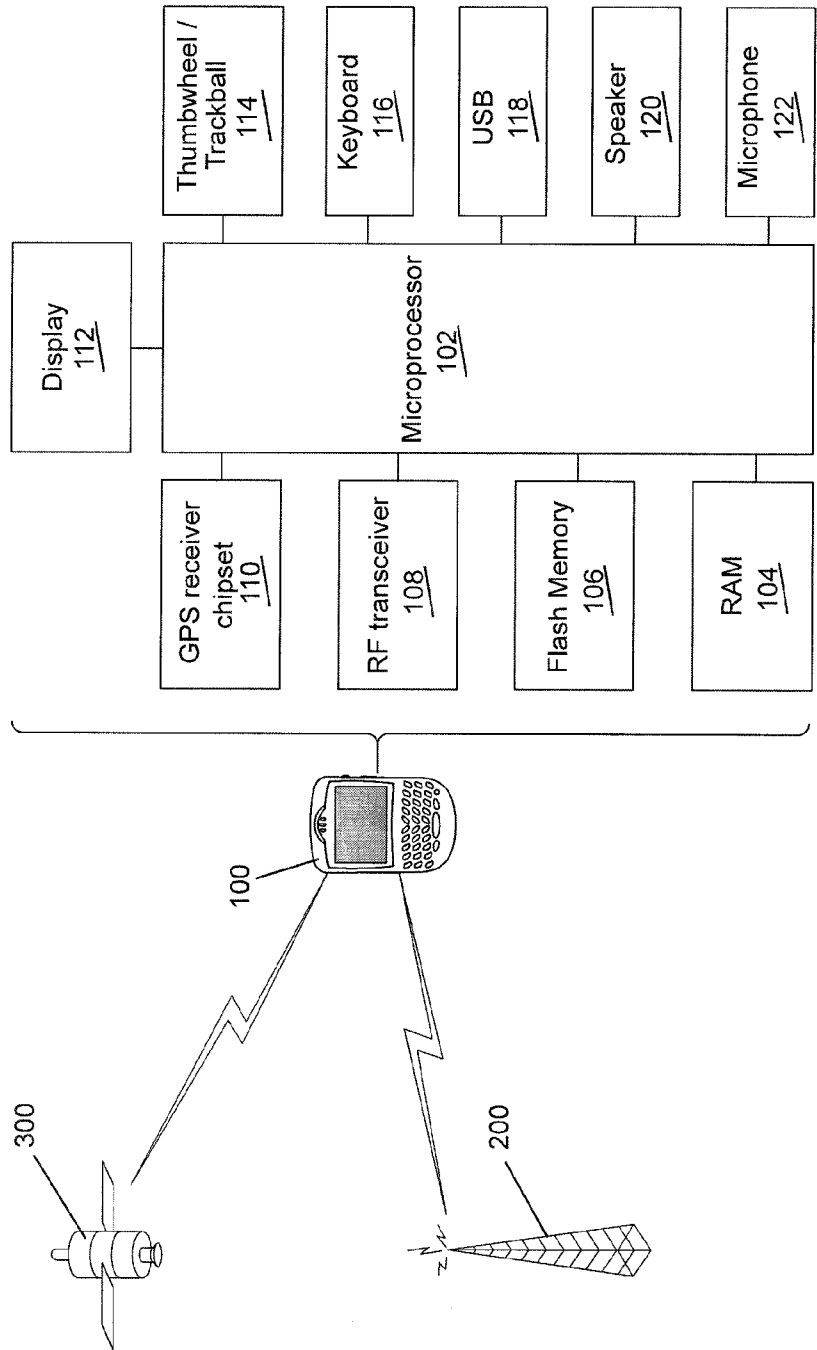


FIG. 2

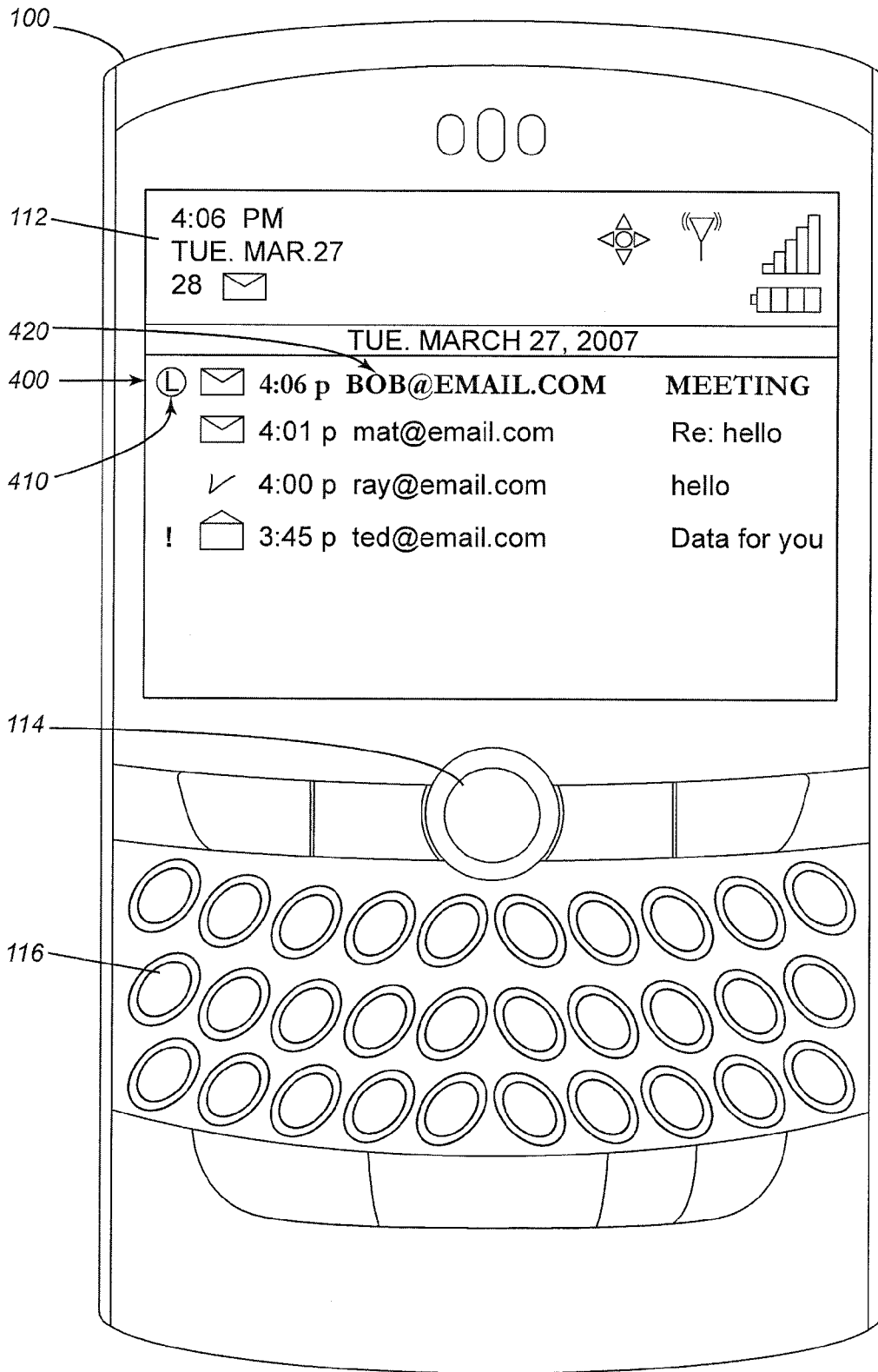


FIG. 3

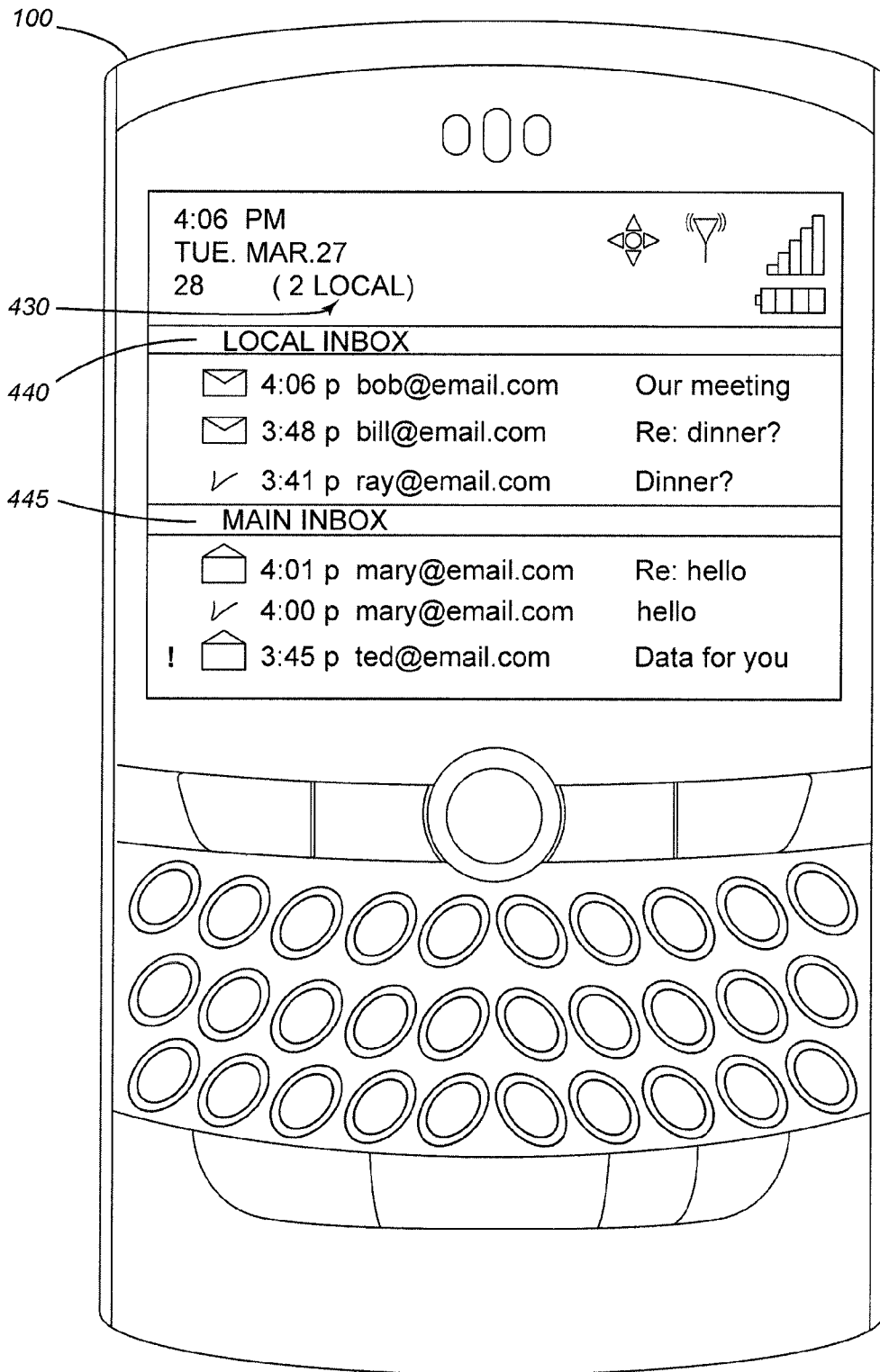


FIG. 4

# Explore Litigation Insights

Docket Alarm provides insights to develop a more informed litigation strategy and the peace of mind of knowing you're on top of things.

## Real-Time Litigation Alerts



Keep your litigation team up-to-date with **real-time alerts** and advanced team management tools built for the enterprise, all while greatly reducing PACER spend.

Our comprehensive service means we can handle Federal, State, and Administrative courts across the country.

## Advanced Docket Research



With over 230 million records, Docket Alarm's cloud-native docket research platform finds what other services can't. Coverage includes Federal, State, plus PTAB, TTAB, ITC and NLRB decisions, all in one place.

Identify arguments that have been successful in the past with full text, pinpoint searching. Link to case law cited within any court document via Fastcase.

## Analytics At Your Fingertips



Learn what happened the last time a particular judge, opposing counsel or company faced cases similar to yours.

Advanced out-of-the-box PTAB and TTAB analytics are always at your fingertips.

## API

Docket Alarm offers a powerful API (application programming interface) to developers that want to integrate case filings into their apps.

## LAW FIRMS

Build custom dashboards for your attorneys and clients with live data direct from the court.

Automate many repetitive legal tasks like conflict checks, document management, and marketing.

## FINANCIAL INSTITUTIONS

Litigation and bankruptcy checks for companies and debtors.

## E-DISCOVERY AND LEGAL VENDORS

Sync your system to PACER to automate legal marketing.