



US 20050038688A1

(19) **United States**(12) **Patent Application Publication**
Collins et al.(10) **Pub. No.: US 2005/0038688 A1**(43) **Pub. Date: Feb. 17, 2005**(54) **SYSTEM AND METHOD FOR MATCHING
LOCAL BUYERS AND SELLERS FOR THE
PROVISION OF COMMUNITY BASED
SERVICES**(76) **Inventors: Albert E. Collins**, Stamford, CT (US);
William P. Kane JR., New York, NY
(US); **Ajaz Rana**, Monmouth Junction,
NJ (US); **Leo E. Scullin**, New York,
NY (US)

Correspondence Address:

WOODCOCK WASHBURN LLP
ONE LIBERTY PLACE, 46TH FLOOR
1650 MARKET STREET
PHILADELPHIA, PA 19103 (US)(21) **Appl. No.: 10/641,483**(22) **Filed: Aug. 15, 2003****Publication Classification**(51) **Int. Cl.⁷ G06F 17/60**(52) **U.S. Cl. 705/9; 705/37**(57) **ABSTRACT**

A consumer-centric service for matching local consumers with local service providers. A matching is performed between consumer needs and local vendor capabilities and the results are presented back to the consumer so that the choice of which vendors to be contacted is left to the consumer. Mechanisms are provided for immediately and automatically contacting the chosen vendor in one or more of a plurality of communication media and offering the chosen vendor the details of the consumer's request, including the preferred method of contact information, for a fee. Also, the system immediately informs the consumer about the status of the vendor contacts, including whether or not the vendor has accepted the lead. Once a chosen vendor accepts the lead, the consumer is contacted by the vendor, in the manner requested by the consumer. Thus, the invention enables consumers to maintain control over the selection and contact process with matched vendors. The system of the invention is particularly advantageous for providing community based services such as babysitting, cleaning, painting, software support, typing, and in obtaining professional services from professionals such as electricians, carpenters, gardeners, accountants, lawyers, and the like.

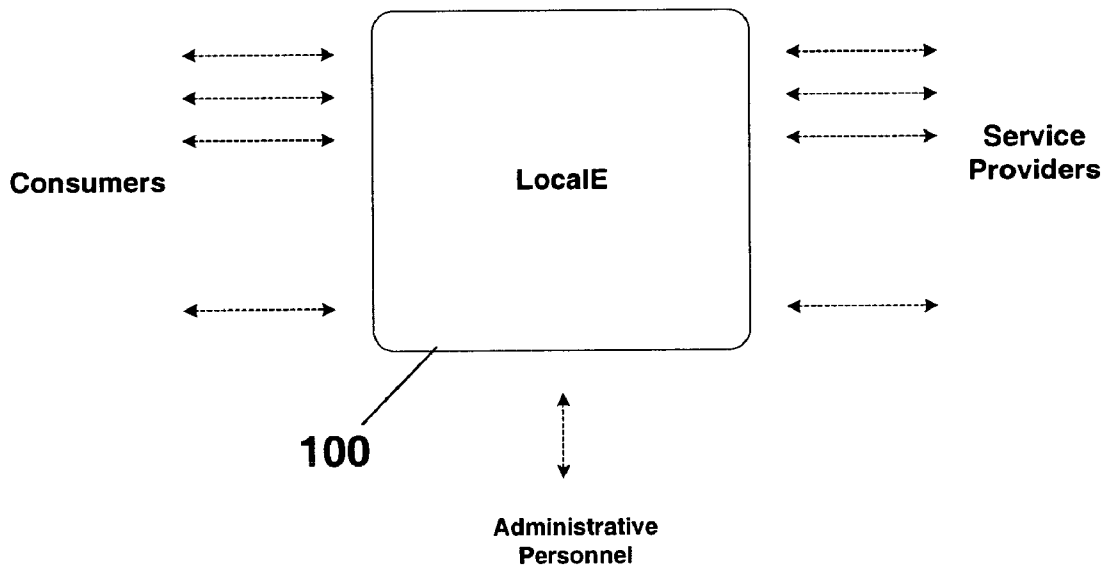
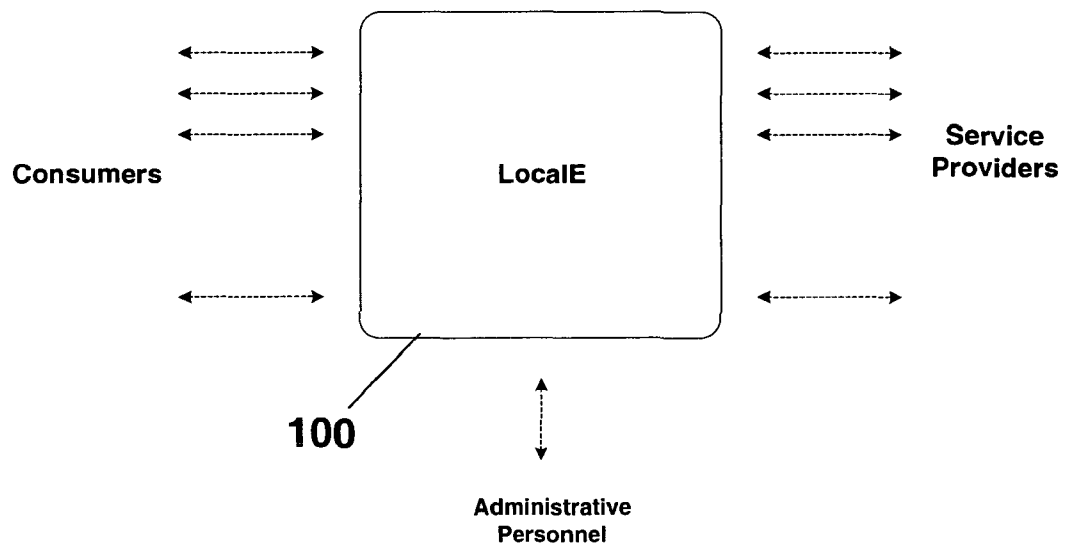
**CHEGG, INC.**
MATCH GROUP, LLC

Figure 1: System and User Roles



**Figure: 2 User Interface Options
(Client Types)**

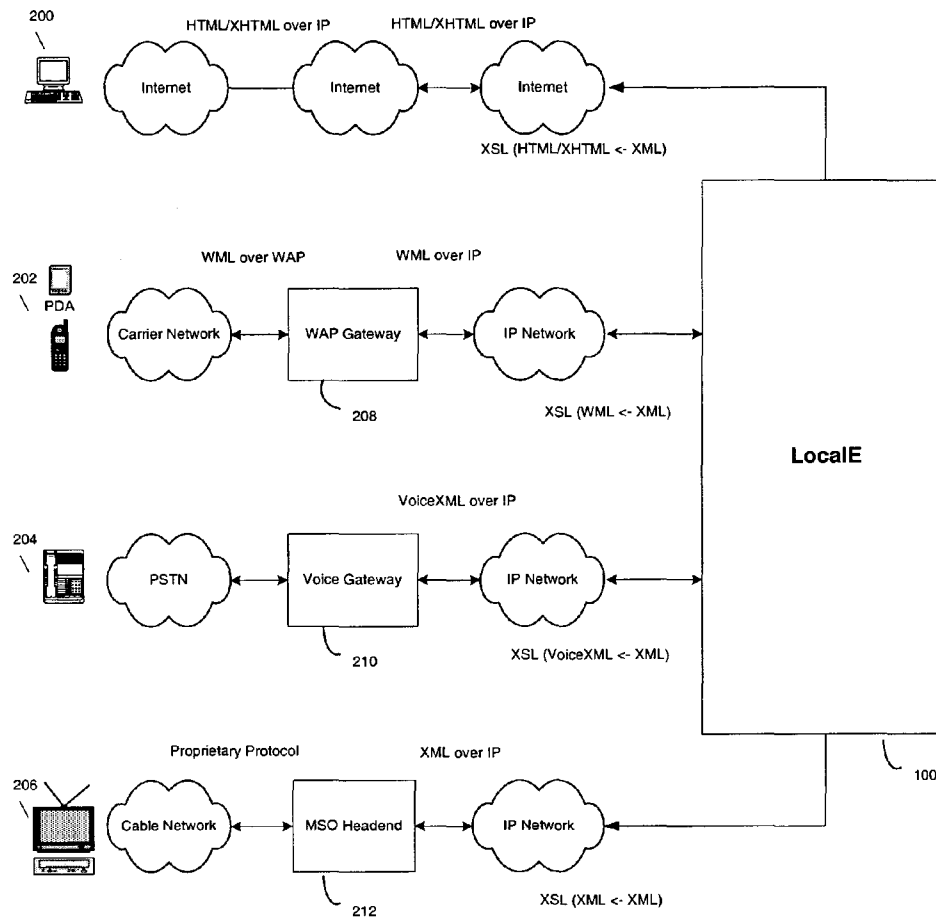
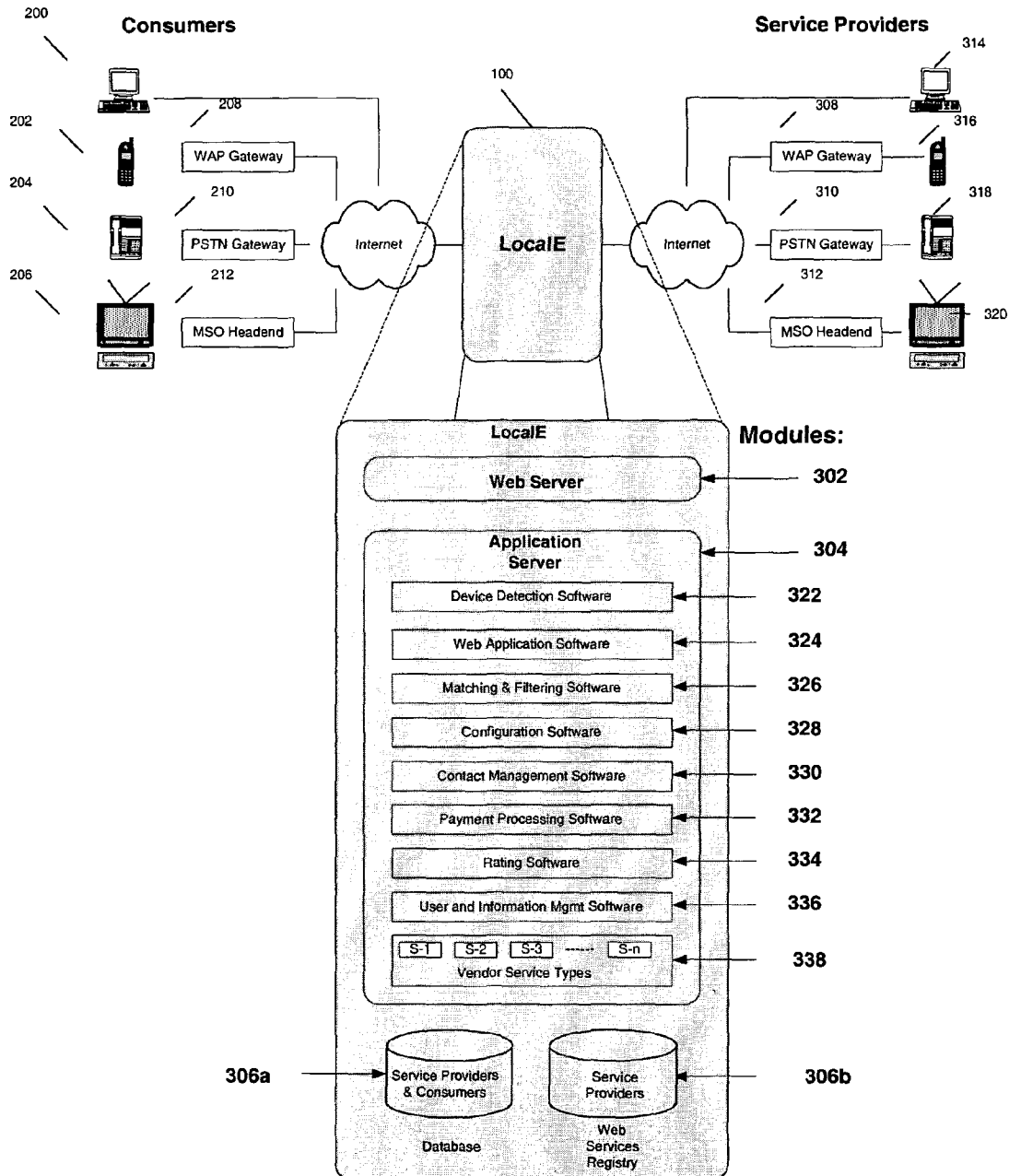
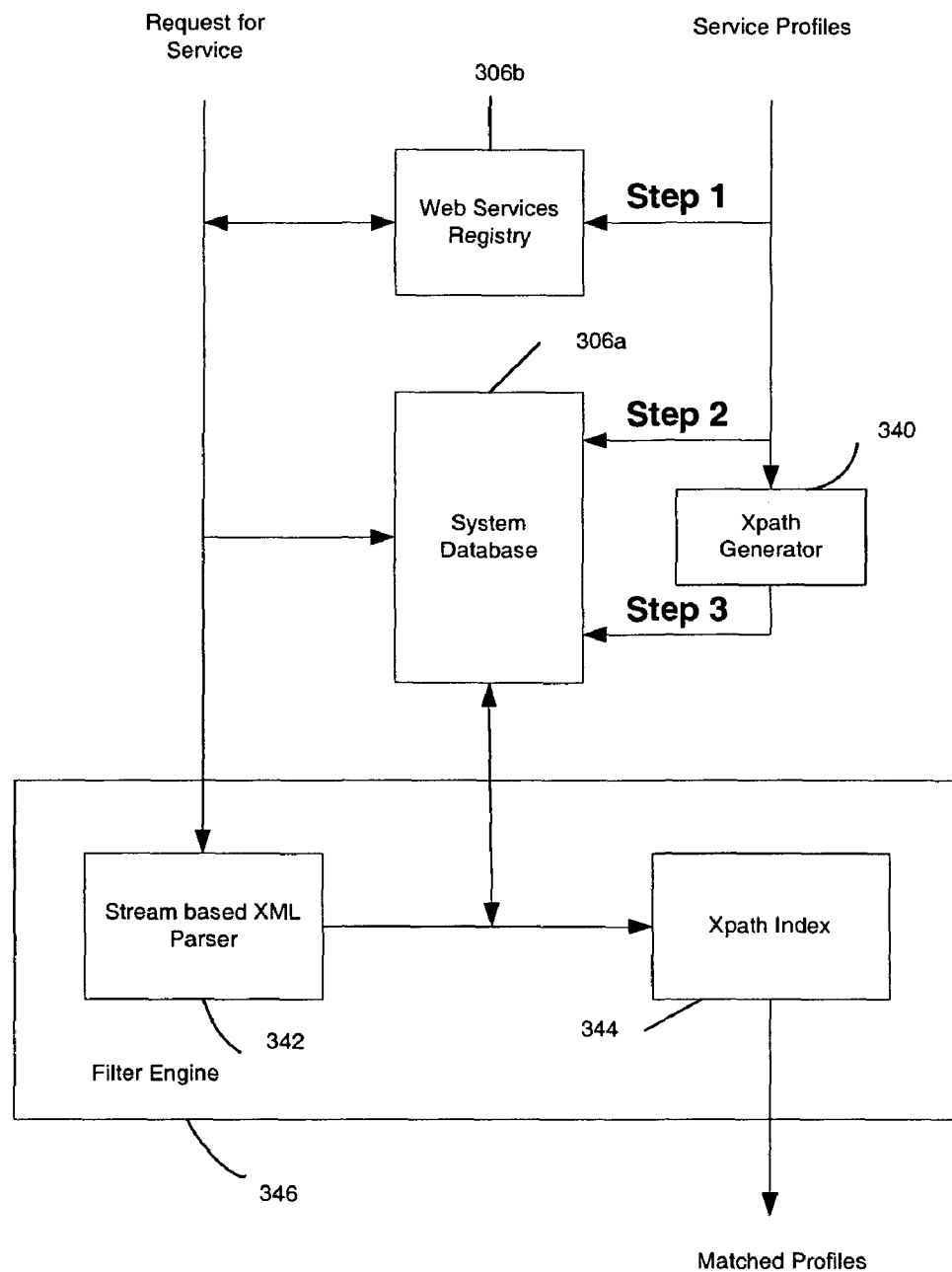


Figure 3: Software and Hardware Components



Figur 3(a): Configure Service



Explore Litigation Insights

Docket Alarm provides insights to develop a more informed litigation strategy and the peace of mind of knowing you're on top of things.

Real-Time Litigation Alerts



Keep your litigation team up-to-date with **real-time alerts** and advanced team management tools built for the enterprise, all while greatly reducing PACER spend.

Our comprehensive service means we can handle Federal, State, and Administrative courts across the country.

Advanced Docket Research



With over 230 million records, Docket Alarm's cloud-native docket research platform finds what other services can't. Coverage includes Federal, State, plus PTAB, TTAB, ITC and NLRB decisions, all in one place.

Identify arguments that have been successful in the past with full text, pinpoint searching. Link to case law cited within any court document via Fastcase.

Analytics At Your Fingertips



Learn what happened the last time a particular judge, opposing counsel or company faced cases similar to yours.

Advanced out-of-the-box PTAB and TTAB analytics are always at your fingertips.

API

Docket Alarm offers a powerful API (application programming interface) to developers that want to integrate case filings into their apps.

LAW FIRMS

Build custom dashboards for your attorneys and clients with live data direct from the court.

Automate many repetitive legal tasks like conflict checks, document management, and marketing.

FINANCIAL INSTITUTIONS

Litigation and bankruptcy checks for companies and debtors.

E-DISCOVERY AND LEGAL VENDORS

Sync your system to PACER to automate legal marketing.