



(12) **United States Patent**  
**Kotani**

(10) **Patent No.:** **US 8,713,206 B2**  
(45) **Date of Patent:** **Apr. 29, 2014**

(54) **DISPLAY APPARATUS, CONTROL METHOD THEREOF, AND PROGRAM**

(56) **References Cited**

U.S. PATENT DOCUMENTS

(71) Applicant: **Canon Kabushiki Kaisha**, Tokyo (JP)

6,804,727	B1	10/2004	Rademacher
8,078,767	B2	12/2011	Kotani
2005/0060447	A1	3/2005	Tanaka
2007/0033306	A1	4/2007	Marriott et al.
2007/0162949	A1	7/2007	Nitta et al.
2008/0071937	A1	3/2008	Yoshida
2008/0148138	A1	6/2008	Sparrell
2011/0167140	A1	7/2011	Marriott et al.

(72) Inventor: **Junji Kotani**, Inagi (JP)

(73) Assignee: **Canon Kabushiki Kaisha**, Tokyo (JP)

(\* ) Notice: Subject to any disclaimer, the term of this patent is extended or adjusted under 35 U.S.C. 154(b) by 0 days.

FOREIGN PATENT DOCUMENTS

(21) Appl. No.: **13/707,652**

JP	07-123379	A	5/1995
JP	2002-271721	A	9/2002
JP	2004-350160	A	12/2004
JP	2005-333416	A	12/2005
JP	2006-185288	A	7/2006

(22) Filed: **Dec. 7, 2012**

(Continued)

(65) **Prior Publication Data**

OTHER PUBLICATIONS

US 2013/0162659 A1 Jun. 27, 2013

Korean Office Action dated Mar. 9, 2012, in related Korean Patent Application No. 10-2010-7025011.

**Related U.S. Application Data**

(Continued)

(60) Continuation of application No. 13/281,543, filed on Oct. 26, 2011, now Pat. No. 8,346,986, which is a division of application No. 12/545,270, filed on Aug. 21, 2009, now Pat. No. 8,078,767, which is a continuation of application No. PCT/JP2009/055831, filed on Mar. 24, 2009.

*Primary Examiner* — Ilwoo Park

(74) *Attorney, Agent, or Firm* — Fitzpatrick, Cella, Harper & Scinto

(30) **Foreign Application Priority Data**

May 29, 2008 (JP) ..... 2008-141678

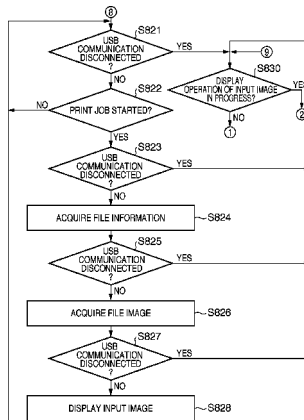
(57) **ABSTRACT**

(51) **Int. Cl.**  
**G06F 13/10** (2006.01)

A display apparatus includes a USB connector used to connect an external device so as to be able to communicate with that device. The display apparatus also includes a CPU which controls to make a display based on data received from the external device with which a communication connection is established via the USB connector. The CPU acquires class information indicating a class of the external device, the communication connection of which is established. When the communication connection with the external device is disconnected, if the acquired class information indicates a predetermined class, the CPU controls to continue the display based on the received data, and if the class information does not indicate the predetermined class, the CPU controls to end the display.

(52) **U.S. Cl.**  
USPC ..... **710/8**; 710/14; 710/15; 710/16

(58) **Field of Classification Search**  
None  
See application file for complete search history.



**Roku Exhibit 1001**

14 Claims, 28 Drawing Sheets

(56)

**References Cited**

JP	2008-282160 A	11/2008
KR	20070069016 A	7/2007
WO	2005/111820 A1	11/2005

FOREIGN PATENT DOCUMENTS

JP	2006-235993 A	9/2006
JP	2006-285070 A	10/2006
JP	2007-279144 A	10/2007

OTHER PUBLICATIONS

European Search Report dated Jul. 11, 2012, in related European Patent Application No. 09754506.5.

FIG. 1A

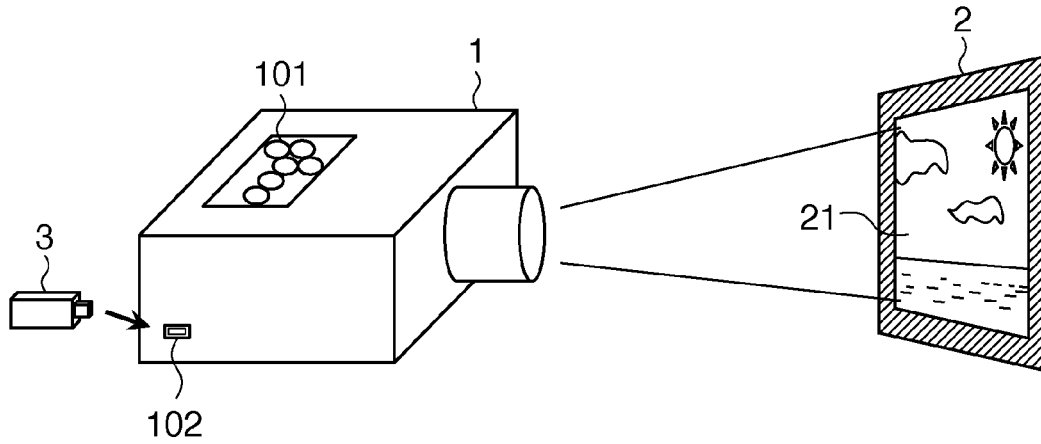
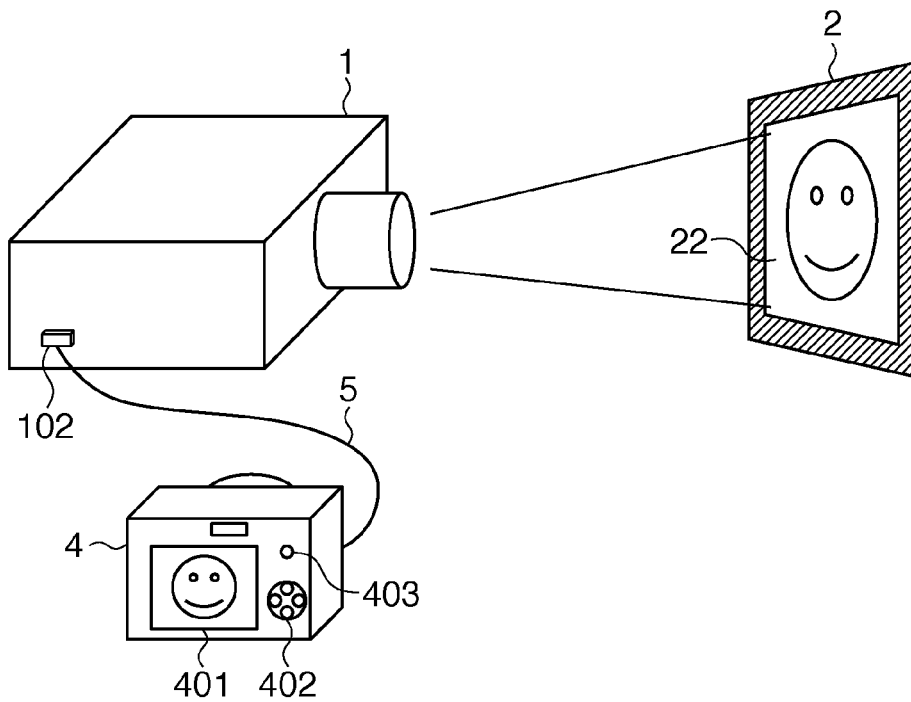
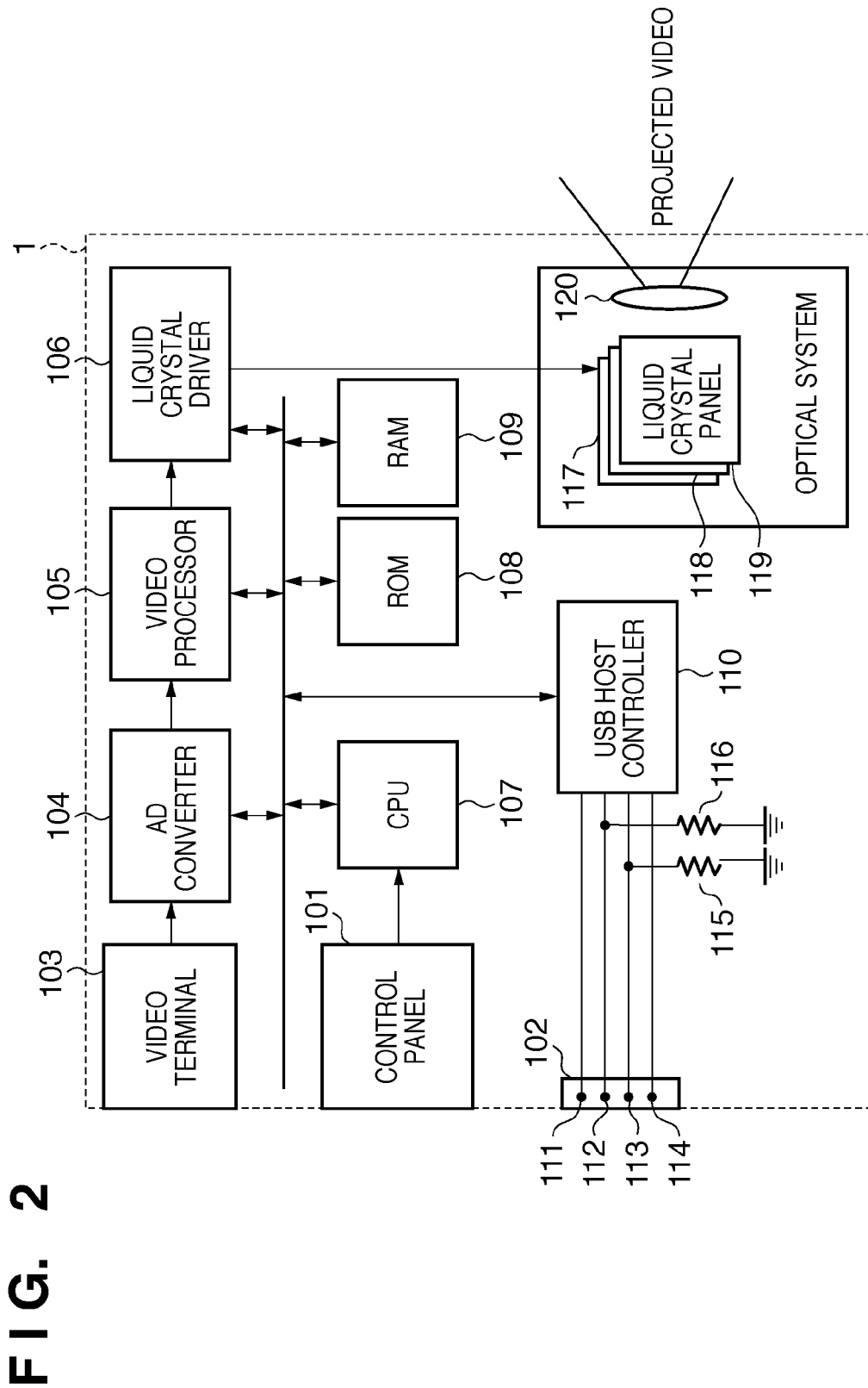


FIG. 1B





# Explore Litigation Insights

Docket Alarm provides insights to develop a more informed litigation strategy and the peace of mind of knowing you're on top of things.

## Real-Time Litigation Alerts



Keep your litigation team up-to-date with **real-time alerts** and advanced team management tools built for the enterprise, all while greatly reducing PACER spend.

Our comprehensive service means we can handle Federal, State, and Administrative courts across the country.

## Advanced Docket Research



With over 230 million records, Docket Alarm's cloud-native docket research platform finds what other services can't. Coverage includes Federal, State, plus PTAB, TTAB, ITC and NLRB decisions, all in one place.

Identify arguments that have been successful in the past with full text, pinpoint searching. Link to case law cited within any court document via Fastcase.

## Analytics At Your Fingertips



Learn what happened the last time a particular judge, opposing counsel or company faced cases similar to yours.

Advanced out-of-the-box PTAB and TTAB analytics are always at your fingertips.

## API

Docket Alarm offers a powerful API (application programming interface) to developers that want to integrate case filings into their apps.

## LAW FIRMS

Build custom dashboards for your attorneys and clients with live data direct from the court.

Automate many repetitive legal tasks like conflict checks, document management, and marketing.

## FINANCIAL INSTITUTIONS

Litigation and bankruptcy checks for companies and debtors.

## E-DISCOVERY AND LEGAL VENDORS

Sync your system to PACER to automate legal marketing.