



US006456234B1

(12) **United States Patent**
Johnson

(10) **Patent No.:** **US 6,456,234 B1**
(45) **Date of Patent:** **Sep. 24, 2002**

(54) **SYSTEM AND METHOD FOR PROACTIVE
CONTENT DELIVERY BY SITUATION
LOCATION**

(76) Inventor: **William J. Johnson**, 1704 Katherine
Ct., Flower Mound, TX (US) 75022

(*) Notice: Subject to any disclaimer, the term of this
patent is extended or adjusted under 35
U.S.C. 154(b) by 0 days.

(21) Appl. No.: **09/589,328**

(22) Filed: **Jun. 7, 2000**

(51) **Int. Cl.**⁷ **G01S 5/02**

(52) **U.S. Cl.** **342/357.09; 342/357.01;**
342/357.03; 342/357.07; 342/357.06; 342/357.09;
342/357.1; 701/23; 701/24; 701/200; 701/213;
701/214; 340/988; 340/990; 340/995

(58) **Field of Search** **342/357.1, 357.01,**
342/357.03, 357.06, 357.07, 357.09, 46,
47; 701/23, 24, 200, 213, 214; 340/988,
990, 995

(56) **References Cited**

U.S. PATENT DOCUMENTS

4,644,351 A * 2/1987 Zabarsky et al. 340/7.21
5,337,044 A * 8/1994 Folger et al. 340/7.1
5,469,362 A * 11/1995 Hunt et al. 700/213
5,758,049 A * 5/1998 Johnson et al. 345/302
6,073,062 A * 6/2000 Hoshino et al. 701/3
6,236,365 B1 * 5/2001 LeBlanc et al. 342/457

6,252,544 B1 * 6/2001 Hoffberg 342/357.1

* cited by examiner

Primary Examiner—William A. Cuchlinski, Jr.

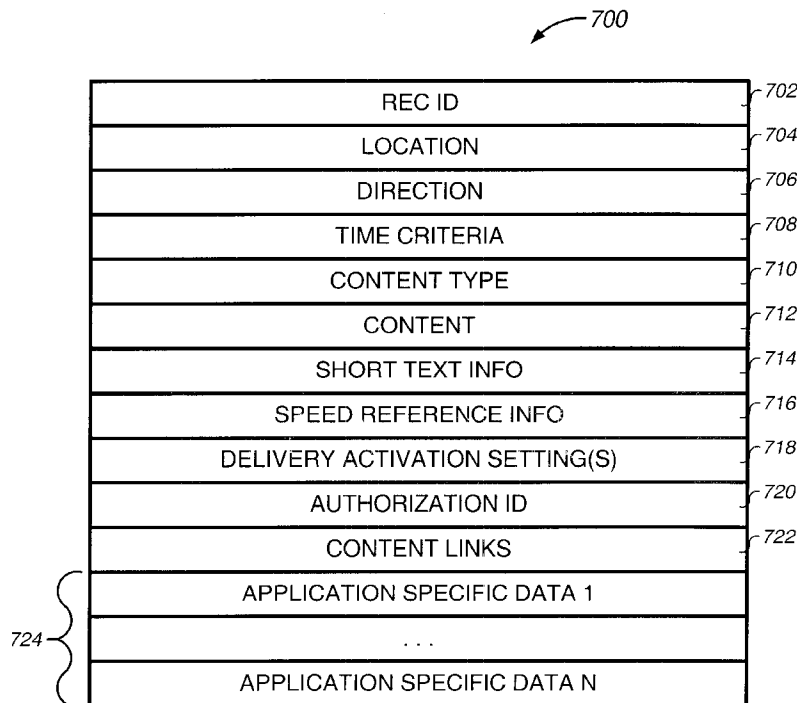
Assistant Examiner—McDieunel Marc

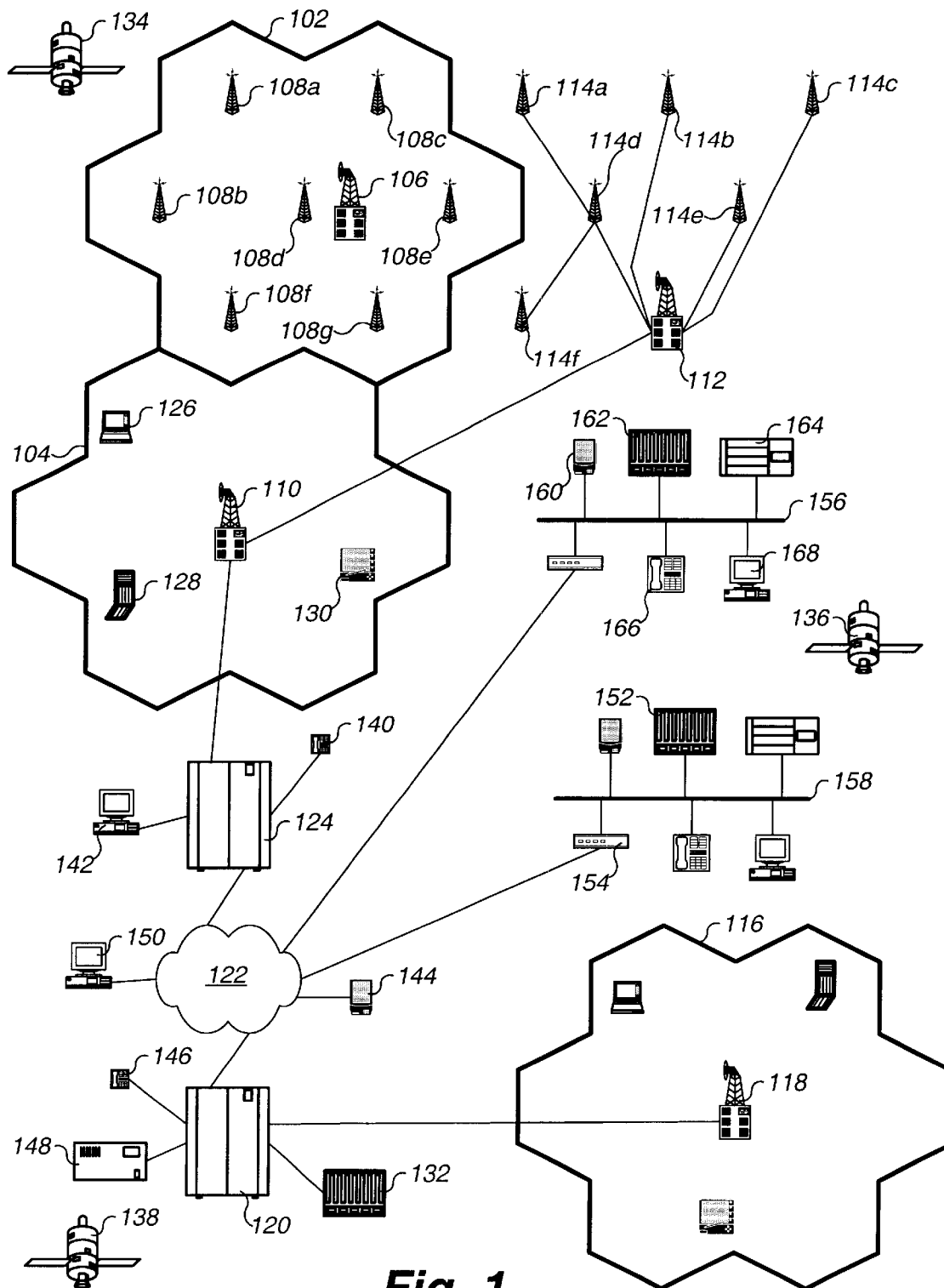
(74) *Attorney, Agent, or Firm*—Richard K. Robinson

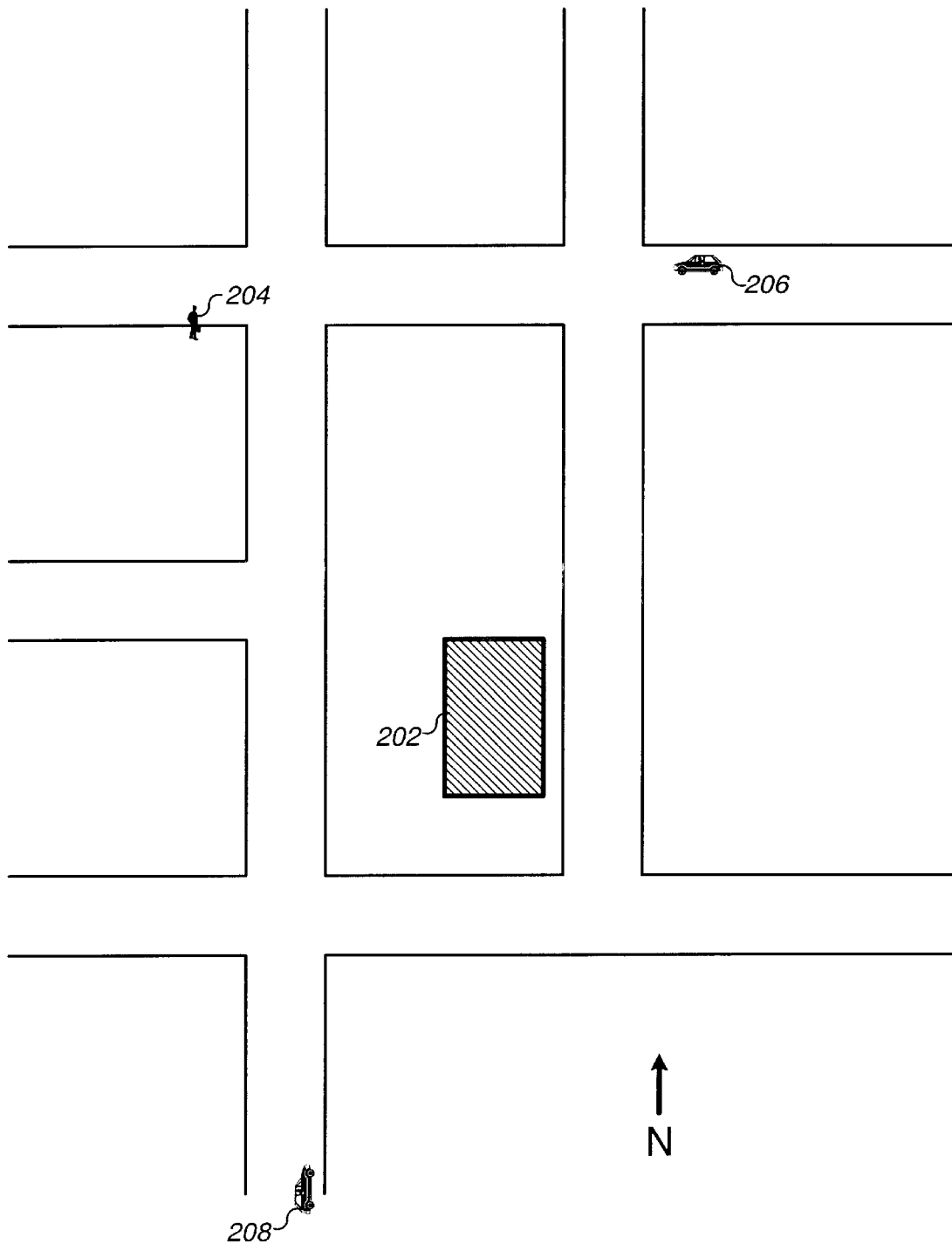
(57) **ABSTRACT**

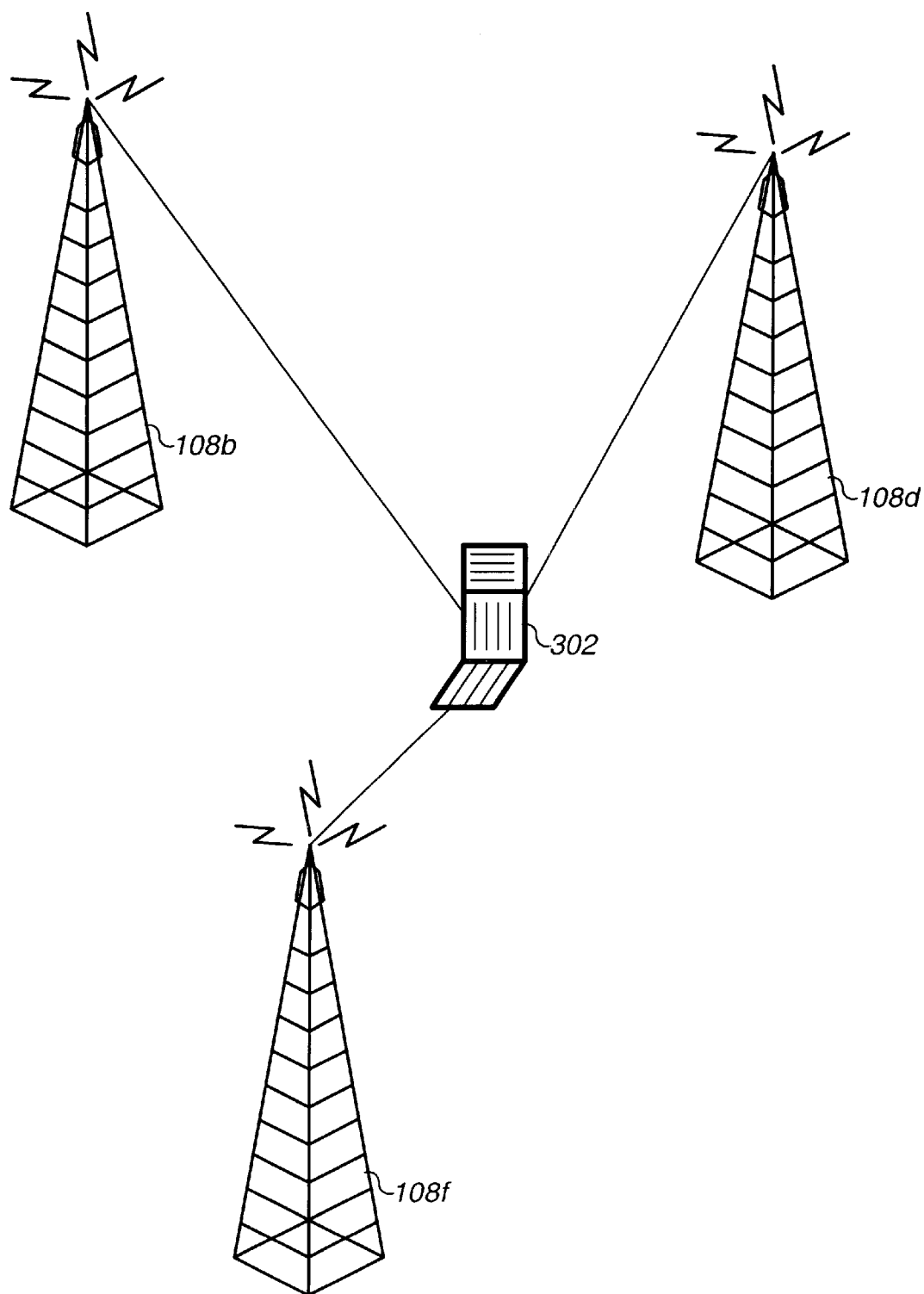
Provided is transmission of situational location dependent information from a server data processing system to a receiving data processing system. The server data processing system communicates with the receiving data processing system in a manner by pushing content when appropriate. A candidate delivery event associated with a current positional attribute of the receiving data processing system is recognized and a situational location of the remote data processing system is determined. The candidate delivery event may be a location and/or direction change, device state change, or movement exceeding a movement tolerance. The situational location of the remote data processing system may be its location, direction, location and direction, proximity to a location, state change, or location and/or direction relative to a previous location and/or direction, or combinations thereof. A set of delivery content from a delivery content database is transmitted from the server data processing system to the receiving data processing system according to the situational location of the receiving data processing system, and according to delivery constraints. The delivery content is configurable by authorized administrators on an instant activation basis for proactive delivery.

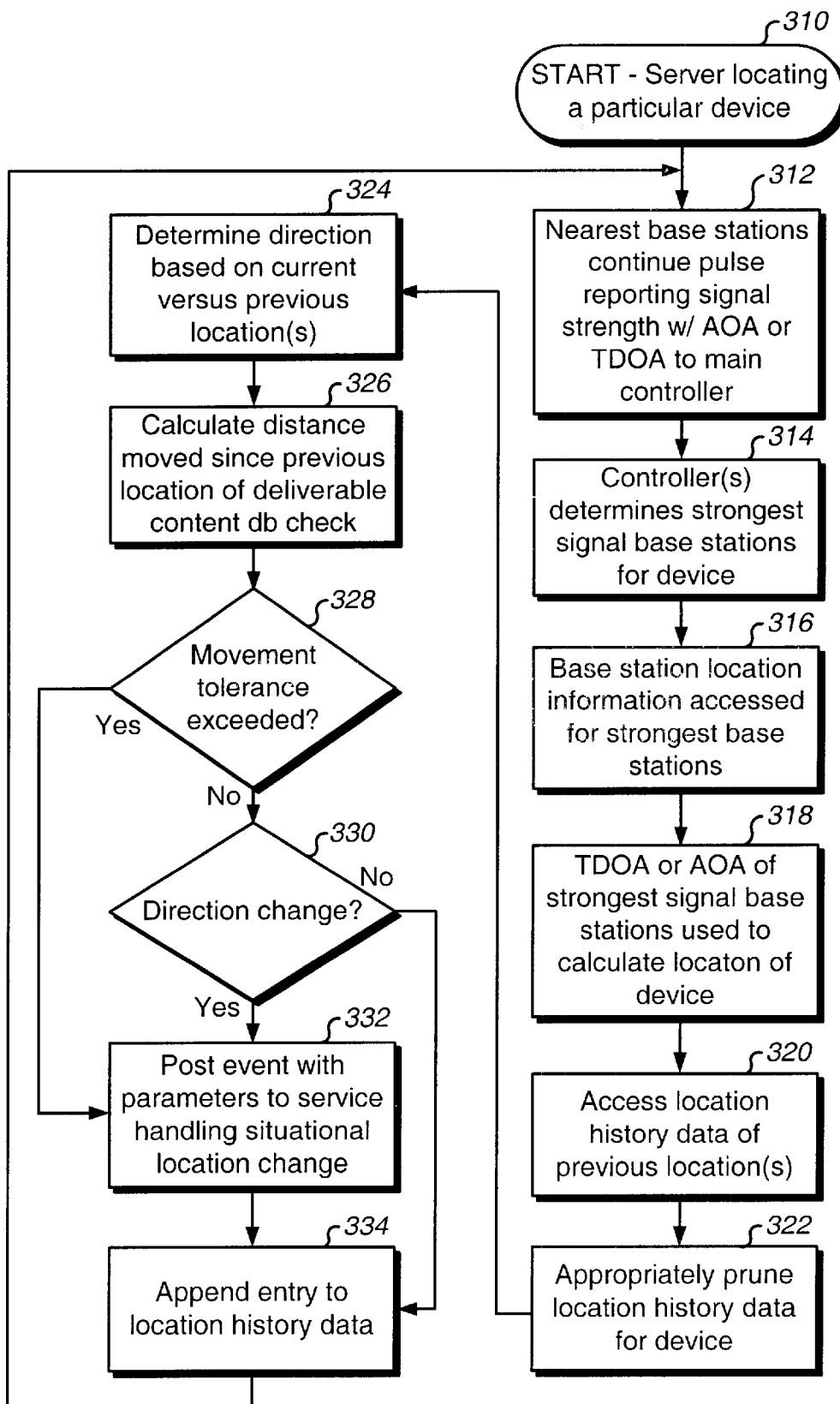
22 Claims, 36 Drawing Sheets



**Fig. 1**

**Fig. 2**

**Fig. 3A**

**Fig. 3B**

Explore Litigation Insights

Docket Alarm provides insights to develop a more informed litigation strategy and the peace of mind of knowing you're on top of things.

Real-Time Litigation Alerts



Keep your litigation team up-to-date with **real-time alerts** and advanced team management tools built for the enterprise, all while greatly reducing PACER spend.

Our comprehensive service means we can handle Federal, State, and Administrative courts across the country.

Advanced Docket Research



With over 230 million records, Docket Alarm's cloud-native docket research platform finds what other services can't. Coverage includes Federal, State, plus PTAB, TTAB, ITC and NLRB decisions, all in one place.

Identify arguments that have been successful in the past with full text, pinpoint searching. Link to case law cited within any court document via Fastcase.

Analytics At Your Fingertips



Learn what happened the last time a particular judge, opposing counsel or company faced cases similar to yours.

Advanced out-of-the-box PTAB and TTAB analytics are always at your fingertips.

API

Docket Alarm offers a powerful API (application programming interface) to developers that want to integrate case filings into their apps.

LAW FIRMS

Build custom dashboards for your attorneys and clients with live data direct from the court.

Automate many repetitive legal tasks like conflict checks, document management, and marketing.

FINANCIAL INSTITUTIONS

Litigation and bankruptcy checks for companies and debtors.

E-DISCOVERY AND LEGAL VENDORS

Sync your system to PACER to automate legal marketing.