



[54] METHOD OF AUTHENTICATING GAME DATA SETS IN AN ELECTRONIC CASINO GAMING SYSTEM

[75] Inventors: Allan E. Alcorn, Portola Valley; Michael Barnett, Santa Clara; Louis D Giacalone, Jr., Palo Alto; Adam E. Levinthal, Redwood City, all of Calif.

[73] Assignee: Silicon Gaming - Nevada, Las Vegas, Nev.

[*] Notice: This patent is subject to a terminal disclaimer.

[21] Appl. No.: 09/107,031

[22] Filed: Jun. 29, 1998

Related U.S. Application Data

[63] Continuation-in-part of application No. 08/981,882, filed as application No. PCT/US96/10463, Jun. 17, 1996, which is a continuation-in-part of application No. 08/497,662, Jun. 29, 1995, Pat. No. 5,643,086.

[51] Int. Cl.⁷ G06F 5/00

[52] U.S. Cl. 463/29; 380/25

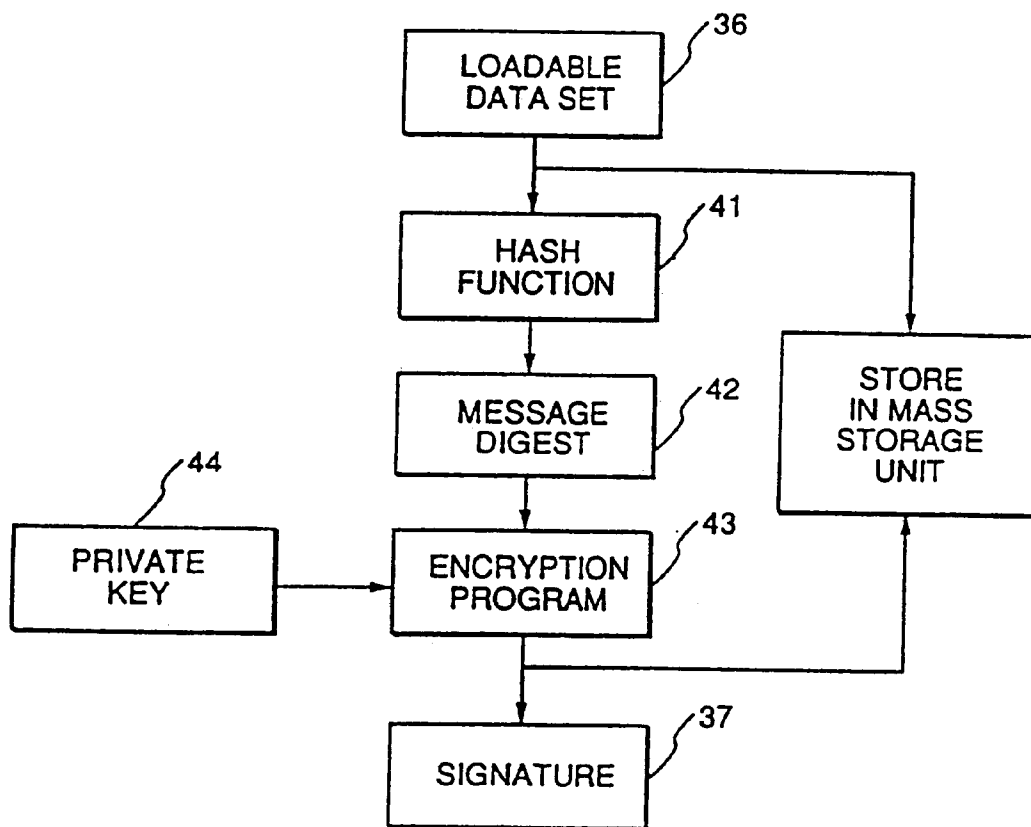
[58] Field of Search 380/28, 4, 9, 23, 380/30, 49, 50, 59; 463/29, 16, 40, 41, 42, 44

Primary Examiner—Valencia Martin-Wallace
Assistant Examiner—John Paradiso
Attorney, Agent, or Firm—Claude A. S. Hamrick; Justin Boyce; Oppenheimer Wolff & Donnelly LLP

[57] ABSTRACT

Authentication of a casino game data set is carried out within the casino game console using an authentication program stored in an unalterable ROM physically located within the casino game console. The casino game data set and a unique signature are stored in a mass storage device, which may comprise a read only unit or a read/write unit and which may be physically located either within the casino game console or remotely located and linked to the casino game console over a suitable network. The authentication program stored in the unalterable ROM performs an authentication check on the casino game data set at appropriate times, such as prior to commencement of game play, at periodic intervals or upon demand. At appropriate occasions, the contents of the unalterable ROM can be verified by computing the message digest of the unalterable ROM contents and comparing this computed message digest with a securely stored copy of the message digest computed from the ROM contents prior to installation in the casino game console.

49 Claims, 4 Drawing Sheets



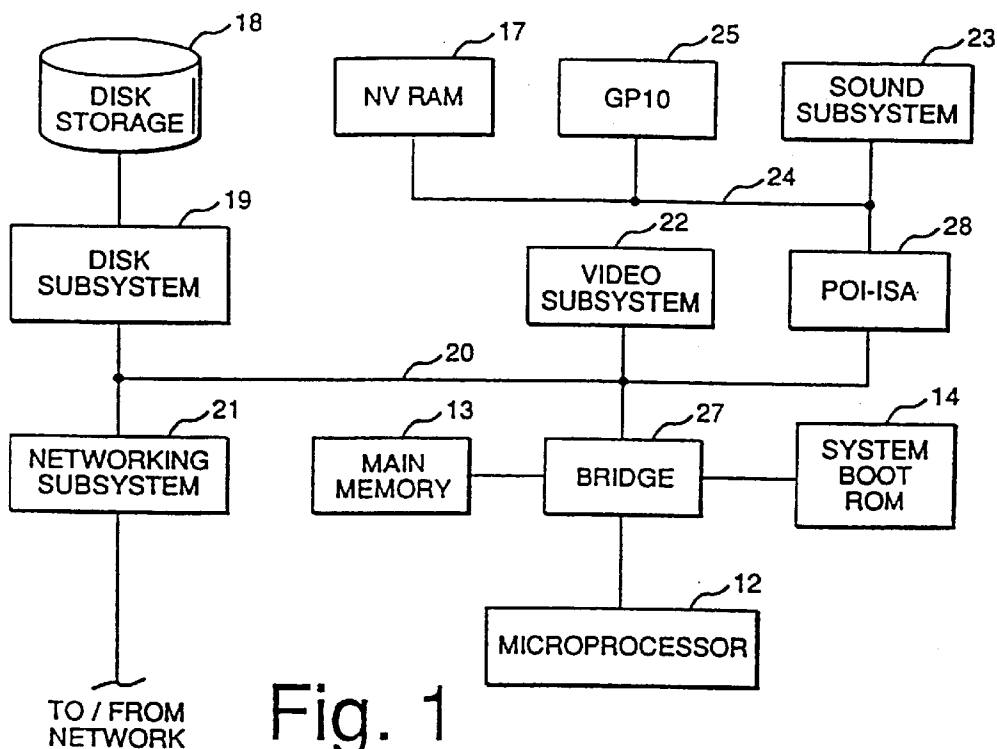


Fig. 1

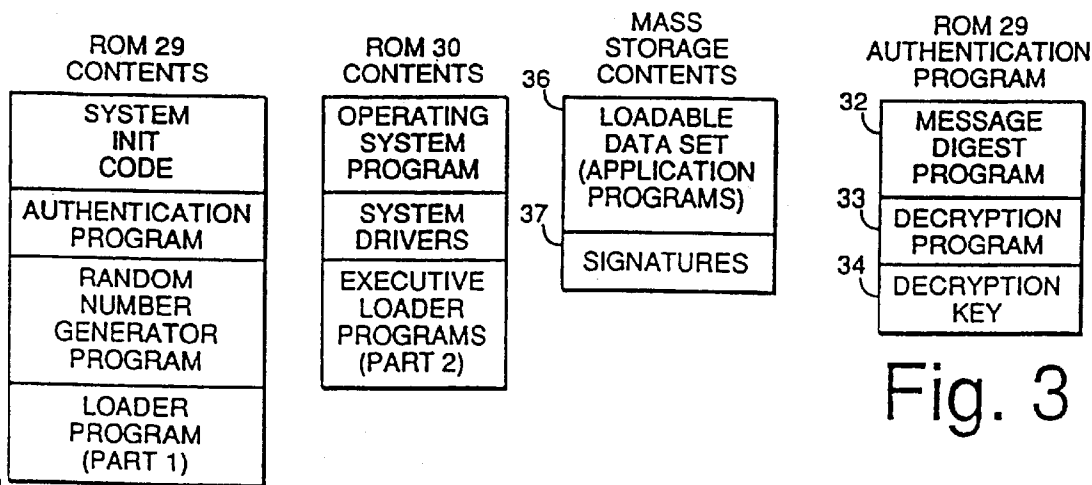


Fig. 2

Fig. 3

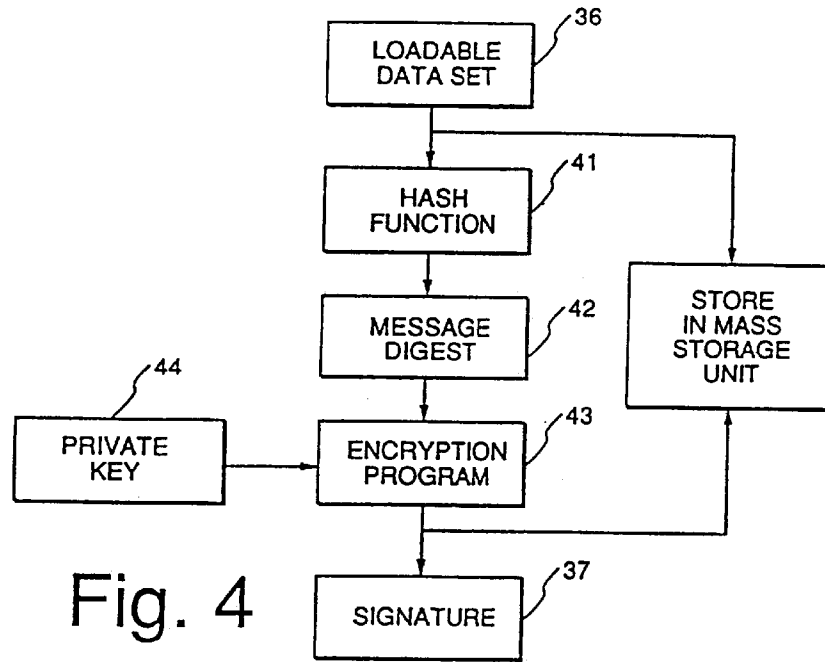


Fig. 4

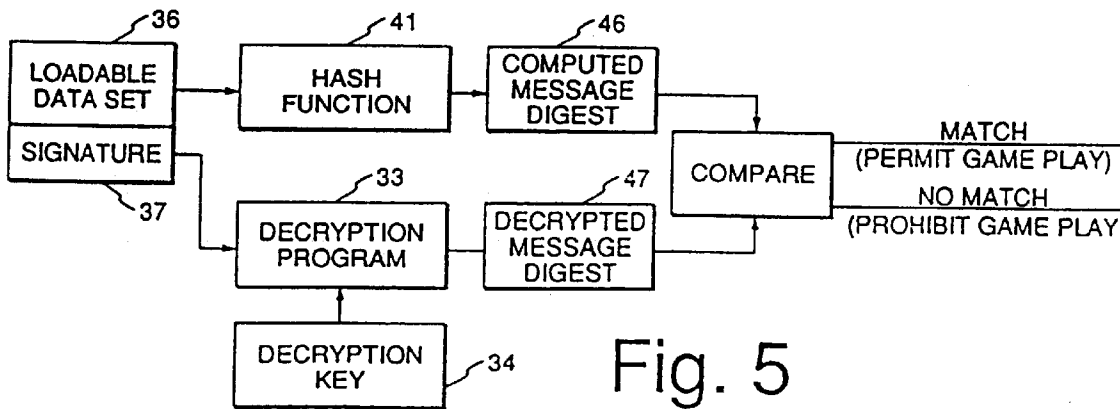


Fig. 5

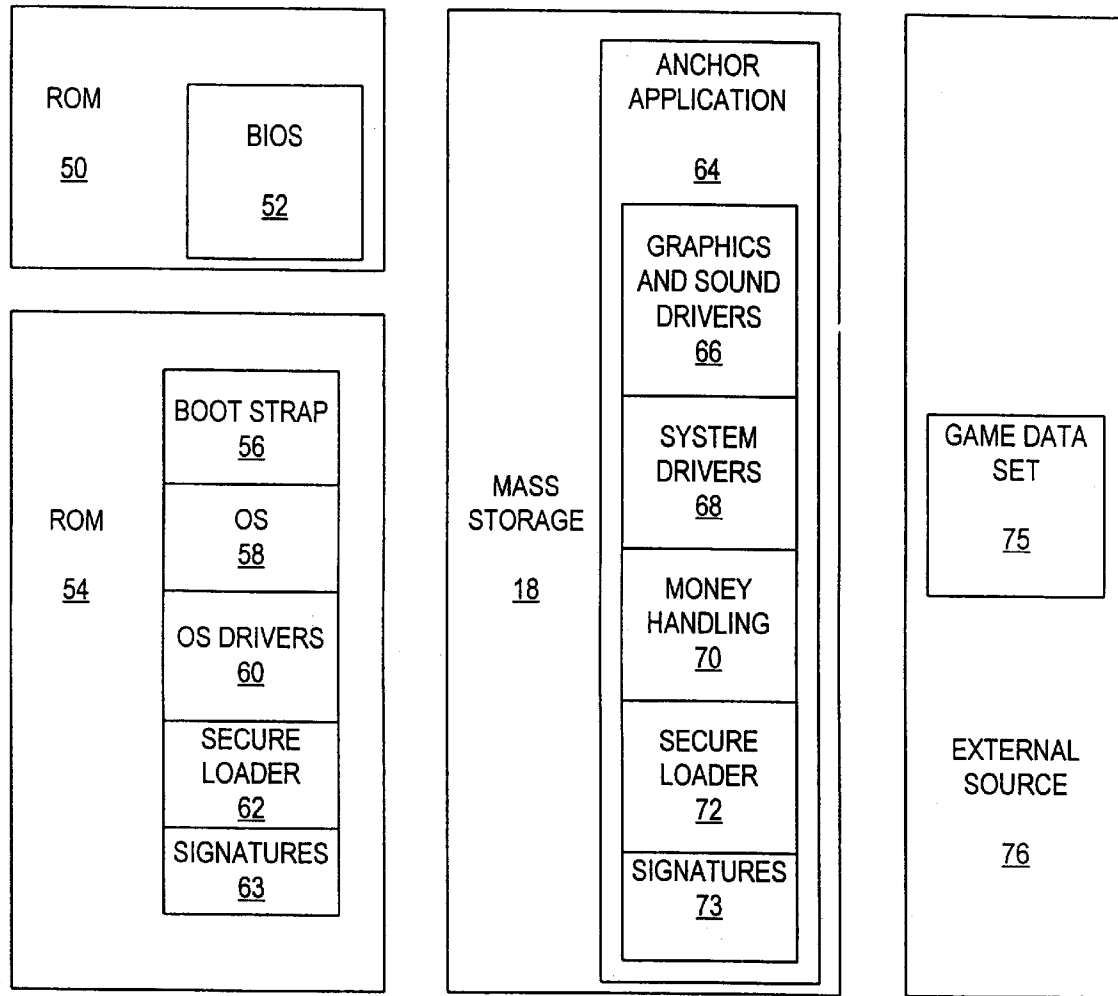


FIG. 6

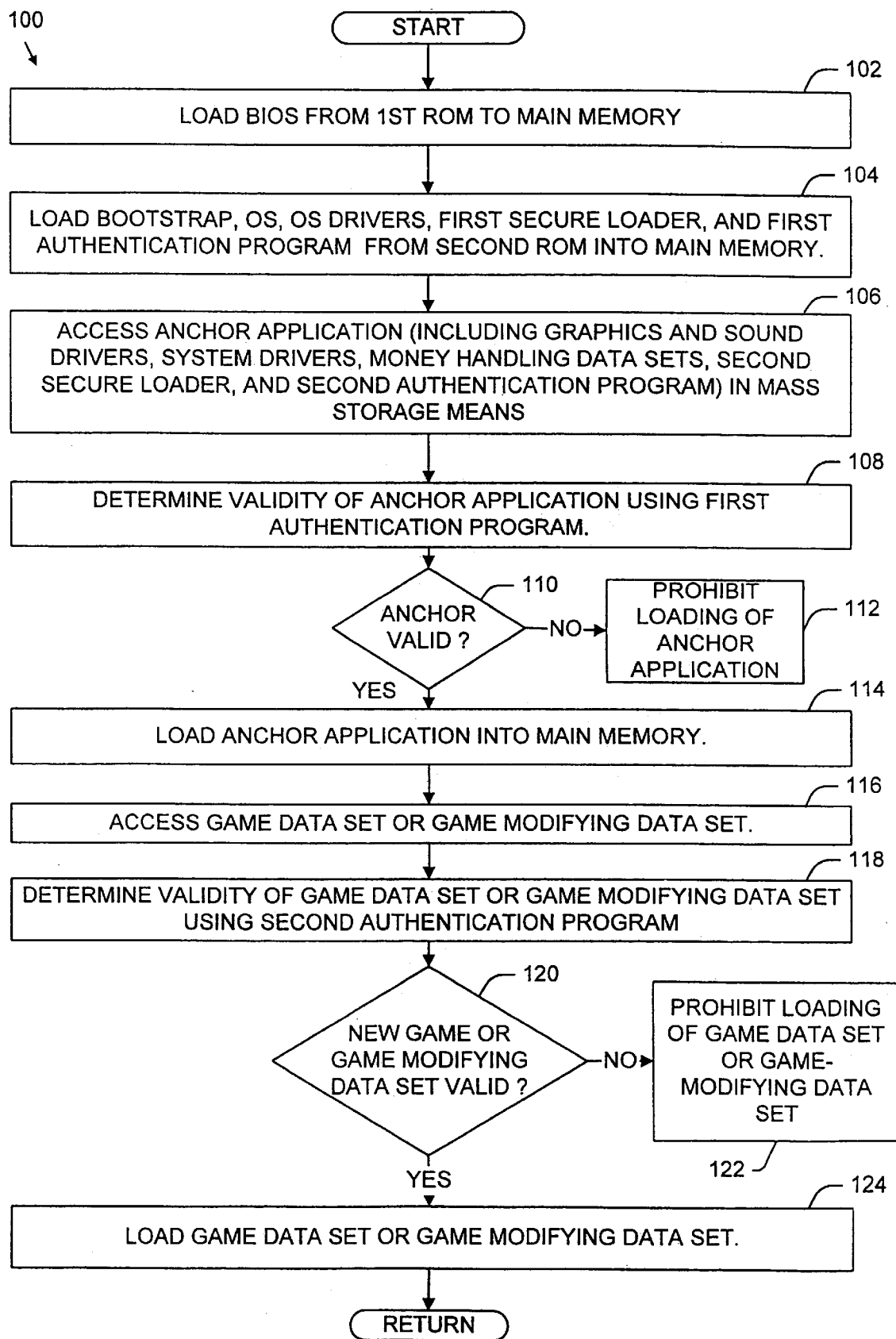


FIG. 7

Explore Litigation Insights

Docket Alarm provides insights to develop a more informed litigation strategy and the peace of mind of knowing you're on top of things.

Real-Time Litigation Alerts



Keep your litigation team up-to-date with **real-time alerts** and advanced team management tools built for the enterprise, all while greatly reducing PACER spend.

Our comprehensive service means we can handle Federal, State, and Administrative courts across the country.

Advanced Docket Research



With over 230 million records, Docket Alarm's cloud-native docket research platform finds what other services can't. Coverage includes Federal, State, plus PTAB, TTAB, ITC and NLRB decisions, all in one place.

Identify arguments that have been successful in the past with full text, pinpoint searching. Link to case law cited within any court document via Fastcase.

Analytics At Your Fingertips



Learn what happened the last time a particular judge, opposing counsel or company faced cases similar to yours.

Advanced out-of-the-box PTAB and TTAB analytics are always at your fingertips.

API

Docket Alarm offers a powerful API (application programming interface) to developers that want to integrate case filings into their apps.

LAW FIRMS

Build custom dashboards for your attorneys and clients with live data direct from the court.

Automate many repetitive legal tasks like conflict checks, document management, and marketing.

FINANCIAL INSTITUTIONS

Litigation and bankruptcy checks for companies and debtors.

E-DISCOVERY AND LEGAL VENDORS

Sync your system to PACER to automate legal marketing.