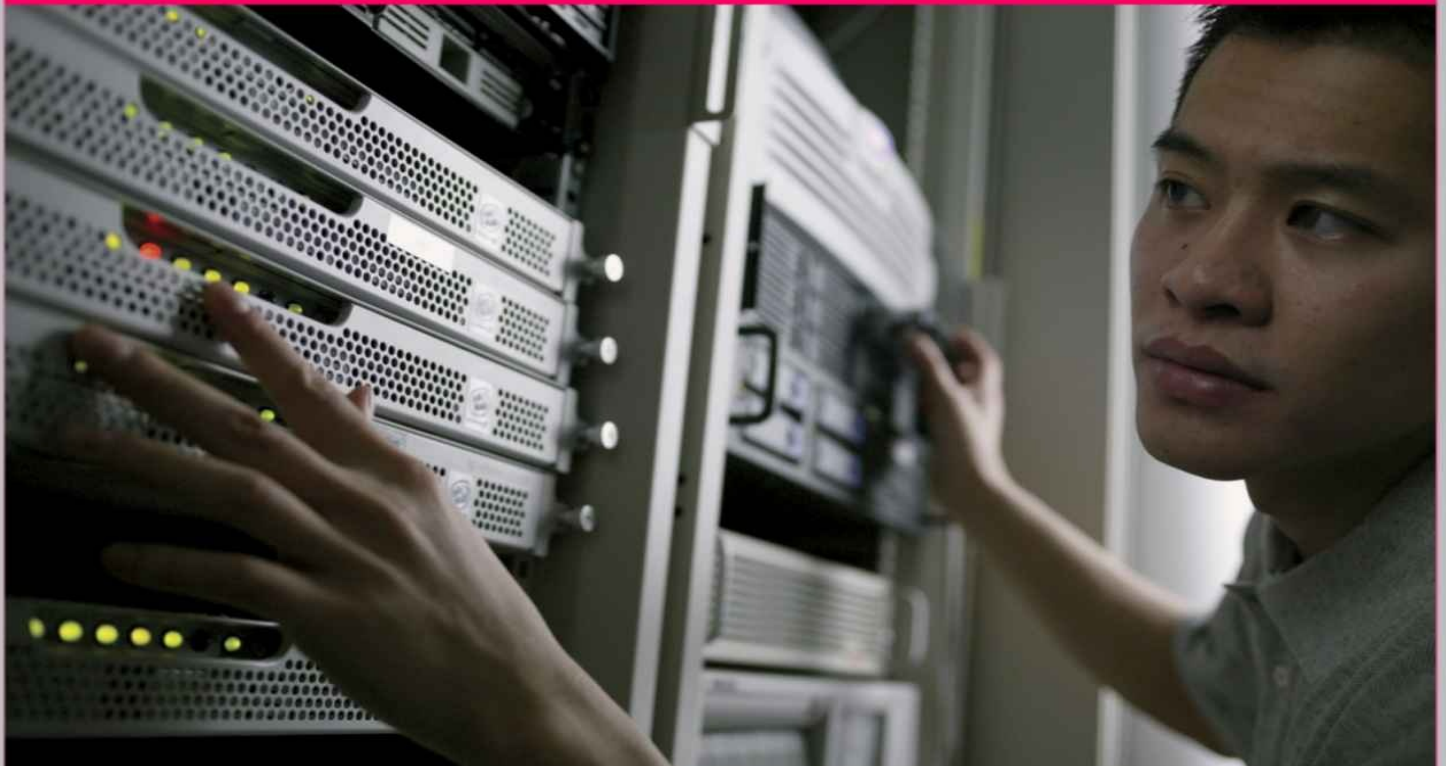


Dictionary of Computer and Internet Terms

JOHN C. RIGDON



**Dictionary of Computer and Internet
Terms
(Vol. 1)**

**John C. Rigdon,
Editor**

Dictionary of Computer and Internet Terms

1st Edition – AUG 2016 0/0/0/CS

This dictionary is adapted from Microsoft Language Portal with additions and edits by John C. Rigdon.

© 2016 Eastern Digital Resources. All Rights Reserved. No part of this book may be reproduced by any means without the express written consent of the copyright holder. “Entries from the Microsoft Language Portal. © 2016 Microsoft Corporation. All rights reserved.” Distribution release by Microsoft. See <https://www.microsoft.com/Language/en-US/LicenseAgreement.aspx>

Published by:

Eastern Digital Resources

31 Bramblewood Dr SW

Cartersville, GA 30120

<http://www.wordsrus.info>

EMAIL: Sales@wordsrus.info

Tel. (678) 739-9177

boot sector virus (n)~ A virus that infects computer systems by copying code either to the boot sector on a floppy disk or the partition table on a hard disk. During startup, the virus is loaded into memory. Once in memory, the virus will infect any non-infected disks accessed by the system.

boot volume (n)~ The volume that contains the Windows operating system and its support files. The boot volume can be, but does not have to be, the same as the system volume.

Boot, boot up ~ Usually used to mean ‘start up the computer’. Literally, the process of loading up the operating system and getting the computer ready for use. See- Reboot. A ‘boot password’ is a password you have to give to start up the computer.

bootable (adj)~ Containing the system files necessary for booting a PC and running it.

bootable CD (n)~ A CD-ROM that can be used to start a computer. An automated installation uses a bootable CD to start a computer.

BOOTP (n)~ A protocol used primarily on TCP/IP networks to configure diskless workstations. RFCs 951 and 1542 define this protocol. DHCP is a later boot configuration protocol that uses this protocol. The Microsoft DHCP service provides limited support for BOOTP service.

bootstrap (n)~ The process of starting or resetting a computer or a device. When first turned on (cold boot) or reset (warm boot), the computer runs the software that loads and starts the computer’s operating system, which prepares it for use.

bootstrap installation service (n)~ A service that invokes the bootstrap installation process.

border (n)~ In programs and working environments that feature on-screen windows, the edge surrounding the user’s workspace. Window borders provide a visible frame around a document or graphic. Depending on the program and its requirements, they can also represent an area in which the cursor or a mouse pointer takes on special characteristics. For example, clicking the mouse on a window border can enable the user to resize the window or split the window in two.

border (n)~ The visible line around the edge of an object. For example, the four lines of a rectangle that comprise its border.

Border Painter (PN)~ A tool that is used to apply formatting to borders in a table.

Border Sampler (PN)~ A tool used to collect the formatting of an existing table border so that it can be applied to another border.

Border Styles gallery (PN)~ A gallery of predefined and recently used formatting styles that the user can apply to borders.

borrowed time (n)~ A limited amount of usage time provided after all purchased time has been expended. If the user does not add or download more usage time within this remaining amount of time, they will lose access to the computer.

borrowed usage time (n)~ A limited amount of usage time provided after all purchased time has been expended. If the user does not add or download more usage time within this remaining amount of time, they will lose access to the computer.

bot (n)~ A program that performs a task on a network, especially a task that is repetitive or time-consuming.

Bot ~ (roBOT)- An automated program, usually performing a function on the internet