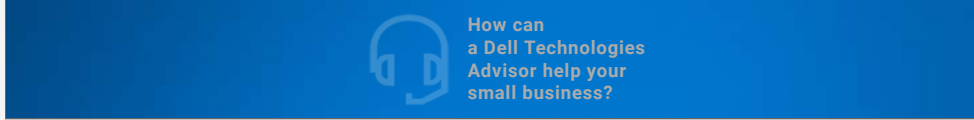


Surface Pro 7 deal! [Save big at Amazon right now](#)



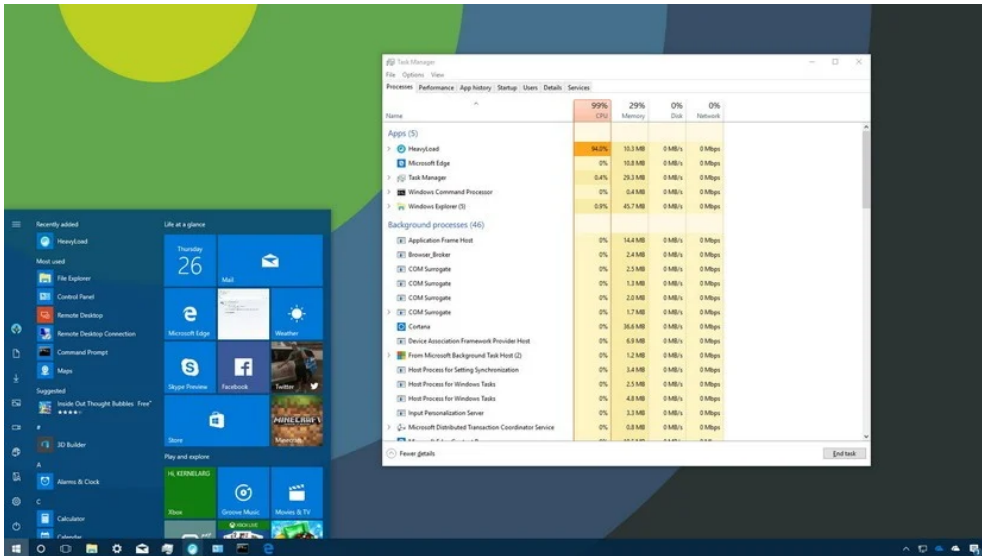
WINDOWS 10 TROUBLESHOOTING

How to use Windows 10 Task Manager to kill processes that drain resources

If your PC is slowing down or apps stop responding, this guide can help find and terminate the processes that are causing the problem, using Task Manager on Windows 10.

MAURO HUCULAK 27 Jan 2017

26



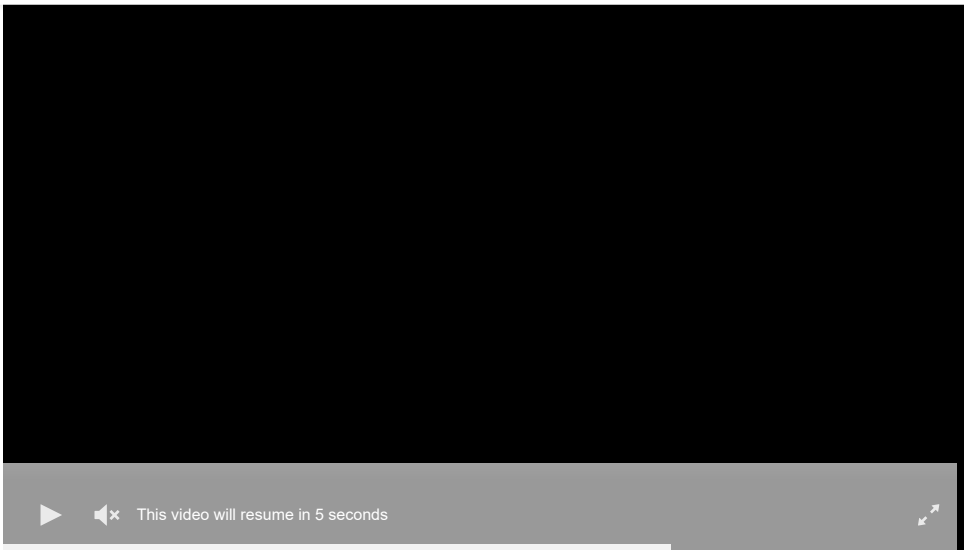
The Task Manager is an advanced [tool](#) that comes with [Windows 10](#), and it provides a number of tabs that allow you to monitor the applications, processes and [services](#) running on your computer. However, you'll likely find yourself using the Processes tab more than anything else, because it lets you quickly see how system resources are utilized, which can be very helpful when trying to troubleshoot applications or find out why your computer is suddenly slow.

In this [Windows 10 guide](#), we'll walk you through the steps to use Task Manager to identify and stop processes that use excessive [system resources](#), to keep your computer at top speeds.

How to use Task Manager to manage high-resource processes

Opening Task Manager



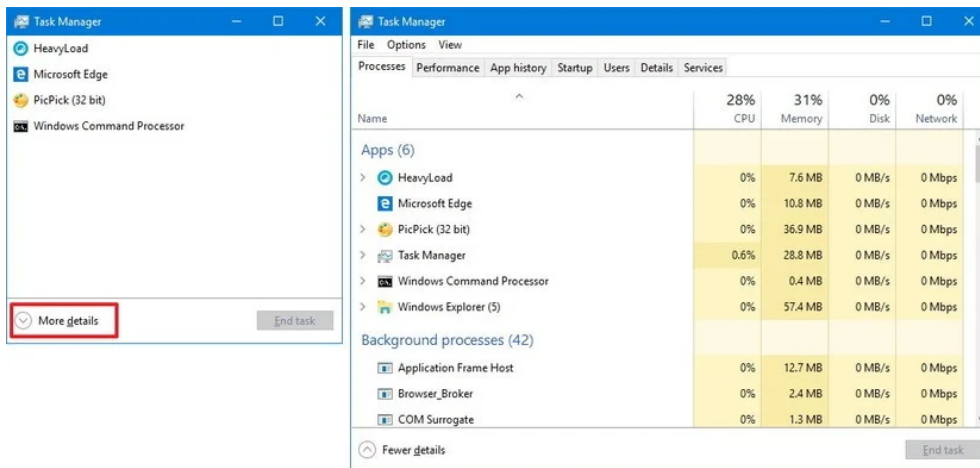


VPN Deals: Lifetime license for \$16, monthly plans at \$1 & more

Don't miss out

- Right-click the **Taskbar** and click on **Task Manager**.
- Open **Start**, do a search for **Task Manager** and click the result.
- Use the **Ctrl + Shift + Esc** keyboard shortcut.
- Use the **Ctrl + Alt + Del** keyboard shortcut and click on **Task Manager**.
- Use the **Windows key + X** keyboard shortcut to open the power-user menu and click on **Task Manager**.

If this is your first time opening Task Manager, the tool will probably open in [compact](#) mode, which only lists running applications. Click the **More details** button to access Task Manager in [advanced](#) mode.



Task Manager compact mode (left), Task Manager advanced mode (right)

Understanding the Processes tab

When you're in advanced mode, you'll see a number of tabs, including "Performance", "App history", "Startup", "Users", "Details", "Services", and the one we're interested in, the "Processes" tab. Typically, the Processes tab is the first place you want to go to determine which process is draining your computer's resources. This tab lists all the running processes

✖ a single view group



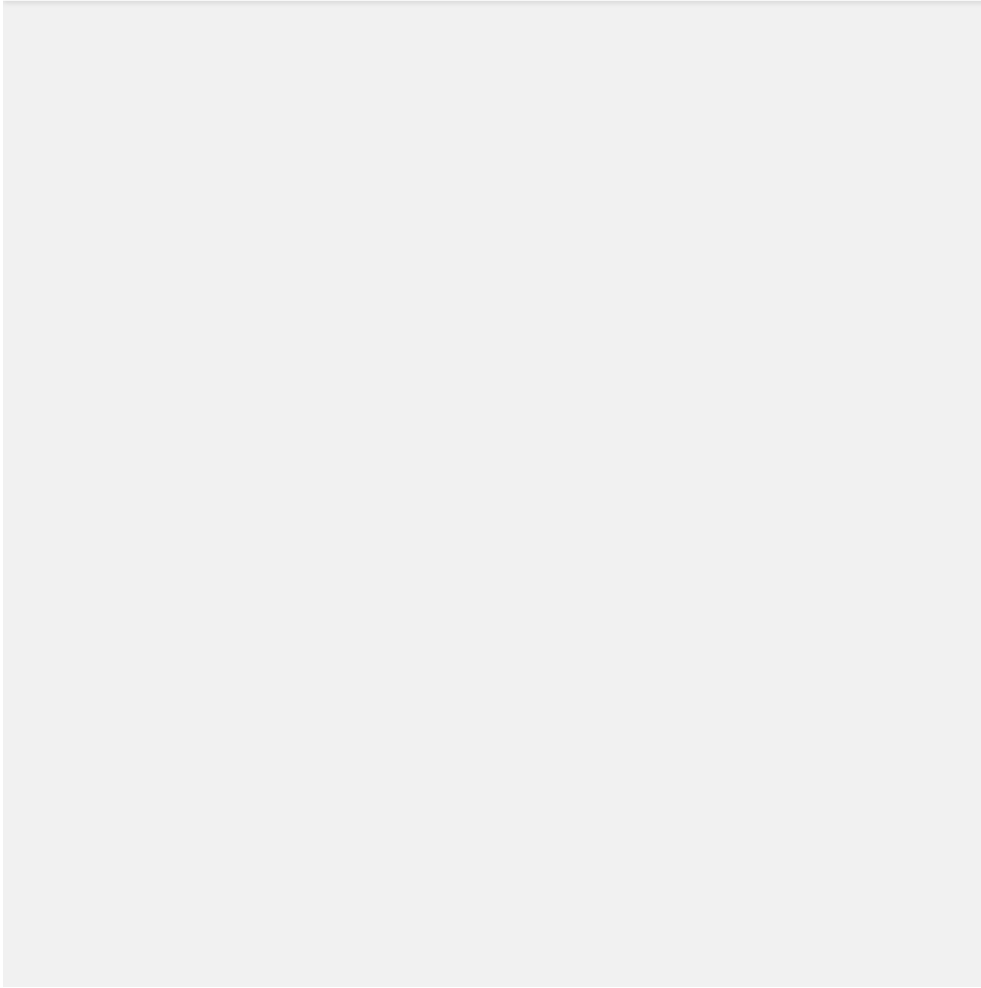
which helps you to better understand how they're organized and how they use system resources.

Name	CPU	Memory	Disk	Network
Apps (6)				
HeavyLoad	0%	7.6 MB	0 MB/s	0 Mbps
Microsoft Edge	0%	10.8 MB	0 MB/s	0 Mbps
PicPick (32 bit)	0%	56.7 MB	0 MB/s	0 Mbps
Task Manager	0.5%	29.7 MB	0 MB/s	0 Mbps
Windows Command Processor	0%	0.4 MB	0 MB/s	0 Mbps
Windows Explorer (5)				
Between PCs				
Between PCs				
HomeGroup				
picpick_portable				
View and print your homegroup password				
Background processes (44)				
Application Frame Host	0%	12.7 MB	0 MB/s	0 Mbps
Browser_Broker	0%	2.4 MB	0 MB/s	0 Mbps

You can always expand a group to see all the processes by clicking the **chevron-right icon** or by right-clicking the item and selecting **Expand**. Usually, you'll see groups for Windows processes when opening multiple tabs on your web browser or multiple File Explorer windows, for example.

Identifying processes with high-resource usage

If an application is not responding, a website is taking a long time to load, or your system fan starts getting loud, you can quickly use Task Manager to troubleshoot the problem. In the Processes tab, the first thing you want to look at is the percentage of the total resource use for the processor, memory, hard drive and network. You can click the column names to sort the list and bring to the top the ones using the most resources. If you see any of these resources running high (90 percent or higher), you might have found the problem.



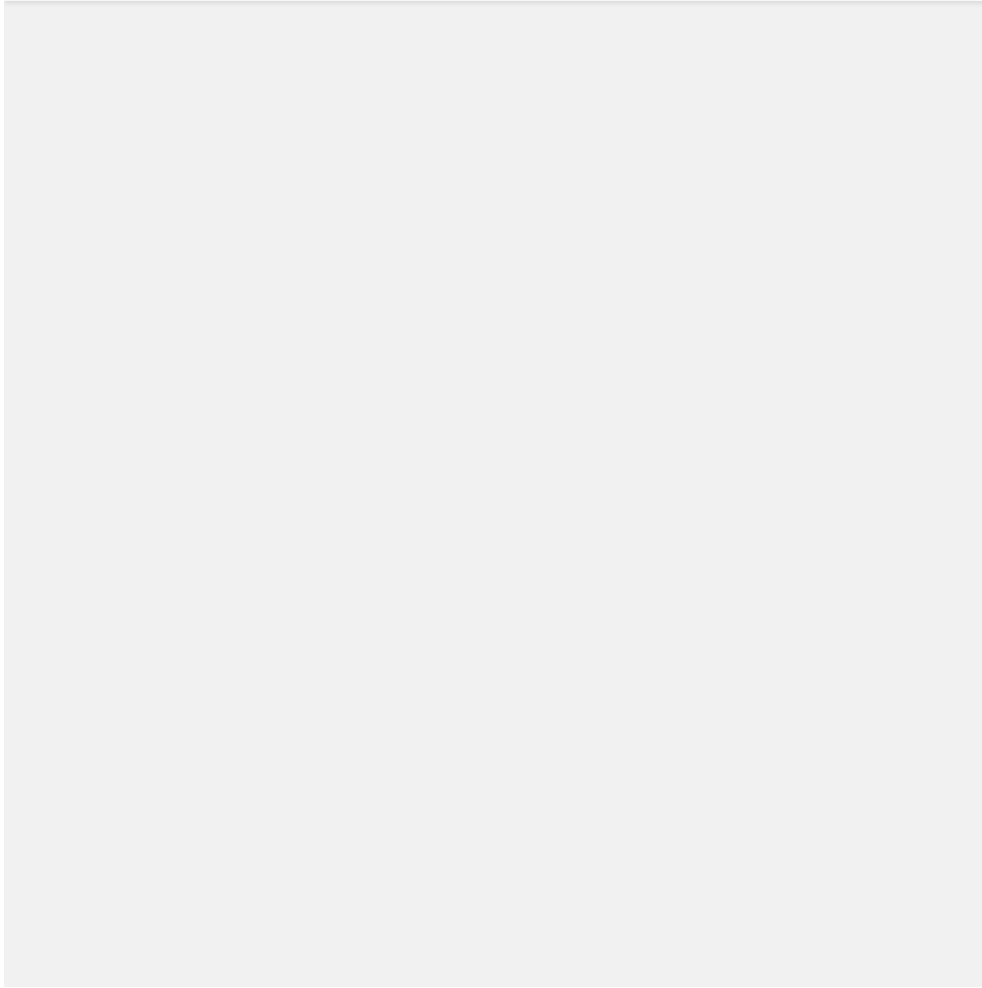
Task Manager also uses colors to highlight processes that use the most resources. You'll notice that as a process starts to consume more resources, the color begins to change from a light- to a dark-shade of orange, making it easier to tell which one is causing the problem.

Typically, when you're not actively using applications and your computer isn't working on anything specific, such as maintenance, your total CPU usage should be less than **30 percent**. Applications that are running, even if you're not using them, and processes use part of your computer's memory, and that usage will increase as you use or launch more applications. Memory usually won't be an issue unless you run out of it, in which case your computer will start using virtual memory, and that can cause your PC to slow down. Generally speaking, depending on your system configuration, your total memory usage should be below **60 percent**. If you're not copying files or rendering videos, disk usage should be below **5 percent**.

Network connectivity is almost never the reason your system is slow, but there could be a problem in the network causing web content to take a long time to load. If you're having problems downloading files, and you see "Network" stuck at **0 percent**, you may have an idea of what's going on.

Stopping processes with high-resource usage

After you identify the problem, right-click the process, and select **End task** to terminate it. Alternatively, you can simply select the item and click the **End task** button in the bottom-right corner.



While stopping a process using the Task Manager will most likely stabilize your computer, ending a process can completely close an application or crash your computer, and you could lose any unsaved data. It's always recommended to save your data before killing a process, if possible.

If you're not sure about how the process you're trying to terminate affects your PC, you can right-click it, and select the **Search online** option. This action opens your web browser and displays a search result with more information about the process. Windows 10 is also smart enough to let you know if you're about to end an essential system process that can crash your computer.

Explore Litigation Insights

Docket Alarm provides insights to develop a more informed litigation strategy and the peace of mind of knowing you're on top of things.

Real-Time Litigation Alerts



Keep your litigation team up-to-date with **real-time alerts** and advanced team management tools built for the enterprise, all while greatly reducing PACER spend.

Our comprehensive service means we can handle Federal, State, and Administrative courts across the country.

Advanced Docket Research



With over 230 million records, Docket Alarm's cloud-native docket research platform finds what other services can't. Coverage includes Federal, State, plus PTAB, TTAB, ITC and NLRB decisions, all in one place.

Identify arguments that have been successful in the past with full text, pinpoint searching. Link to case law cited within any court document via Fastcase.

Analytics At Your Fingertips



Learn what happened the last time a particular judge, opposing counsel or company faced cases similar to yours.

Advanced out-of-the-box PTAB and TTAB analytics are always at your fingertips.

API

Docket Alarm offers a powerful API (application programming interface) to developers that want to integrate case filings into their apps.

LAW FIRMS

Build custom dashboards for your attorneys and clients with live data direct from the court.

Automate many repetitive legal tasks like conflict checks, document management, and marketing.

FINANCIAL INSTITUTIONS

Litigation and bankruptcy checks for companies and debtors.

E-DISCOVERY AND LEGAL VENDORS

Sync your system to PACER to automate legal marketing.