

- [54] **FLASH SOLID STATE DRIVE THAT EMULATES A DISK DRIVE AND STORES VARIABLE LENGTH AND FIXED LENGTH DATA BLOCKS**
- [75] Inventors: **Donald W. Clay**, Louisville; **Steven A. Anderson**, Loveland, both of Colo.
- [73] Assignee: **Conner Peripherals, Inc.**, San Jose, Calif.
- [21] Appl. No.: **19,860**
- [22] Filed: **Feb. 19, 1993**
- [51] Int. Cl.⁶ **G06F 12/06; G06F 12/04**
- [52] U.S. Cl. **395/497.02; 371/37.1; 364/260.6; 364/260.7; 364/245.1; 364/DIG. 1; 395/442; 395/500**
- [58] **Field of Search** **395/425; 364/260.6, 364/260.7, 200 MS, 900 MS, 245.1; 371/37.1**

5,274,772	12/1993	Dunn et al.	395/275
5,285,327	2/1994	Hetzler	360/48
5,291,584	3/1994	Challa et al.	395/500
5,293,388	3/1994	Monroe et al.	371/37.1
5,293,565	3/1994	Jaquette et al.	369/32
5,301,304	4/1994	Menon	395/500
5,335,328	8/1994	Dunn et al.	395/275

OTHER PUBLICATIONS

"Flash Memory Challenges Disk Drives" by Gary Legg, EDN, Feb. 18, 1993.

Primary Examiner—Glenn Gossage
Assistant Examiner—Frank J. Asta
Attorney, Agent, or Firm—Fliesler, Dubb, Meyer & Lovejoy

[57] **ABSTRACT**

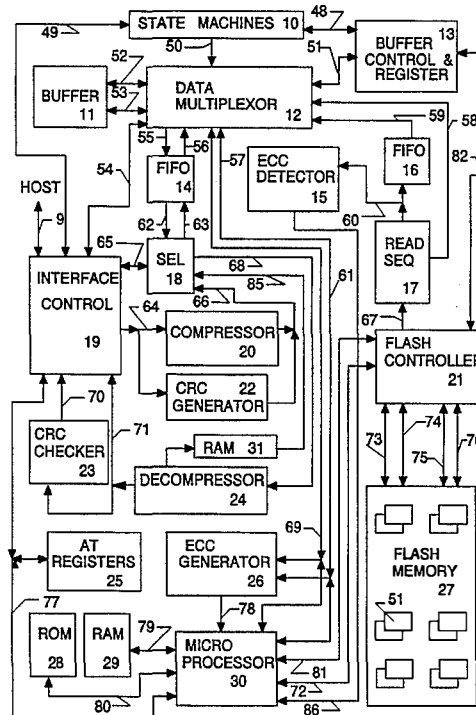
A flash solid state drive, having a flash solid state memory compatible with ATA/IDE Interface standards to be connected to a host for storing or retrieving sectors of data, where each sector contains 512 bytes of data, each sector is addressed by a cylinder, head and sector number CHS. The host provides, for a read or write operation, the number of sectors to be stored or retrieved, the CHS for each sector to be stored or retrieved and the data for the sectors to be stored. The solid state memory has stored therein a header for each CHS address that can be issued by the host, the header having indicia identifying the data block and indicating where the data for the data block is stored in the solid state memory. The flash solid state device comprises a translator means for translating the CHS address into a logic sector number LSN for identifying sectors in the flash solid state drive and a controller for converting sectors received from the host into variable length sectors to be stored in the flash solid state memory.

References Cited

U.S. PATENT DOCUMENTS

4,593,267	6/1986	Kuroda et al.	340/347
4,675,809	6/1987	Omoda et al.	395/400
4,947,319	8/1990	Bozman	395/700
4,958,315	9/1990	Balch	395/425
5,034,914	7/1991	Osterlund	395/425
5,070,474	12/1991	Tuma et al.	395/500
5,131,089	7/1992	Cole	395/500
5,166,686	11/1992	Sugiyama	341/155
5,170,263	12/1992	Hisatake et al.	358/426
5,206,939	4/1993	Yanai et al.	395/400
5,218,691	6/1993	Tuma et al.	395/500
5,237,460	8/1993	Miller et al.	360/8
5,237,675	8/1993	Hannon, Jr.	395/425

9 Claims, 9 Drawing Sheets



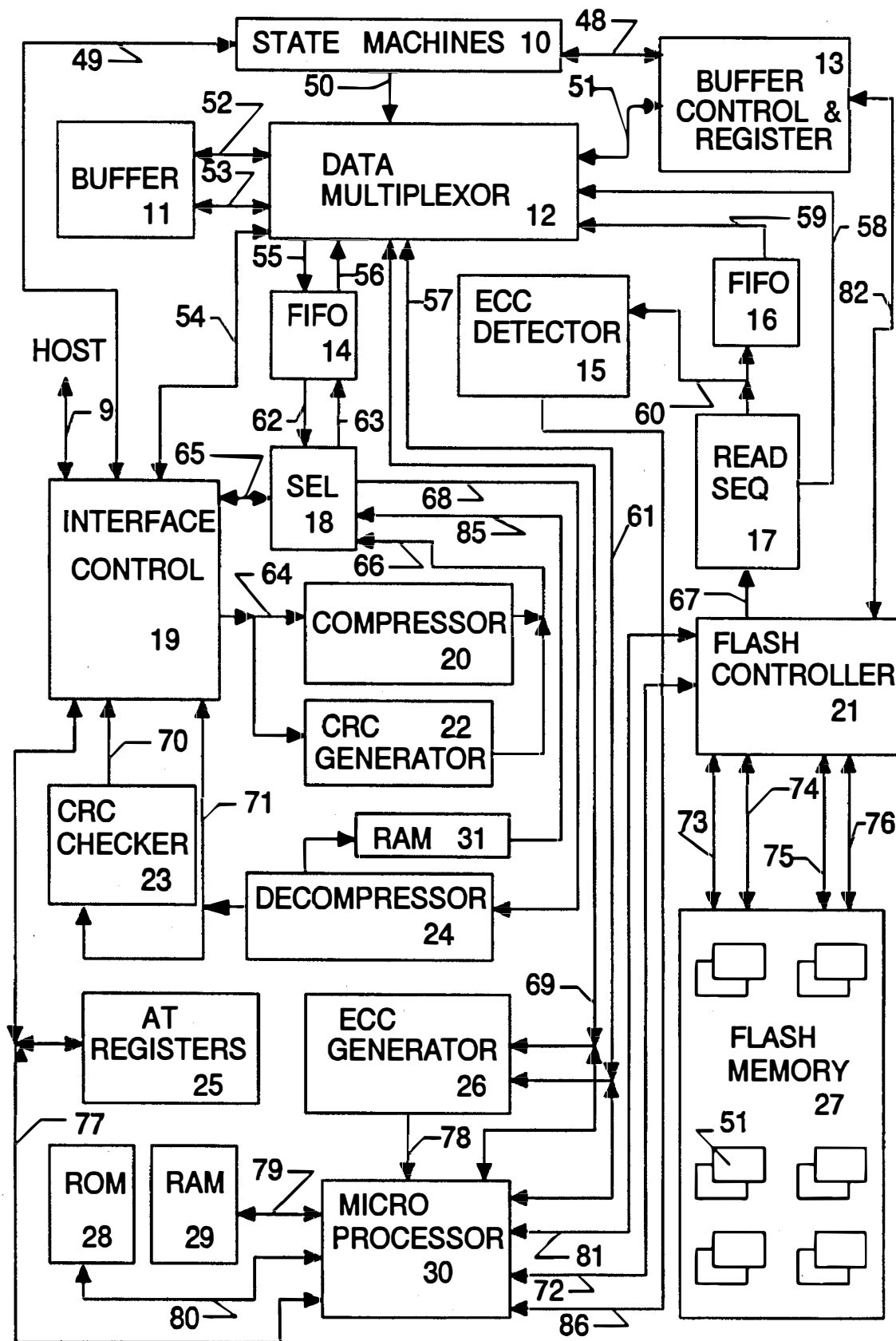


FIG. 1

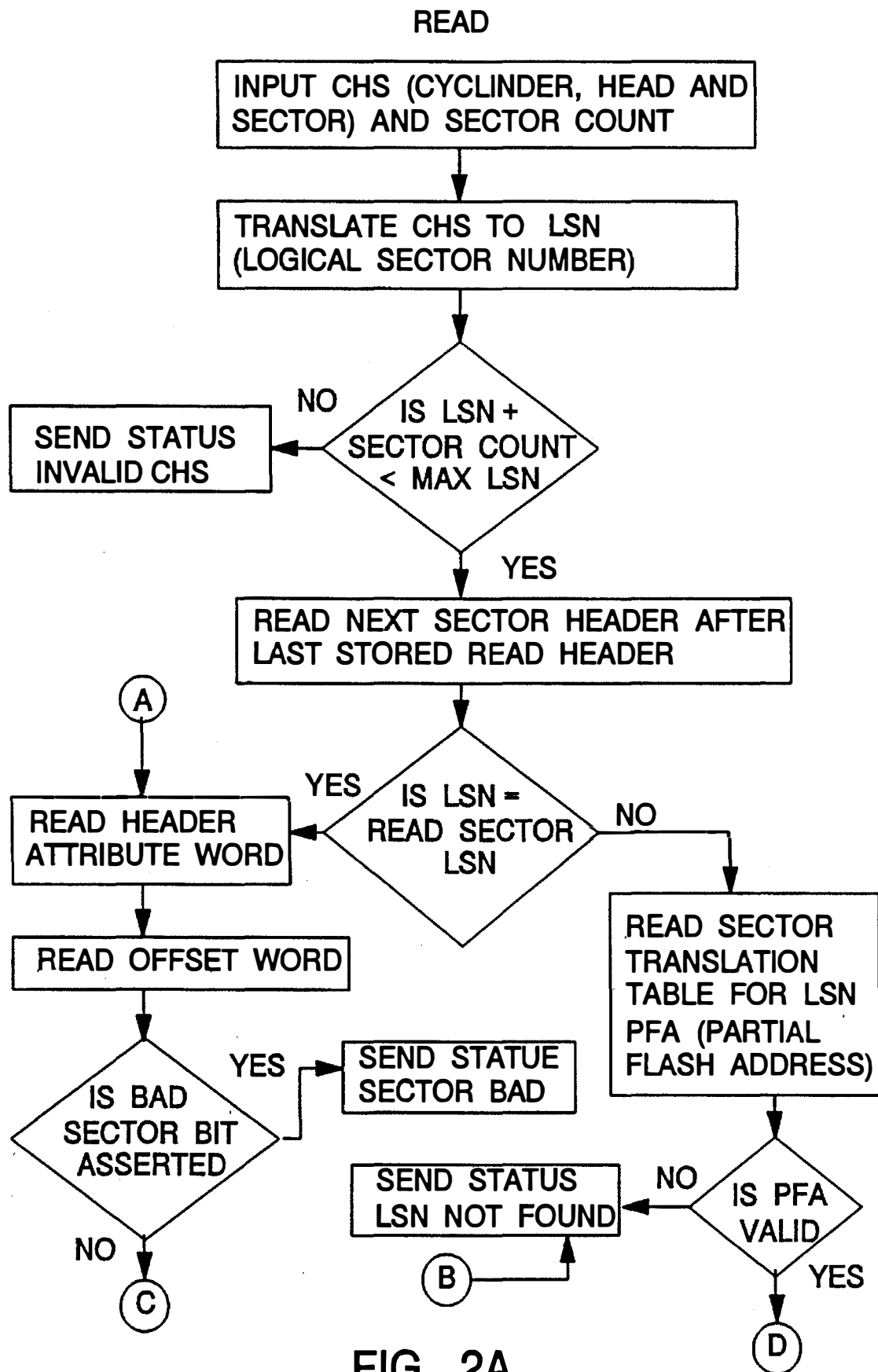


FIG. 2A

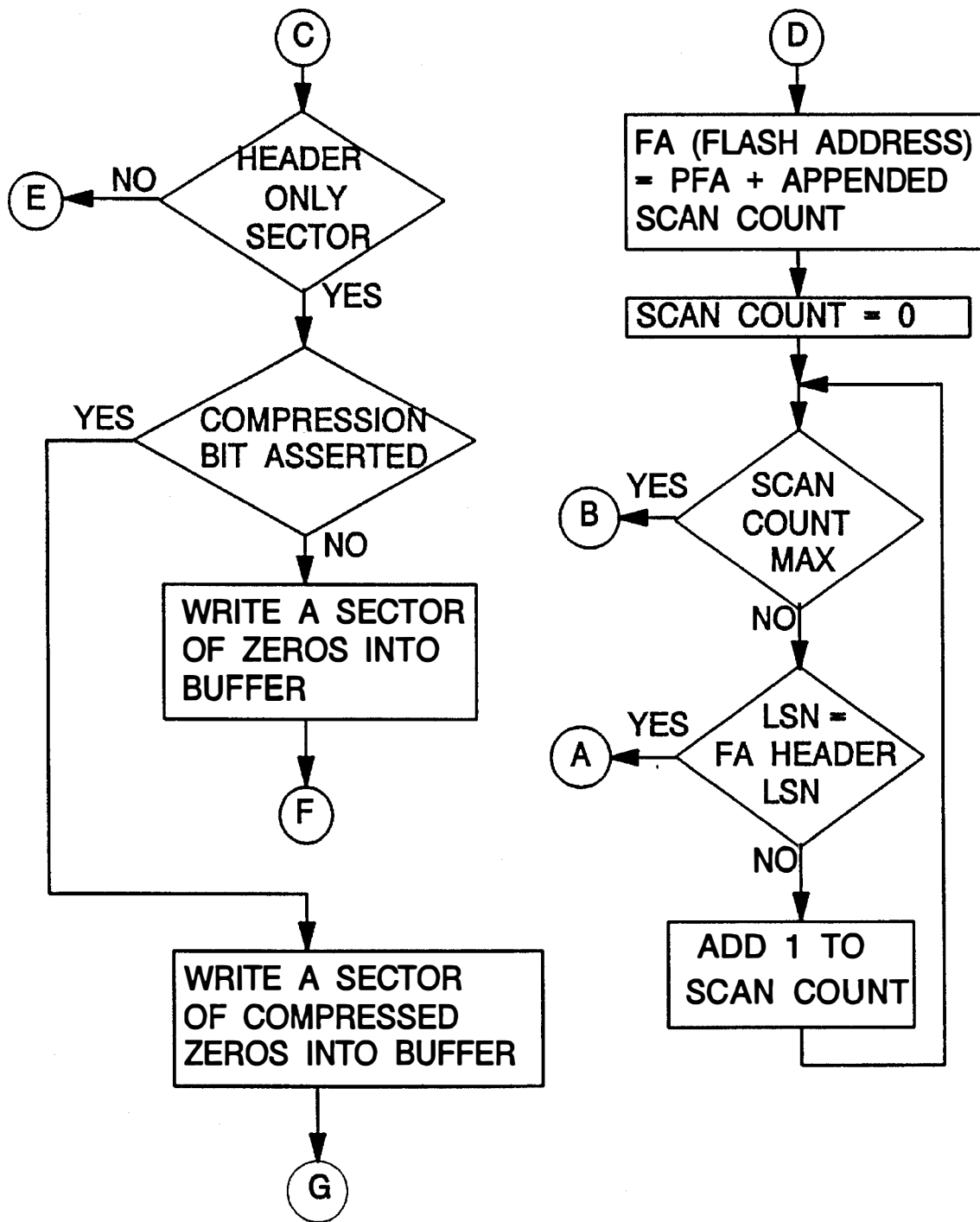


FIG. 2B

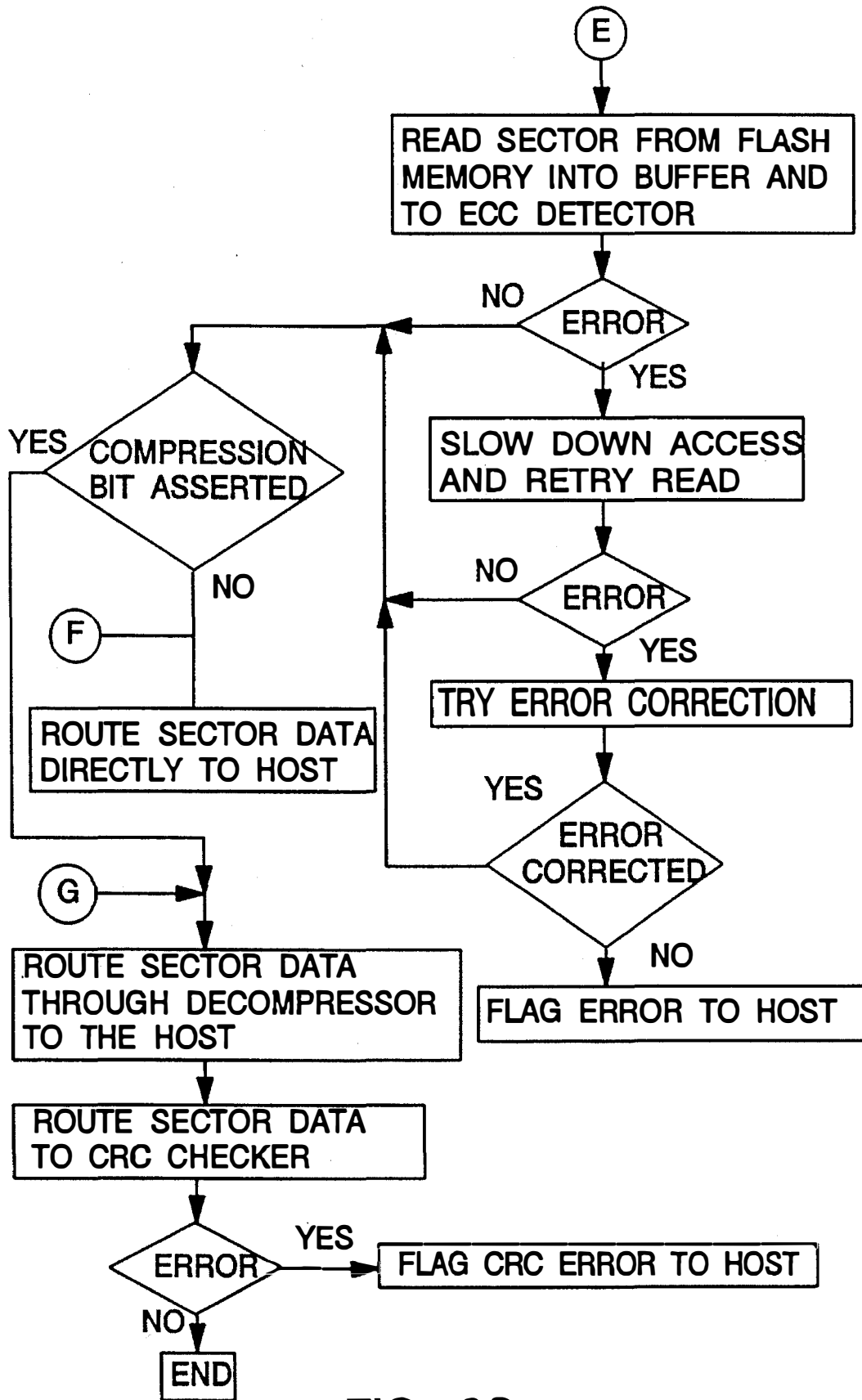


FIG. 2C

Explore Litigation Insights

Docket Alarm provides insights to develop a more informed litigation strategy and the peace of mind of knowing you're on top of things.

Real-Time Litigation Alerts



Keep your litigation team up-to-date with **real-time alerts** and advanced team management tools built for the enterprise, all while greatly reducing PACER spend.

Our comprehensive service means we can handle Federal, State, and Administrative courts across the country.

Advanced Docket Research



With over 230 million records, Docket Alarm's cloud-native docket research platform finds what other services can't. Coverage includes Federal, State, plus PTAB, TTAB, ITC and NLRB decisions, all in one place.

Identify arguments that have been successful in the past with full text, pinpoint searching. Link to case law cited within any court document via Fastcase.

Analytics At Your Fingertips



Learn what happened the last time a particular judge, opposing counsel or company faced cases similar to yours.

Advanced out-of-the-box PTAB and TTAB analytics are always at your fingertips.

API

Docket Alarm offers a powerful API (application programming interface) to developers that want to integrate case filings into their apps.

LAW FIRMS

Build custom dashboards for your attorneys and clients with live data direct from the court.

Automate many repetitive legal tasks like conflict checks, document management, and marketing.

FINANCIAL INSTITUTIONS

Litigation and bankruptcy checks for companies and debtors.

E-DISCOVERY AND LEGAL VENDORS

Sync your system to PACER to automate legal marketing.