



US006677965B1

(12) **United States Patent**  
Ullmann et al.

(10) **Patent No.:** **US 6,677,965 B1**  
(45) **Date of Patent:** **Jan. 13, 2004**

(54) **RUBBER BAND GRAPHICAL USER INTERFACE CONTROL**

(75) Inventors: **Cristi N. Ullmann**, Austin, TX (US);  
**Allen C. Wynn**, Round Rock, TX (US);  
**Michael W. Brown**, Georgetown, TX (US)

(73) Assignee: **International Business Machines Corporation**, Armonk, NY (US)

(\*) Notice: Subject to any disclaimer, the term of this patent is extended or adjusted under 35 U.S.C. 154(b) by 447 days.

(21) Appl. No.: **09/615,771**

(22) Filed: **Jul. 13, 2000**

(51) **Int. Cl.**<sup>7</sup> ..... **G09G 5/00**

(52) **U.S. Cl.** ..... **345/786; 345/787**

(58) **Field of Search** ..... 345/684, 688,  
345/784–787, 830, 973

(56) **References Cited**

#### U.S. PATENT DOCUMENTS

5,495,566 A	*	2/1996	Kwatinetz	345/785
5,508,717 A	*	4/1996	Miller	345/858
5,615,367 A	*	3/1997	Bennett et al.	707/102
5,634,095 A	*	5/1997	Wang et al.	345/763
5,664,128 A	*	9/1997	Bauer	345/708
5,721,847 A		2/1998	Johnson	395/333
5,790,115 A		8/1998	Pleyer et al.	345/327
5,838,326 A	*	11/1998	Card et al.	345/775

5,861,906 A	*	1/1999	Dunn et al.	725/87
5,963,191 A	*	10/1999	Jaaskelainen, Jr.	345/856
6,075,531 A	*	6/2000	DeStefano	345/788
6,104,400 A	*	8/2000	Halachmi et al.	345/854
6,282,547 B1	*	8/2001	Hirsch	707/102
6,480,211 B1	*	11/2002	Masri	345/857
6,483,509 B1	*	11/2002	Rabenhorst	345/442

#### OTHER PUBLICATIONS

Screen Dumps of Microsoft Publisher (pp. 1–4, 1999).\*

\* cited by examiner

*Primary Examiner*—Kristine Kincaid

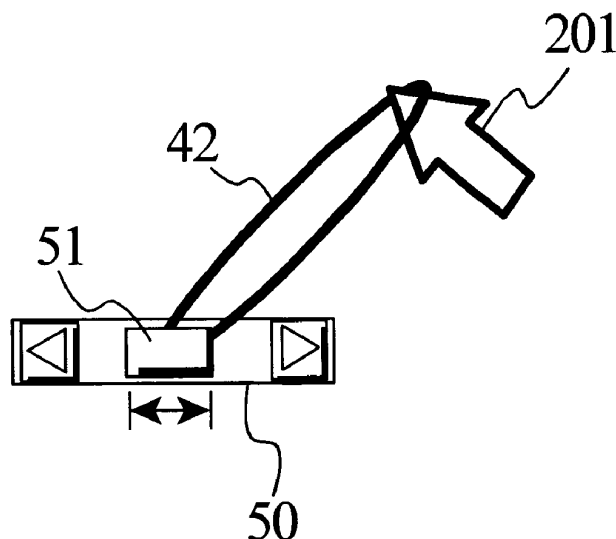
*Assistant Examiner*—Le Nguyen

(74) *Attorney, Agent, or Firm*—Robert H. Frantz; David A. Mims, Jr.

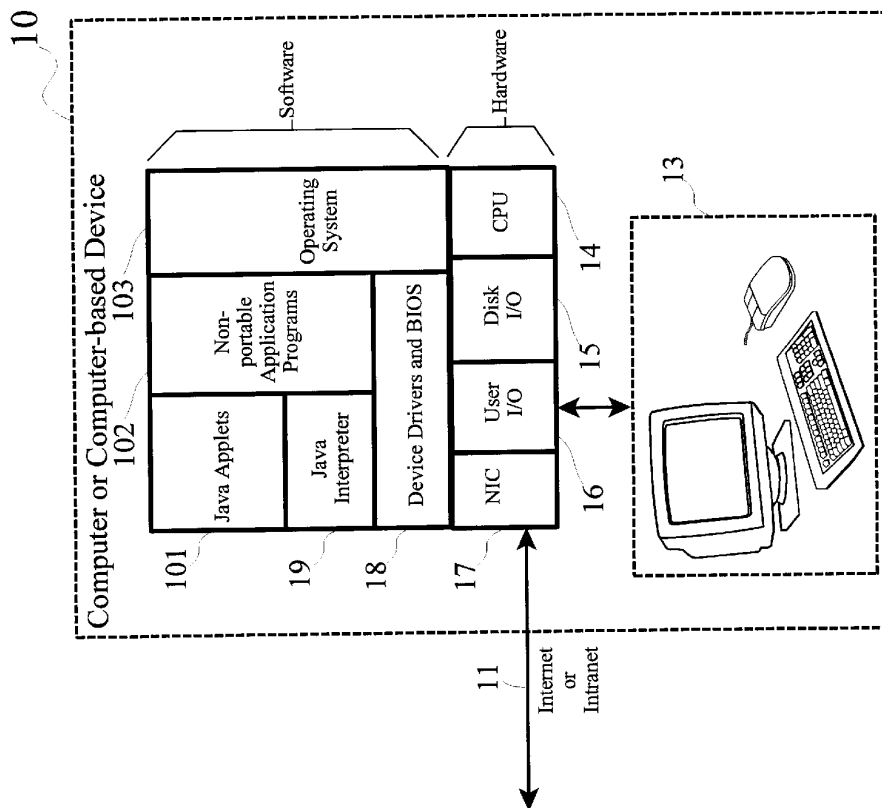
(57) **ABSTRACT**

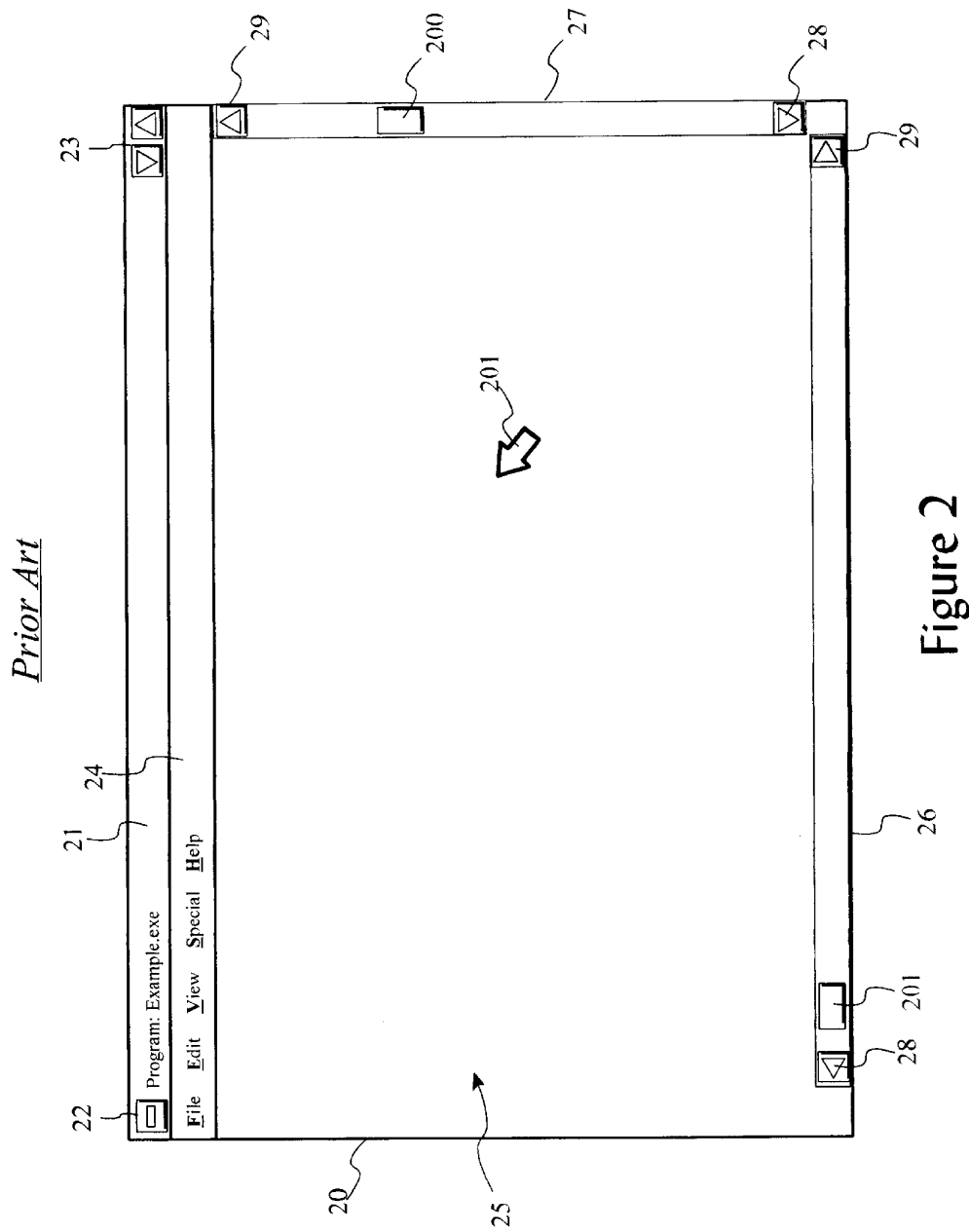
A rubber band variable-rate GUI control for use in conjunction with GUI controls, such as sliders, scroll bars, virtual joysticks, and oppositional buttons (up/down, left/right, plus/minus, next/previous, etc.). A user may place a pointer or cursor over a GUI control, select (e.g. click and hold a mouse button) and drag away from the control, and a virtual rubber band extending between the pointer and the GUI control is displayed. The further the user moves or “pulls” the pointer from the GUI control, the thinner and more elliptical the rubber band is displayed, and the faster the selections scrolls or the control operation is repeated. When the user moves the pointer closer to GUI control, the rubber band is displayed fatter and more circular in shape, and the scrolling or control operation repetition slows.

**30 Claims, 6 Drawing Sheets**

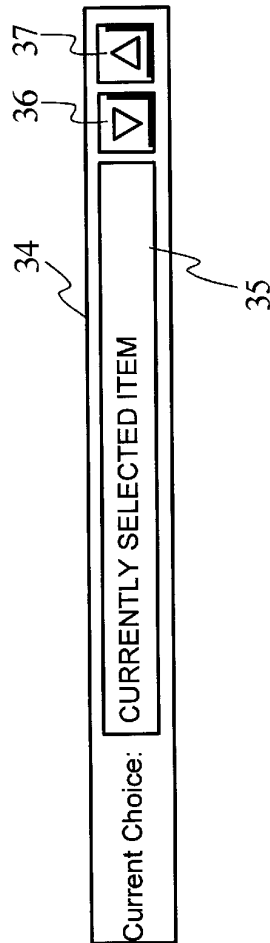


Prior Art



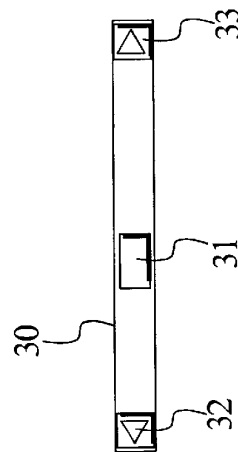


Prior Art

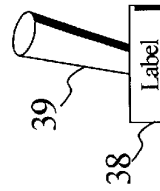


*Figure 3b*

Prior Art



*Figure 3a*



*Figure 3c*

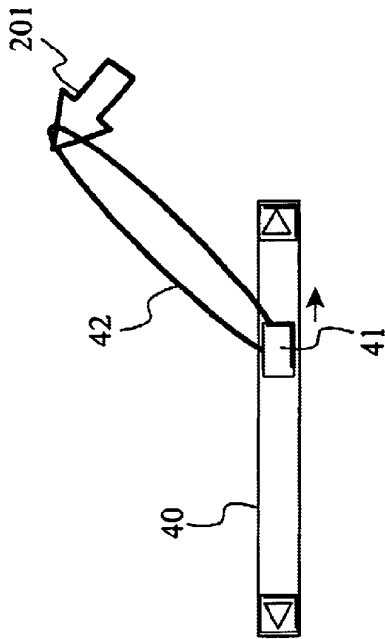


Figure 4b

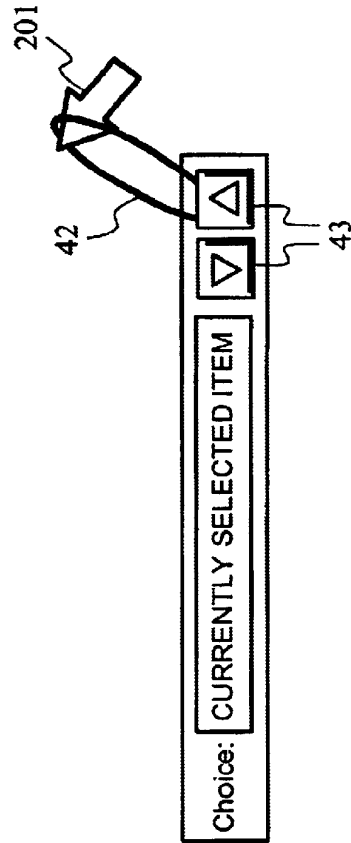


Figure 4d

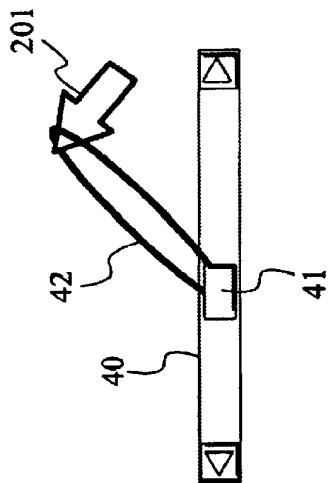


Figure 4a

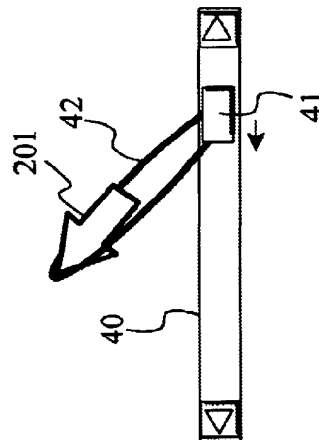


Figure 4c

# Explore Litigation Insights

Docket Alarm provides insights to develop a more informed litigation strategy and the peace of mind of knowing you're on top of things.

## Real-Time Litigation Alerts



Keep your litigation team up-to-date with **real-time alerts** and advanced team management tools built for the enterprise, all while greatly reducing PACER spend.

Our comprehensive service means we can handle Federal, State, and Administrative courts across the country.

## Advanced Docket Research



With over 230 million records, Docket Alarm's cloud-native docket research platform finds what other services can't. Coverage includes Federal, State, plus PTAB, TTAB, ITC and NLRB decisions, all in one place.

Identify arguments that have been successful in the past with full text, pinpoint searching. Link to case law cited within any court document via Fastcase.

## Analytics At Your Fingertips



Learn what happened the last time a particular judge, opposing counsel or company faced cases similar to yours.

Advanced out-of-the-box PTAB and TTAB analytics are always at your fingertips.

## API

Docket Alarm offers a powerful API (application programming interface) to developers that want to integrate case filings into their apps.

## LAW FIRMS

Build custom dashboards for your attorneys and clients with live data direct from the court.

Automate many repetitive legal tasks like conflict checks, document management, and marketing.

## FINANCIAL INSTITUTIONS

Litigation and bankruptcy checks for companies and debtors.

## E-DISCOVERY AND LEGAL VENDORS

Sync your system to PACER to automate legal marketing.