



US006680675B1

(12) **United States Patent**  
**Suzuki**

(10) **Patent No.:** **US 6,680,675 B1**  
(45) **Date of Patent:** **Jan. 20, 2004**

(54) **INTERACTIVE TO-DO LIST ITEM  
NOTIFICATION SYSTEM INCLUDING GPS  
INTERFACE**

(75) Inventor: **Hikaru Suzuki**, Gunma-machi (JP)

(73) Assignee: **Fujitsu Limited**, Kanagawa (JP)

(\*) Notice: Subject to any disclaimer, the term of this patent is extended or adjusted under 35 U.S.C. 154(b) by 380 days.

(21) Appl. No.: **09/598,094**

(22) Filed: **Jun. 21, 2000**

(51) Int. Cl.<sup>7</sup> ..... **G08G 1/123**

(52) U.S. Cl. .... **340/988**; 340/825.49; 455/456;  
455/457; 342/357.01; 342/357.17; 342/450;  
701/213; 701/300

(58) Field of Search ..... 340/988, 995,  
340/996, 825.49, 425.5; 701/207, 208, 201,  
211, 213, 214, 300; 455/456, 457; 342/357.01,  
357.17, 450, 357.06, 357.08, 357.13

(56) **References Cited**

#### U.S. PATENT DOCUMENTS

4,831,526 A	5/1989	Luchs et al. ....	364/401
5,111,391 A	5/1992	Fields et al. ....	364/401
5,182,705 A	1/1993	Barr et al. ....	364/401
5,557,515 A	9/1996	Abbruzzese et al. ....	364/401
5,559,548 A	9/1996	Davis et al. ....	348/6
5,644,722 A	7/1997	Miyamoto et al. ....	395/209
5,648,770 A *	7/1997	Ross ..... 340/988	
5,684,990 A *	11/1997	Boothby ..... 707/203	
5,826,260 A	10/1998	Byrd, Jr. et al. ....	707/5
5,844,558 A	12/1998	Kumar et al. ....	345/339
5,850,214 A *	12/1998	McNally et al. ....	345/173

5,948,041 A *	9/1999	Abo et al. ....	455/456
6,085,148 A *	7/2000	Jamison et al. ....	342/357.01
6,208,974 B1 *	3/2001	Campbell et al. ....	705/3
6,212,393 B1 *	4/2001	Suarez et al. ....	340/825.49
6,266,612 B1 *	7/2001	Dussell et al. ....	342/357.17
6,360,101 B1 *	3/2002	Irvin ..... 455/456	

\* cited by examiner

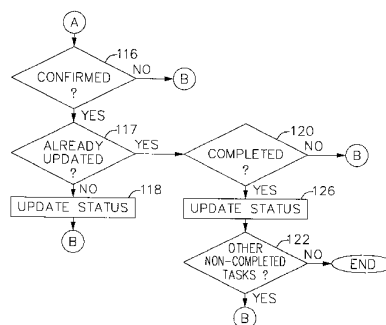
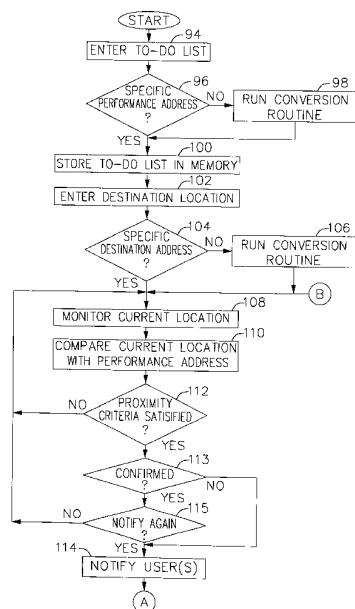
Primary Examiner—Daniel J. Wu

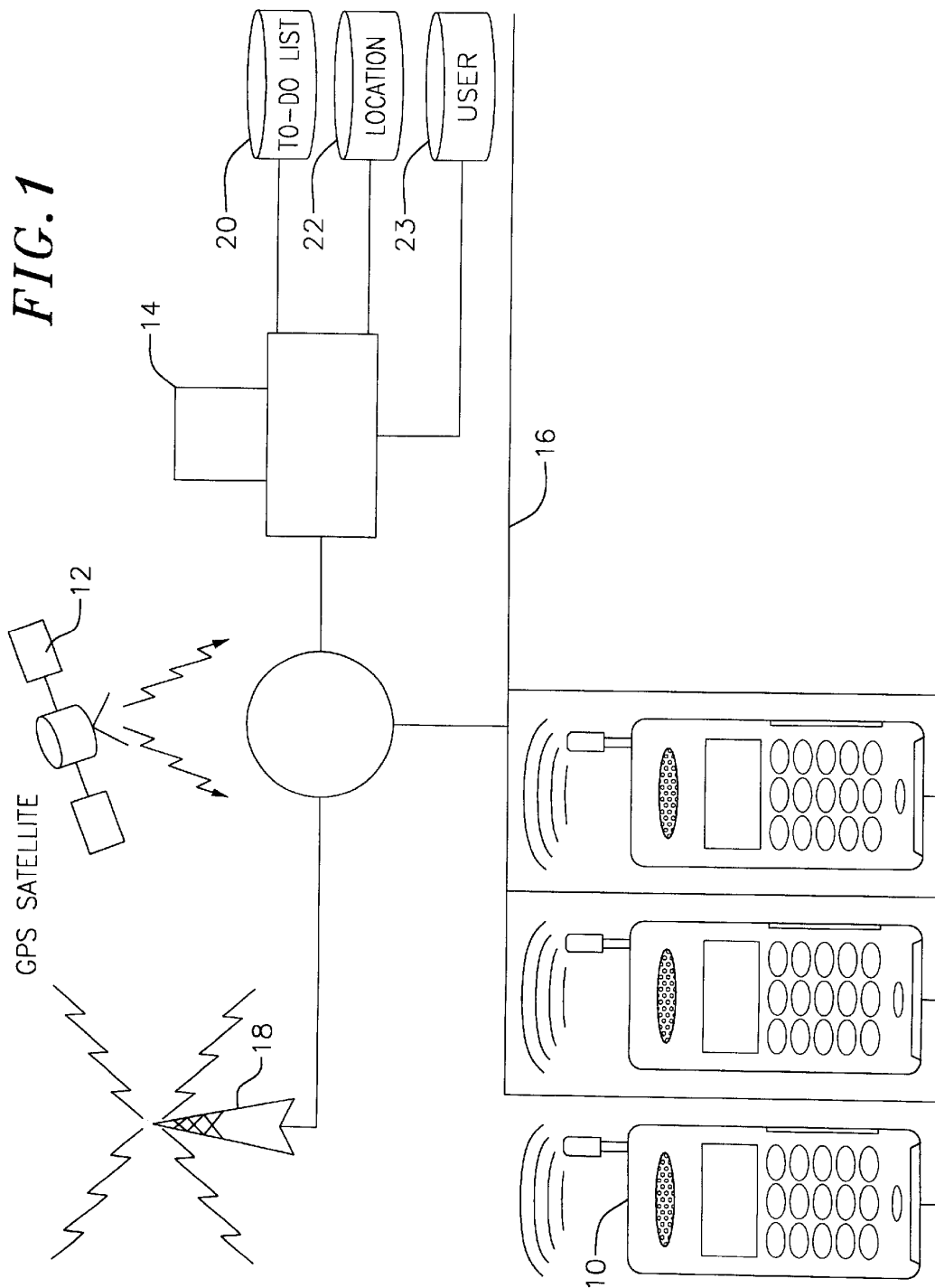
(74) Attorney, Agent, or Firm—Christie, Parker & Hale, LLP

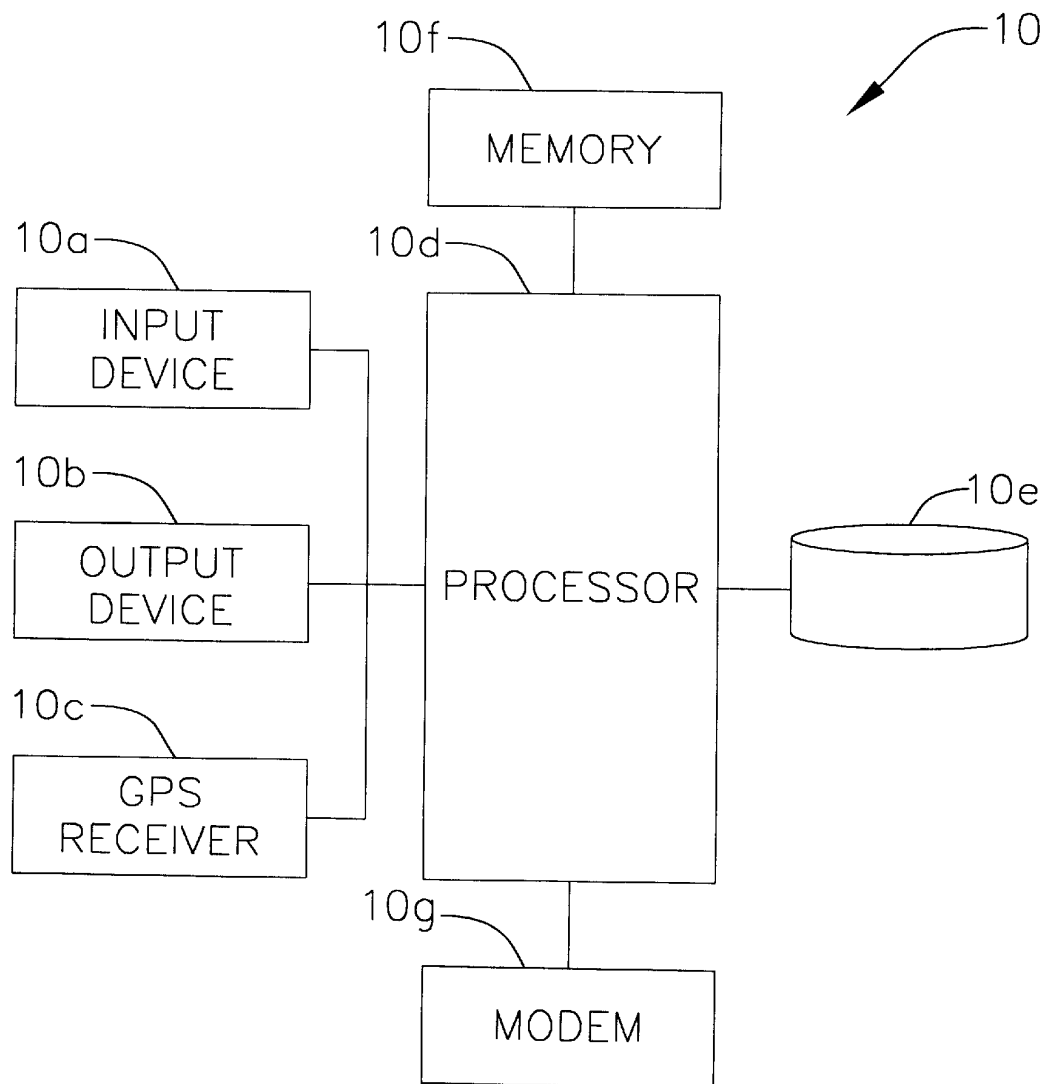
(57) **ABSTRACT**

A system and method for alerting a user of an item on a to-do list if the user is detected to be close to the item's performance location. Each to-do list item is entered to a mobile user terminal such as one that might be supported in an automobile. The mobile terminal includes a GPS interface that allows an automatic detection of the mobile terminal when the automobile is in motion. Using the GPS interface, the mobile terminal periodically compares the position of the user with various to-do list item locations to determine whether the user will pass within a pre-defined proximity metric of the listed item. Whenever a particular criteria is satisfied, the system provides a notification to the user of a potential to-do list item. In response to the notification, the user indicates that the user has accepted the notification by transmitting a "confirmed" status, or has completed the item by transmitting a "completed" status. A to-do list may be shared by multiple terminals for family or business use. In this case, to-do list items are identified specific user identifiers. Notifications and status flags for a particular user's to-do list item are shared among the multiple terminals to update the list once a particular item status has been "confirmed" or "completed."

**13 Claims, 9 Drawing Sheets**





*FIG. 2*

**FIG. 3**

TASK	LOCATION ENTERED	LOCATION ADDRESS	USER ID	STATUS
BUY ITEM X	AAA DISCOUNT STORE 111 MAIN STREET LOS ANGELES	111 MAIN STREET LOS ANGELES	001	CONFIRMED
BUY ITEM Y	BBB SUPERMARKET FIRST STREET	222 FIRST STREET LOS ANGELES	002,003	COMPLETED
PICK-UP DRY-CLEAN	CCC DRY-CLEANERS	333 STATE STREET LOS ANGELES	001	NOT NOTIFIED
• • •	• • •	• • •	• • •	• • •

30

**FIG. 4**

NAME	CITY	ADDRESS
AAA DISCOUNT STORE	BURBANK	222 UNION STREET
AAA DISCOUNT STORE	LOS ANGELES	111 MAIN STREET
BBB SUPERMARKET	LOS ANGELES	222 FIRST STREET
BBB SUPERMARKET	PASADENA	123 SECOND STREET
CCC DRY CLEANERS	LOS ANGELES	333 STATE STREET
• • •	• • •	• • •

# Explore Litigation Insights

Docket Alarm provides insights to develop a more informed litigation strategy and the peace of mind of knowing you're on top of things.

## Real-Time Litigation Alerts



Keep your litigation team up-to-date with **real-time alerts** and advanced team management tools built for the enterprise, all while greatly reducing PACER spend.

Our comprehensive service means we can handle Federal, State, and Administrative courts across the country.

## Advanced Docket Research



With over 230 million records, Docket Alarm's cloud-native docket research platform finds what other services can't. Coverage includes Federal, State, plus PTAB, TTAB, ITC and NLRB decisions, all in one place.

Identify arguments that have been successful in the past with full text, pinpoint searching. Link to case law cited within any court document via Fastcase.

## Analytics At Your Fingertips



Learn what happened the last time a particular judge, opposing counsel or company faced cases similar to yours.

Advanced out-of-the-box PTAB and TTAB analytics are always at your fingertips.

## API

Docket Alarm offers a powerful API (application programming interface) to developers that want to integrate case filings into their apps.

## LAW FIRMS

Build custom dashboards for your attorneys and clients with live data direct from the court.

Automate many repetitive legal tasks like conflict checks, document management, and marketing.

## FINANCIAL INSTITUTIONS

Litigation and bankruptcy checks for companies and debtors.

## E-DISCOVERY AND LEGAL VENDORS

Sync your system to PACER to automate legal marketing.