

(12) **United States Patent**
Reuss et al.

(10) **Patent No.:** **US 7,359,504 B1**
(45) **Date of Patent:** **Apr. 15, 2008**

- (54) **METHOD AND APPARATUS FOR REDUCING ECHO AND NOISE**
- (75) Inventors: **Edward L. Reuss**, Santa Cruz, CA (US); **William A. Weeks**, Santa Cruz, CA (US)
- (73) Assignee: **Plantronics, Inc.**, Santa Cruz, CA (US)
- (*) Notice: Subject to any disclaimer, the term of this patent is extended or adjusted under 35 U.S.C. 154(b) by 868 days.
- (21) Appl. No.: **10/309,695**
- (22) Filed: **Dec. 3, 2002**
- (51) **Int. Cl.**
H04M 9/08 (2006.01)
- (52) **U.S. Cl.** **379/406.02; 379/406.01**
- (58) **Field of Classification Search**
379/406.01-406.16
See application file for complete search history.

6,192,126 B1 2/2001 Koski
6,201,499 B1 3/2001 Hawkes et al.
6,236,862 B1* 5/2001 Erten et al. 455/501
6,243,471 B1 6/2001 Brandstein et al.
6,301,357 B1 10/2001 Romesburg
6,408,978 B1 6/2002 Premus
6,415,029 B1 7/2002 Piket et al.
6,420,975 B1 7/2002 DeLine et al.
6,707,912 B2* 3/2004 Stephens et al. 379/406.08

* cited by examiner

Primary Examiner—Curtis A Kuntz

Assistant Examiner—Alexander Jamal

(74) *Attorney, Agent, or Firm*—Intellectual Property Law Office of Thomas Chuang

(57) **ABSTRACT**

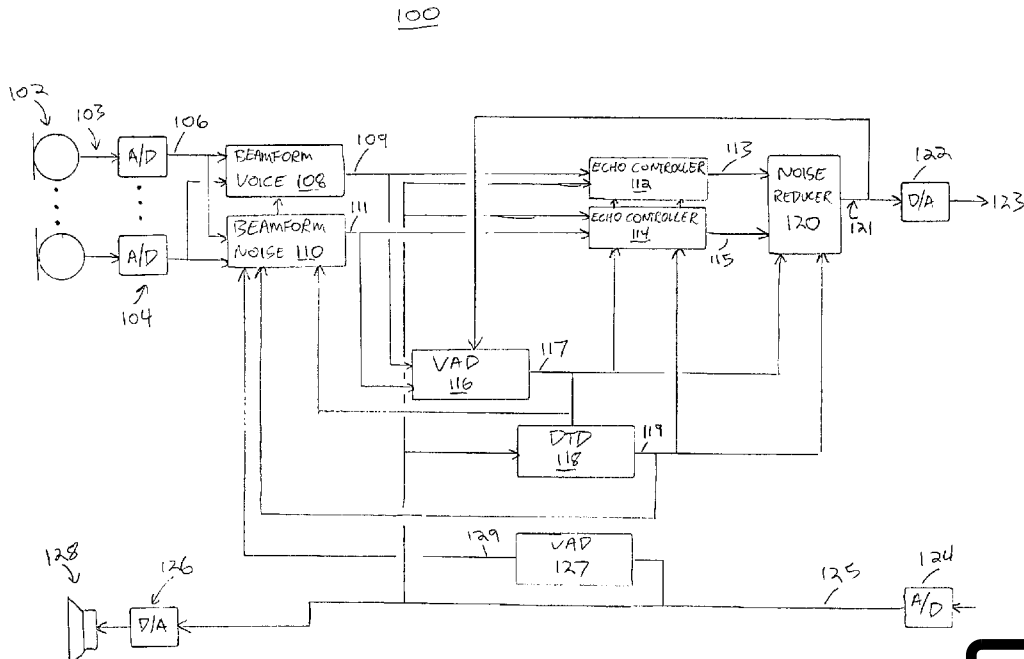
The present invention provides a solution to the needs described above through a method and apparatus for reducing echo and noise. The apparatus includes a microphone array for receiving an audio signal, the audio signal including a voice signal component and a noise signal component. The apparatus further includes a voice processing path having an input coupled to the microphone array and a noise processing path having an input coupled to the microphone array. The voice processing path is adapted to detect voice signals and the noise processing path is adapted to detect noise signals. A first echo controller is coupled to the voice processing path and a second echo controller is coupled to the noise processing path. A noise reducer is coupled to the output of the first echo controller and second echo controller.

24 Claims, 4 Drawing Sheets

(56) **References Cited**

U.S. PATENT DOCUMENTS

5,809,463 A * 9/1998 Gupta et al. 704/233
5,920,834 A 7/1999 Sih et al.
5,960,077 A * 9/1999 Ishii et al. 379/406.08
6,031,938 A * 2/2000 Kajiwara 382/239
6,035,034 A * 3/2000 Trump 379/406.06
6,061,023 A 5/2000 Daniel et al.
6,151,397 A 11/2000 Jackson, Jr. II et al.
6,178,248 B1 1/2001 Marash



IPR PETITION
US 0518 271

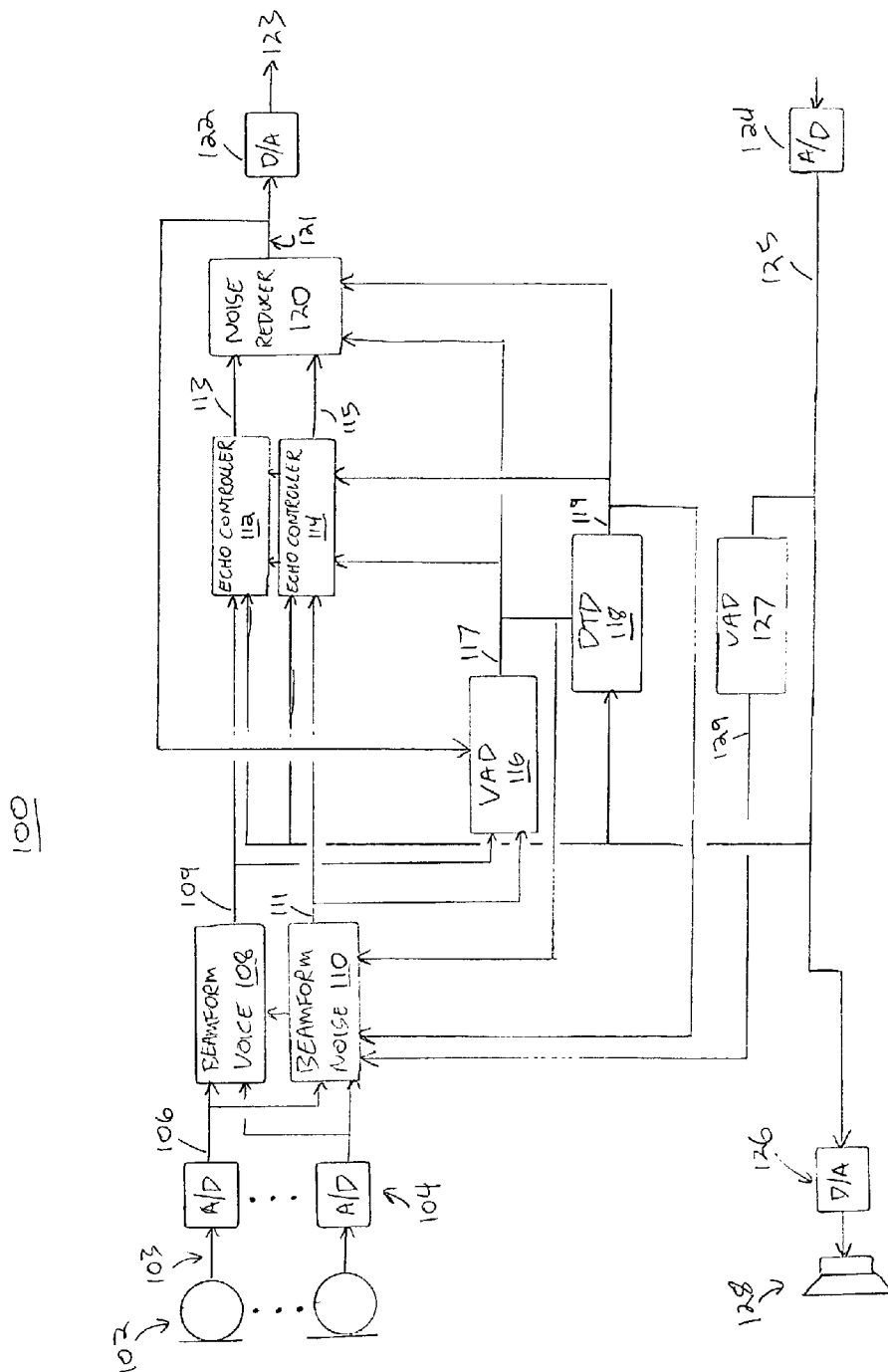


FIGURE 1

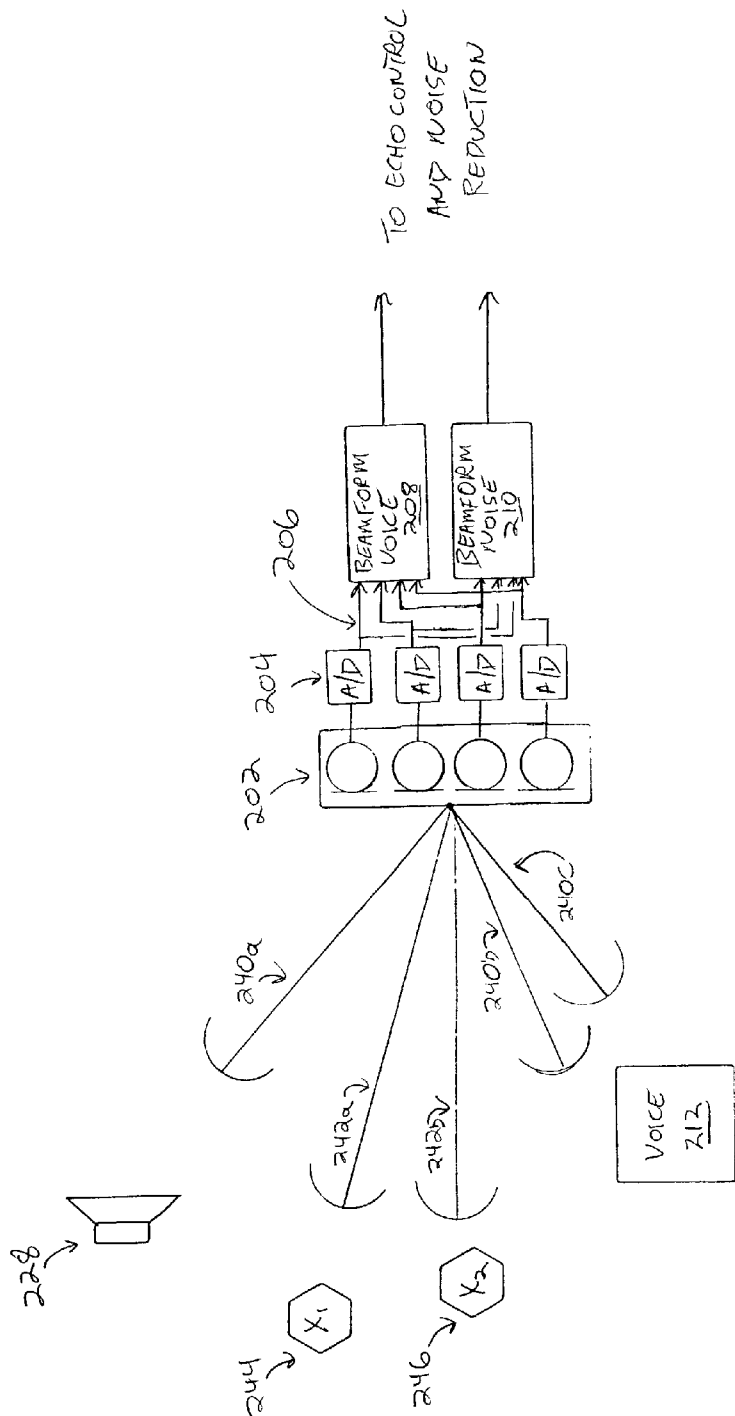


FIGURE 2

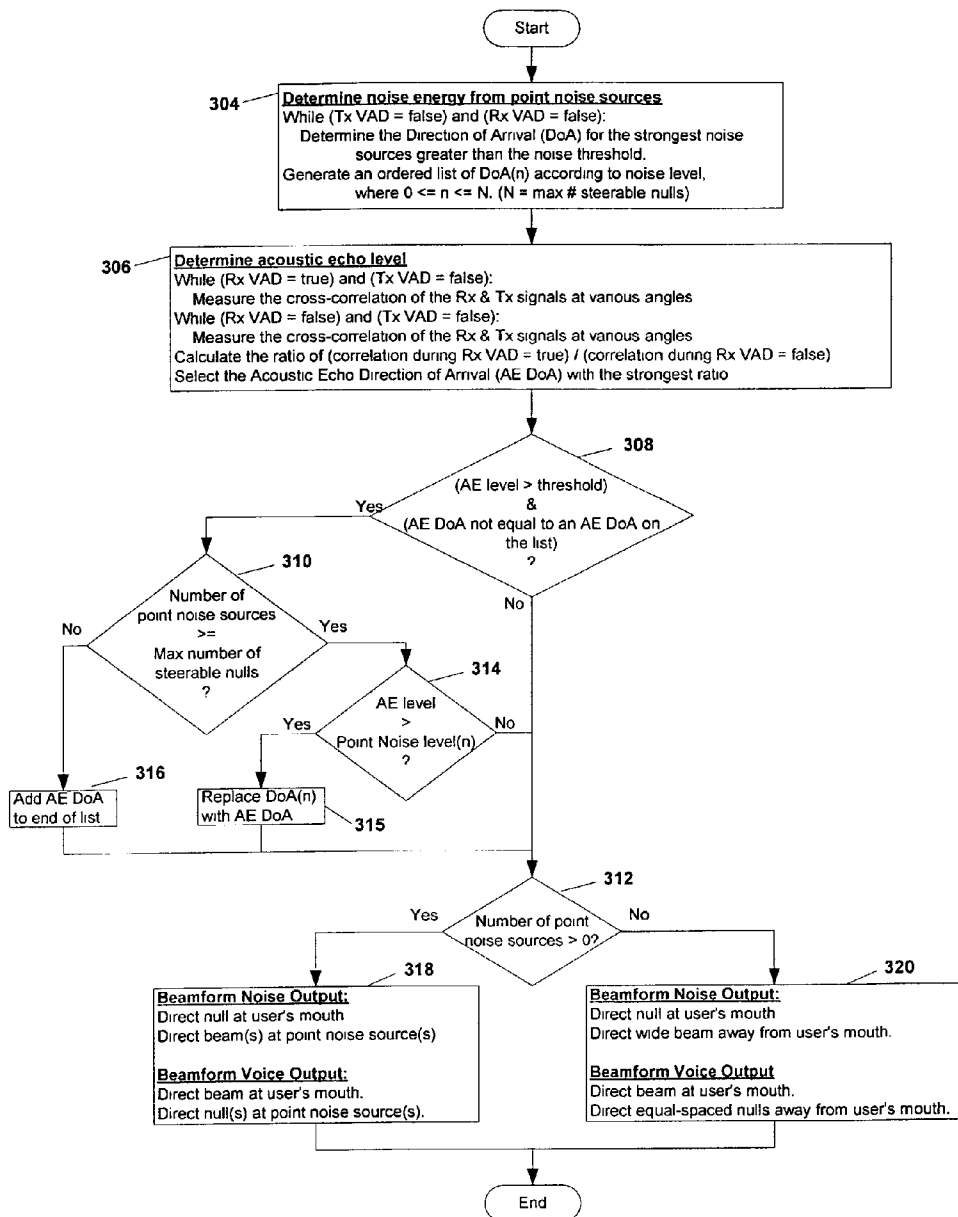


Figure 3

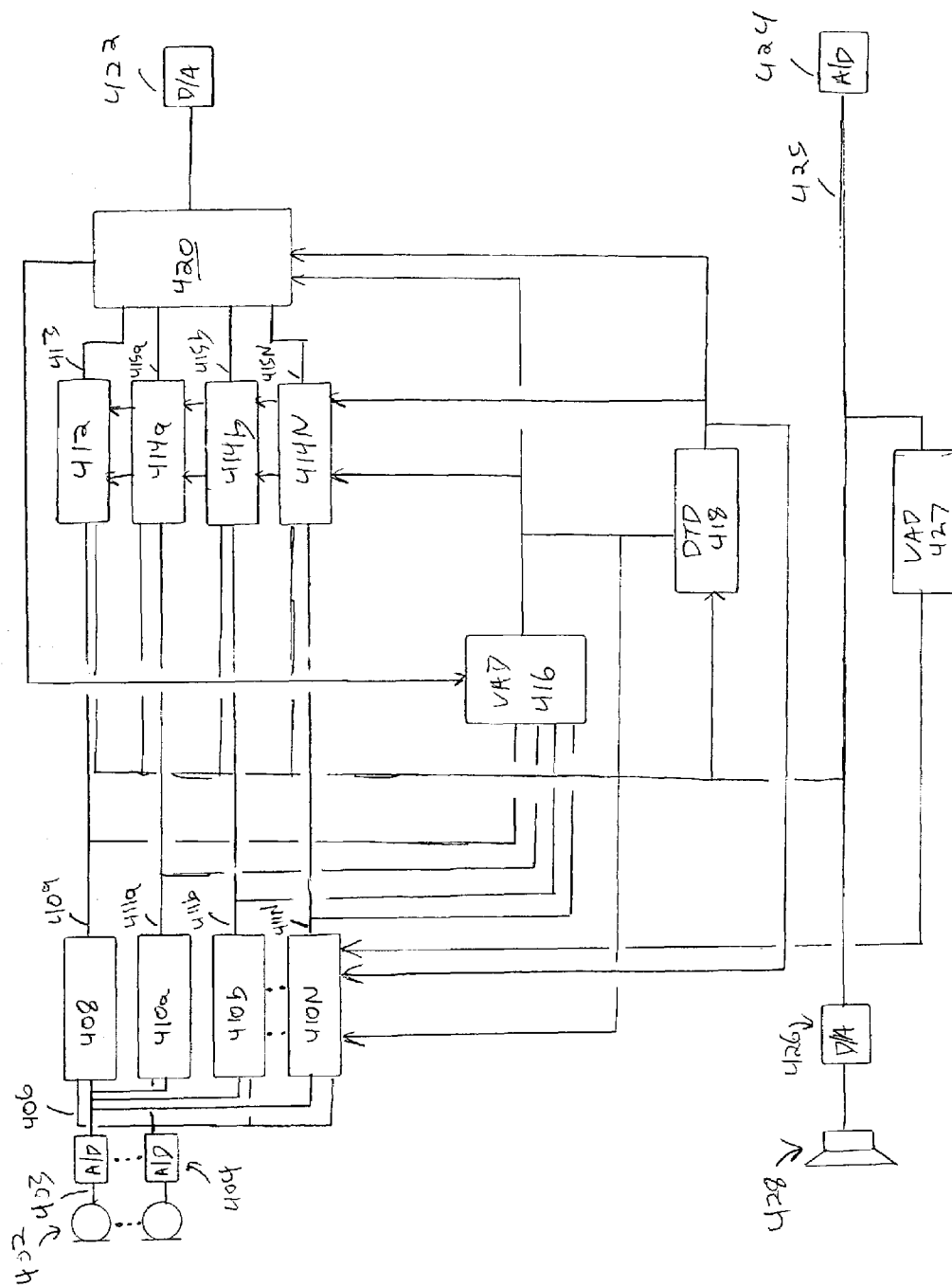


FIGURE 4

Explore Litigation Insights

Docket Alarm provides insights to develop a more informed litigation strategy and the peace of mind of knowing you're on top of things.

Real-Time Litigation Alerts



Keep your litigation team up-to-date with **real-time alerts** and advanced team management tools built for the enterprise, all while greatly reducing PACER spend.

Our comprehensive service means we can handle Federal, State, and Administrative courts across the country.

Advanced Docket Research



With over 230 million records, Docket Alarm's cloud-native docket research platform finds what other services can't. Coverage includes Federal, State, plus PTAB, TTAB, ITC and NLRB decisions, all in one place.

Identify arguments that have been successful in the past with full text, pinpoint searching. Link to case law cited within any court document via Fastcase.

Analytics At Your Fingertips



Learn what happened the last time a particular judge, opposing counsel or company faced cases similar to yours.

Advanced out-of-the-box PTAB and TTAB analytics are always at your fingertips.

API

Docket Alarm offers a powerful API (application programming interface) to developers that want to integrate case filings into their apps.

LAW FIRMS

Build custom dashboards for your attorneys and clients with live data direct from the court.

Automate many repetitive legal tasks like conflict checks, document management, and marketing.

FINANCIAL INSTITUTIONS

Litigation and bankruptcy checks for companies and debtors.

E-DISCOVERY AND LEGAL VENDORS

Sync your system to PACER to automate legal marketing.