



US006765616B1

(12) **United States Patent**  
**Nakano et al.**

(10) **Patent No.:** **US 6,765,616 B1**  
(45) **Date of Patent:** **Jul. 20, 2004**

(54) **ELECTRIC CAMERA**

(75) Inventors: **Takahiro Nakano**, Hitachinaka (JP);  
**Ryuji Nishimura**, Yokohama (JP);  
**Toshiro Kinugasa**, Hiratsuka (JP)

(73) Assignee: **Hitachi, Ltd.**, Tokyo (JP)

(\*) Notice: Subject to any disclaimer, the term of this patent is extended or adjusted under 35 U.S.C. 154(b) by 0 days.

(21) Appl. No.: **09/520,836**

(22) Filed: **Mar. 8, 2000**

(30) **Foreign Application Priority Data**

Jan. 11, 2000 (JP) ..... 2000-006064

(51) **Int. Cl.**<sup>7</sup> ..... **H04N 5/335**; H04N 9/083

(52) **U.S. Cl.** ..... **348/322**; 348/312; 348/273

(58) **Field of Search** ..... 348/322, 312, 348/317, 311, 294, 273, 262, 263, 319, 320, 222.1

(56) **References Cited**

**U.S. PATENT DOCUMENTS**

4,434,435	A	*	2/1984	Fujimoto	.....	348/277
4,910,599	A	*	3/1990	Hashimoto	.....	348/240.2
5,264,939	A	*	11/1993	Chang	.....	348/322
5,450,129	A	*	9/1995	Matoba et al.	.....	348/294
5,657,082	A	*	8/1997	Harada et al.	.....	348/262
5,668,597	A	*	9/1997	Parulski et al.	.....	348/350
5,986,698	A	*	11/1999	Nobuoka	.....	348/208.3
6,122,007	A	*	9/2000	Ishibashi	.....	348/231.6
6,181,375	B1	*	1/2001	Mitsui et al.	.....	348/240.99

6,529,236	B1	*	3/2003	Watanabe	.....	348/230.1
6,580,457	B1	*	6/2003	Armstrong et al.	.....	348/317
2001/0043276	A1	*	11/2001	Ueno	.....	348/322
2002/0118291	A1	*	8/2002	Ishigami et al.	.....	348/311

**FOREIGN PATENT DOCUMENTS**

EP	000840503	A2	*	6/1998
JP	11-187306		*	7/1999

\* cited by examiner

*Primary Examiner*—Aung Moe

(74) *Attorney, Agent, or Firm*—Antonelli, Terry, Stout & Kraus, LLP

(57) **ABSTRACT**

A photography related to video cameras, camcorders, digital still cameras and others using a solid-state image sensing device, and particularly an electric camera using a solid-state image sensing device with a large number of pixels. The use of an image sensing device with a sufficient number of pixels for still image photographing ensures good performance for the moving image photographing and for the monitoring of a static image photographing. The image sensing device used has an arbitrary number of vertically arranged pixels equal to or more than three times the number of effective scanning lines of the television system. During the moving image photographing and during the monitoring of a static image photographing, the pixels are cyclically mixed together or culled and desired television signals are generated by performing the signal reading processing during the vertical blanking periods and the interpolation processing. During the static image recording, signals of all pixels are read out independently and recorded.

**20 Claims, 8 Drawing Sheets**

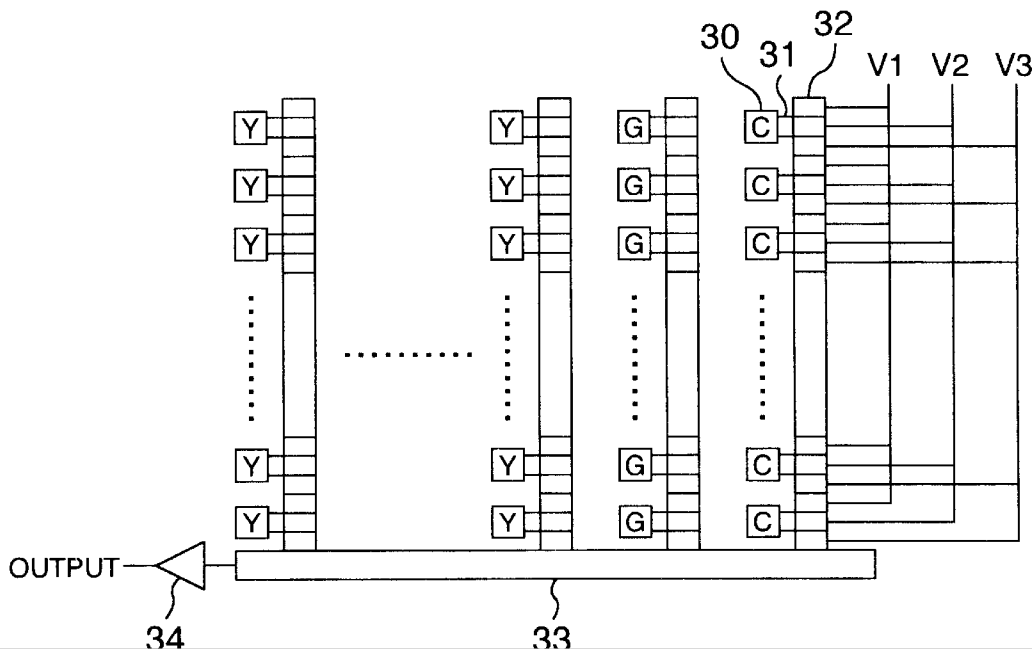


FIG. 1

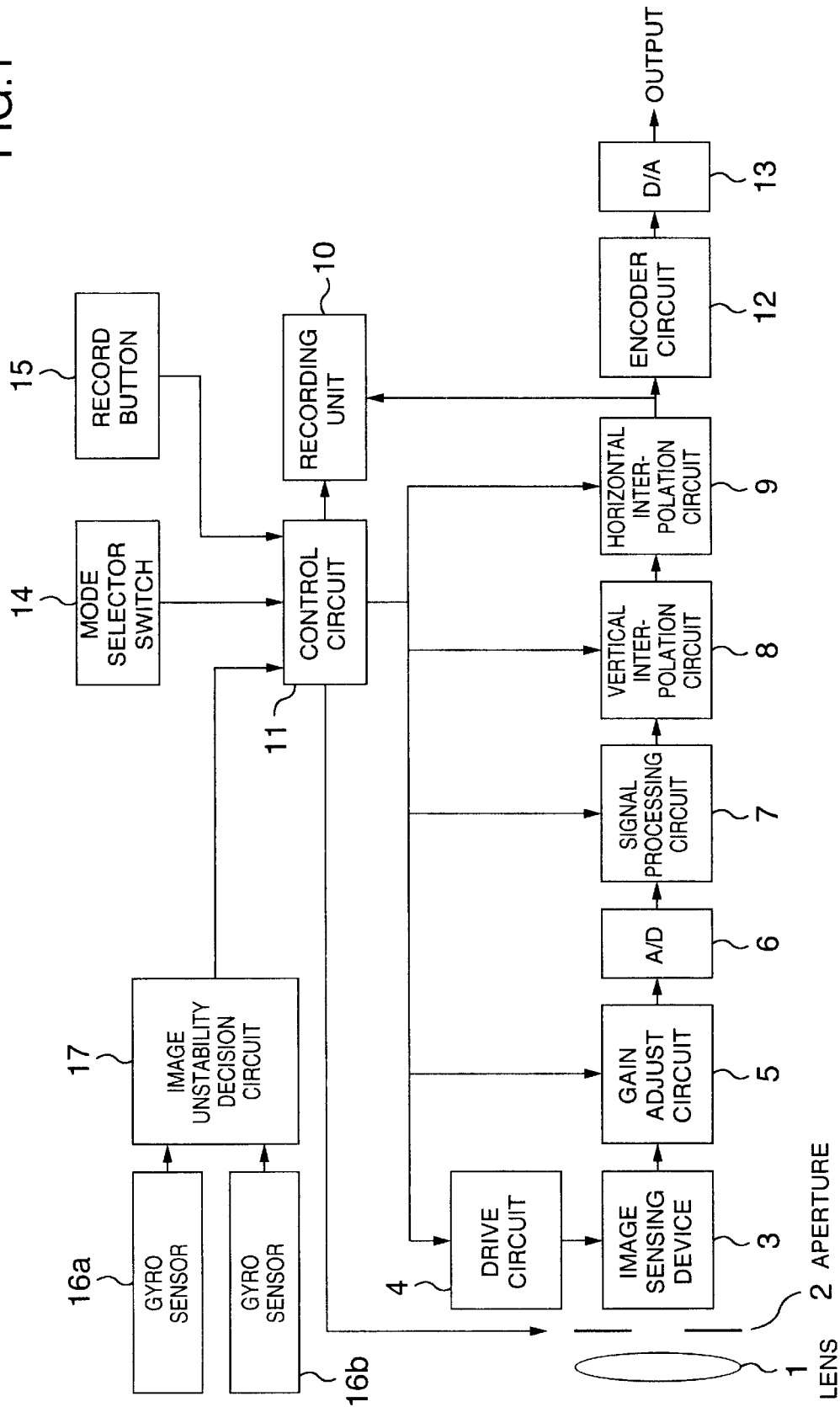


FIG.2

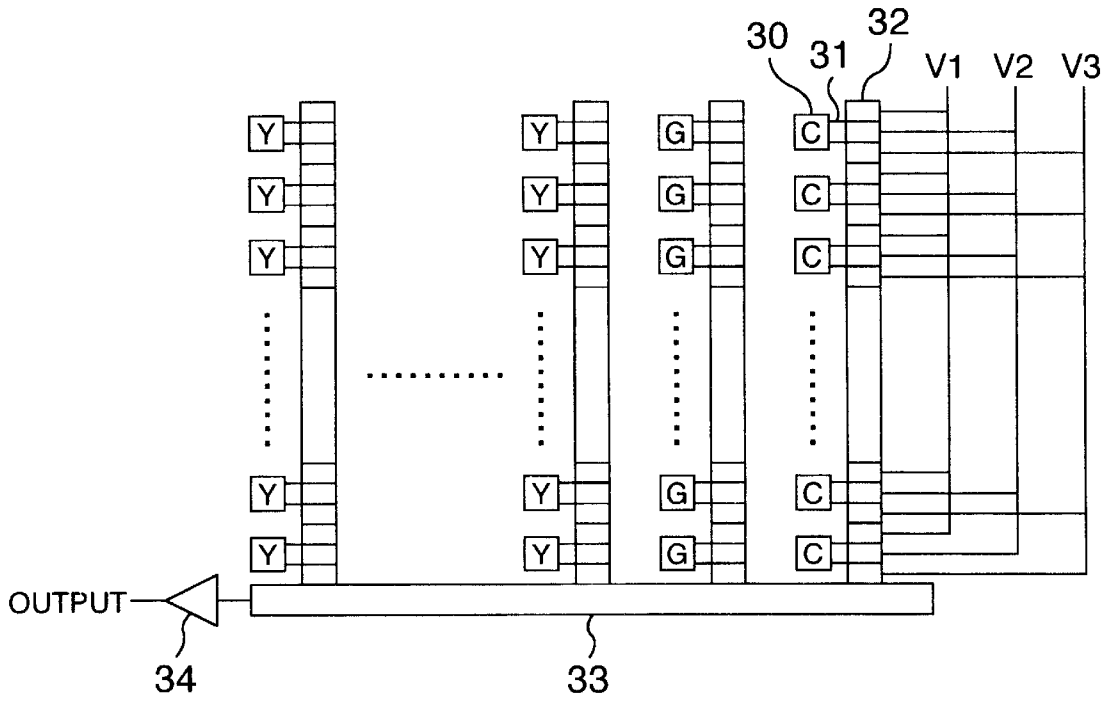


FIG.4

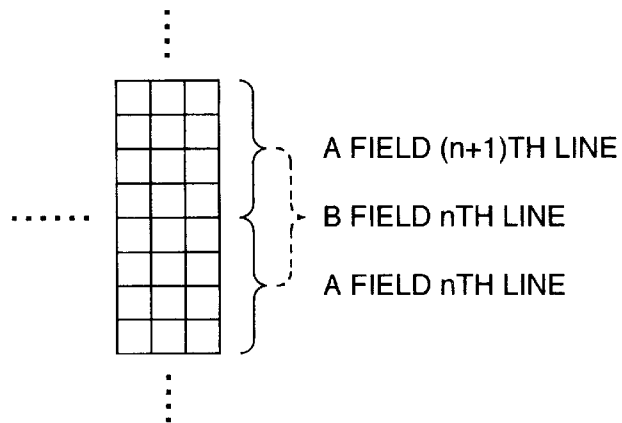


FIG.3

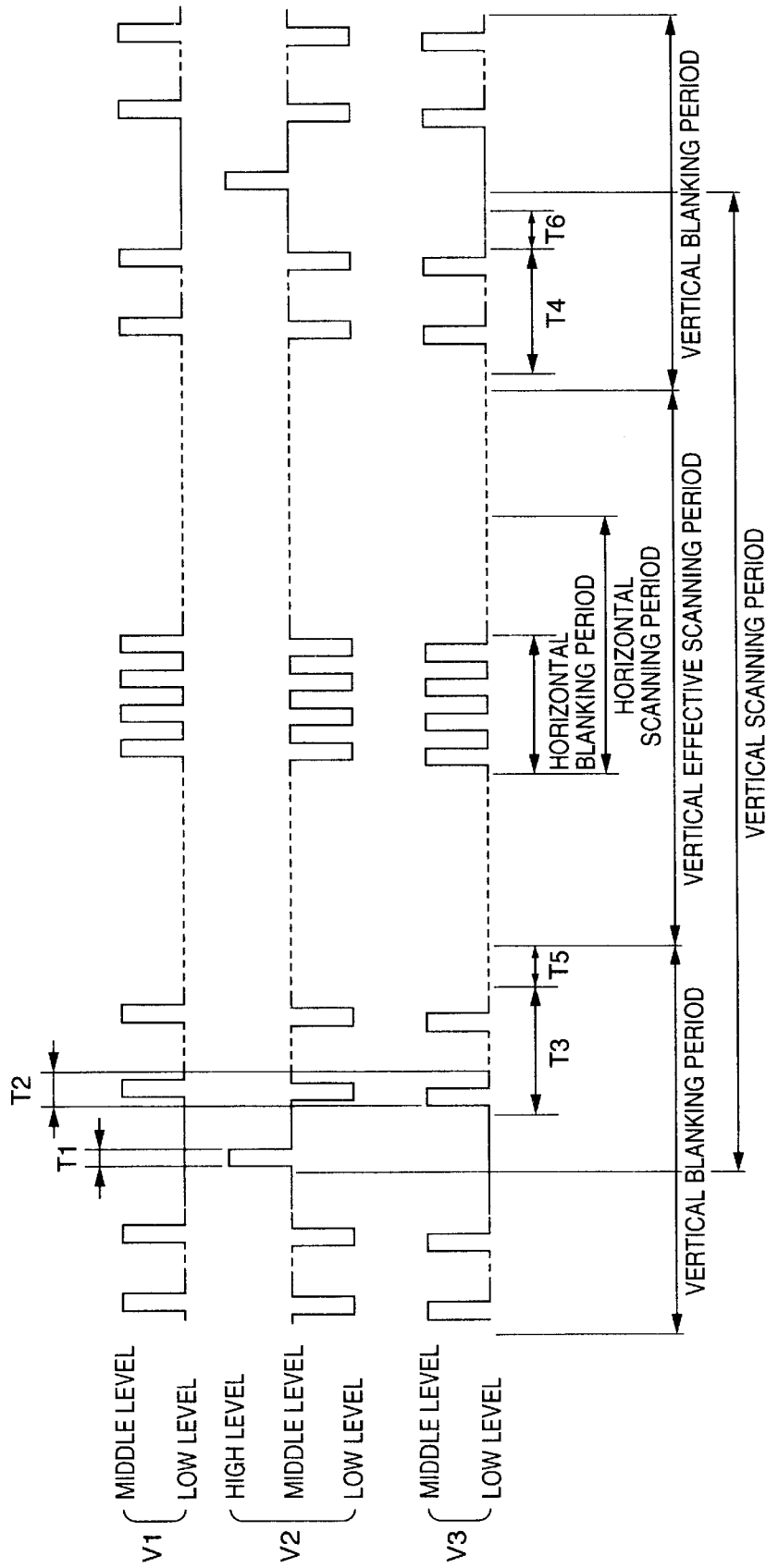


FIG.5

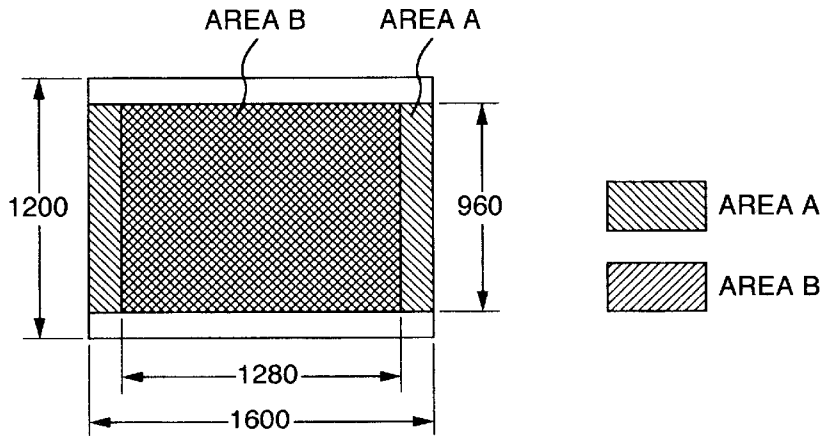
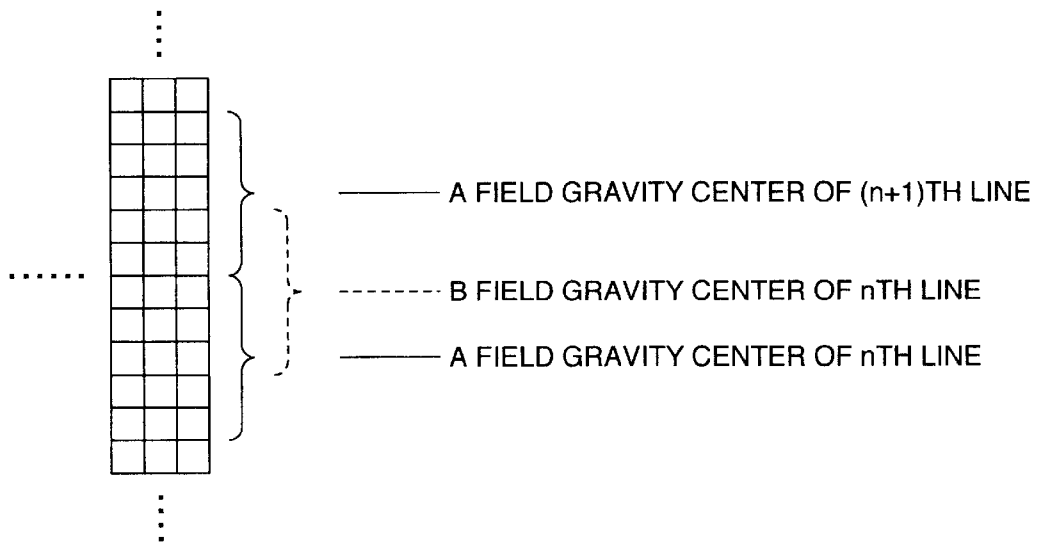


FIG.6



# Explore Litigation Insights

Docket Alarm provides insights to develop a more informed litigation strategy and the peace of mind of knowing you're on top of things.

## Real-Time Litigation Alerts



Keep your litigation team up-to-date with **real-time alerts** and advanced team management tools built for the enterprise, all while greatly reducing PACER spend.

Our comprehensive service means we can handle Federal, State, and Administrative courts across the country.

## Advanced Docket Research



With over 230 million records, Docket Alarm's cloud-native docket research platform finds what other services can't. Coverage includes Federal, State, plus PTAB, TTAB, ITC and NLRB decisions, all in one place.

Identify arguments that have been successful in the past with full text, pinpoint searching. Link to case law cited within any court document via Fastcase.

## Analytics At Your Fingertips



Learn what happened the last time a particular judge, opposing counsel or company faced cases similar to yours.

Advanced out-of-the-box PTAB and TTAB analytics are always at your fingertips.

## API

Docket Alarm offers a powerful API (application programming interface) to developers that want to integrate case filings into their apps.

## LAW FIRMS

Build custom dashboards for your attorneys and clients with live data direct from the court.

Automate many repetitive legal tasks like conflict checks, document management, and marketing.

## FINANCIAL INSTITUTIONS

Litigation and bankruptcy checks for companies and debtors.

## E-DISCOVERY AND LEGAL VENDORS

Sync your system to PACER to automate legal marketing.