



US 20130295892A1

(19) **United States**(12) **Patent Application Publication****Backhaus et al.**(10) **Pub. No.: US 2013/0295892 A1**(43) **Pub. Date: Nov. 7, 2013**(54) **SYSTEM AND METHOD FOR PROVISION OF  
A SECOND LINE SERVICE TO A  
TELECOMMUNICATIONS DEVICE USING  
MIXED PROTOCOLS**(60) Provisional application No. 61/660,772, filed on Jun.  
17, 2012.**Publication Classification**(71) Applicants: **George Backhaus**, Suwanee, GA (US);  
**Jignesh Gandhi**, Duluth, GA (US);  
**Julio Gonzalez**, Tucker, GA (US); **John  
Green**, Roswell, GA (US); **Philip  
Lowman**, Ellijay, GA (US); **Paul  
Rubenstein**, Johns Creek, GA (US);  
**Mike Speanburg**, Lawrenceville, GA  
(US)(51) **Int. Cl.**  
**H04W 4/16** (2006.01)  
(52) **U.S. Cl.**  
CPC ..... **H04W 4/16** (2013.01)  
USPC ..... **455/414.1**(57) **ABSTRACT**(72) Inventors: **George Backhaus**, Suwanee, GA (US);  
**Jignesh Gandhi**, Duluth, GA (US);  
**Julio Gonzalez**, Tucker, GA (US); **John  
Green**, Roswell, GA (US); **Philip  
Lowman**, Ellijay, GA (US); **Paul  
Rubenstein**, Johns Creek, GA (US);  
**Mike Speanburg**, Lawrenceville, GA  
(US)

A method for routing calls between a third party telecommunications device ("TD") and a subscriber TD associated with a primary service and a second line service ("SLS") involves associating the SLS number of the subscriber, the primary number of the subscriber and the primary number of a third party via a common relationship number. Calls directed from a third party to the SLS number of a subscriber are routed to an SLS platform and redirected to the subscriber TD. Calls directed from the subscriber TD to the third party use the relationship number to route the call to the SLS platform. The combination of the primary service number and the relationship number identifies the third party number for call completion. Calls can be directed to and from an SLS number of a subscriber TD using a combination of protocols such as ISUP, CAP and SIP.

(21) Appl. No.: **13/920,056**(22) Filed: **Jun. 17, 2013****Related U.S. Application Data**(63) Continuation-in-part of application No. 13/466,074,  
filed on May 7, 2012.

315

**Subscriber Relationship ID Table**

Subscriber Contact	Relationship Number	3 <sup>rd</sup> Party Number
1	+1.678.222.0001	+1.305.229.9999
2	+1.678.222.0002	+1.212.777.8888
3	+1.678.222.0003	+1.408.333.2222
4	+1.678.222.0004	
5	+1.678.222.0005	
...	...	
9,999	+1.678.222.9999	

Local SLS Database 106

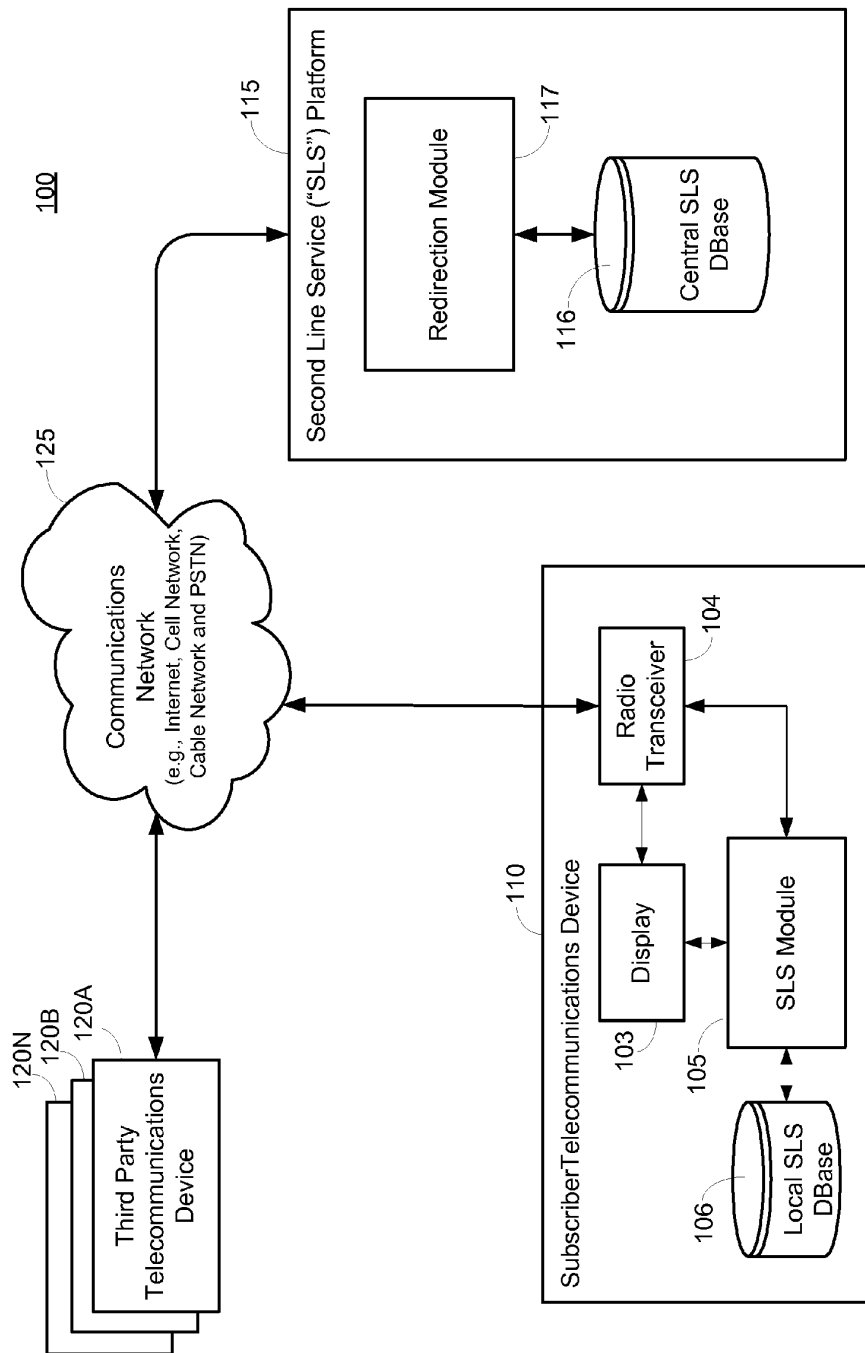


FIG. 1

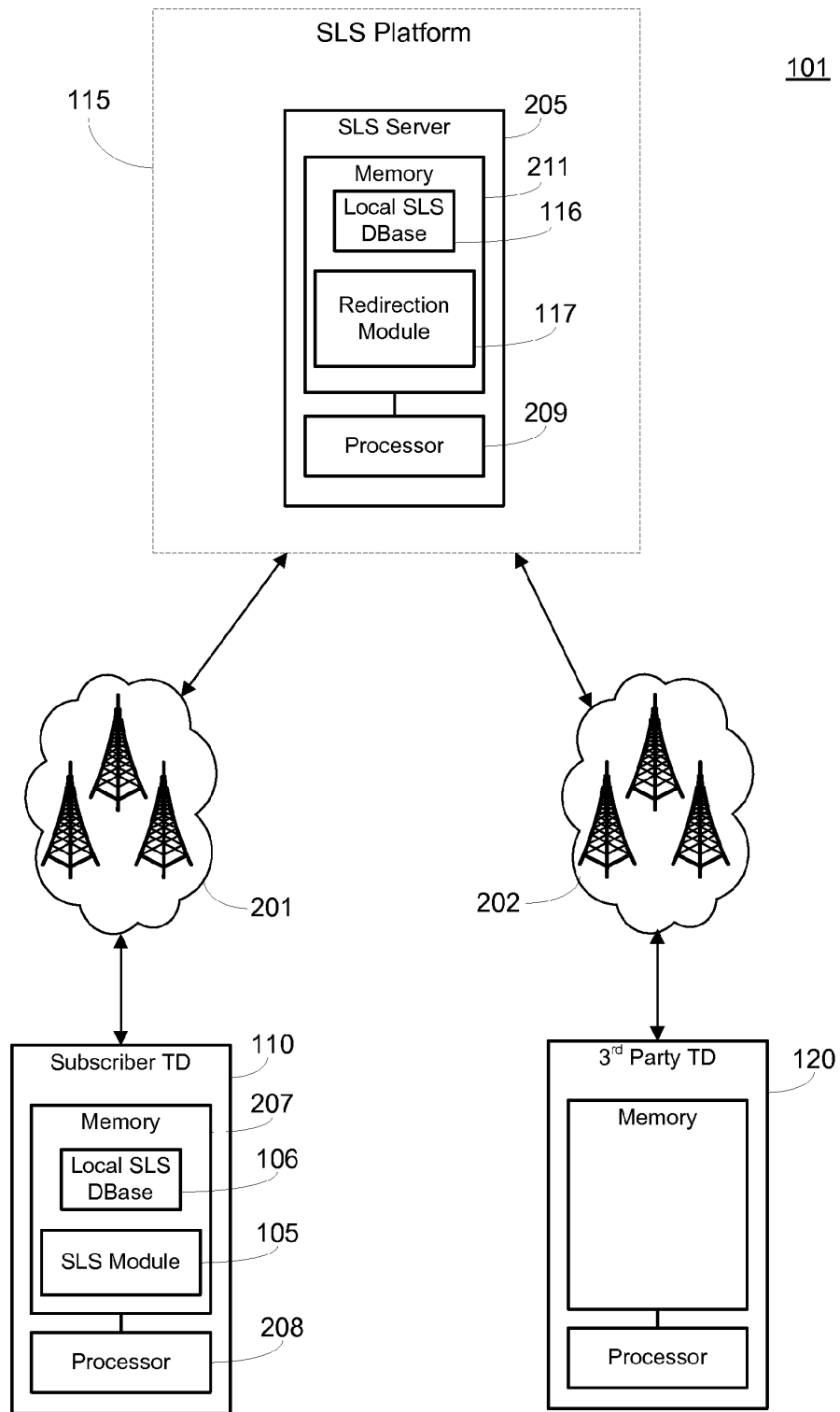


FIG. 2

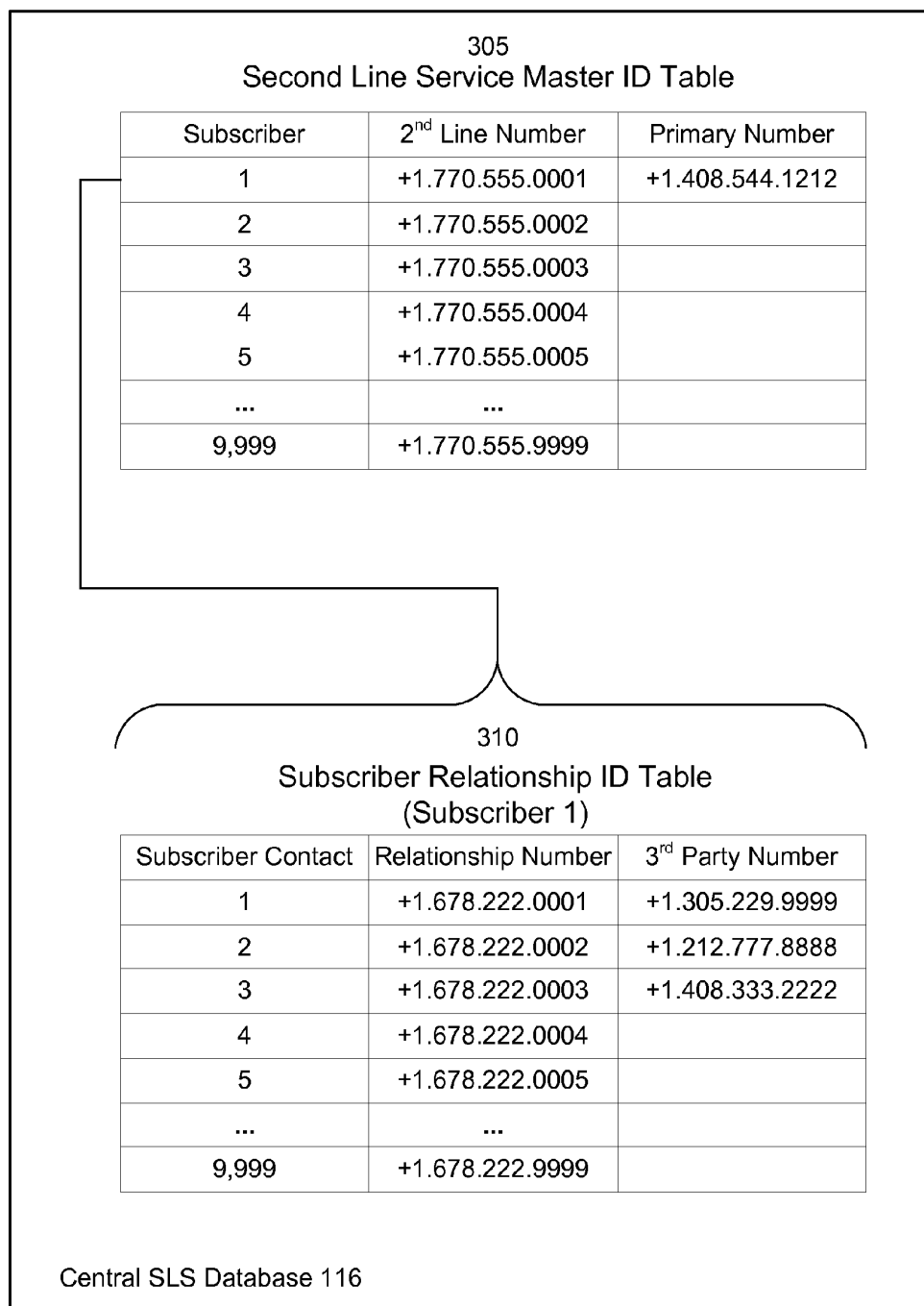


FIG. 3A

315  
Subscriber Relationship ID Table

Subscriber Contact	Relationship Number	3 <sup>rd</sup> Party Number
1	+1.678.222.0001	+1.305.229.9999
2	+1.678.222.0002	+1.212.777.8888
3	+1.678.222.0003	+1.408.333.2222
4	+1.678.222.0004	
5	+1.678.222.0005	
...	...	
9,999	+1.678.222.9999	

Local SLS Database 106

**FIG. 3B**

# Explore Litigation Insights

Docket Alarm provides insights to develop a more informed litigation strategy and the peace of mind of knowing you're on top of things.

## Real-Time Litigation Alerts



Keep your litigation team up-to-date with **real-time alerts** and advanced team management tools built for the enterprise, all while greatly reducing PACER spend.

Our comprehensive service means we can handle Federal, State, and Administrative courts across the country.

## Advanced Docket Research



With over 230 million records, Docket Alarm's cloud-native docket research platform finds what other services can't. Coverage includes Federal, State, plus PTAB, TTAB, ITC and NLRB decisions, all in one place.

Identify arguments that have been successful in the past with full text, pinpoint searching. Link to case law cited within any court document via Fastcase.

## Analytics At Your Fingertips



Learn what happened the last time a particular judge, opposing counsel or company faced cases similar to yours.

Advanced out-of-the-box PTAB and TTAB analytics are always at your fingertips.

## API

Docket Alarm offers a powerful API (application programming interface) to developers that want to integrate case filings into their apps.

## LAW FIRMS

Build custom dashboards for your attorneys and clients with live data direct from the court.

Automate many repetitive legal tasks like conflict checks, document management, and marketing.

## FINANCIAL INSTITUTIONS

Litigation and bankruptcy checks for companies and debtors.

## E-DISCOVERY AND LEGAL VENDORS

Sync your system to PACER to automate legal marketing.