



US 20040236850A1

(19) **United States**(12) **Patent Application Publication****Krumm et al.**(10) **Pub. No.: US 2004/0236850 A1**(43) **Pub. Date: Nov. 25, 2004**(54) **CLIENT PROXIMITY DETECTION METHOD
AND SYSTEM****Publication Classification**

(75) Inventors: **John C. Krumm**, Redmond, WA (US);
Susan D. Woolf, Seattle, WA (US);
Roland Fernandez, Woodinville, WA
(US); **David J. Marsh**, Sammamish,
WA (US); **Albert D. Jee**, Sammamish,
WA (US); **Wayne G. King**, Kirkland,
WA (US)

(51) **Int. Cl.⁷ G06F 15/173**(52) **U.S. Cl. 709/224; 370/913**(57) **ABSTRACT**

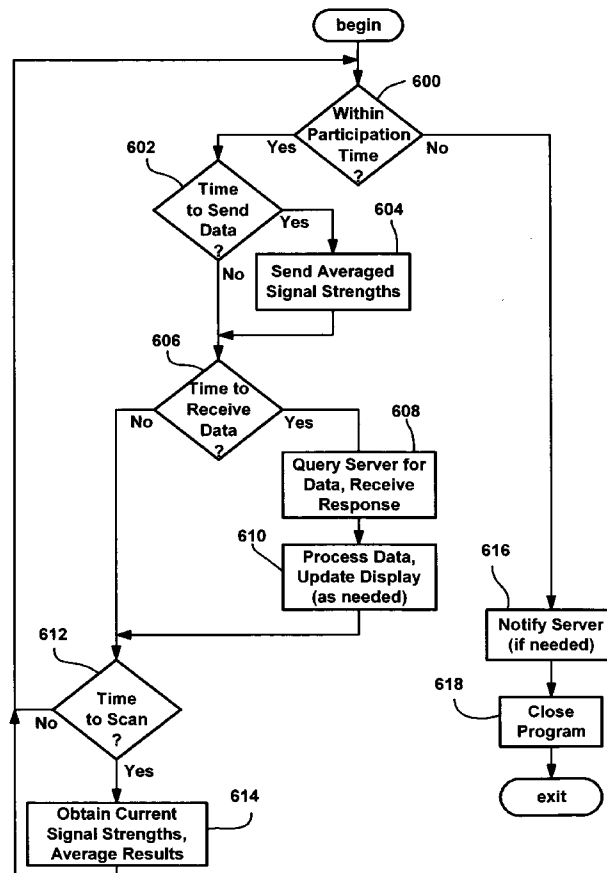
A system and method in a wireless network for discovering which resources (e.g., other wireless computing devices) are proximate a user's wireless computing device. Wireless signal strengths with respect to various base stations are compared with the signal strengths of other network devices or resources, to determine which devices are experiencing similar signal strengths. Devices with similar signal strengths are deemed proximate. Each participating computing device may send its signal strength reports to a proximity server, which distributes proximity data to network clients. Each client may receive and process the signal strength data for determining which other clients/resources are proximate, or the server can perform proximity computations and return a list of proximate clients. Once computed, the identities of the proximate clients can be used to query for additional data about the clients, such as the names and other details of their owners, or information about the resource.

Correspondence Address:

Law Offices of Albert S. Michalik, PLLC
Suite 193
704 -228th Avenue NE
Sammamish, WA 98074 (US)

(73) Assignee: **MICROSOFT CORPORATION,**
REDMOND, WASHINGTON(21) Appl. No.: **10/677,125**(22) Filed: **Sep. 30, 2003****Related U.S. Application Data**

(60) Provisional application No. 60/471,982, filed on May 19, 2003.



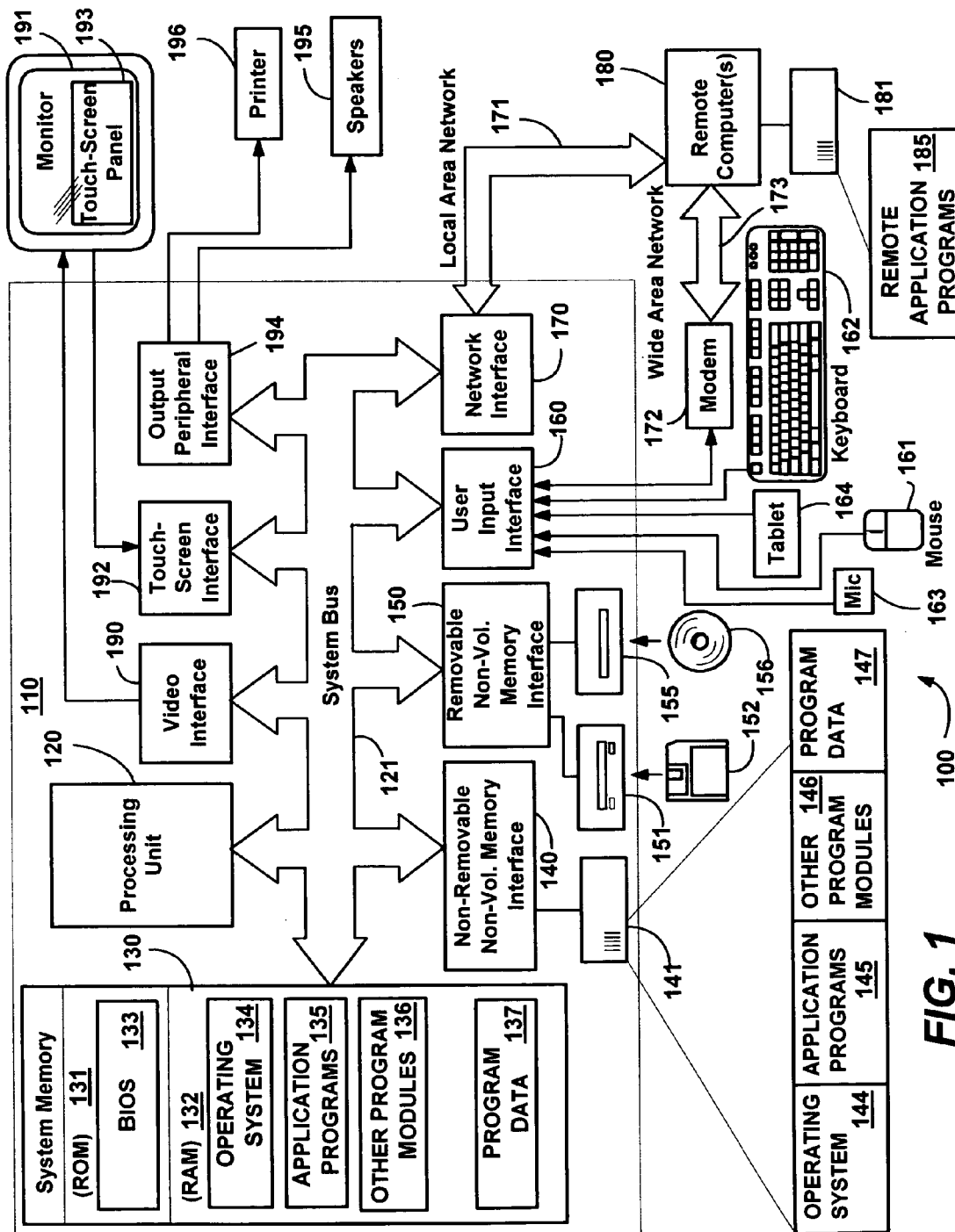
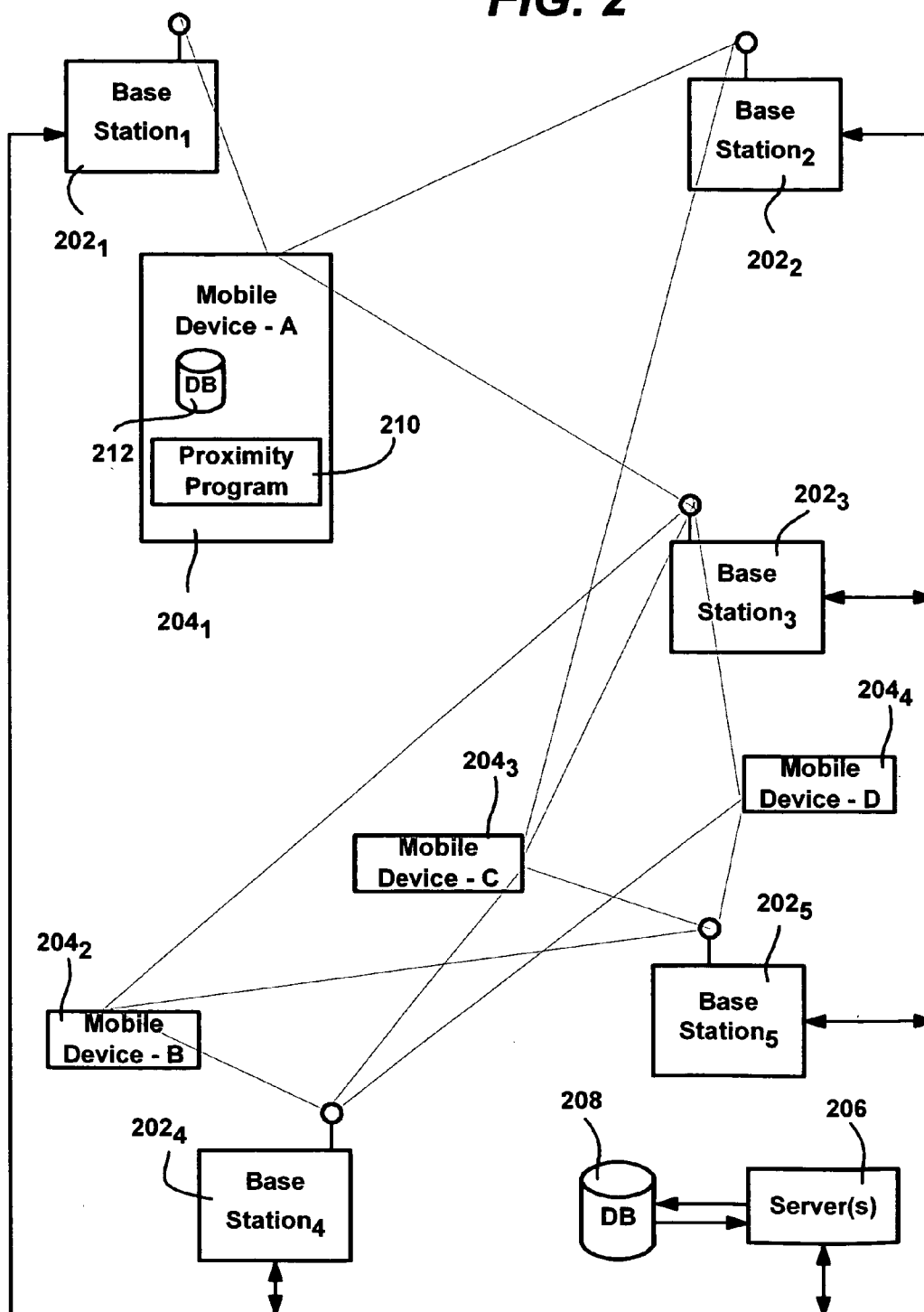


FIG. 2



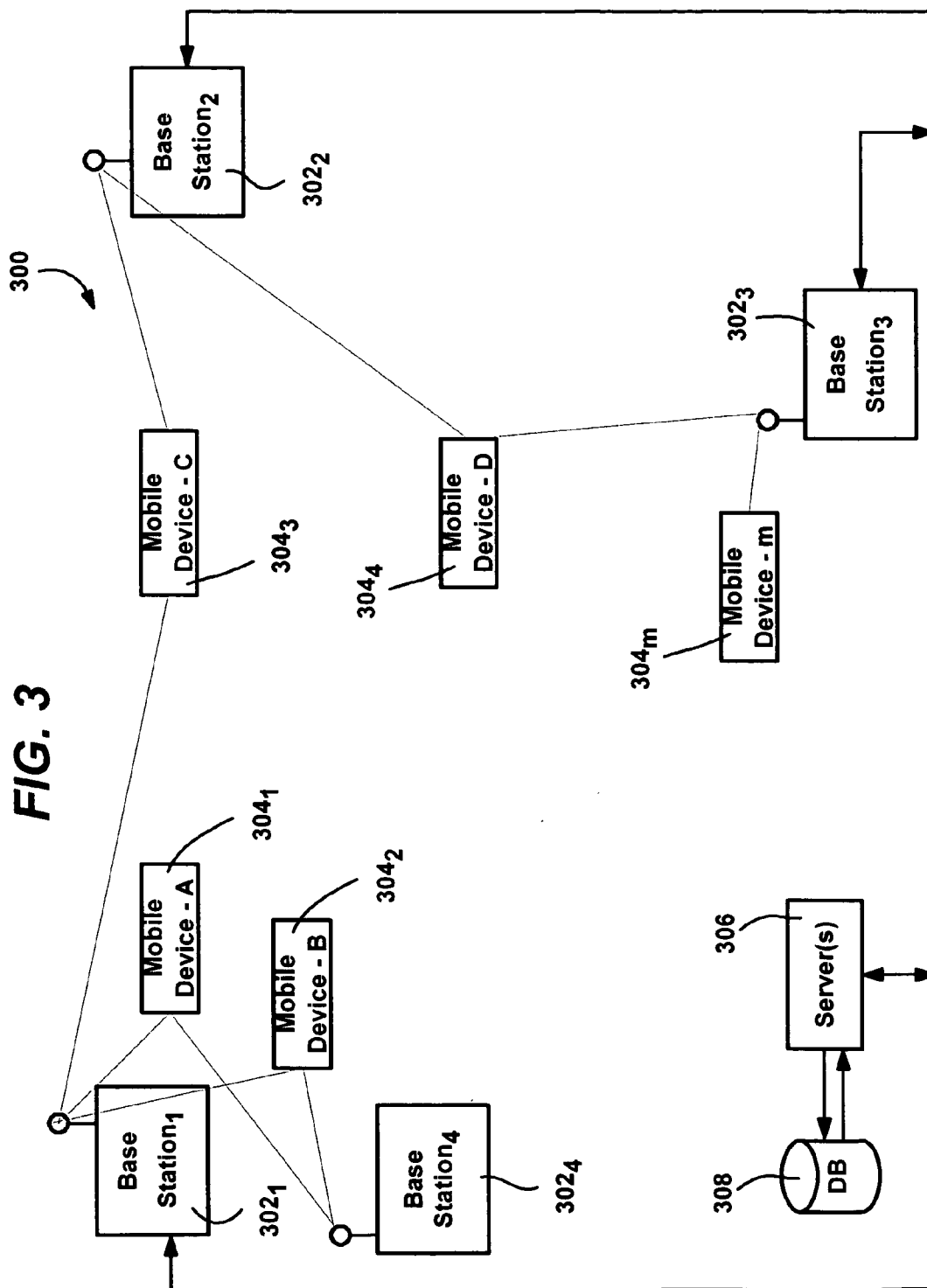
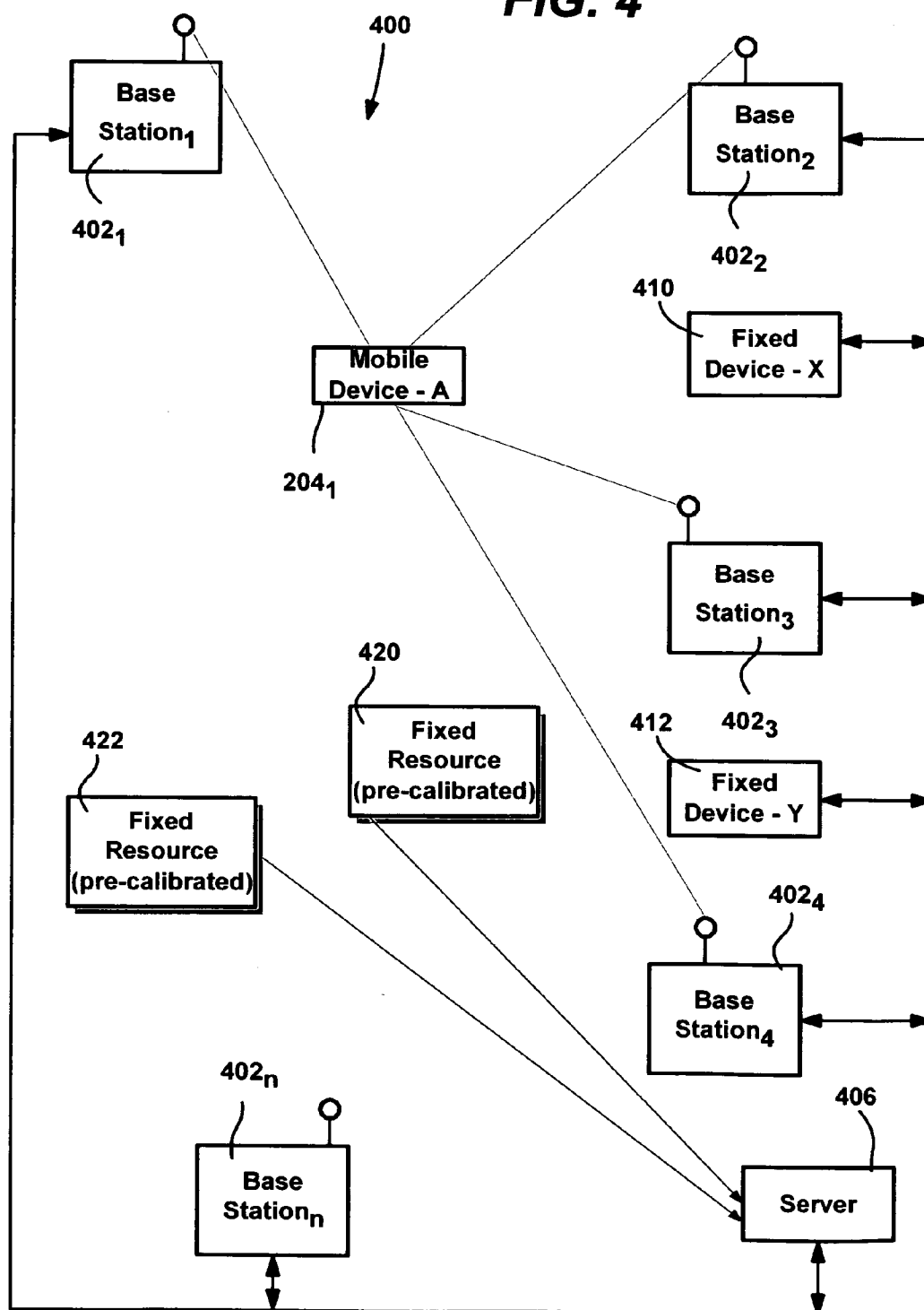


FIG. 4



Explore Litigation Insights

Docket Alarm provides insights to develop a more informed litigation strategy and the peace of mind of knowing you're on top of things.

Real-Time Litigation Alerts



Keep your litigation team up-to-date with **real-time alerts** and advanced team management tools built for the enterprise, all while greatly reducing PACER spend.

Our comprehensive service means we can handle Federal, State, and Administrative courts across the country.

Advanced Docket Research



With over 230 million records, Docket Alarm's cloud-native docket research platform finds what other services can't. Coverage includes Federal, State, plus PTAB, TTAB, ITC and NLRB decisions, all in one place.

Identify arguments that have been successful in the past with full text, pinpoint searching. Link to case law cited within any court document via Fastcase.

Analytics At Your Fingertips



Learn what happened the last time a particular judge, opposing counsel or company faced cases similar to yours.

Advanced out-of-the-box PTAB and TTAB analytics are always at your fingertips.

API

Docket Alarm offers a powerful API (application programming interface) to developers that want to integrate case filings into their apps.

LAW FIRMS

Build custom dashboards for your attorneys and clients with live data direct from the court.

Automate many repetitive legal tasks like conflict checks, document management, and marketing.

FINANCIAL INSTITUTIONS

Litigation and bankruptcy checks for companies and debtors.

E-DISCOVERY AND LEGAL VENDORS

Sync your system to PACER to automate legal marketing.