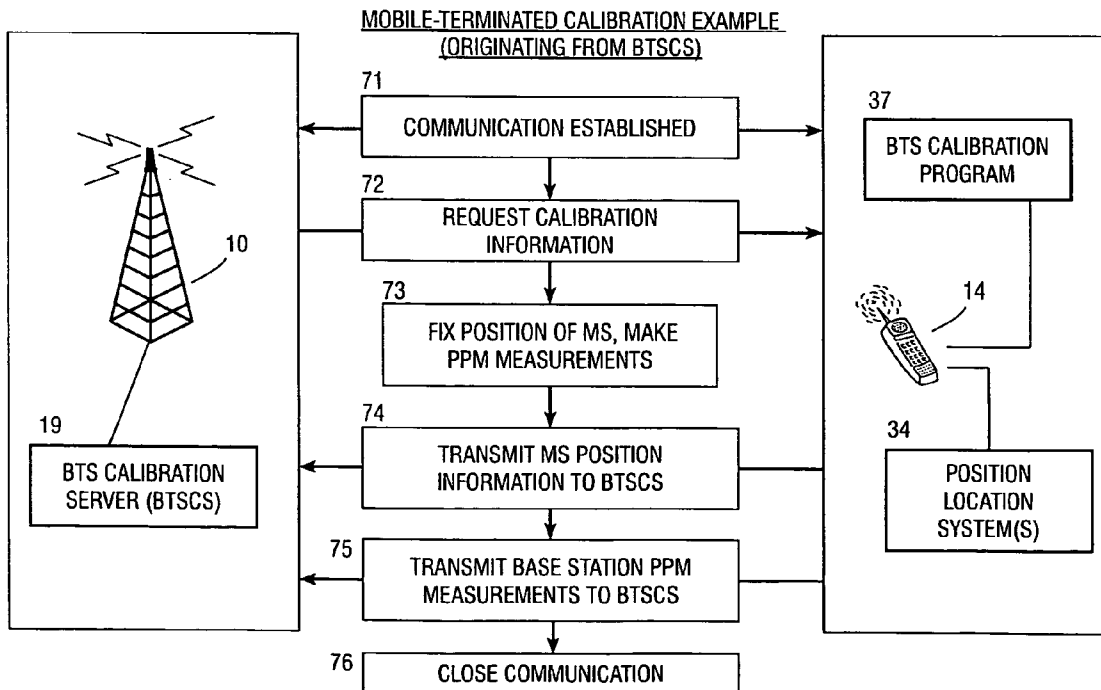


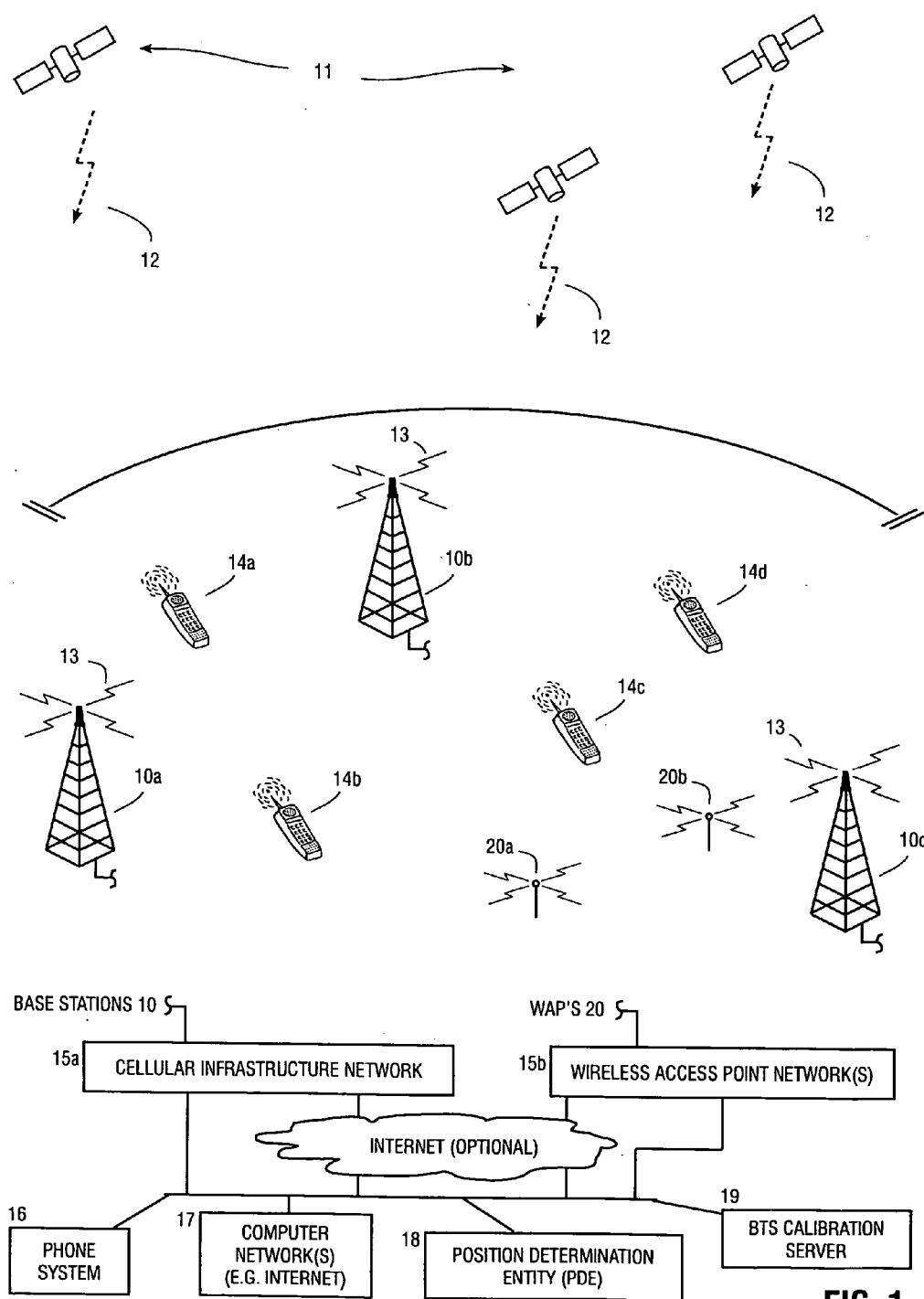


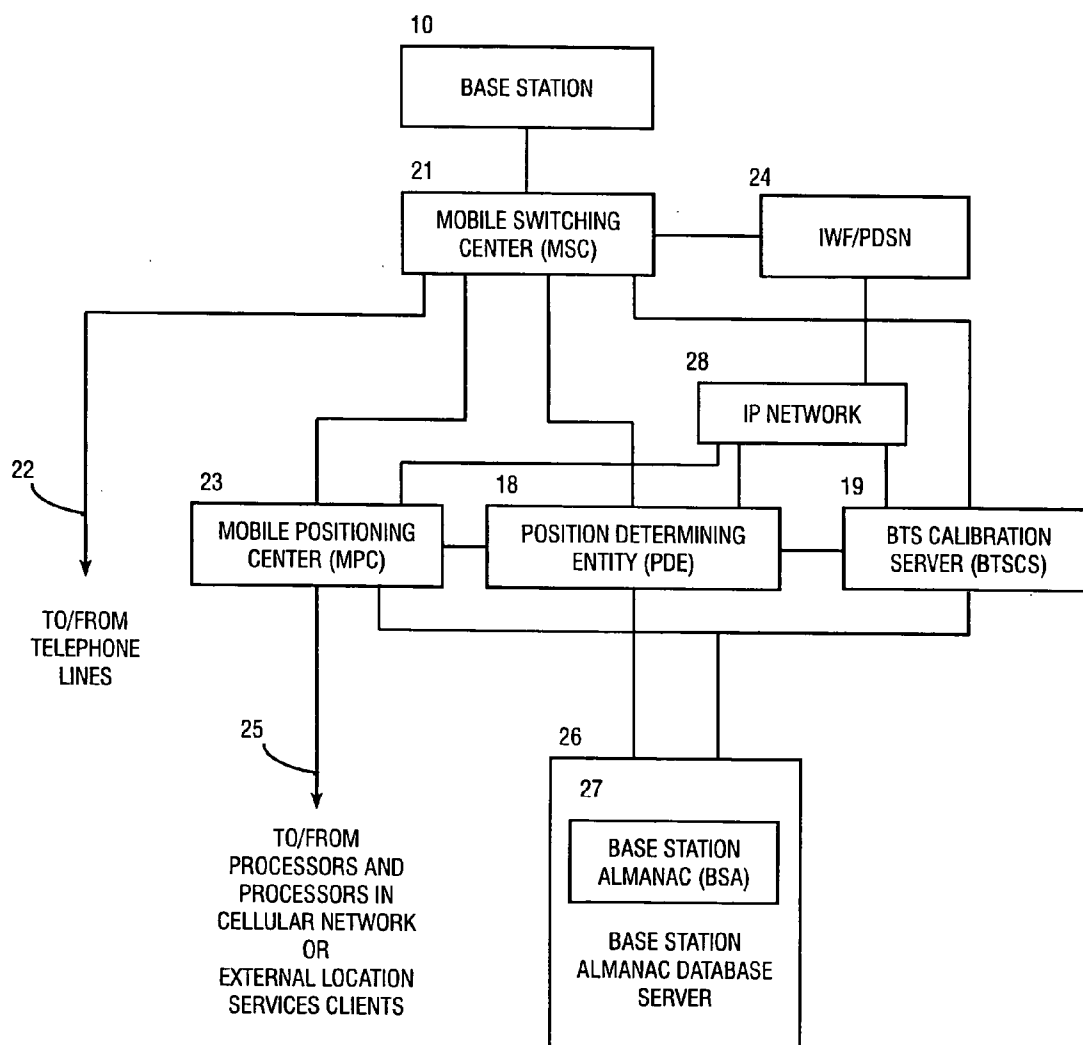
US 20060009235A1

(19) **United States**(12) **Patent Application Publication**
Sheynblat et al.(10) **Pub. No.: US 2006/0009235 A1**(43) **Pub. Date: Jan. 12, 2006**(54) **METHOD AND APPARATUS FOR
DETERMINING LOCATION OF A BASE
STATION USING A PLURALITY OF MOBILE
STATIONS IN A WIRELESS MOBILE
NETWORK****Publication Classification**(51) **Int. Cl.**
H04Q 7/20 (2006.01)
(52) **U.S. Cl.** **455/456.1**(76) **Inventors:** Leonid Sheynblat, Hillsborough, CA
(US); Thomas Wrappe, Los Gatos, CA
(US)**Correspondence Address:**
QUALCOMM, INC
5775 MOREHOUSE DR.
SAN DIEGO, CA 92121 (US)(21) **Appl. No.: 10/971,591**(22) **Filed: Oct. 21, 2004****Related U.S. Application Data**(60) **Provisional application No. 60/580,929, filed on Jun.**
18, 2004.(57) **ABSTRACT**

A method and apparatus for determining a position of a base station in a wireless communication network that includes a mobile station in communication with base stations. A BTS calibration server is networked with the base stations. A BTS calibration program is programmed into a group of mobile stations that have position location capabilities. Using the BTS calibration program, calibration information may be requested by the BTS calibration server, or a session may be initiated by the mobile station. The BTS calibration program also provides privacy features that allow user of the mobile station to prevent it from being used for base station location. If authorized, the BTS calibration program determines the position of the mobile station, and provides calibration information, such as position and base station phase measurements, to the server. The calibration information may be used to calibrate the base station almanac.







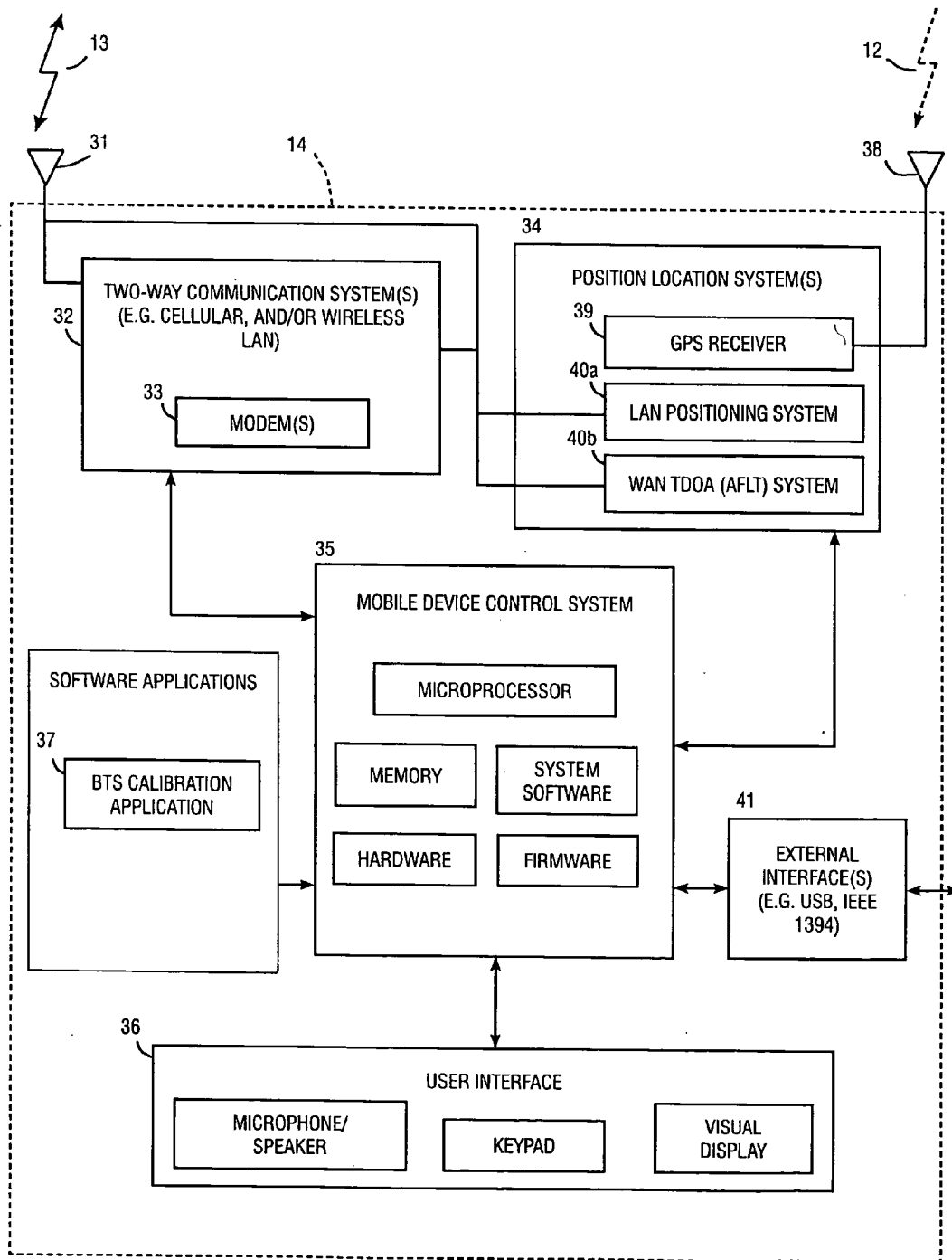


FIG. 3

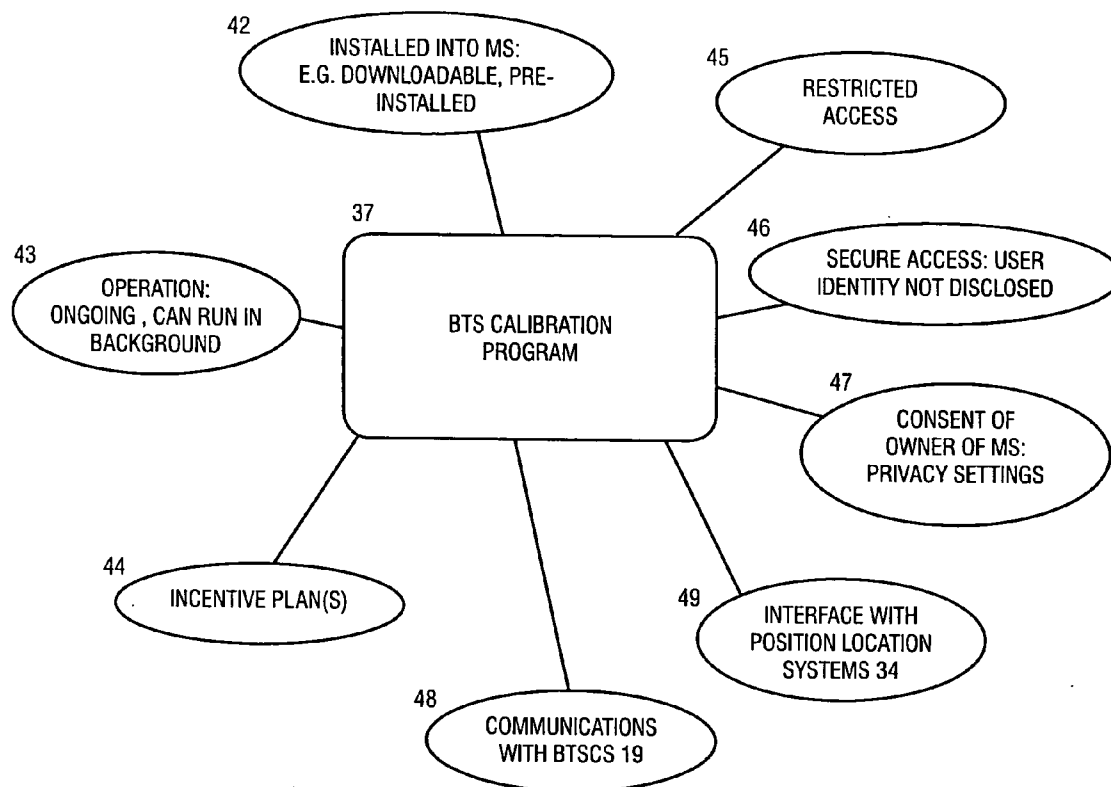


FIG. 4

Explore Litigation Insights

Docket Alarm provides insights to develop a more informed litigation strategy and the peace of mind of knowing you're on top of things.

Real-Time Litigation Alerts



Keep your litigation team up-to-date with **real-time alerts** and advanced team management tools built for the enterprise, all while greatly reducing PACER spend.

Our comprehensive service means we can handle Federal, State, and Administrative courts across the country.

Advanced Docket Research



With over 230 million records, Docket Alarm's cloud-native docket research platform finds what other services can't. Coverage includes Federal, State, plus PTAB, TTAB, ITC and NLRB decisions, all in one place.

Identify arguments that have been successful in the past with full text, pinpoint searching. Link to case law cited within any court document via Fastcase.

Analytics At Your Fingertips



Learn what happened the last time a particular judge, opposing counsel or company faced cases similar to yours.

Advanced out-of-the-box PTAB and TTAB analytics are always at your fingertips.

API

Docket Alarm offers a powerful API (application programming interface) to developers that want to integrate case filings into their apps.

LAW FIRMS

Build custom dashboards for your attorneys and clients with live data direct from the court.

Automate many repetitive legal tasks like conflict checks, document management, and marketing.

FINANCIAL INSTITUTIONS

Litigation and bankruptcy checks for companies and debtors.

E-DISCOVERY AND LEGAL VENDORS

Sync your system to PACER to automate legal marketing.