

(19) **United States**(12) **Patent Application Publication** (10) **Pub. No.: US 2003/012995 A1**

Niwa et al.

(43) **Pub. Date:****Jul. 10, 2003**(54) **MOBILE TERMINAL DEVICE AND
POSITIONAL INFORMATION SYSTEM**(52) **U.S. Cl.** **455/456; 455/66**(75) Inventors: **Satoshi Niwa, Tokyo (JP); Masaki
Ichihara, Tokyo (JP)**(57) **ABSTRACT**

Correspondence Address:
FOLEY AND LARDNER
SUITE 500
3000 K STREET NW
WASHINGTON, DC 20007 (US)

(73) Assignee: **NEC CORPORATION**(21) Appl. No.: **10/334,067**(22) Filed: **Dec. 31, 2002**(30) **Foreign Application Priority Data**

Jan. 7, 2002 (JP) 2002-000478

Publication Classification(51) **Int. Cl.⁷** **H04B 7/00**

A geomagnetic sensor for detecting geomagnetism is provided in a mobile terminal device. The output value of the geomagnetic sensor is compared with a first set value that has been set in advance, and the mobile terminal device is determined to be stationary when the output value of the geomagnetic sensor continues to be smaller than a first set value for at least a first set time period that has been set in advance, and the mobile terminal device is determined to be moving when the output value of the geomagnetic sensor fluctuates by at least the first set value. The determination results are transmitted to the base station, and the base station decreases the number of times for executing a process of registering the position of the mobile terminal device to the base station when the mobile terminal device is stationary, and increases the number of times of executing the process for registering position when the mobile terminal device is moving.

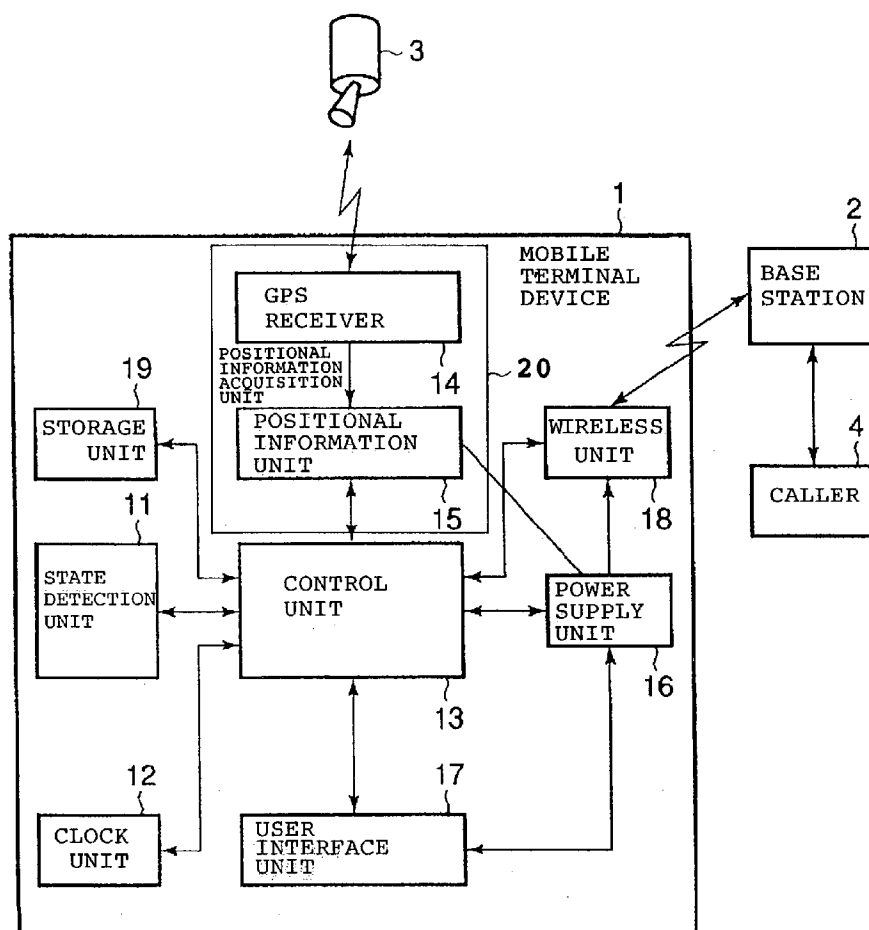


Fig. 1

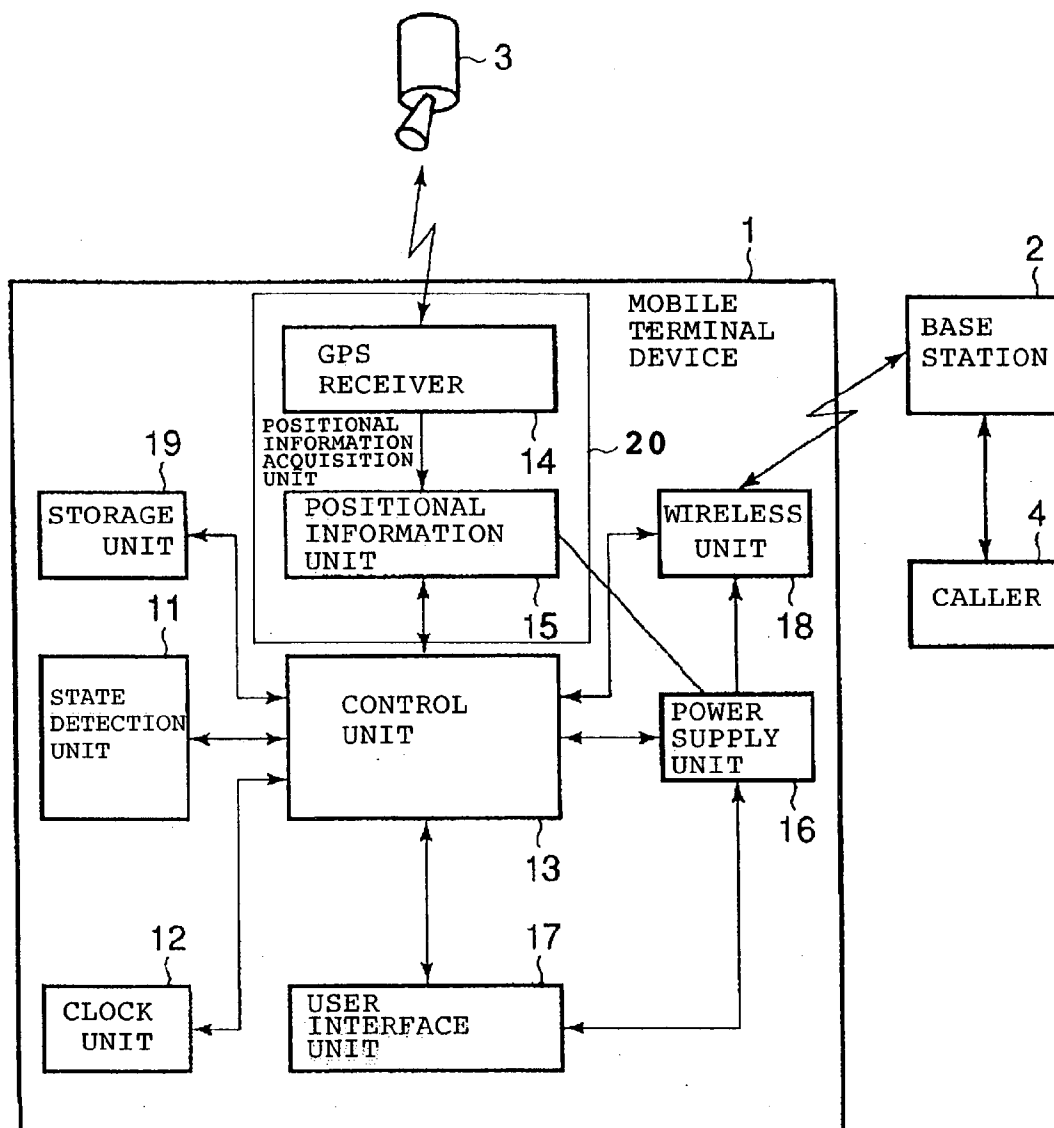


Fig. 2

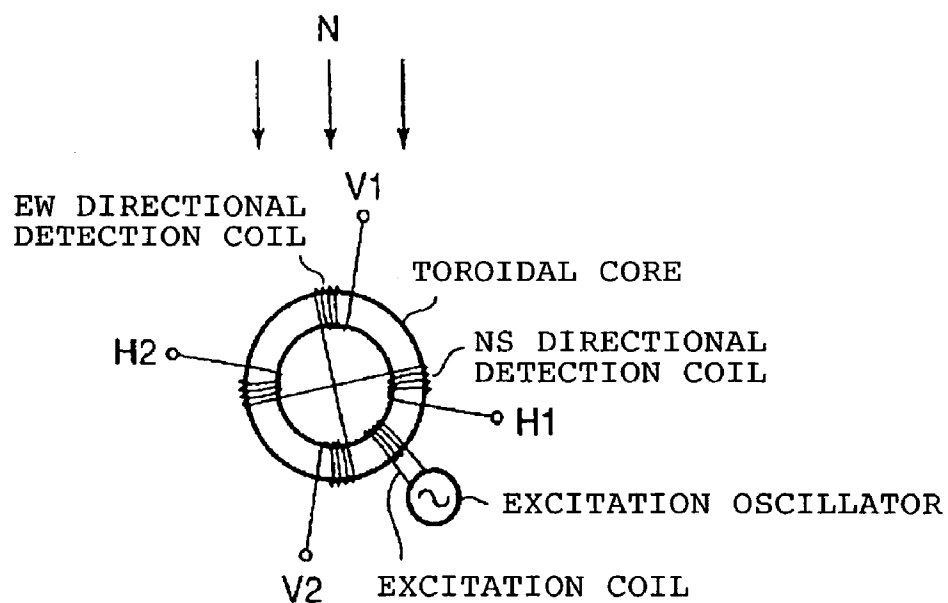


Fig. 3

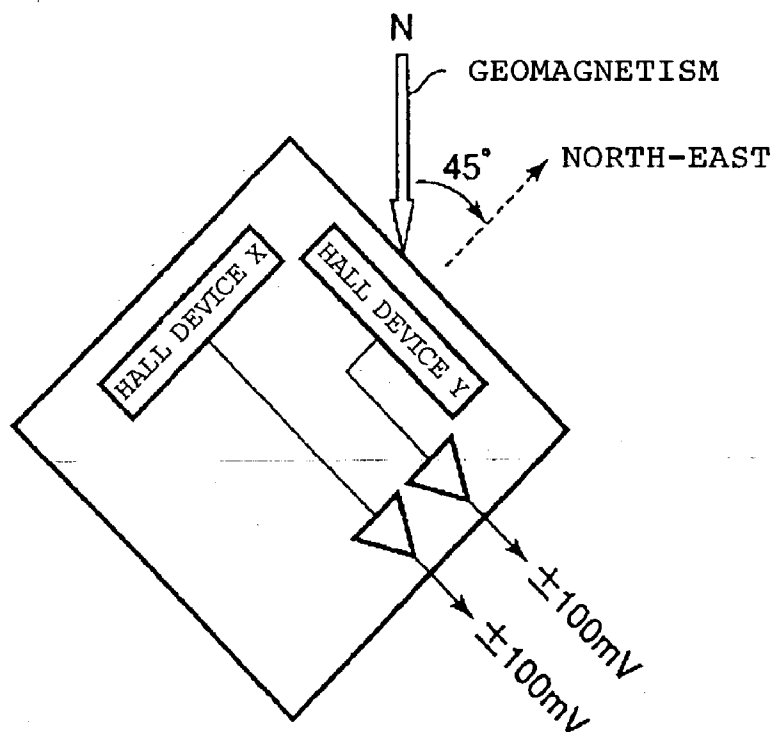


Fig. 4

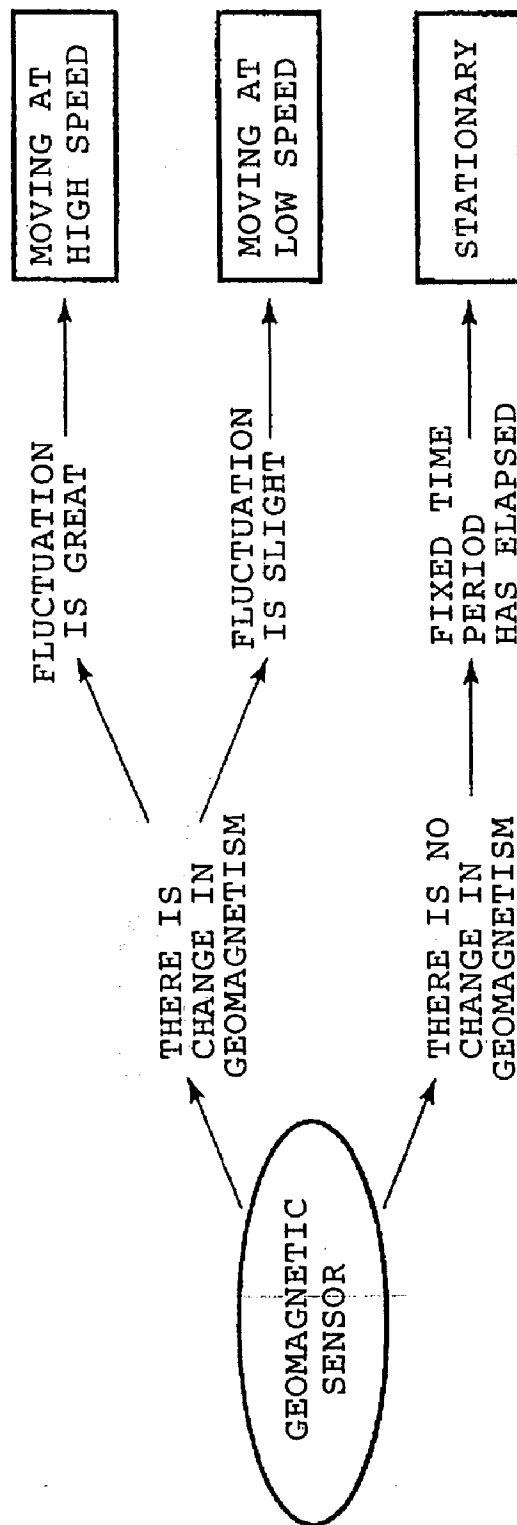
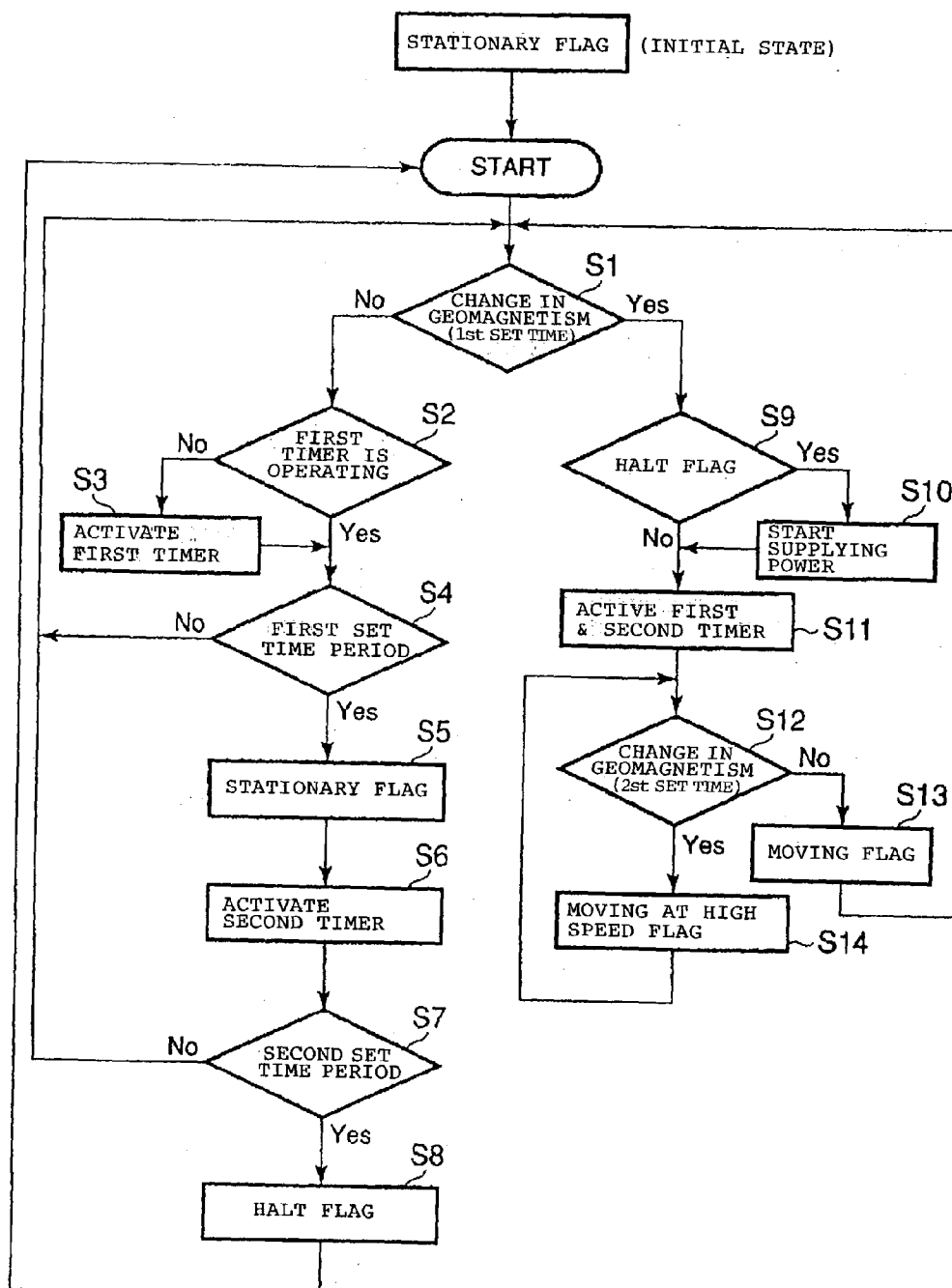


Fig. 5



Explore Litigation Insights

Docket Alarm provides insights to develop a more informed litigation strategy and the peace of mind of knowing you're on top of things.

Real-Time Litigation Alerts



Keep your litigation team up-to-date with **real-time alerts** and advanced team management tools built for the enterprise, all while greatly reducing PACER spend.

Our comprehensive service means we can handle Federal, State, and Administrative courts across the country.

Advanced Docket Research



With over 230 million records, Docket Alarm's cloud-native docket research platform finds what other services can't. Coverage includes Federal, State, plus PTAB, TTAB, ITC and NLRB decisions, all in one place.

Identify arguments that have been successful in the past with full text, pinpoint searching. Link to case law cited within any court document via Fastcase.

Analytics At Your Fingertips



Learn what happened the last time a particular judge, opposing counsel or company faced cases similar to yours.

Advanced out-of-the-box PTAB and TTAB analytics are always at your fingertips.

API

Docket Alarm offers a powerful API (application programming interface) to developers that want to integrate case filings into their apps.

LAW FIRMS

Build custom dashboards for your attorneys and clients with live data direct from the court.

Automate many repetitive legal tasks like conflict checks, document management, and marketing.

FINANCIAL INSTITUTIONS

Litigation and bankruptcy checks for companies and debtors.

E-DISCOVERY AND LEGAL VENDORS

Sync your system to PACER to automate legal marketing.