

(19) **United States**(12) **Patent Application Publication** (10) **Pub. No.: US 2001/0055974 A1****Bates et al.**(43) **Pub. Date: Dec. 27, 2001**

(54) **TELEPHONE SYSTEM AND METHOD FOR SELECTIVELY RINGING ONE OR MORE LAND PHONES OR PORTABLE PHONES BASED ON THE SELF-DETECTED GEOGRAPHICAL POSITION OF A PORTABLE PHONE**

Related U.S. Application Data

(63) Continuation-in-part of application No. 09/591,331, filed on Jun. 9, 2000.

Publication Classification

(51) **Int. Cl.⁷** **H04Q 7/20**

(52) **U.S. Cl.** **455/456; 455/445**

(76) **Inventors:** **Cary Lee Bates**, Rochester, MN (US);
Jeffrey Michael Ryan, Byron, MN (US); **John Matthew Santosuosso**,
 Rochester, MN (US)

Correspondence Address:

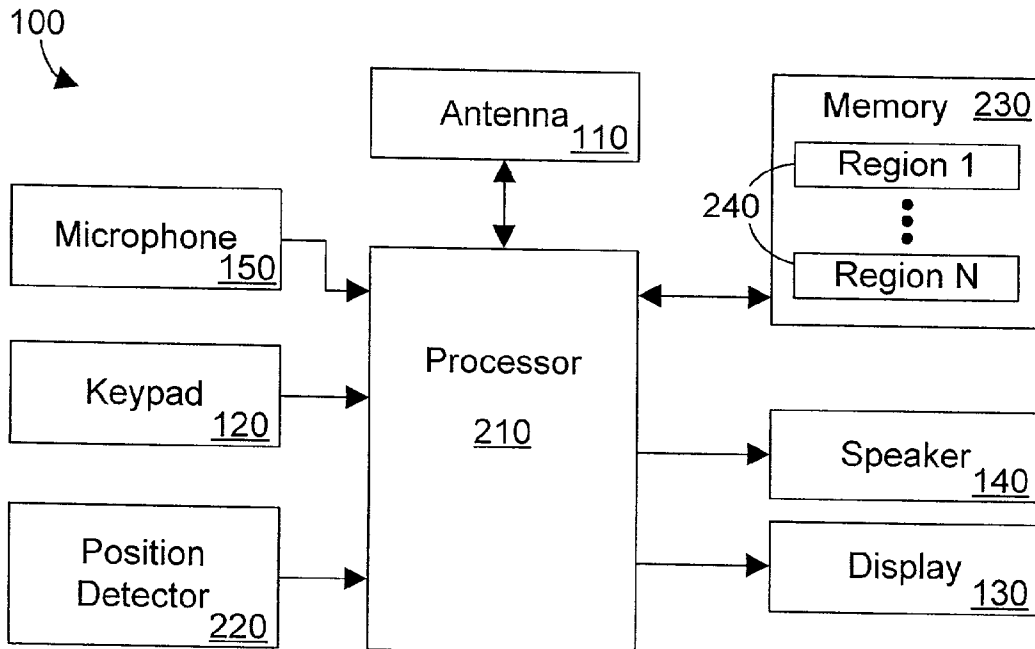
MARTIN & ASSOCIATES, LLC
P O BOX 548
CARTHAGE, MO 64836-0548 (US)

(21) **Appl. No.:** **09/759,784**

(22) **Filed:** **Jan. 12, 2001**

(57) ABSTRACT

A portable phone is equipped with a position detector that detects the geographical position of the portable phone, and a telephone system may ring one or more land-based phones or portable phones according to the geographical position of the portable phone. One or more geographical regions are defined, with corresponding telephone parameters defined for each region. When a portable phone enters a defined region, exits a defined region, or changes between two defined regions, the function of one or more land-based phones or portable phones may change. The preferred embodiments thus allow changing the function of one or more other phones based on the self-detected geographical position of a portable phone. In this manner the convenience of using portable phones is greatly enhanced.



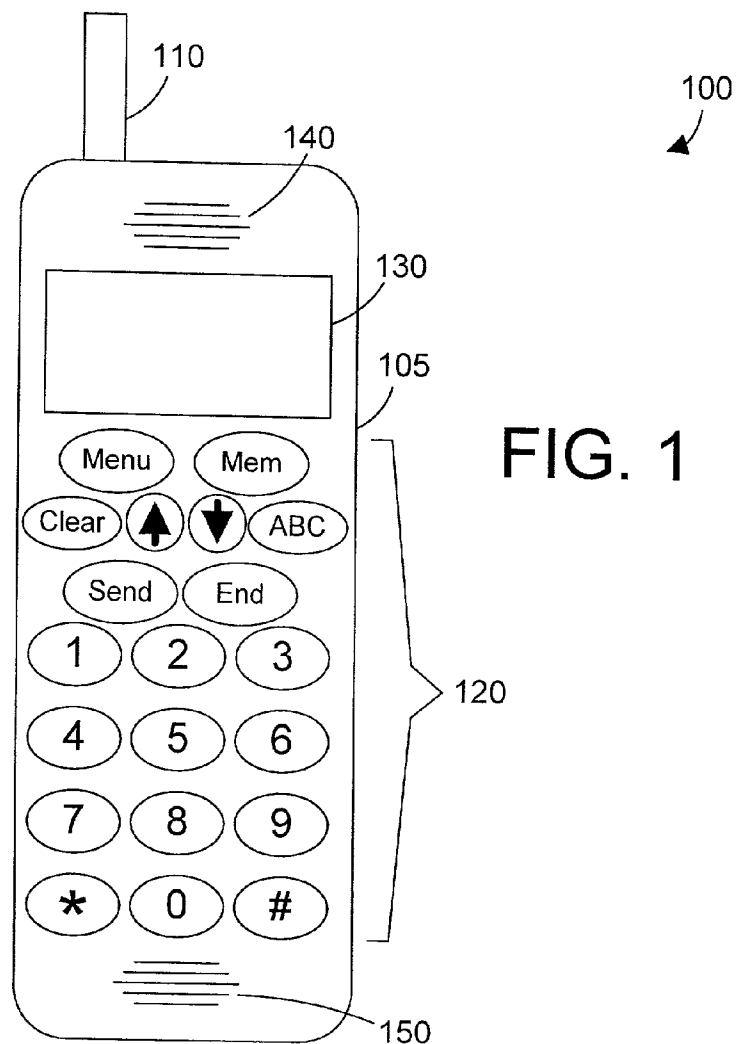


FIG. 1

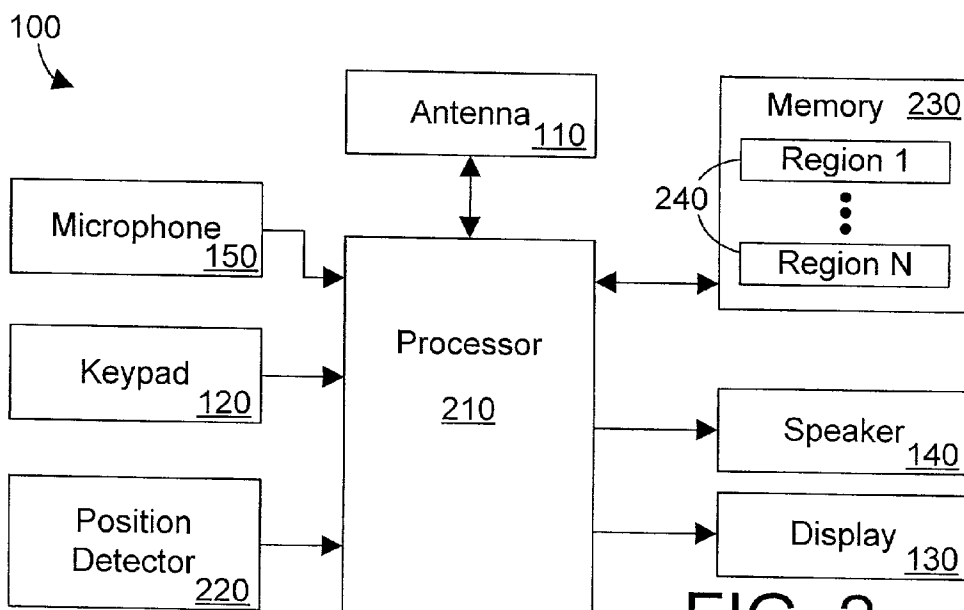


FIG. 2

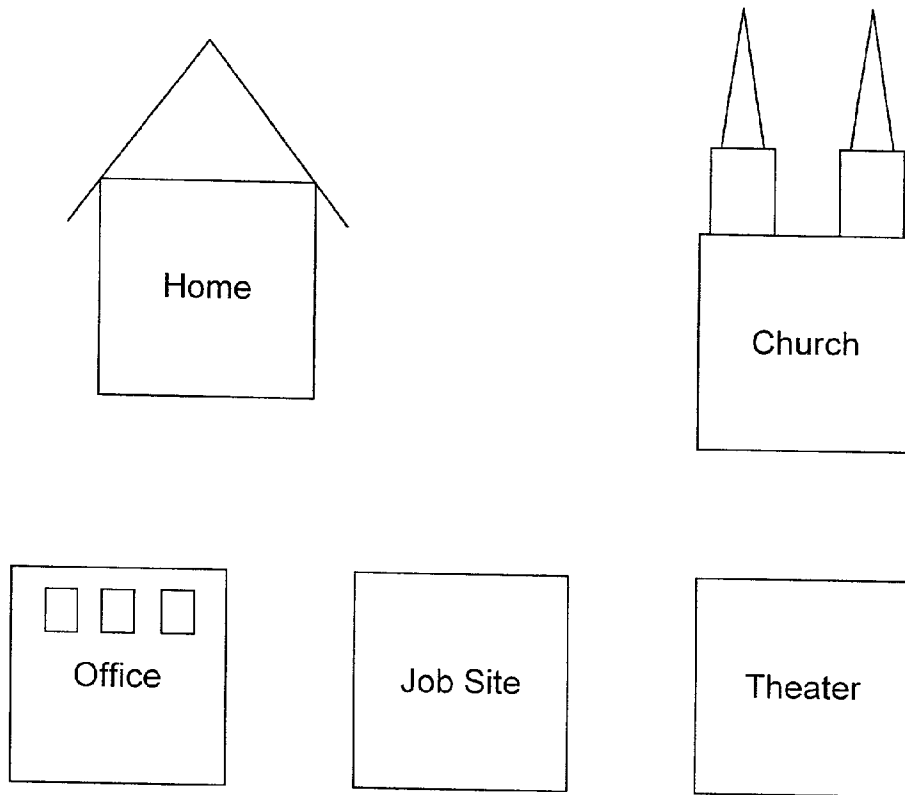


FIG. 3

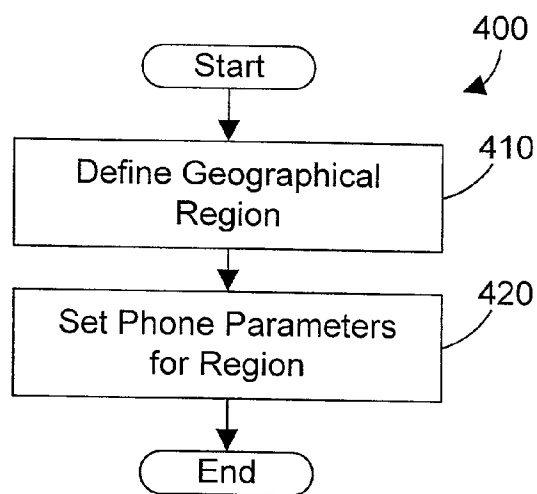


FIG. 4

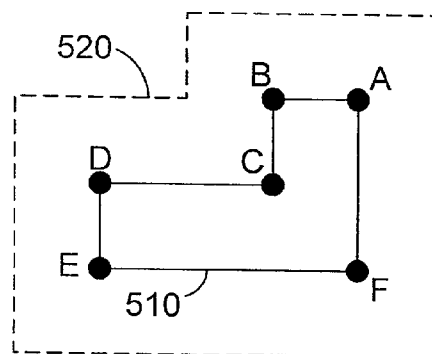


FIG. 5

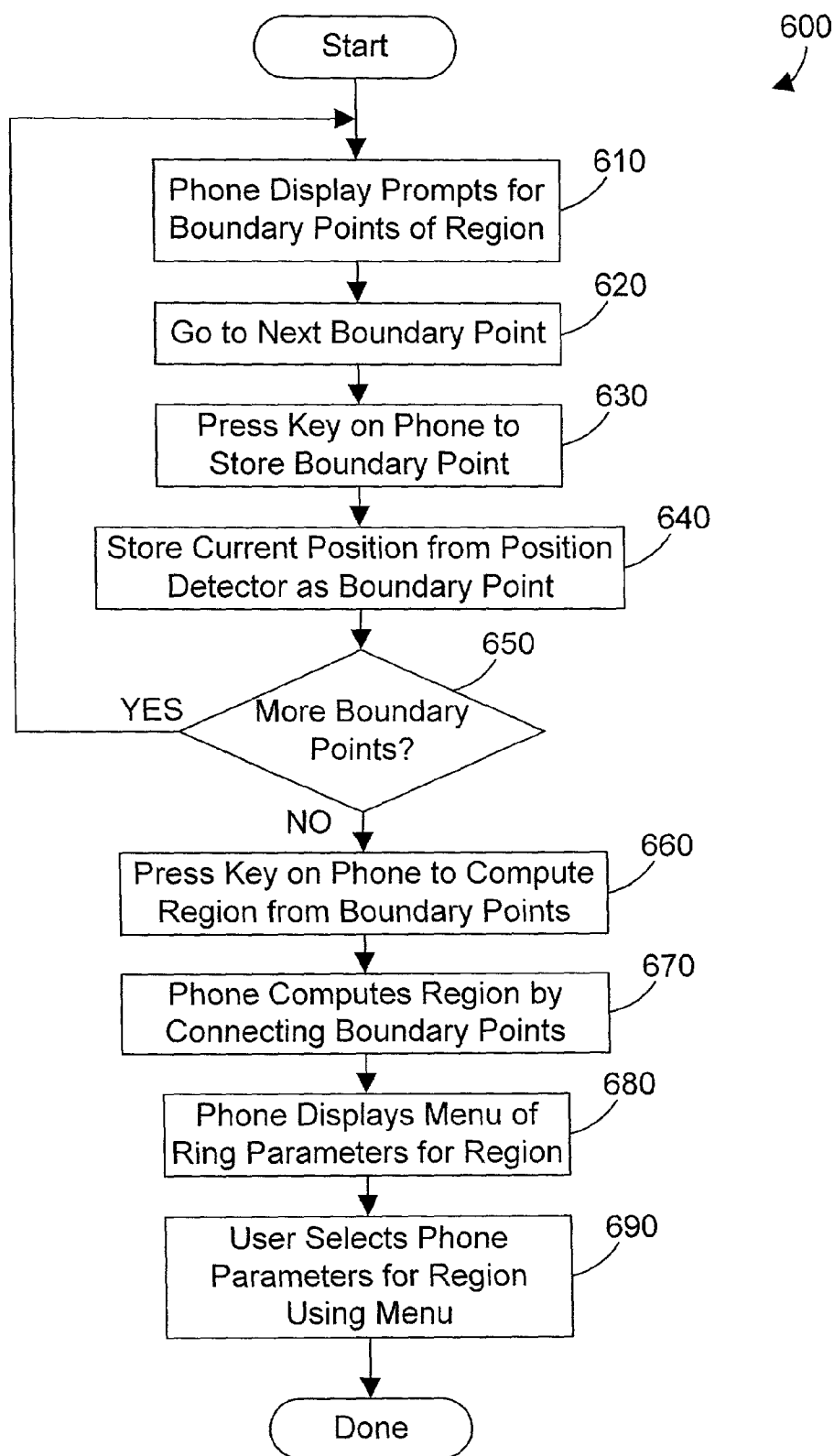
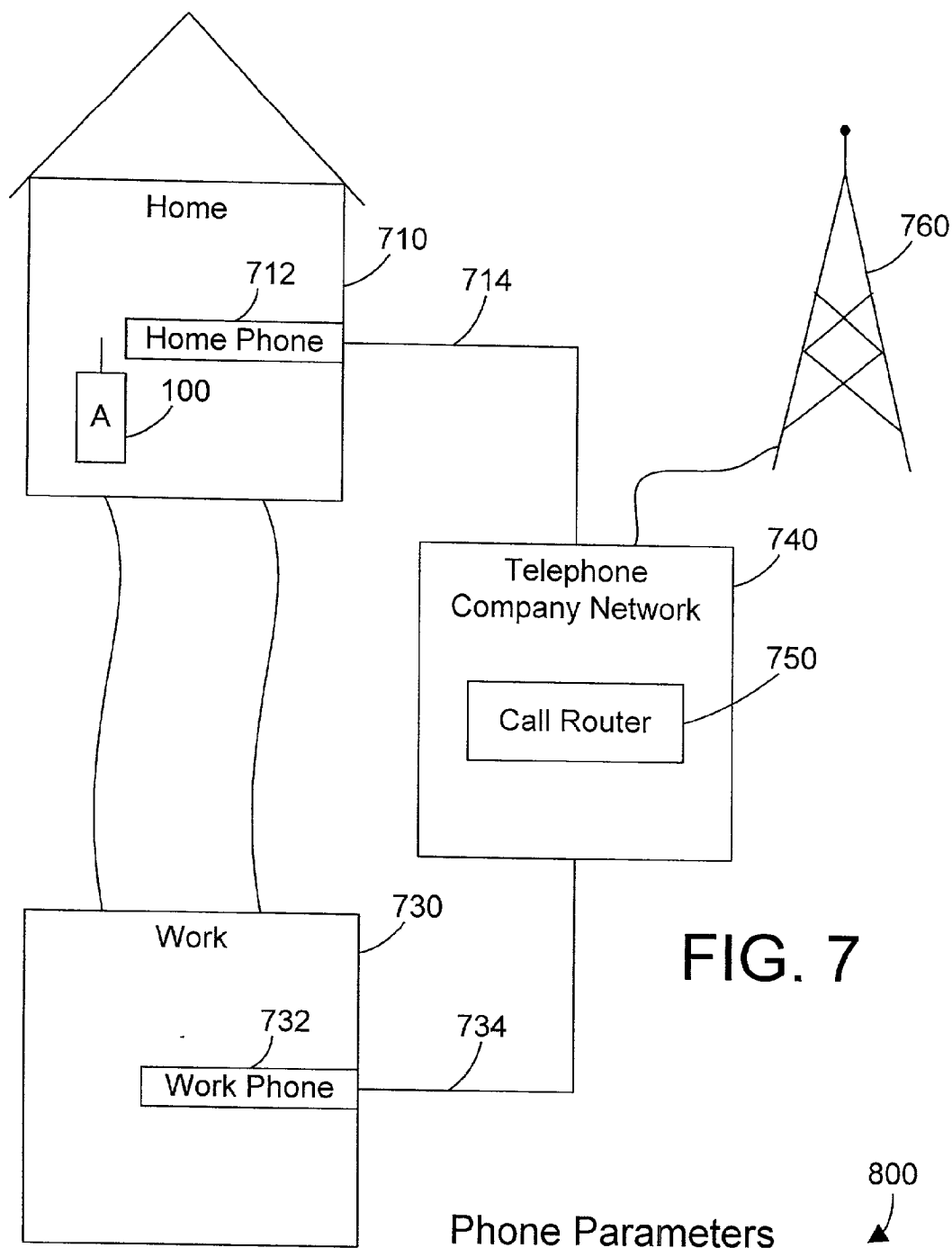


FIG. 6



Phone Parameters

Region	Allowed #s	Current #s
Home	555-0011 855-1234	555-0011 855-1234
Work	555-2233 855-1234	555-2233

FIG. 8



Explore Litigation Insights

Docket Alarm provides insights to develop a more informed litigation strategy and the peace of mind of knowing you're on top of things.

Real-Time Litigation Alerts



Keep your litigation team up-to-date with **real-time alerts** and advanced team management tools built for the enterprise, all while greatly reducing PACER spend.

Our comprehensive service means we can handle Federal, State, and Administrative courts across the country.

Advanced Docket Research



With over 230 million records, Docket Alarm's cloud-native docket research platform finds what other services can't. Coverage includes Federal, State, plus PTAB, TTAB, ITC and NLRB decisions, all in one place.

Identify arguments that have been successful in the past with full text, pinpoint searching. Link to case law cited within any court document via Fastcase.

Analytics At Your Fingertips



Learn what happened the last time a particular judge, opposing counsel or company faced cases similar to yours.

Advanced out-of-the-box PTAB and TTAB analytics are always at your fingertips.

API

Docket Alarm offers a powerful API (application programming interface) to developers that want to integrate case filings into their apps.

LAW FIRMS

Build custom dashboards for your attorneys and clients with live data direct from the court.

Automate many repetitive legal tasks like conflict checks, document management, and marketing.

FINANCIAL INSTITUTIONS

Litigation and bankruptcy checks for companies and debtors.

E-DISCOVERY AND LEGAL VENDORS

Sync your system to PACER to automate legal marketing.