



(12) **United States Patent**
Doctor et al.

(10) **Patent No.:** **US 10,944,811 B2**
(45) **Date of Patent:** **Mar. 9, 2021**

(54) **HYBRID CLOUD NETWORK MONITORING SYSTEM FOR TENANT USE**

(71) Applicant: **VMware, Inc.**, Palo Alto, CA (US)

(72) Inventors: **Brad Doctor**, Broomfield, CO (US);
Matt Probst, Orem, UT (US)

(73) Assignee: **VMware, Inc.**, Palo Alto, CA (US)

(*) Notice: Subject to any disclaimer, the term of this patent is extended or adjusted under 35 U.S.C. 154(b) by 46 days.

(21) Appl. No.: **15/846,133**

(22) Filed: **Dec. 18, 2017**

(65) **Prior Publication Data**

US 2018/0109602 A1 Apr. 19, 2018

Related U.S. Application Data

(63) Continuation of application No. 14/579,911, filed on Dec. 22, 2014, now Pat. No. 9,860,309.

(51) **Int. Cl.**

H04L 29/08 (2006.01)

H04L 12/46 (2006.01)

H04L 12/26 (2006.01)

(52) **U.S. Cl.**

CPC **H04L 67/10** (2013.01); **H04L 12/4633** (2013.01); **H04L 43/062** (2013.01); **H04L 43/12** (2013.01)

(58) **Field of Classification Search**

CPC ... H04L 67/10; H04L 12/4633; H04L 43/062; H04L 43/12

USPC 709/224

See application file for complete search history.

(56) **References Cited**

U.S. PATENT DOCUMENTS

7,899,048 B1 * 3/2011 Walker H04L 43/18 370/390
8,547,972 B2 * 10/2013 Mahdavi G06F 9/455 370/389
8,645,952 B2 * 2/2014 Biswas H04L 49/208 718/1
8,665,747 B2 * 3/2014 Elsen H04L 45/18 370/254
8,879,554 B2 * 11/2014 Emmadi H04L 49/30 370/389
8,996,691 B1 * 3/2015 Stickle H04L 12/40071 709/224
9,397,960 B2 * 7/2016 Arad H04L 49/355

(Continued)

Primary Examiner — Esther B. Henderson

Assistant Examiner — Nazia Naoreen

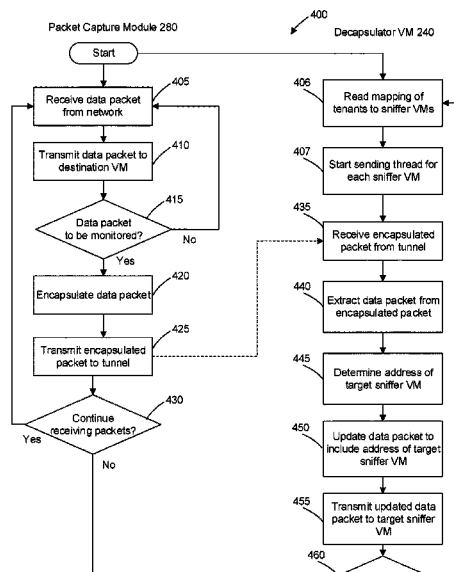
(74) *Attorney, Agent, or Firm* — Loza & Loza, LLP

(57)

ABSTRACT

Network traffic in a cloud computing system is monitored in response to a request to capture network traffic of a tenant port of a first virtual machine (VM) executing in the cloud computing system, wherein the first VM is associated with a first tenant organization different from a second organization managing the cloud computing system. A decapsulating VM having a first network interface and a second network interface is instantiated, wherein the decapsulating VM is inaccessible to the first tenant organization. An encapsulated port mirroring session from the tenant port of the first VM to the first network interface of the decapsulating VM is then established. A plurality of packets comprising captured network traffic received via the encapsulated port mirroring session are decapsulated, and the captured network traffic is forwarded via the second network interface of the decapsulating VM to a sniffer VM.

14 Claims, 4 Drawing Sheets



(56)

References Cited

U.S. PATENT DOCUMENTS

2014/0185616	A1 *	7/2014	Bloch	H04L 12/4633	370/392
2014/0279885	A1 *	9/2014	Anantharam	H04L 5/0055	707/622
2015/0139232	A1 *	5/2015	Yalagandula	G06F 9/45558	370/392

* cited by examiner

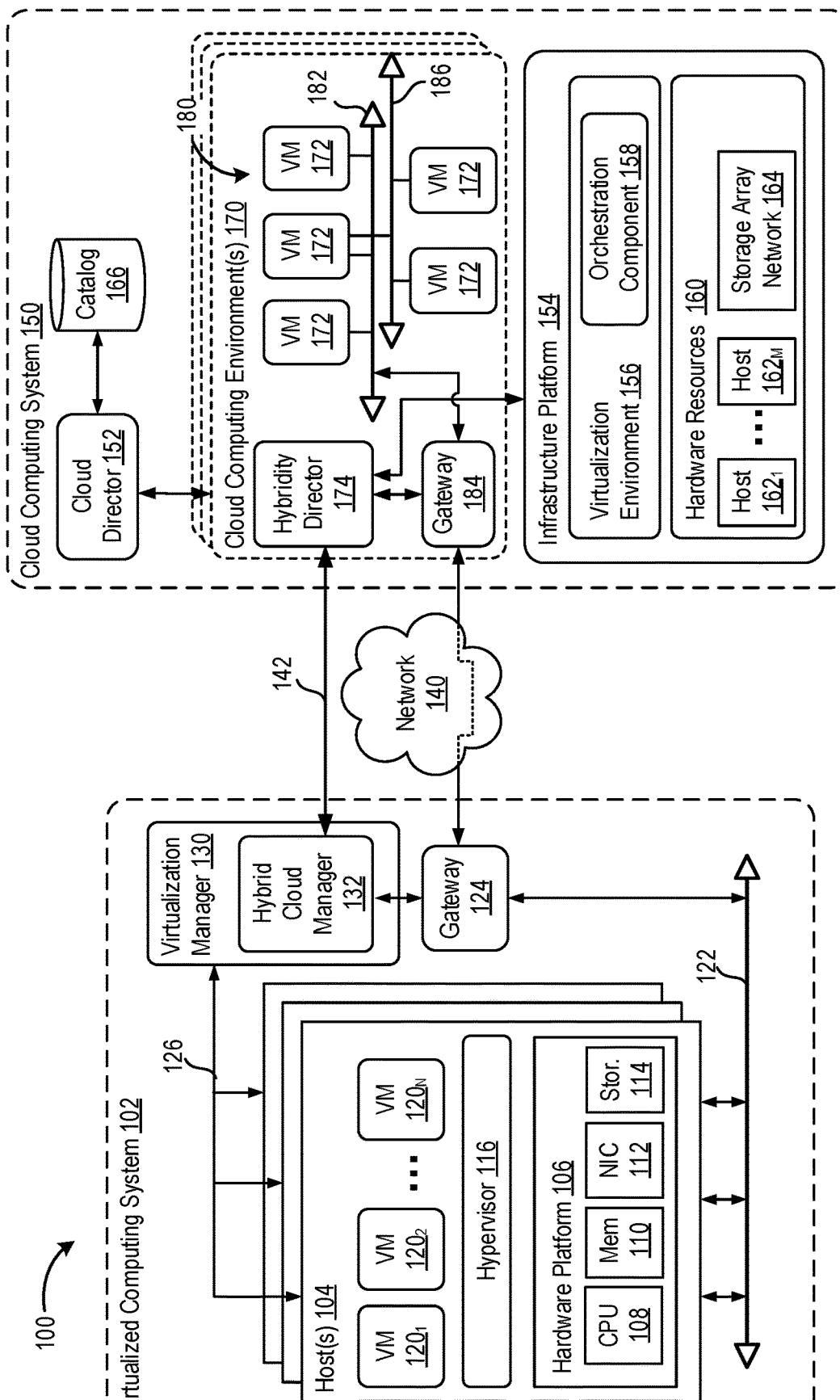


FIG. 1

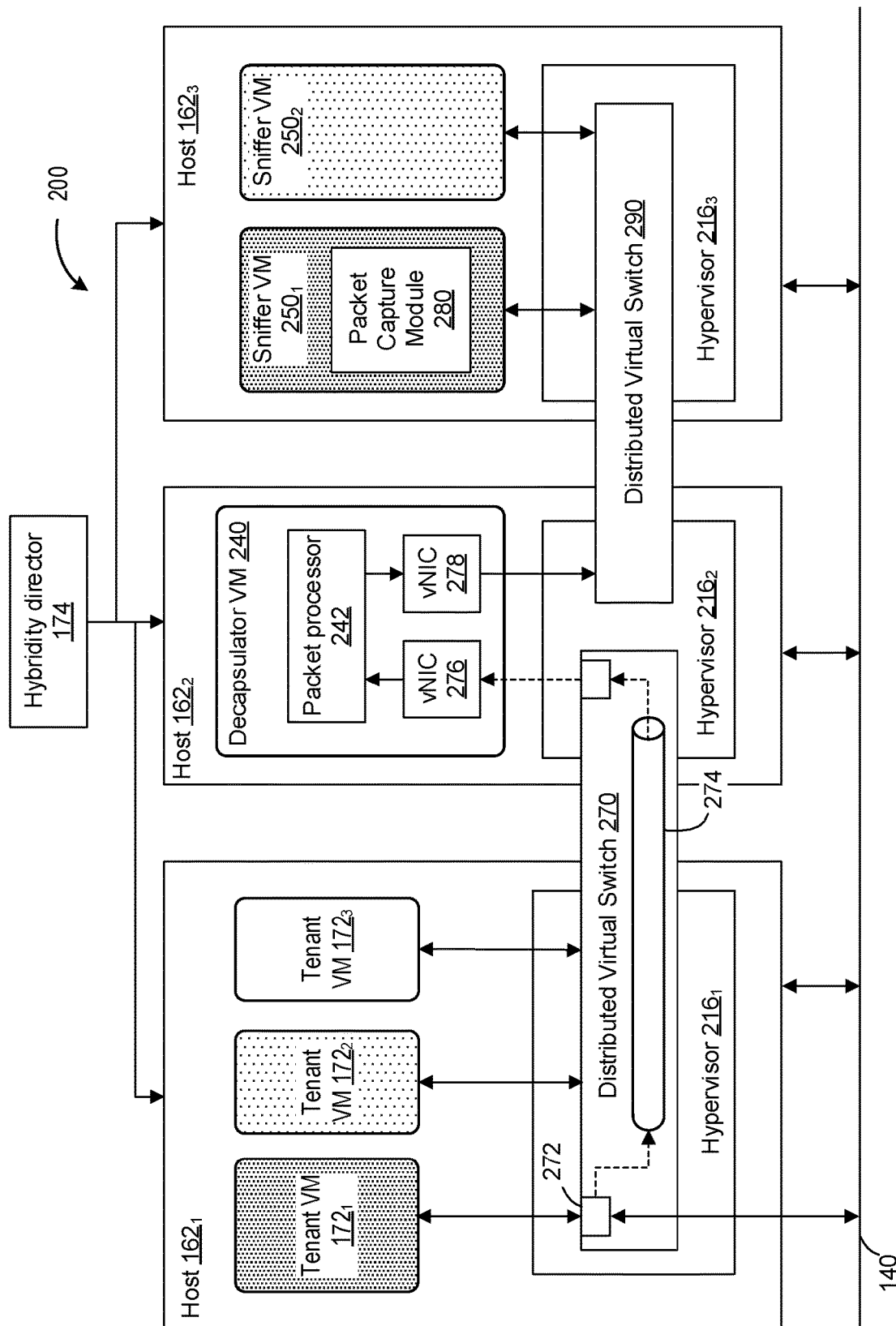


FIG. 2

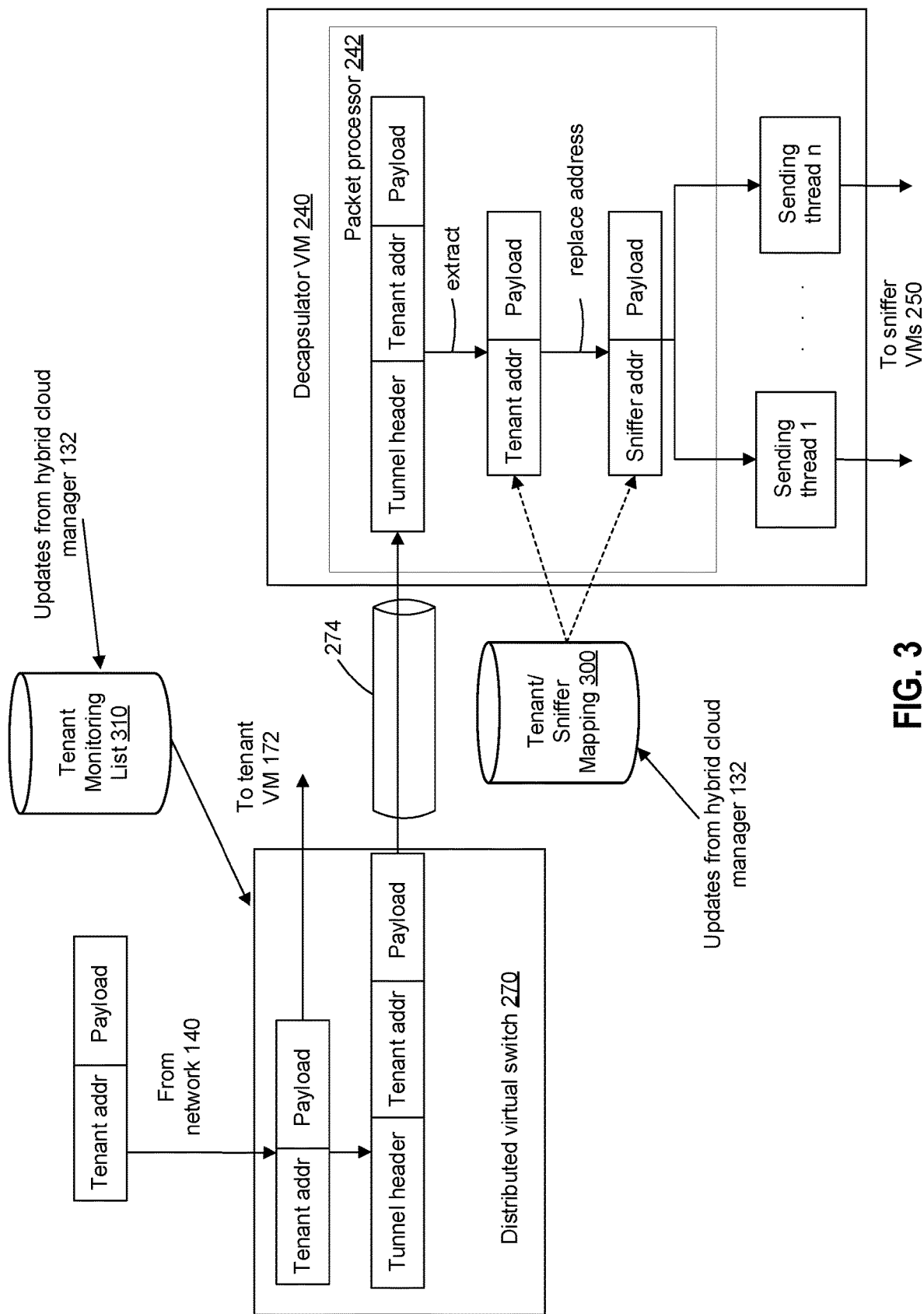


FIG. 3

Explore Litigation Insights

Docket Alarm provides insights to develop a more informed litigation strategy and the peace of mind of knowing you're on top of things.

Real-Time Litigation Alerts



Keep your litigation team up-to-date with **real-time alerts** and advanced team management tools built for the enterprise, all while greatly reducing PACER spend.

Our comprehensive service means we can handle Federal, State, and Administrative courts across the country.

Advanced Docket Research



With over 230 million records, Docket Alarm's cloud-native docket research platform finds what other services can't. Coverage includes Federal, State, plus PTAB, TTAB, ITC and NLRB decisions, all in one place.

Identify arguments that have been successful in the past with full text, pinpoint searching. Link to case law cited within any court document via Fastcase.

Analytics At Your Fingertips



Learn what happened the last time a particular judge, opposing counsel or company faced cases similar to yours.

Advanced out-of-the-box PTAB and TTAB analytics are always at your fingertips.

API

Docket Alarm offers a powerful API (application programming interface) to developers that want to integrate case filings into their apps.

LAW FIRMS

Build custom dashboards for your attorneys and clients with live data direct from the court.

Automate many repetitive legal tasks like conflict checks, document management, and marketing.

FINANCIAL INSTITUTIONS

Litigation and bankruptcy checks for companies and debtors.

E-DISCOVERY AND LEGAL VENDORS

Sync your system to PACER to automate legal marketing.