

[54] **PROCESS FOR PRODUCING A SHOE-SHAPED PART FROM A WEB OF MATERIAL AND RESULTING SHOE-SHAPED PART**

[75] Inventor: Mamoru Nishida, Taichung, Taiwan

[73] Assignee: Tretorn AB, Helsingborg, Sweden

[21] Appl. No.: 80,071

[22] Filed: Jun. 23, 1993

Related U.S. Application Data

[63] Continuation of Ser. No. 899,690, Jun. 17, 1992, abandoned.

Foreign Application Priority Data

Jun. 17, 1991 [JP] Japan 4119911

[51] Int. Cl.⁵ A43D 8/00

[52] U.S. Cl. 12/146 C; 36/45

[58] Field of Search 36/45, 47, 48, 49;
12/142 G, 146 C

[56] **References Cited**

U.S. PATENT DOCUMENTS

217,467	7/1879	Lee	36/47
336,214	2/1886	Cosart	36/47 X
336,913	3/1886	Graff	36/48 X
505,298	9/1893	Scarinci	36/48
511,942	1/1894	Glanville	36/43
761,520	5/1904	Matthew	12/146 C
1,021,819	4/1912	Brihay	36/45
1,710,043	4/1929	Campbell	12/146 C X
1,956,969	5/1934	Ayers	36/45 X
2,001,962	5/1935	Kantrow	36/45 X
2,076,285	4/1937	Wiggin	36/48 X
2,300,155	10/1942	Heintz	36/45 X
3,114,213	12/1963	Bowers	36/49 X

FOREIGN PATENT DOCUMENTS

1674135	12/1953	Fed. Rep. of Germany	
0021947	7/1900	France	36/47
627878	5/1930	France	
858875	12/1940	France	
862088	2/1941	France	
1024102	3/1953	France	36/48
1028693	5/1953	France	36/48
537540	12/1955	Italy	36/48
6400090	7/1965	Netherlands	
8400651	2/1984	Netherlands	
0016092	of 1894	United Kingdom	36/47
410311	5/1934	United Kingdom	
1539886	2/1979	United Kingdom	36/49

Primary Examiner—Paul T. Sewell

Assistant Examiner—Ted Kavanaugh

Attorney, Agent, or Firm—Sixbey, Friedman, Leedom & Ferguson

[57] **ABSTRACT**

For the production of a shoe upper by cutting out of the shoe upper in the form of a layout from a web of material, shaping of the shoe upper with connection of material parts of the layout with formation of seams, a process is used by which such shoe uppers can be produced in a timesaving and efficient manner despite the many individual parts present or to be made visible. For this purpose, a web of material (1) is used to produce layouts (2) by different production measures, such as different styles, yarn material, color, material thickness, single layer or multilayer type of material or the like, at the same time with the production of web of material (1), and with a sole part attached to the layout. The layout is cut from the web as a unit with the sole part and processed into a shoe part having an upper and sole part.

20 Claims, 4 Drawing Sheets

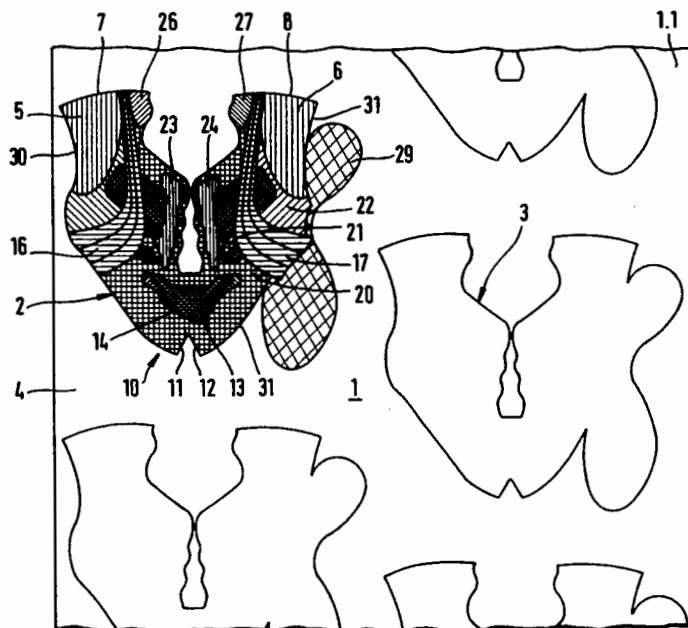
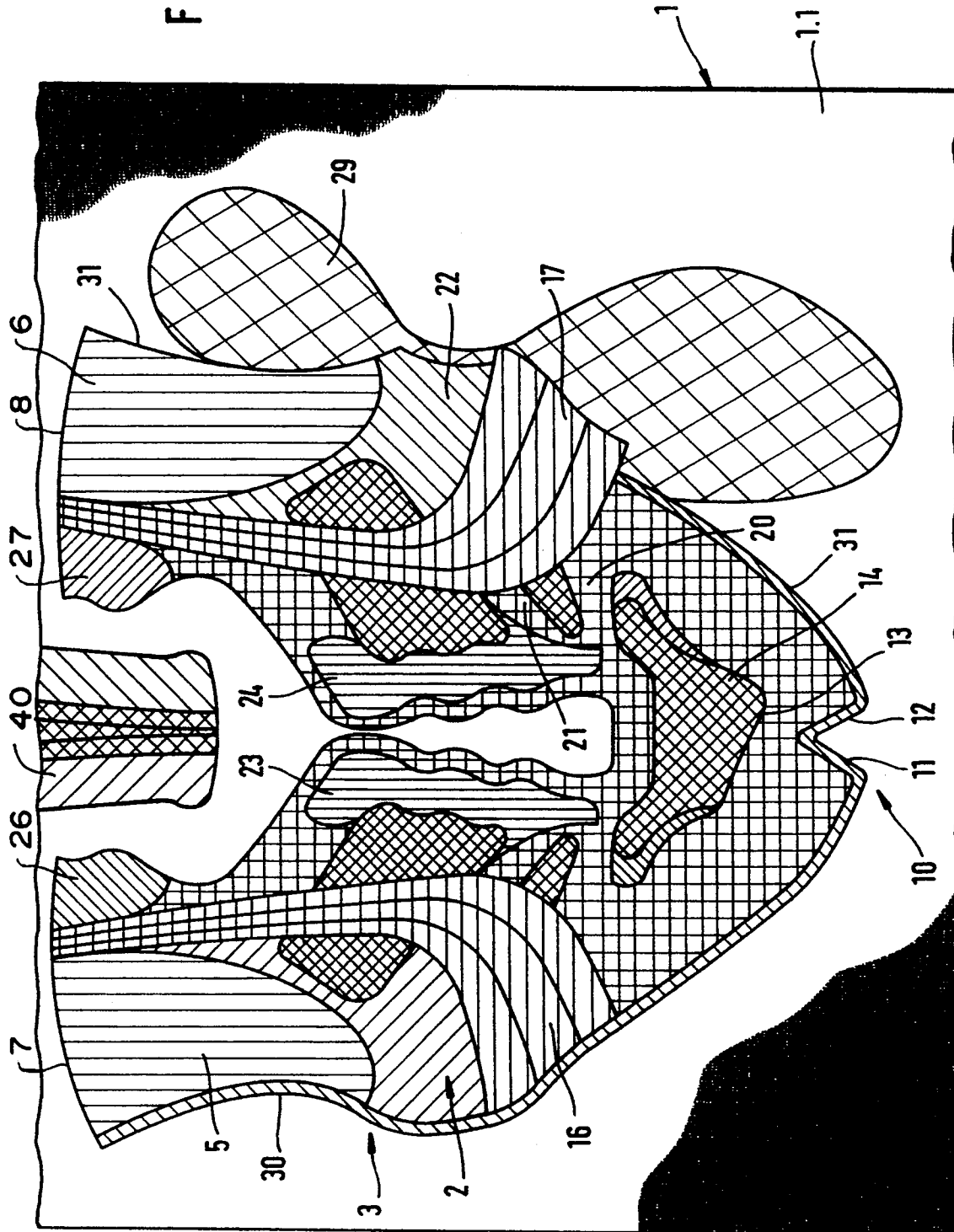
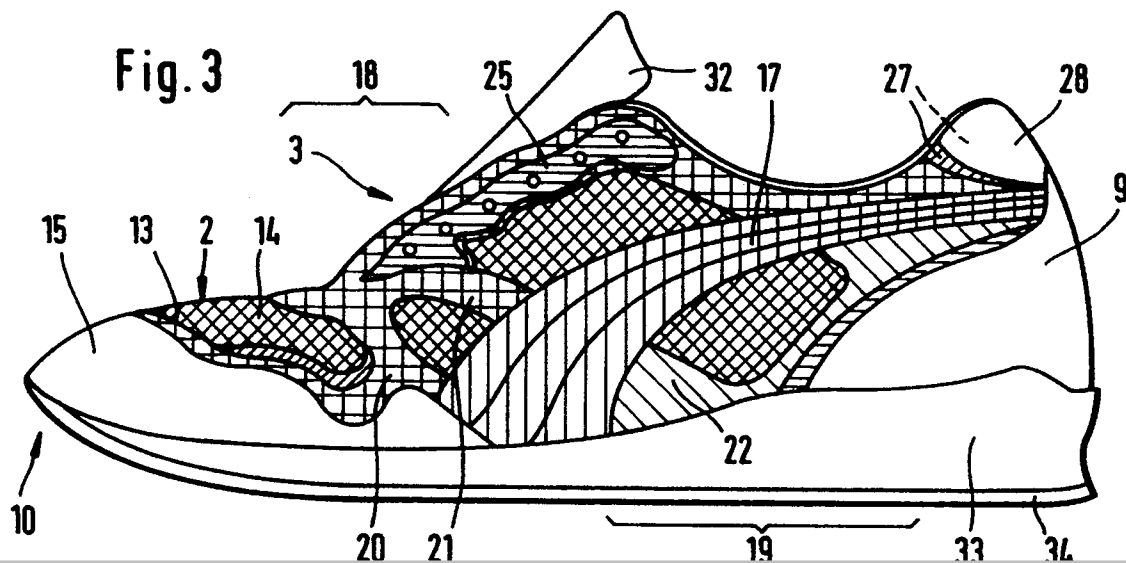
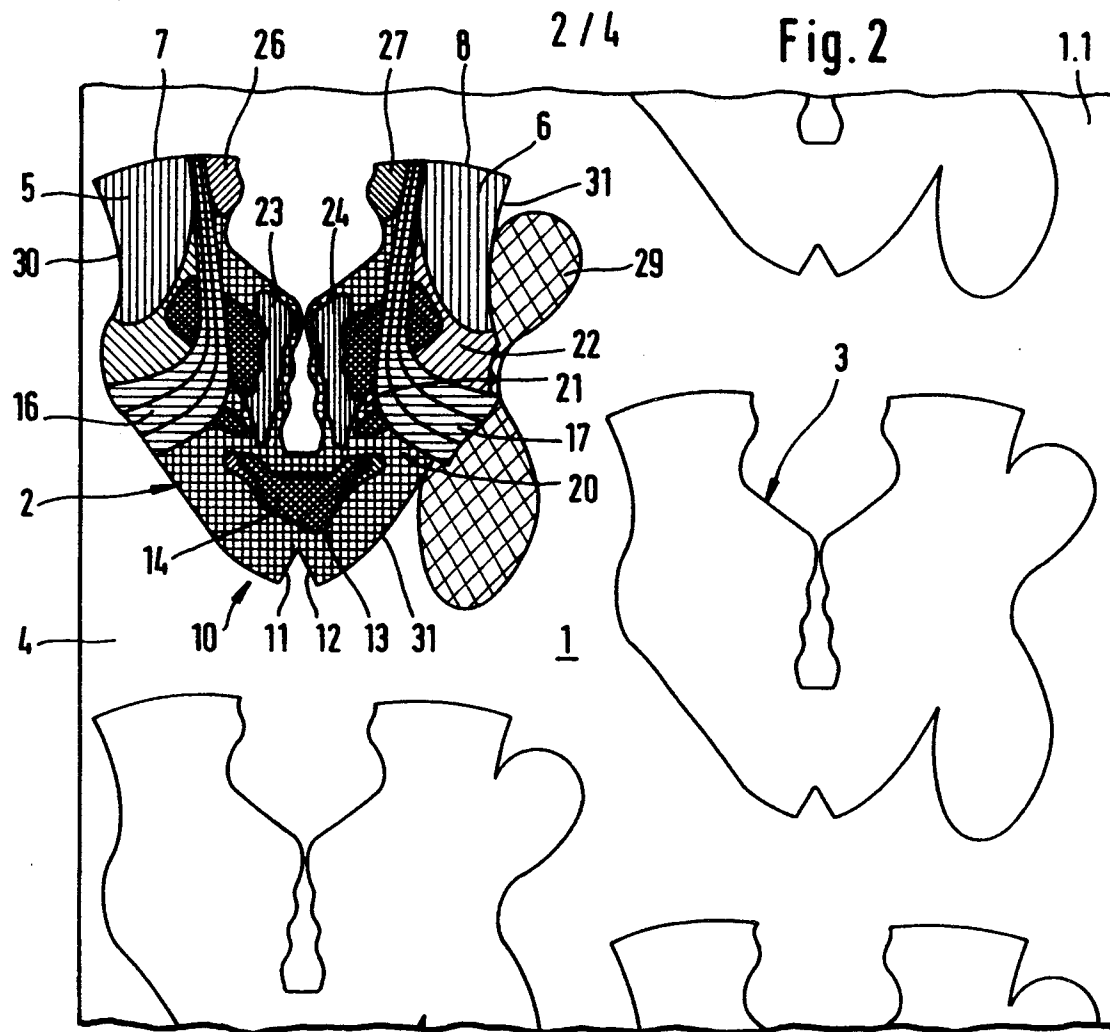


Fig. 1





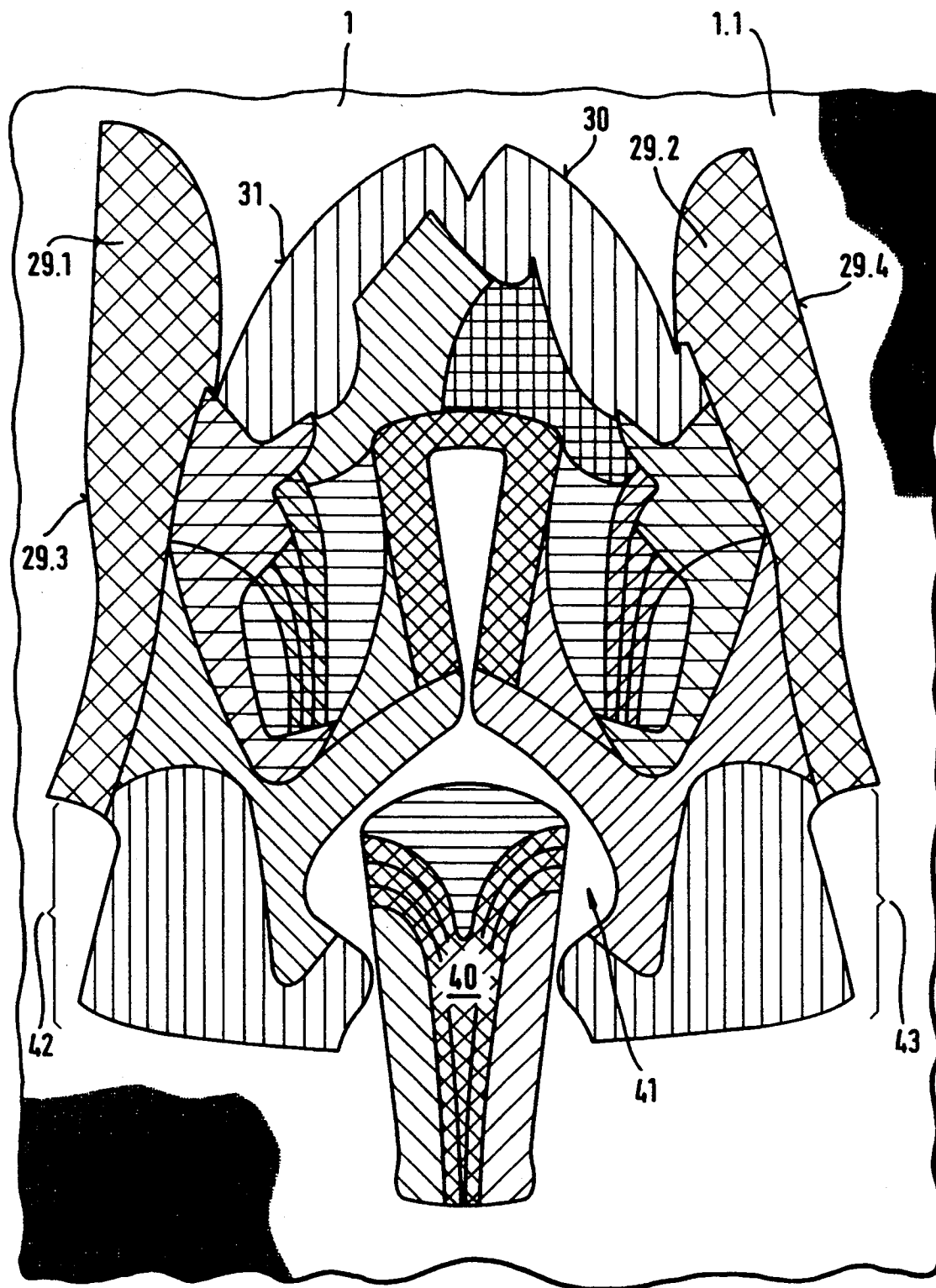


Fig. 4

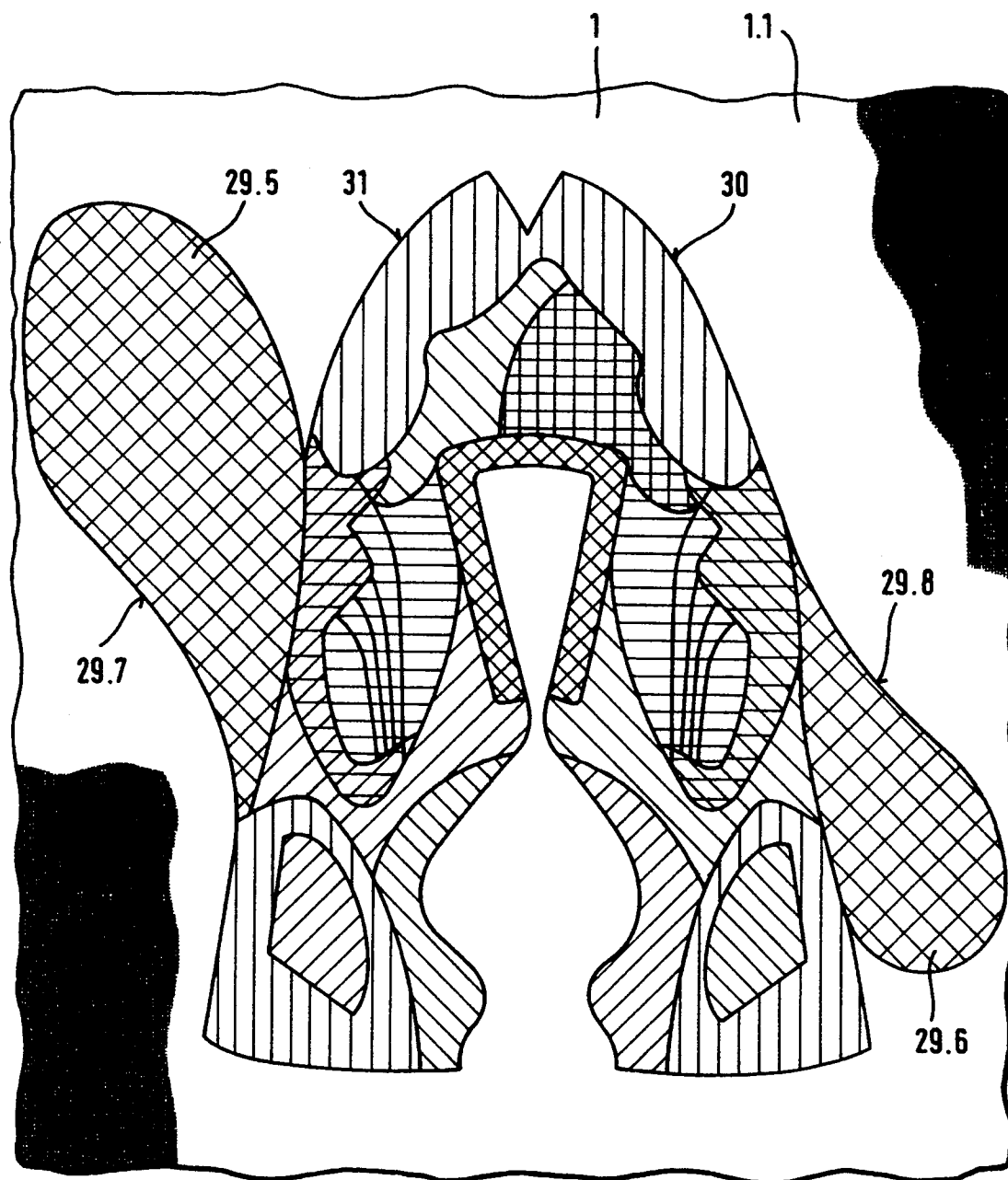


Fig. 5

Explore Litigation Insights

Docket Alarm provides insights to develop a more informed litigation strategy and the peace of mind of knowing you're on top of things.

Real-Time Litigation Alerts



Keep your litigation team up-to-date with **real-time alerts** and advanced team management tools built for the enterprise, all while greatly reducing PACER spend.

Our comprehensive service means we can handle Federal, State, and Administrative courts across the country.

Advanced Docket Research



With over 230 million records, Docket Alarm's cloud-native docket research platform finds what other services can't. Coverage includes Federal, State, plus PTAB, TTAB, ITC and NLRB decisions, all in one place.

Identify arguments that have been successful in the past with full text, pinpoint searching. Link to case law cited within any court document via Fastcase.

Analytics At Your Fingertips



Learn what happened the last time a particular judge, opposing counsel or company faced cases similar to yours.

Advanced out-of-the-box PTAB and TTAB analytics are always at your fingertips.

API

Docket Alarm offers a powerful API (application programming interface) to developers that want to integrate case filings into their apps.

LAW FIRMS

Build custom dashboards for your attorneys and clients with live data direct from the court.

Automate many repetitive legal tasks like conflict checks, document management, and marketing.

FINANCIAL INSTITUTIONS

Litigation and bankruptcy checks for companies and debtors.

E-DISCOVERY AND LEGAL VENDORS

Sync your system to PACER to automate legal marketing.