



US007159184B2

(12) **United States Patent**
Ullah et al.

(10) **Patent No.:** **US 7,159,184 B2**
(45) **Date of Patent:** **Jan. 2, 2007**

(54) **METHOD AND GRAPHICAL USER INTERFACE FOR CREATING A CONFIGURATION FILE USED TO ALLOCATE COMPUTER SYSTEM RESOURCES AMONG WORKLOADS**

(75) Inventors: **Syed S. Ullah**, Irving, TX (US);
Michael D. Murphy, Allen, TX (US)

(73) Assignee: **Hewlett-Packard Development Company, L.P.**, Houston, TX (US)

(*) Notice: Subject to any disclaimer, the term of this patent is extended or adjusted under 35 U.S.C. 154(b) by 645 days.

(21) Appl. No.: **10/207,874**

(22) Filed: **Jul. 31, 2002**

(65) **Prior Publication Data**

US 2004/0021678 A1 Feb. 5, 2004

(51) **Int. Cl.**

G06F 3/01 (2006.01)

G06F 17/40 (2006.01)

G06F 12/02 (2006.01)

G06F 3/048 (2006.01)

(52) **U.S. Cl.** **715/762**; 715/771; 715/779;
715/966; 715/970; 717/121; 711/170

(58) **Field of Classification Search** 717/104-105,
717/121, 109-110, 1; 710/10, 29; 715/762,
715/771, 779, 966, 970; 711/170

See application file for complete search history.

(56) **References Cited**

U.S. PATENT DOCUMENTS

5,428,791 A * 6/1995 Andrew et al. 717/121

5,924,101 A * 7/1999 Bach et al. 707/103 R
6,053,951 A 4/2000 McDonald et al.
6,266,658 B1 7/2001 Adya et al.
6,295,531 B1 9/2001 Bae et al.
6,341,361 B1 1/2002 Basto et al.
6,396,516 B1 5/2002 Beatty
2004/0015949 A1* 1/2004 Taylor 717/171

OTHER PUBLICATIONS

Nick et al., OS/390 Newsletter, Aug. 2000, Issue 3, pp. 1-118.*
WSC Performance Team (IBM), Workload Management Overview, Feb. 2002, pp. 1-75.*
WSC Performance Team (IBM), WLM Operational Considerations, Jul. 2000, pp. 1-25.*

* cited by examiner

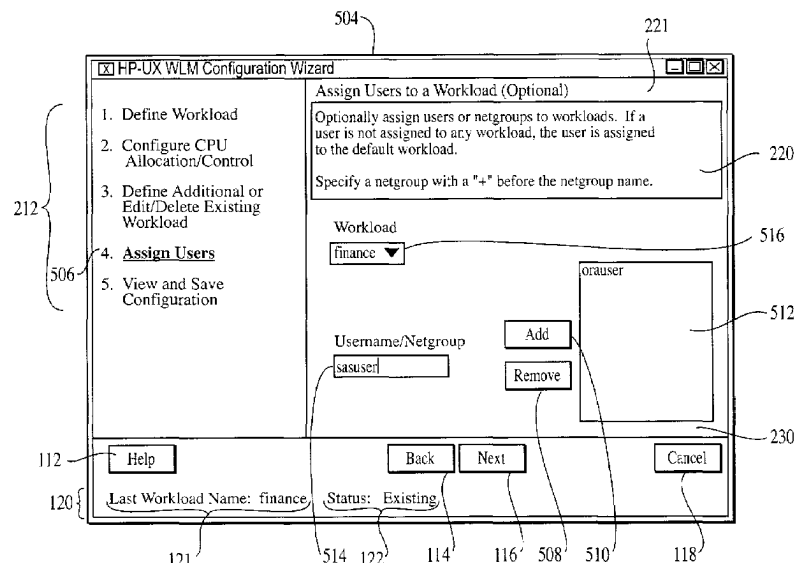
Primary Examiner—Raymond J. Bayerl

Assistant Examiner—Namitha Pillai

(57) **ABSTRACT**

A method is disclosed for creating a configuration file for use with a resource allocator that allocates computer system resources, such as CPU resources, among workloads operating on the system. A software application referred to as a "wizard" generates a graphical user interface (GUI) having multiple linked input screens to prompt a user step-by-step to enter specifications for the workloads. The GUI displays a prompt for a user to define a workload and to configure a resource allocation policy for the defined workload. The CPU resource allocation policy specifies how resources are allocated to the defined workload. The wizard receives the requested specifications from a user input device. Based on the received specifications, a configuration file is created and may be used by a resource allocator to allocate resources among workloads according to the specifications.

25 Claims, 31 Drawing Sheets



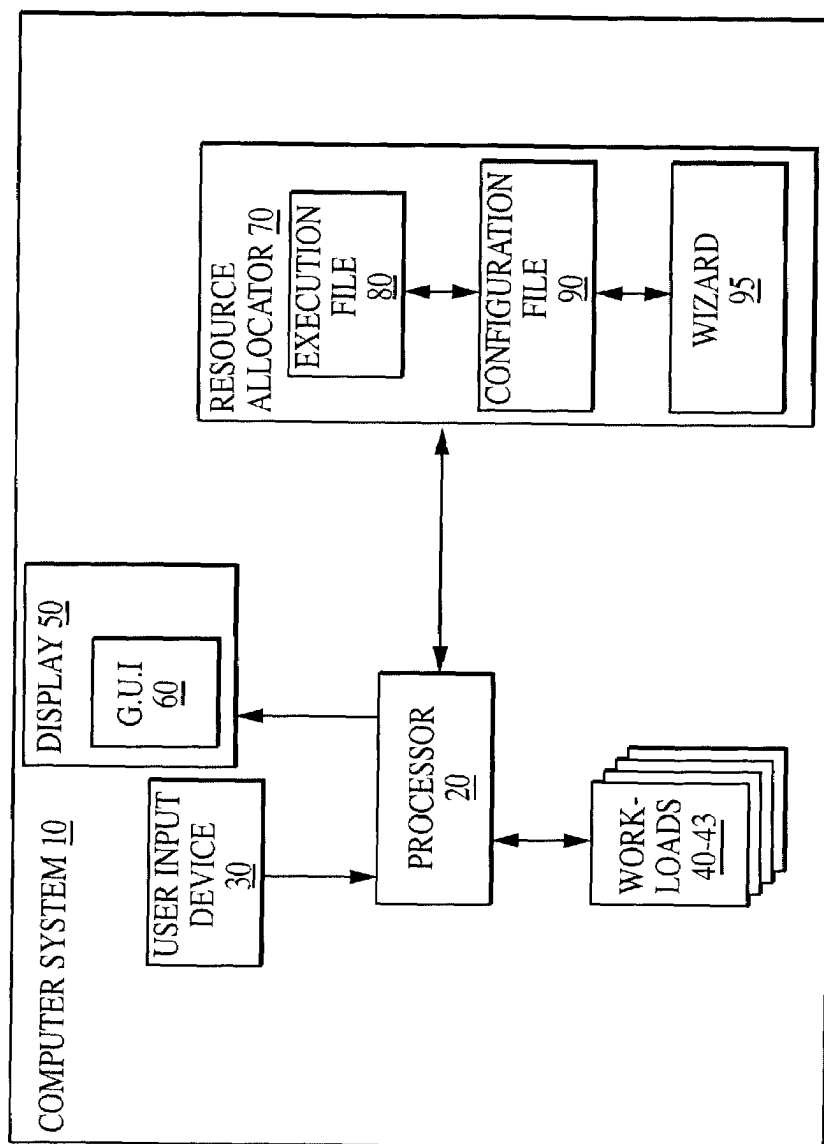


FIG. 1

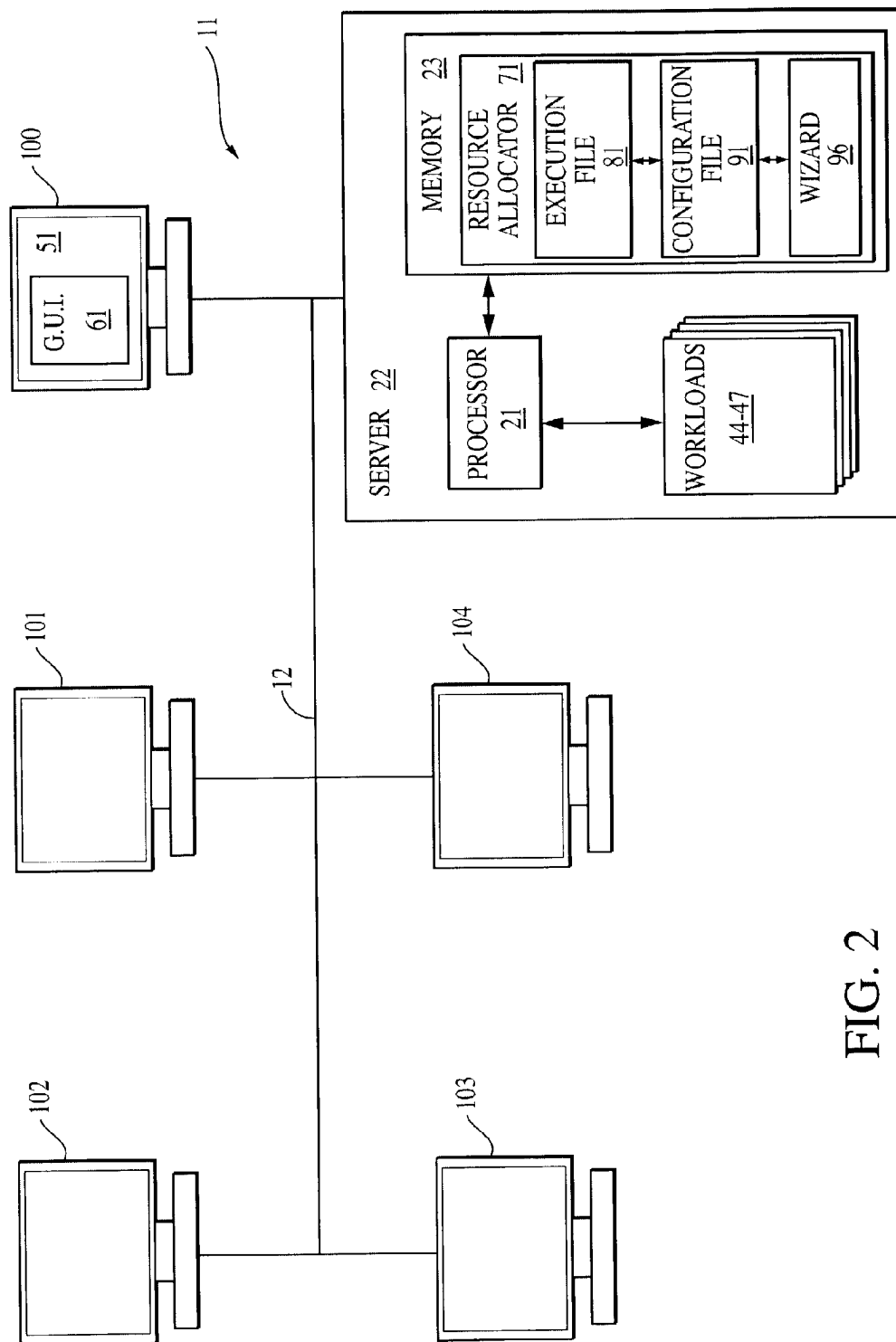


FIG. 2

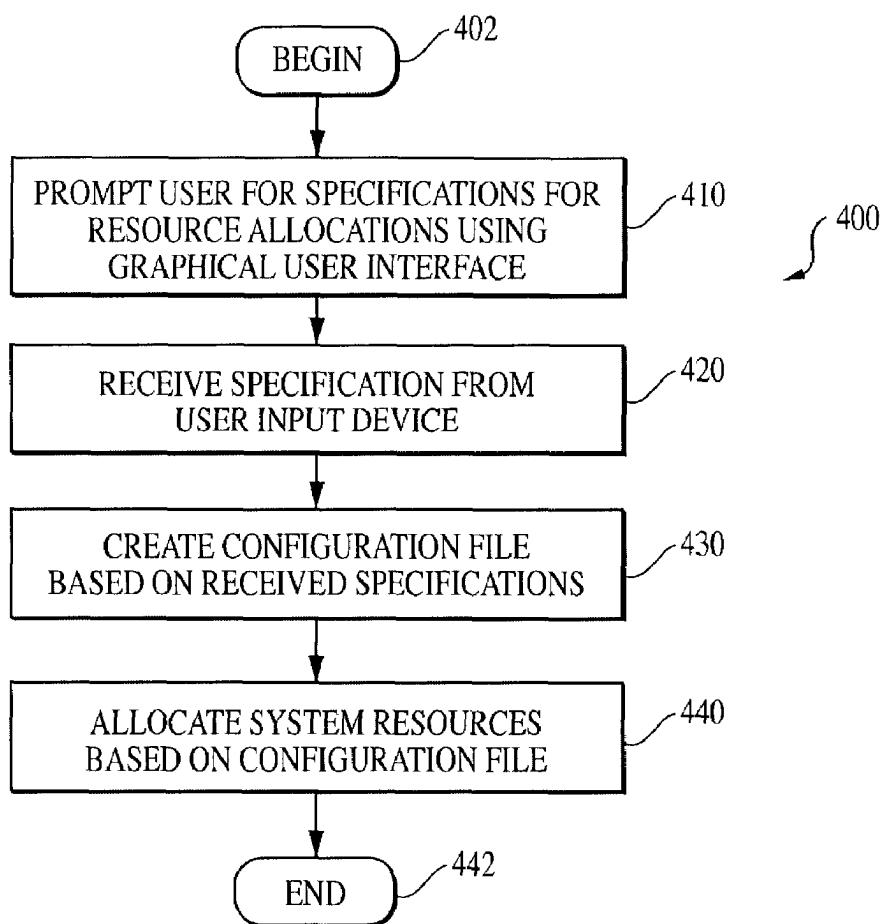


FIG. 3

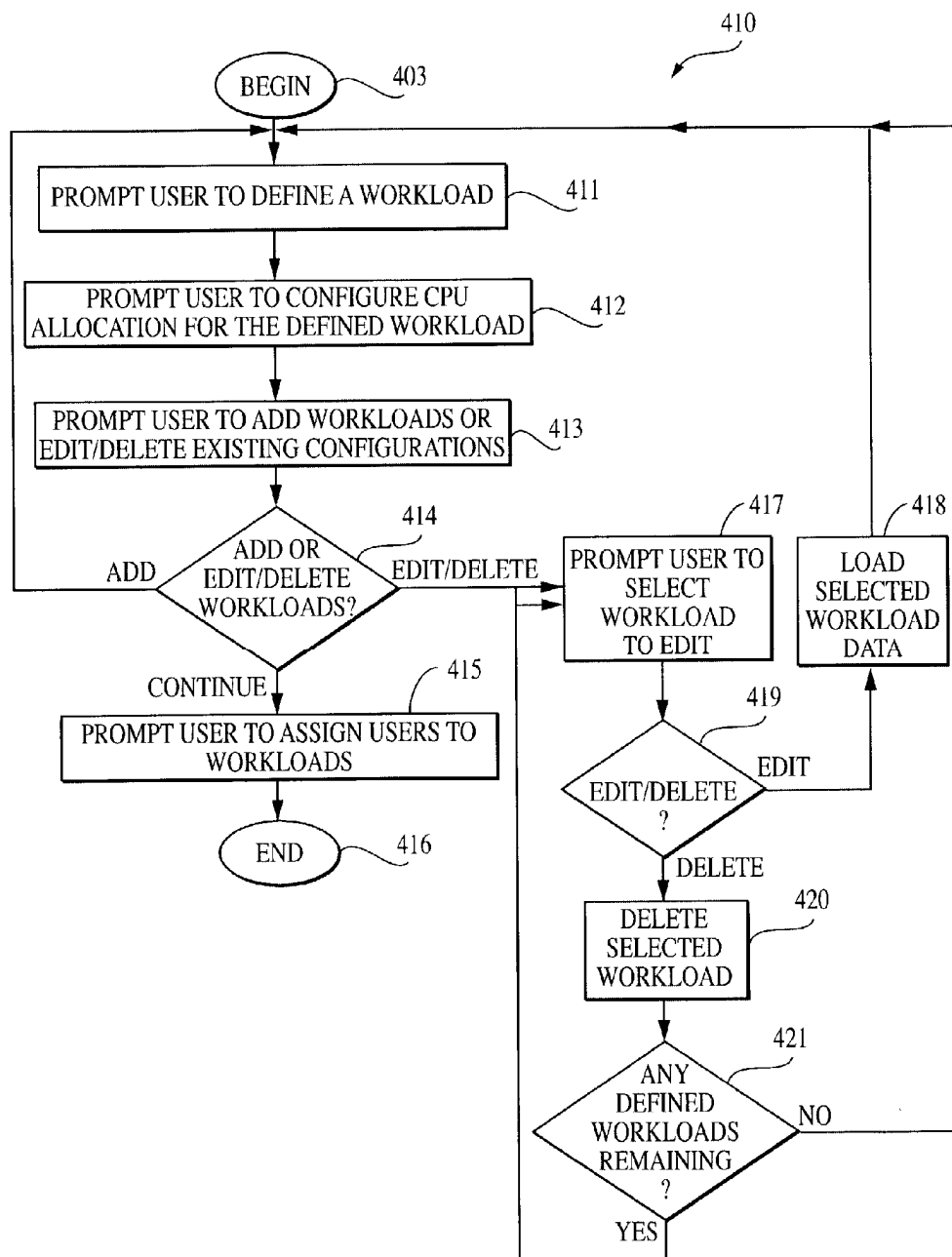


FIG. 4

Explore Litigation Insights

Docket Alarm provides insights to develop a more informed litigation strategy and the peace of mind of knowing you're on top of things.

Real-Time Litigation Alerts



Keep your litigation team up-to-date with **real-time alerts** and advanced team management tools built for the enterprise, all while greatly reducing PACER spend.

Our comprehensive service means we can handle Federal, State, and Administrative courts across the country.

Advanced Docket Research



With over 230 million records, Docket Alarm's cloud-native docket research platform finds what other services can't. Coverage includes Federal, State, plus PTAB, TTAB, ITC and NLRB decisions, all in one place.

Identify arguments that have been successful in the past with full text, pinpoint searching. Link to case law cited within any court document via Fastcase.

Analytics At Your Fingertips



Learn what happened the last time a particular judge, opposing counsel or company faced cases similar to yours.

Advanced out-of-the-box PTAB and TTAB analytics are always at your fingertips.

API

Docket Alarm offers a powerful API (application programming interface) to developers that want to integrate case filings into their apps.

LAW FIRMS

Build custom dashboards for your attorneys and clients with live data direct from the court.

Automate many repetitive legal tasks like conflict checks, document management, and marketing.

FINANCIAL INSTITUTIONS

Litigation and bankruptcy checks for companies and debtors.

E-DISCOVERY AND LEGAL VENDORS

Sync your system to PACER to automate legal marketing.