



US005675831A

**United States Patent** [19][11] **Patent Number:** **5,675,831****Caputo**[45] **Date of Patent:** **Oct. 7, 1997**

[54] **METHOD FOR AUTOMATIC  
INSTALLATION OF A MODEM WHEREIN  
UNIQUE IDENTIFICATION FOR THE  
DEVICE REGISTRY IS COMPUTED FROM  
MODEM RESPONSES TO QUERIES BY THE  
SYSTEM**

[75] **Inventor:** Christopher P. Caputo, Redmond,  
Wash.

[73] **Assignee:** Microsoft Corporation, Redmond,  
Wash.

[21] **Appl. No.:** 486,959

[22] **Filed:** Jun. 7, 1995

#### Related U.S. Application Data

[63] Continuation of Ser. No. 356,059, Dec. 13, 1994.

[51] **Int. Cl.<sup>6</sup>** ..... G06F 9/00; G06F 13/10

[52] **U.S. Cl.** ..... 395/830; 395/421.06; 395/281;  
395/828; 395/829; 395/866; 395/882; 395/884;  
395/898; 364/284.2; 364/280.9; 364/947.5;  
364/951.1

[58] **Field of Search** ..... 364/238.5, 929,  
364/222.2, 280.2, 284, 231; 395/828, 835,  
836, 882, 883, 413, 419, 421.06, 421.07,  
884, 892

#### References Cited

##### U.S. PATENT DOCUMENTS

3,754,217 8/1973 Bell et al. .... 395/284

5,038,320	8/1991	Heath et al. ....	395/830
5,202,899	4/1993	Walsh ....	375/222
5,202,963	4/1993	Zelley ....	395/883
5,450,530	9/1995	Snyder et al. ....	375/220
5,517,646	5/1996	Piccirillo et al. ....	395/651
5,530,887	6/1996	Harper et al. ....	395/800
5,530,895	6/1996	Enstrom ....	395/829
5,548,759	8/1996	Lipe ....	395/611
5,594,873	1/1997	Garrett ....	395/281

#### OTHER PUBLICATIONS

IBM Technical Disclosure Bulletin, vol. 29, No.7, p. 2988  
Dec. 1986.

*Primary Examiner*—Thomas C. Lee

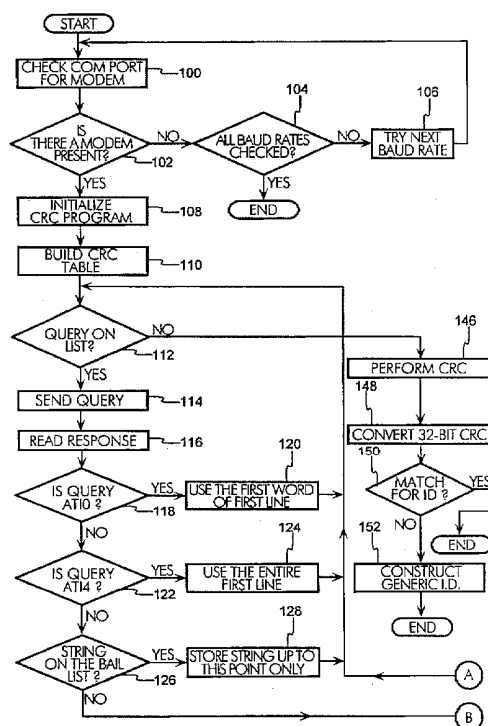
*Assistant Examiner*—Ki S. Kim

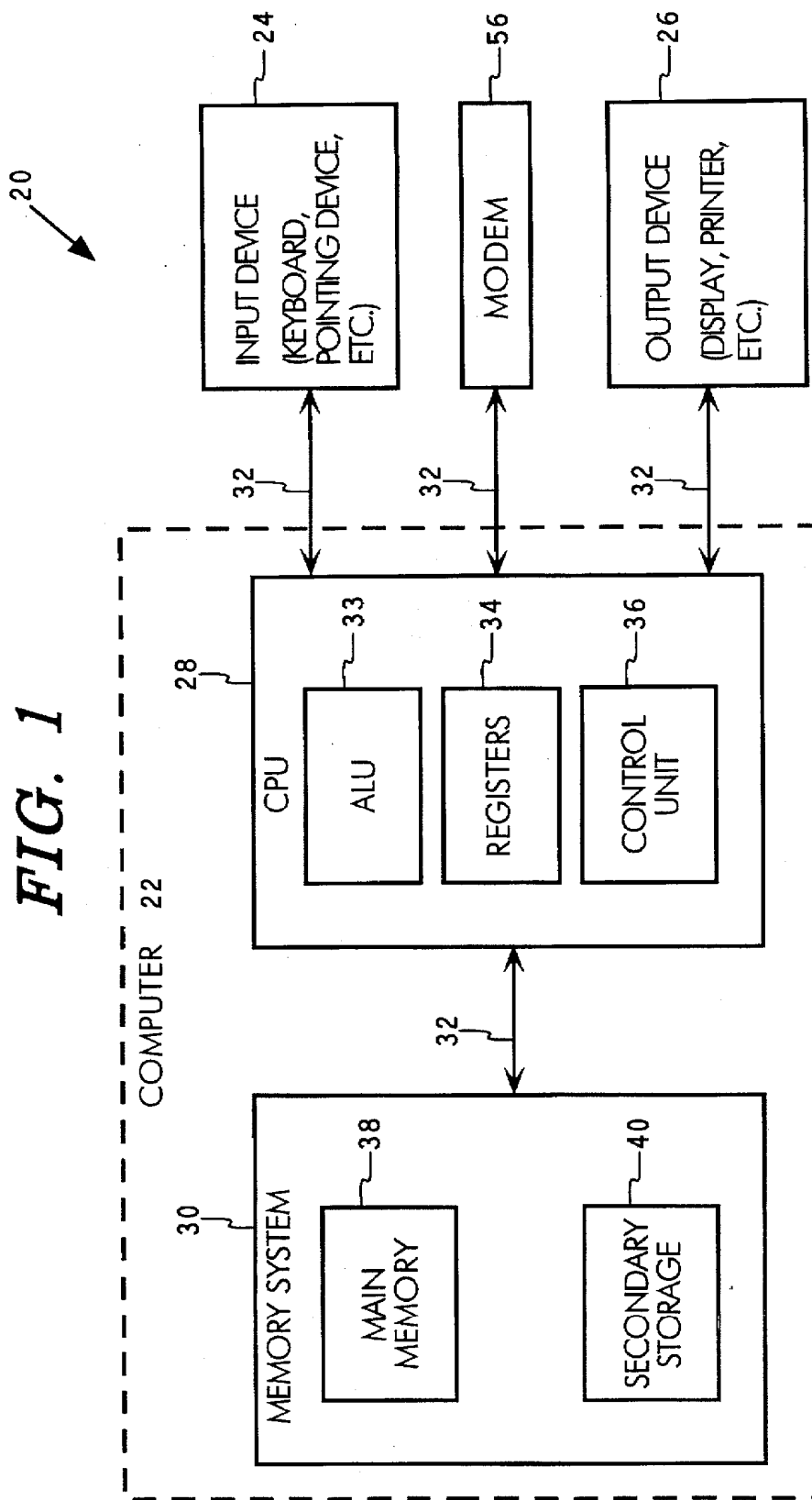
*Attorney, Agent, or Firm*—Klarquist Sparkman Campbell  
Leigh & Winston

#### [57] ABSTRACT

A device independent modem interface employs a call control and data transfer application programming interface for application programs to access a modem in a device independent fashion. A universal modem driver reads device specific information from a registry to issue specific control commands to a modem. The universal modem driver separates command mode and data mode of the modem transparently to the application. The modem interface also includes support for detecting a modem and for loading device specific information into the registry based on the modem identification.

**20 Claims, 5 Drawing Sheets**





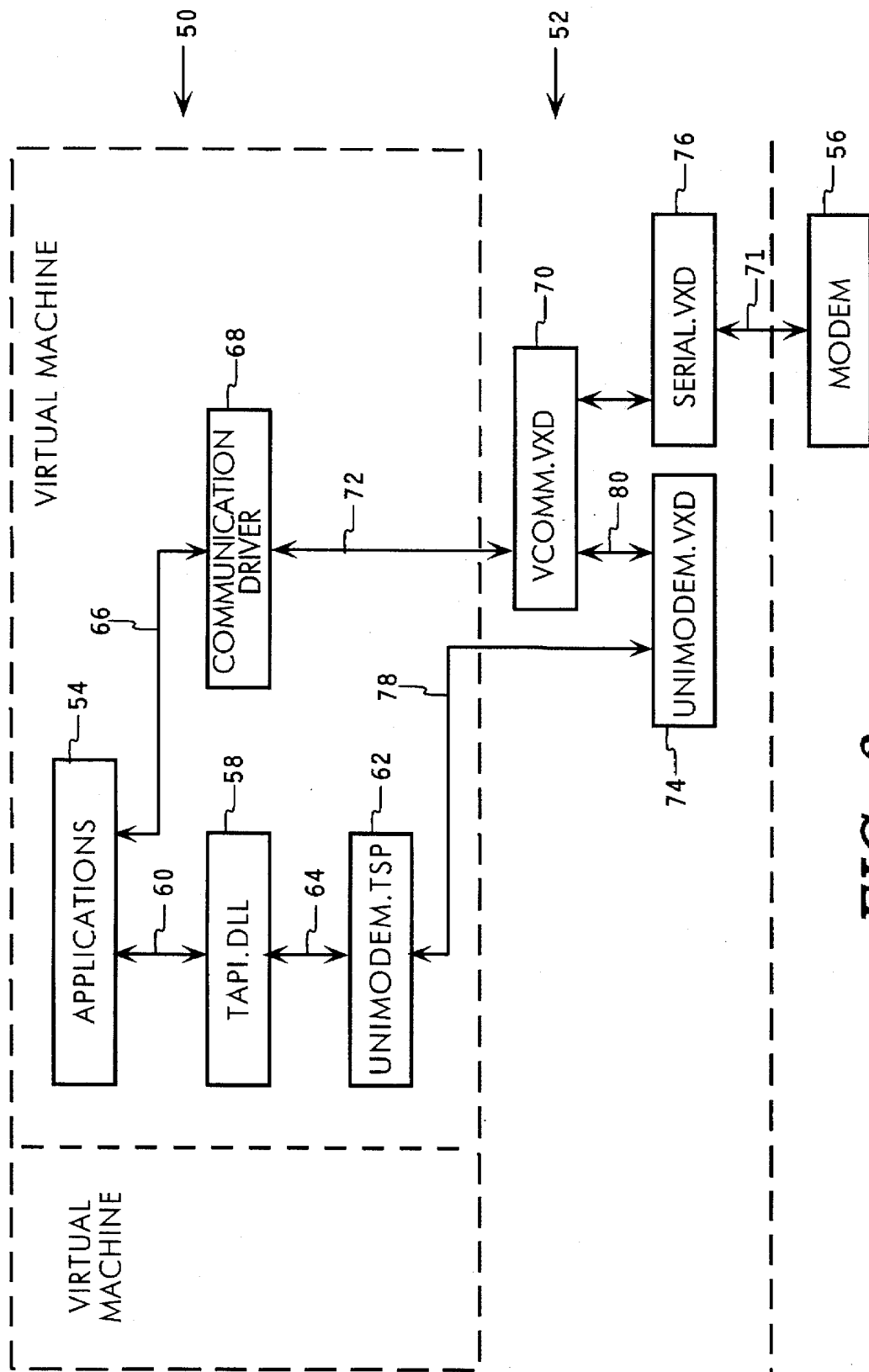


FIG. 2

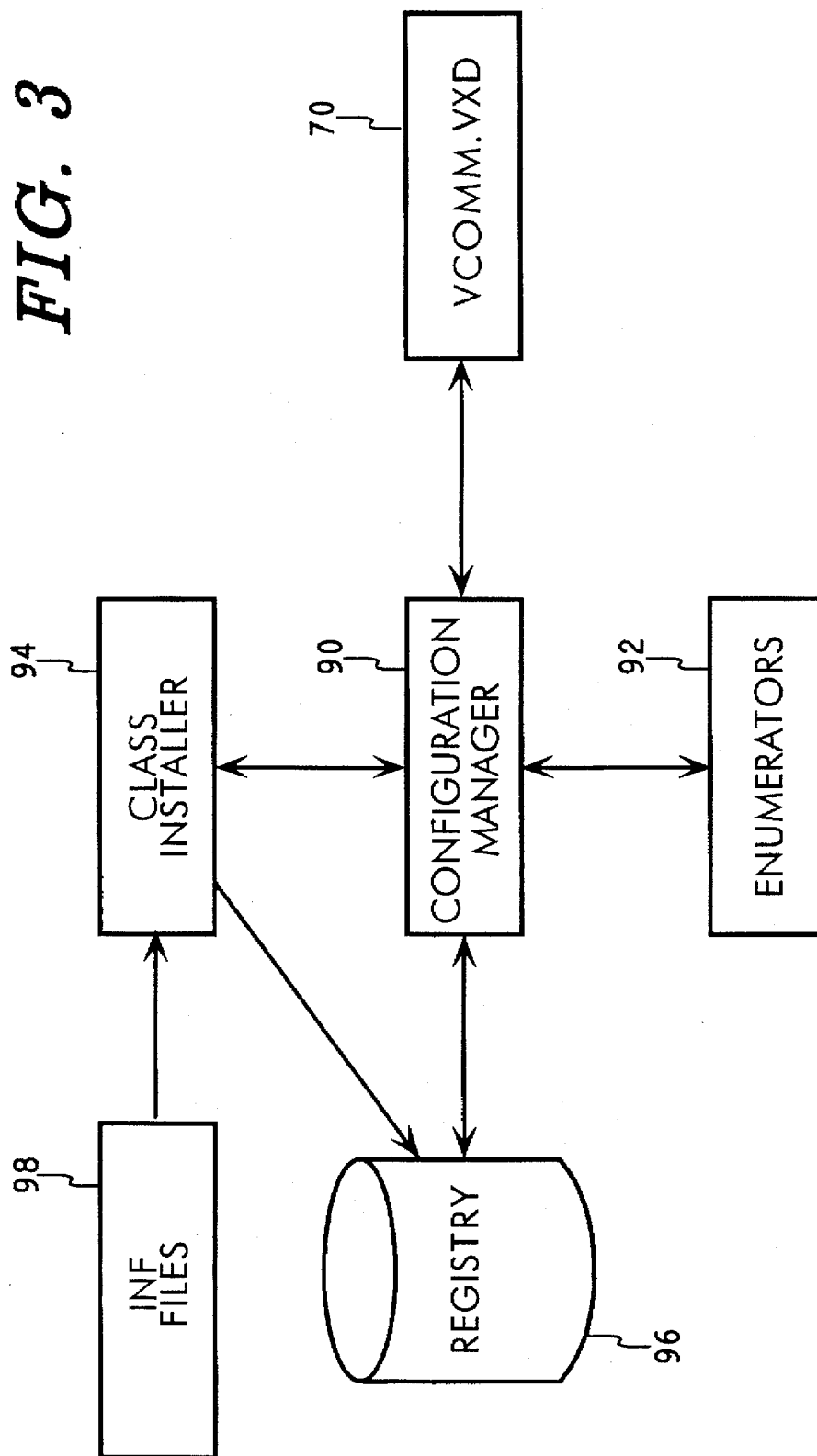
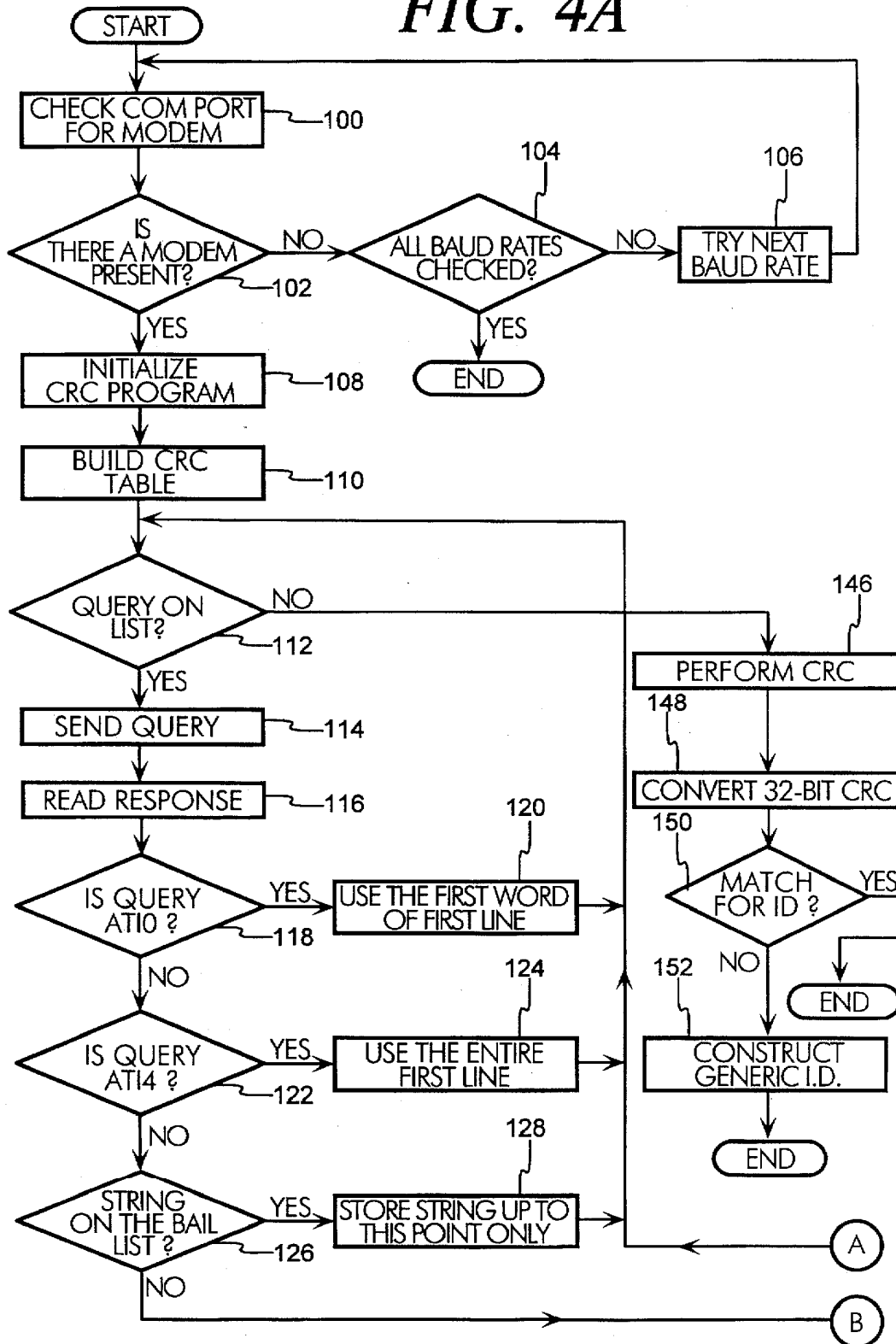
**FIG. 3**

FIG. 4A



# Explore Litigation Insights

Docket Alarm provides insights to develop a more informed litigation strategy and the peace of mind of knowing you're on top of things.

## Real-Time Litigation Alerts



Keep your litigation team up-to-date with **real-time alerts** and advanced team management tools built for the enterprise, all while greatly reducing PACER spend.

Our comprehensive service means we can handle Federal, State, and Administrative courts across the country.

## Advanced Docket Research



With over 230 million records, Docket Alarm's cloud-native docket research platform finds what other services can't. Coverage includes Federal, State, plus PTAB, TTAB, ITC and NLRB decisions, all in one place.

Identify arguments that have been successful in the past with full text, pinpoint searching. Link to case law cited within any court document via Fastcase.

## Analytics At Your Fingertips



Learn what happened the last time a particular judge, opposing counsel or company faced cases similar to yours.

Advanced out-of-the-box PTAB and TTAB analytics are always at your fingertips.

## API

Docket Alarm offers a powerful API (application programming interface) to developers that want to integrate case filings into their apps.

## LAW FIRMS

Build custom dashboards for your attorneys and clients with live data direct from the court.

Automate many repetitive legal tasks like conflict checks, document management, and marketing.

## FINANCIAL INSTITUTIONS

Litigation and bankruptcy checks for companies and debtors.

## E-DISCOVERY AND LEGAL VENDORS

Sync your system to PACER to automate legal marketing.