



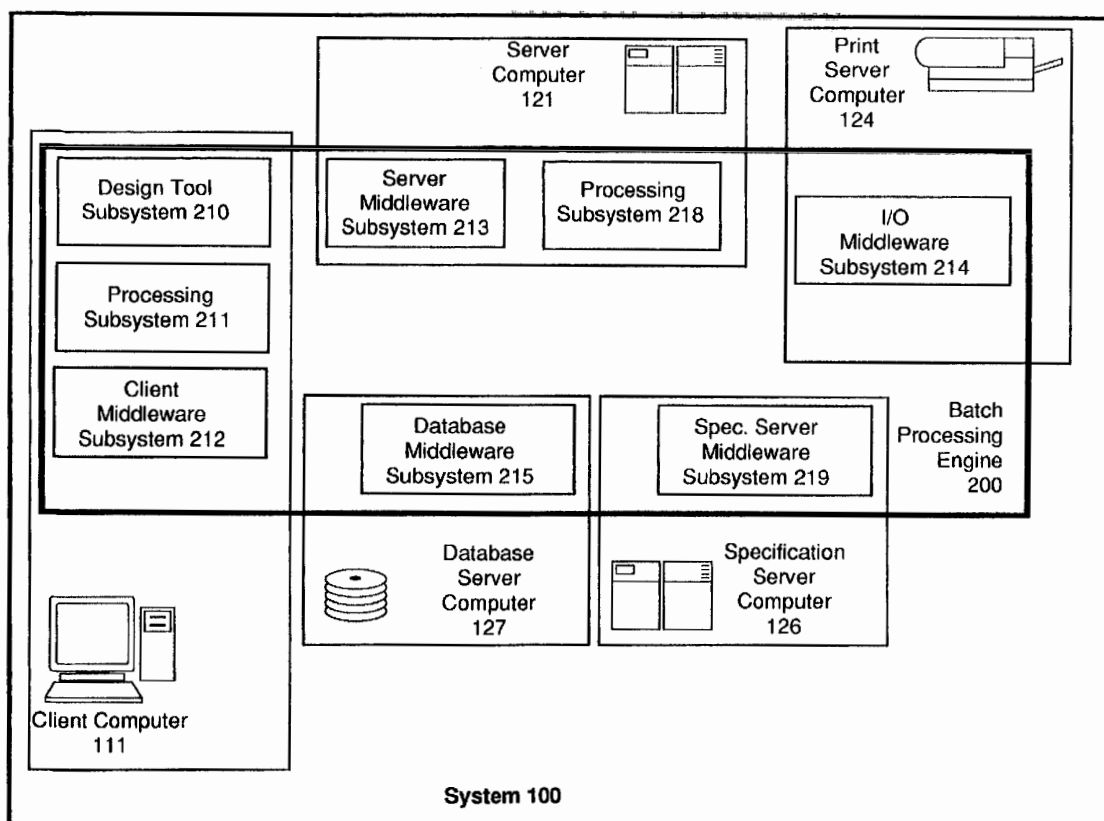
US 20010018708A1

(19) **United States**(12) **Patent Application Publication**  
Shisler et al.(10) **Pub. No.: US 2001/0018708 A1**(43) **Pub. Date: Aug. 30, 2001**(54) **PLATFORM-INDEPENDENT  
PROGRAMMABLE BATCH PROCESSING  
ENGINE****Publication Classification**(51) **Int. Cl.<sup>7</sup>** ..... **G06F 15/16; G06F 15/177**(76) Inventors: **Harry E. Shisler**, Buena Vista, CO  
(US); **Kevin D. Reitz**, Aurora, CO (US)(52) **U.S. Cl.** ..... **709/220; 709/201; 709/219**

Correspondence Address:

**FENWICK & WEST LLP**  
**TWO PALO ALTO SQUARE**  
**PALO ALTO, CA 94306 (US)**(57) **ABSTRACT**(21) Appl. No.: **09/758,565**(22) Filed: **Jan. 11, 2001****Related U.S. Application Data**(63) Continuation of application No. 08/743,201, filed on  
Nov. 5, 1996.

A data processing system includes a multitude of client computers and server computers, of various platform types, interconnected by a network. A batch processing engine permits an application resident on a client computer to specify processing to be performed by one or more of the computers connected to the network, regardless of the platform type of such computers. The batch processing engine is implemented in part by middleware.



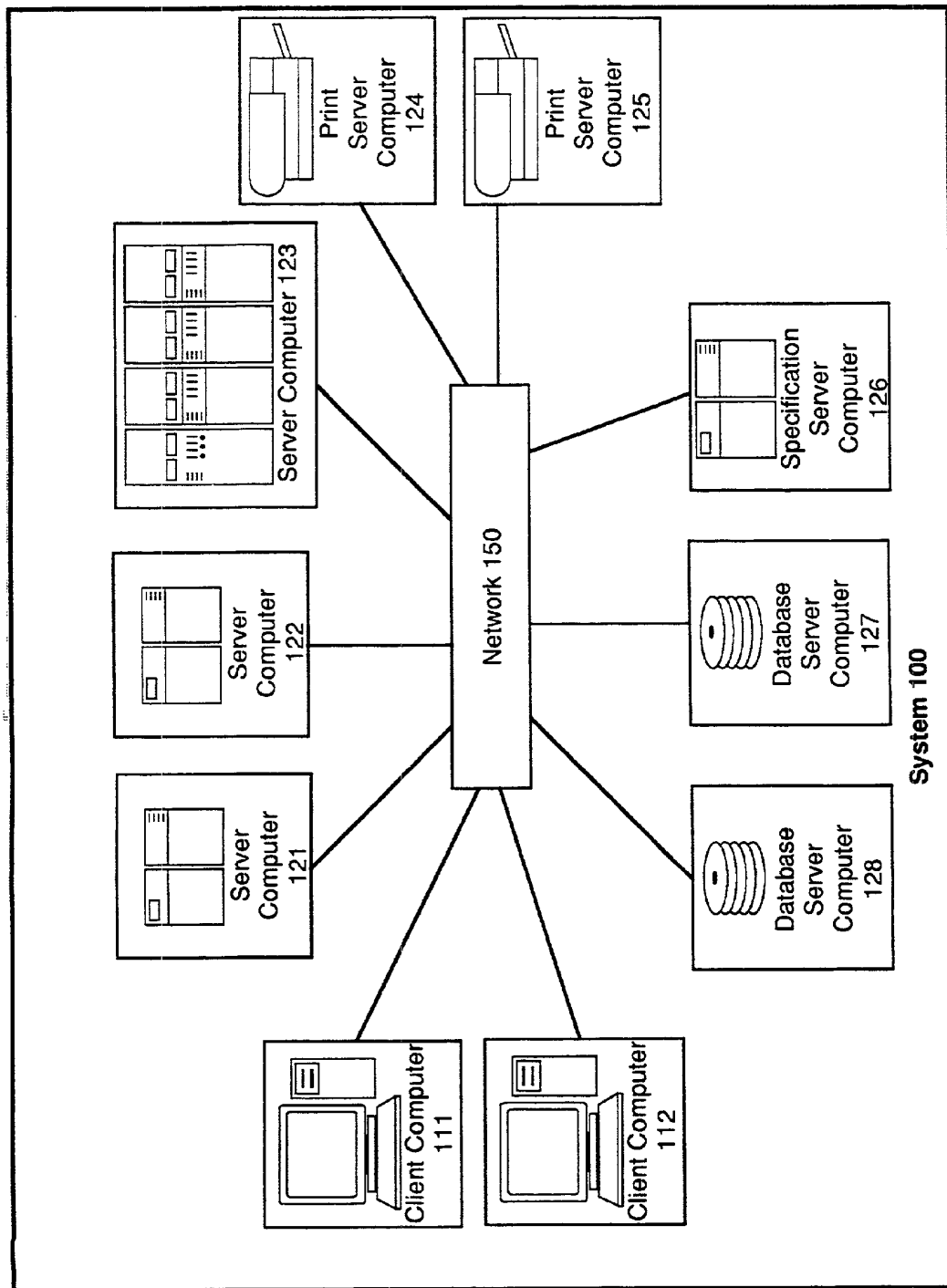


Figure 1

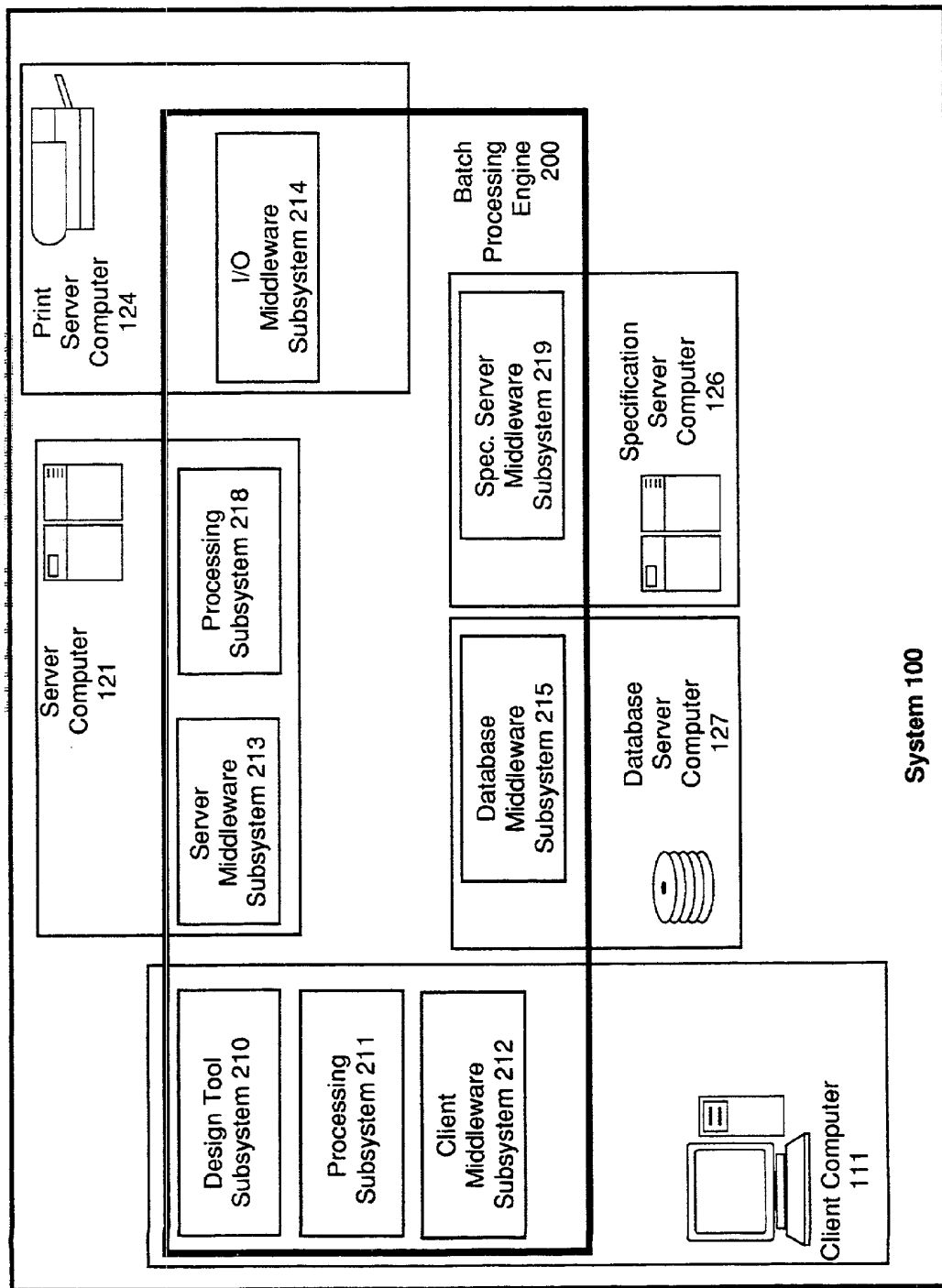
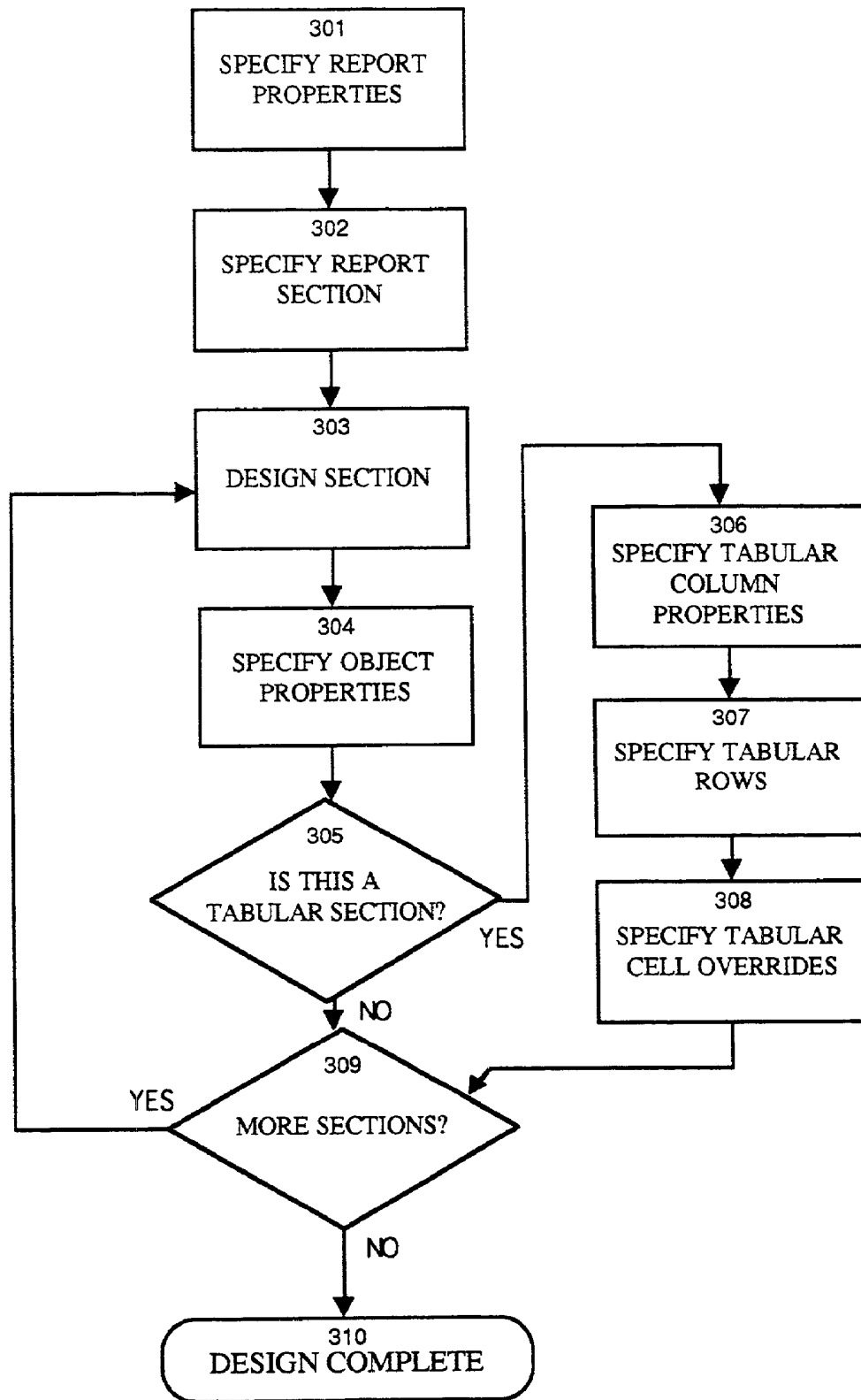


Figure 2



*Figure 3*

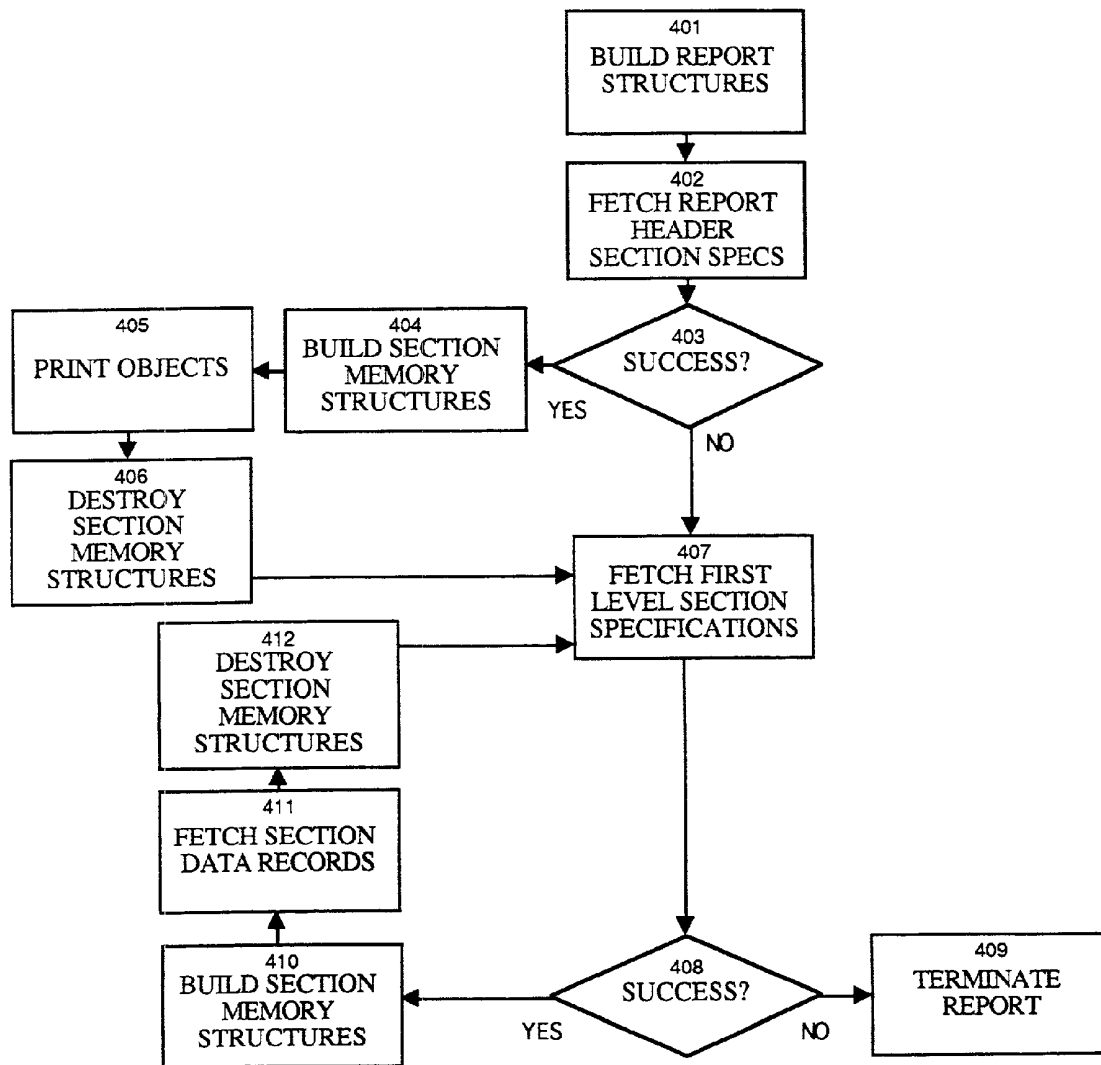


Figure 4

# Explore Litigation Insights

Docket Alarm provides insights to develop a more informed litigation strategy and the peace of mind of knowing you're on top of things.

## Real-Time Litigation Alerts



Keep your litigation team up-to-date with **real-time alerts** and advanced team management tools built for the enterprise, all while greatly reducing PACER spend.

Our comprehensive service means we can handle Federal, State, and Administrative courts across the country.

## Advanced Docket Research



With over 230 million records, Docket Alarm's cloud-native docket research platform finds what other services can't. Coverage includes Federal, State, plus PTAB, TTAB, ITC and NLRB decisions, all in one place.

Identify arguments that have been successful in the past with full text, pinpoint searching. Link to case law cited within any court document via Fastcase.

## Analytics At Your Fingertips



Learn what happened the last time a particular judge, opposing counsel or company faced cases similar to yours.

Advanced out-of-the-box PTAB and TTAB analytics are always at your fingertips.

## API

Docket Alarm offers a powerful API (application programming interface) to developers that want to integrate case filings into their apps.

## LAW FIRMS

Build custom dashboards for your attorneys and clients with live data direct from the court.

Automate many repetitive legal tasks like conflict checks, document management, and marketing.

## FINANCIAL INSTITUTIONS

Litigation and bankruptcy checks for companies and debtors.

## E-DISCOVERY AND LEGAL VENDORS

Sync your system to PACER to automate legal marketing.