

US005761669A

**United States Patent** [19][11] **Patent Number:** **5,761,669****Montague et al.**[45] **Date of Patent:** **Jun. 2, 1998**[54] **CONTROLLING ACCESS TO OBJECTS ON MULTIPLE OPERATING SYSTEMS**[75] Inventors: **David S. Montague**, Bellevue;  
**Pradyumna K. Misra**, Issaquah;  
**Michael M. Swift**, Bellevue; **Robert P. Reichel**, Redmond, all of Wash.

5,297,283	3/1994	Kelly, Jr. et al.	395/650
5,335,346	8/1994	Fabbio	395/600
5,446,903	8/1995	Abraham et al.	395/728
5,469,576	11/1995	Dauerer et al.	395/186
5,495,521	2/1996	Rangachar	379/95

**OTHER PUBLICATIONS**

Novel Netware, Version 3.11 pp. 192-261, 1991.

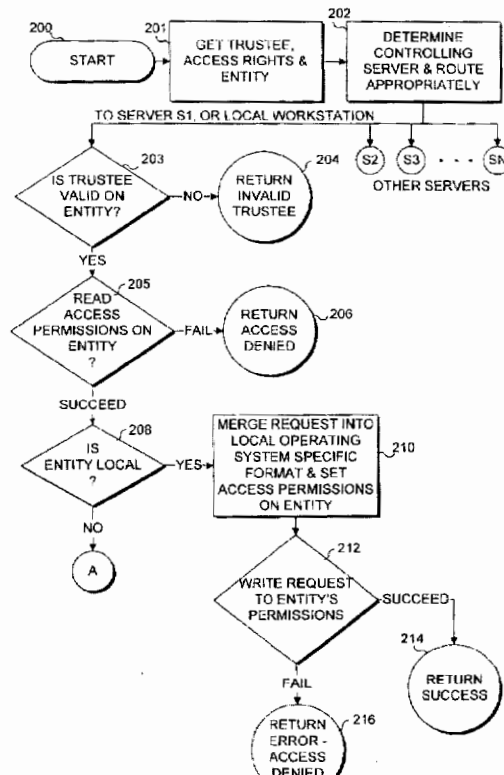
*Primary Examiner*—Paul R. Lintz*Assistant Examiner*—Frantz Coby*Attorney, Agent, or Firm*—Ronald M. Anderson[73] Assignee: **Microsoft Corporation**, Redmond, Wash.[21] Appl. No.: **534,197**[22] Filed: **Sep. 26, 1995**[57] **ABSTRACT****Related U.S. Application Data**

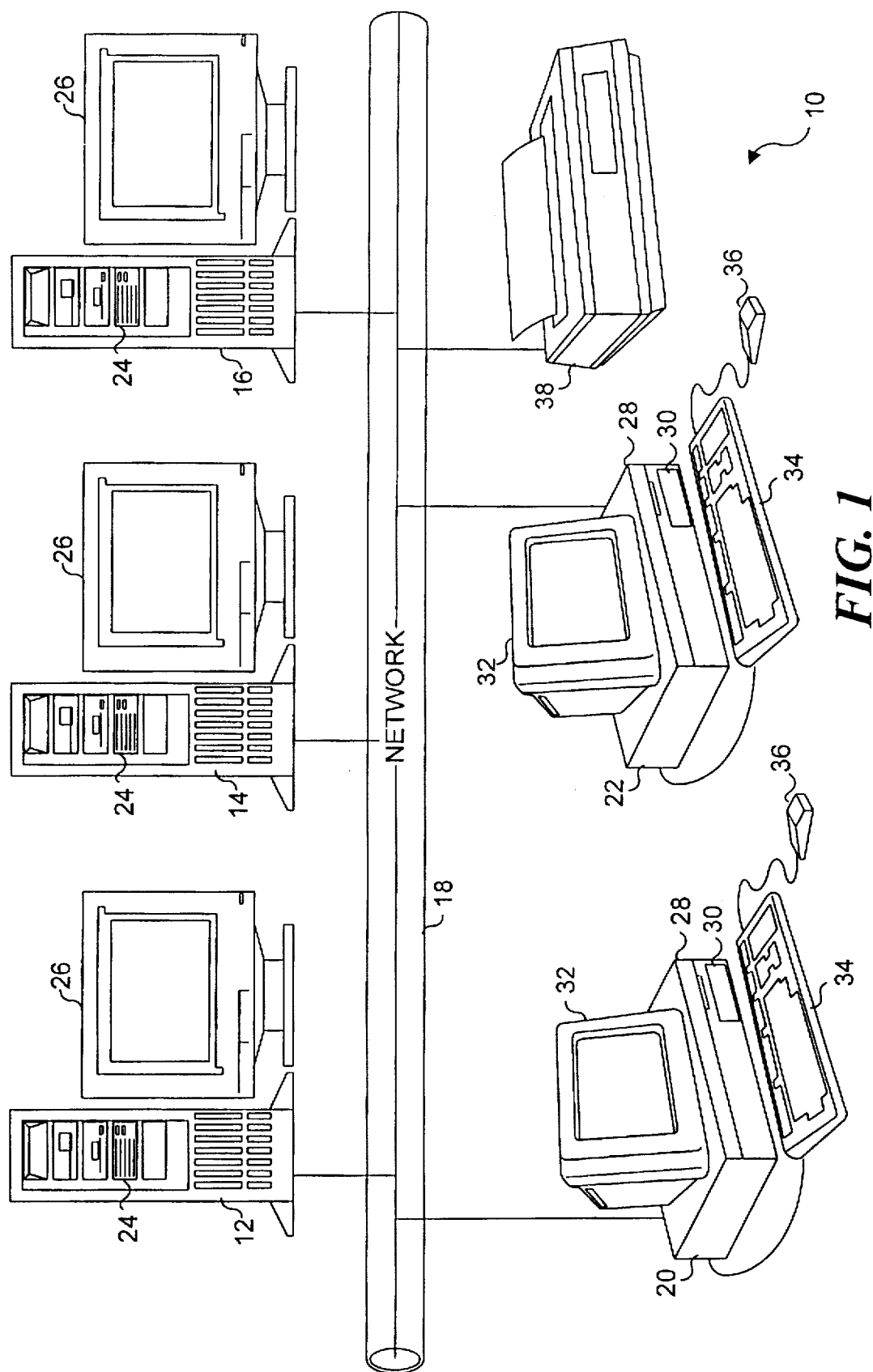
[63] Continuation-in-part of Ser. No. 465,990, Jun. 6, 1995, Pat. No. 5,675,782.

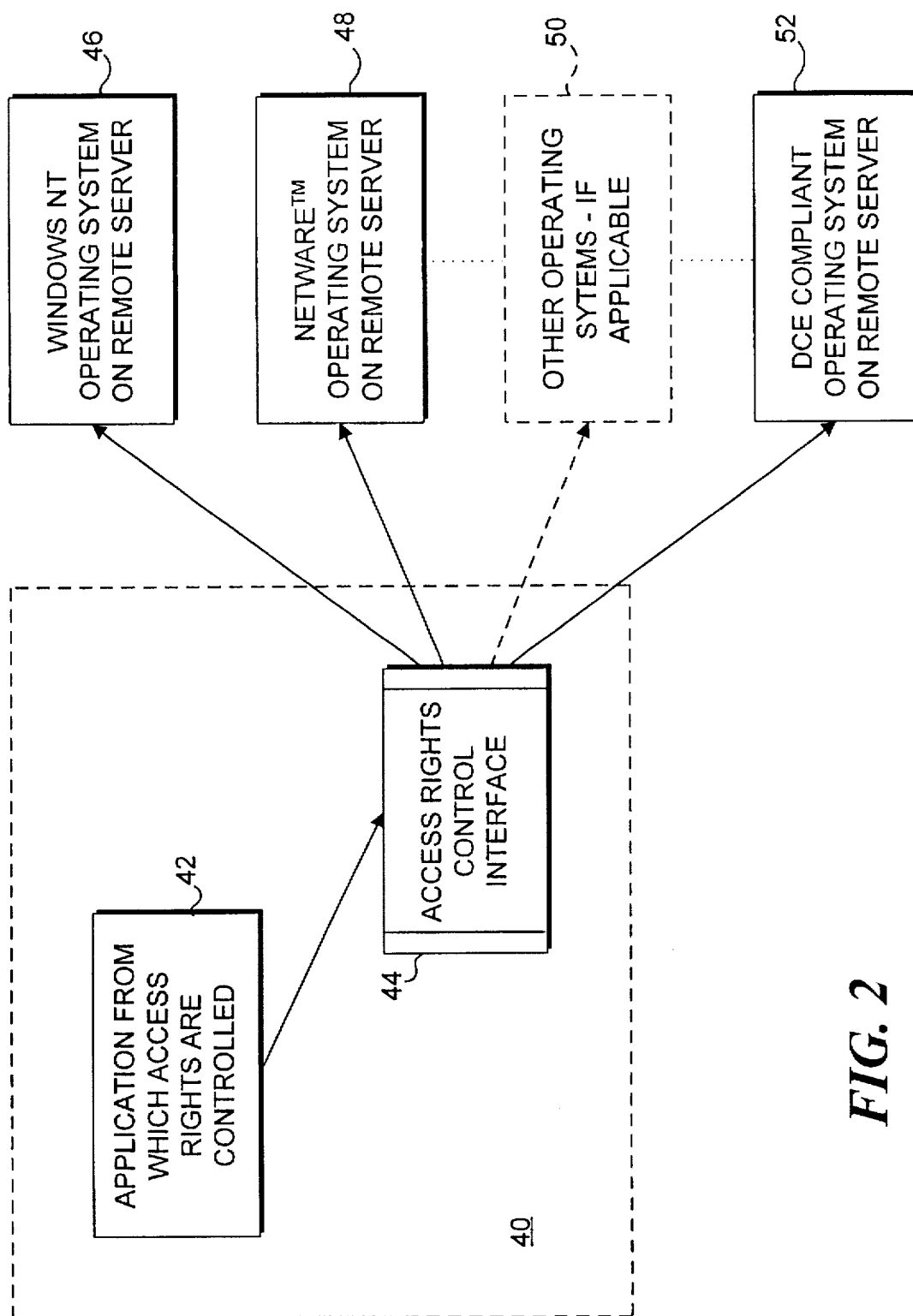
[51] Int. Cl.<sup>6</sup> ..... **G06F 17/30**[52] U.S. Cl. .... **707/103; 707/104**[58] Field of Search ..... 395/650, 614,  
395/700, 728, 800, 186; 379/95; 707/103,  
104[56] **References Cited****U.S. PATENT DOCUMENTS**

5,128,697	7/1992	Chung	395/650
5,129,083	7/1992	Cutler et al.	395/600
5,136,712	8/1992	Perazzoli, Jr. et al.	395/700
5,263,157	11/1993	Janis	395/600
5,276,901	1/1994	Howell et al.	395/800

A method and system for controlling access to entities on a network on which a plurality of servers are installed that use different operating systems. A request is entered by a user at a workstation on the network to set access permissions to an entity on the network in regard to a trustee. In response to the request, various application programming interfaces (APIs) are called to translate the generic request to set permissions on the entity into a format appropriate for the operating system that controls the entity. Assuming that the user has the appropriate rights to set access permissions to the entity as requested, and assuming that the trustee identified by the user is among those who can have rights set to the entity, the request made by the user is granted. Entities include both "containers" and "objects." Entities are either software, such as directories (containers) and files (objects), or hardware, such as printers (objects).

**26 Claims, 12 Drawing Sheets**



**FIG. 2**

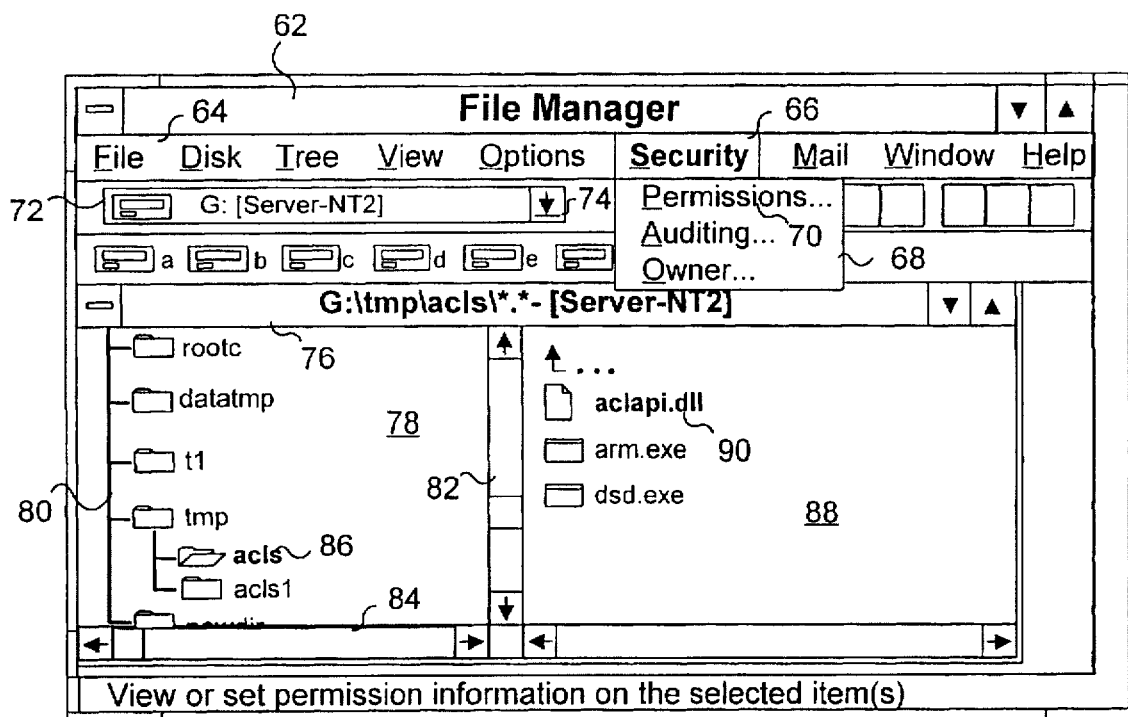


FIG. 3

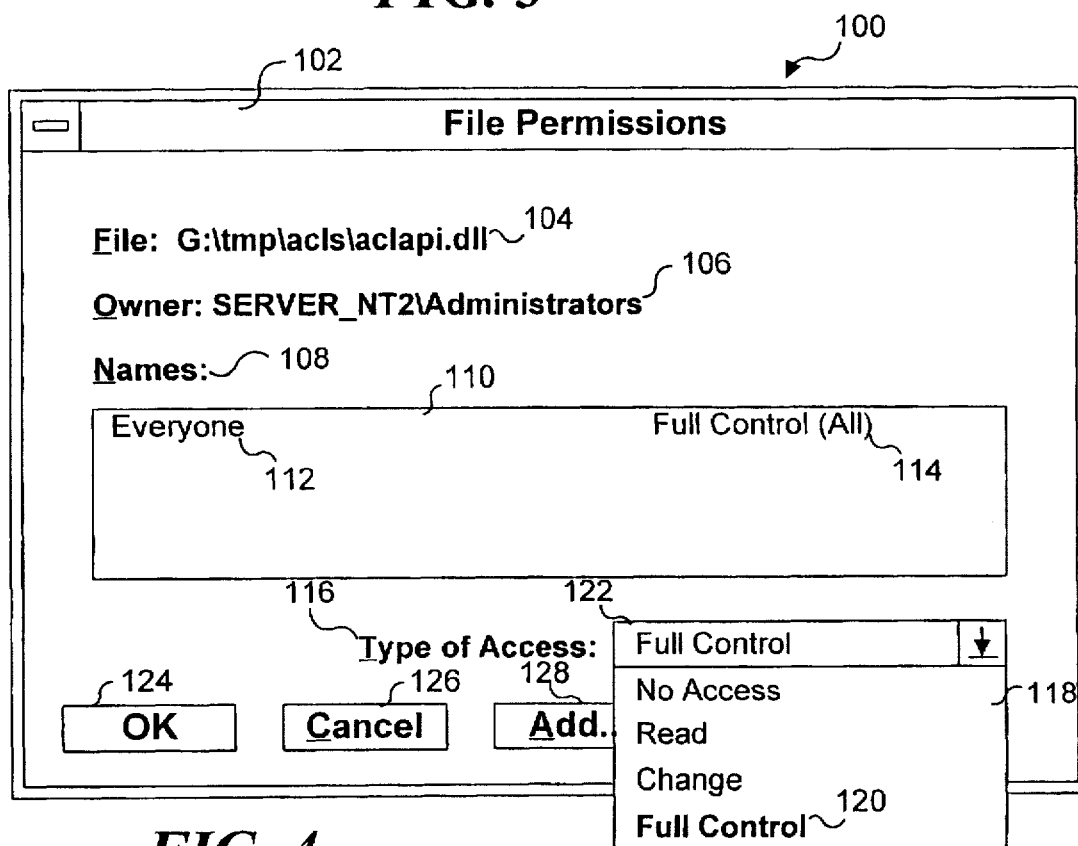


FIG. 4

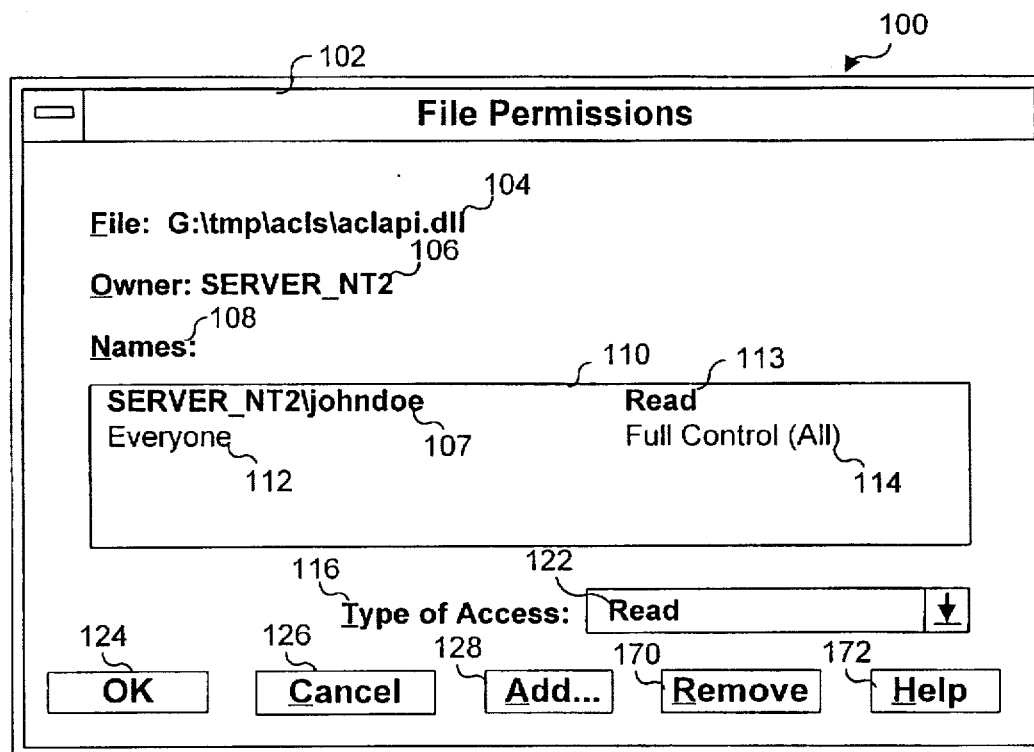
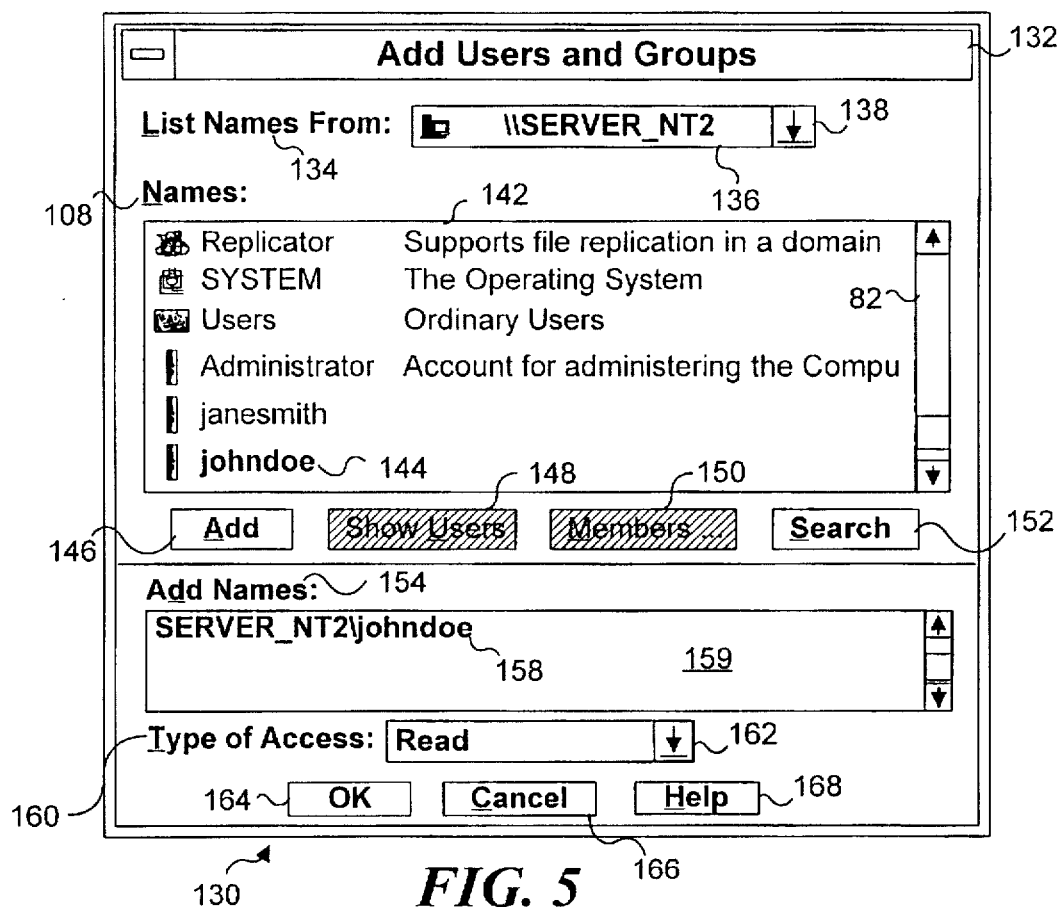


FIG. 6

# Explore Litigation Insights

Docket Alarm provides insights to develop a more informed litigation strategy and the peace of mind of knowing you're on top of things.

## Real-Time Litigation Alerts



Keep your litigation team up-to-date with **real-time alerts** and advanced team management tools built for the enterprise, all while greatly reducing PACER spend.

Our comprehensive service means we can handle Federal, State, and Administrative courts across the country.

## Advanced Docket Research



With over 230 million records, Docket Alarm's cloud-native docket research platform finds what other services can't. Coverage includes Federal, State, plus PTAB, TTAB, ITC and NLRB decisions, all in one place.

Identify arguments that have been successful in the past with full text, pinpoint searching. Link to case law cited within any court document via Fastcase.

## Analytics At Your Fingertips



Learn what happened the last time a particular judge, opposing counsel or company faced cases similar to yours.

Advanced out-of-the-box PTAB and TTAB analytics are always at your fingertips.

## API

Docket Alarm offers a powerful API (application programming interface) to developers that want to integrate case filings into their apps.

## LAW FIRMS

Build custom dashboards for your attorneys and clients with live data direct from the court.

Automate many repetitive legal tasks like conflict checks, document management, and marketing.

## FINANCIAL INSTITUTIONS

Litigation and bankruptcy checks for companies and debtors.

## E-DISCOVERY AND LEGAL VENDORS

Sync your system to PACER to automate legal marketing.