



US005835765A

**United States Patent** [19]  
**Matsumoto**

[11] **Patent Number:** **5,835,765**  
[45] **Date of Patent:** **\*Nov. 10, 1998**

[54] **COMPUTER OPERATION MANAGEMENT SYSTEM FOR A COMPUTER OPERATING SYSTEM CAPABLE OF SIMULTANEOUSLY EXECUTING PLURAL APPLICATION PROGRAMS**

[75] Inventor: **Hajime Matsumoto**, Itami, Japan

[73] Assignee: **Mitsubishi Denki Kabushiki Kaisha**, Tokyo, Japan

[\*] Notice: This patent issued on a continued prosecution application filed under 37 CFR 1.53(d), and is subject to the twenty year patent term provisions of 35 U.S.C. 154(a)(2).

[21] Appl. No.: **539,007**

[22] Filed: **Oct. 4, 1995**

[30] **Foreign Application Priority Data**

May 31, 1995 [JP] Japan ..... 7-133920

[51] Int. Cl.<sup>6</sup> ..... **G06F 9/46**

[52] U.S. Cl. .... **395/672; 395/674; 395/677**

[58] Field of Search ..... 395/650, 672, 395/674, 677; 364/281.7, 281.8, 281.4, 281, 281.6, 284.3, 285.3, 286.4, 265

[56] **References Cited**

**U.S. PATENT DOCUMENTS**

4,318,173 3/1982 Freedman et al. .... 364/200  
4,493,020 1/1985 Kim et al. .... 364/200  
4,845,644 7/1989 Anthias et al. .... 364/521

5,210,872 5/1993 Ferguson et al. .... 395/650  
5,421,011 5/1995 Camillone et al. .... 395/650  
5,437,032 7/1995 Wolf et al. .... 395/650  
5,440,726 8/1995 Fuchs et al. .... 395/82.18  
5,442,791 8/1995 Wrabetz et al. .... 395/650  
5,465,354 11/1995 Hiroswawa et al. .... 395/650  
5,485,626 1/1996 Lawlor et al. .... 395/650  
5,495,606 2/1996 Borden et al. .... 395/600

**OTHER PUBLICATIONS**

Lawrence J. Kenah et al., "VAX.VMS Internals and Data Structures", Digital Press, 1984, pp. 3-12, 183-188, 443-517 and 704-704.

Gendreau et al, Cooperative Self Scheduling In Message Passing Parallel Systems, IEEE Conf. Proceed. 1989, pp. 496-499.

Gendreau, Process Management Issues In Message-Based Multiprocessors, IEEE Conf. Proceed. 1988, pp. 103-107.

Stumm, The Design and Implementation of a Decentralized Scheduling Facility For A Workstation Cluster, Comp. Workstations Conf. 1988 pp. 12-22.

*Primary Examiner*—Lucien U. Toplu

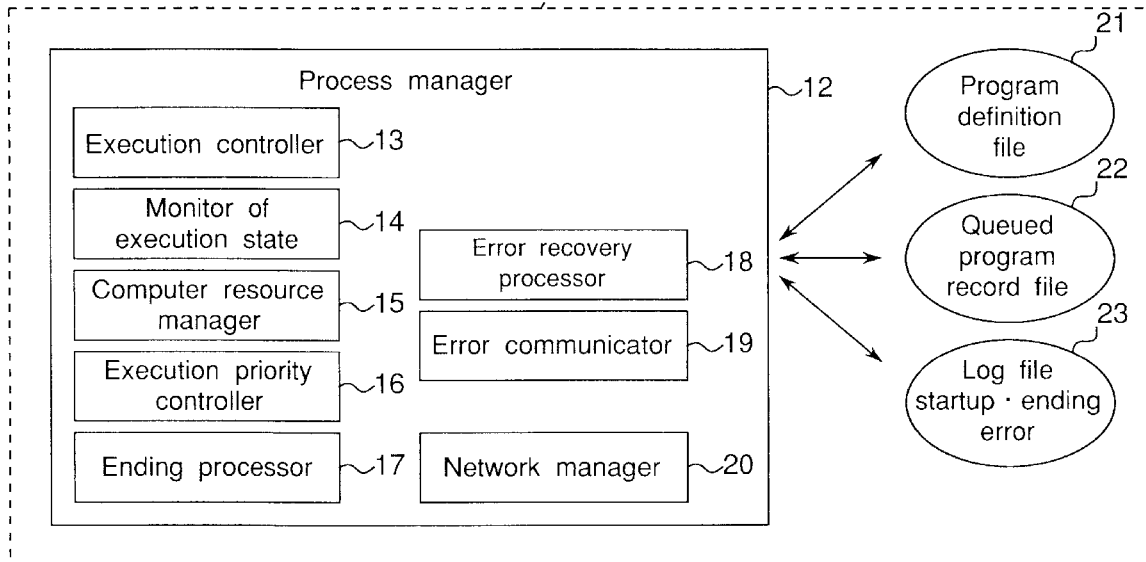
*Attorney, Agent, or Firm*—McDermott, Will & Emery

[57] **ABSTRACT**

A computer operation management system comprises a computer having a central processing unit, a main memory and, an auxiliary memory, an operating system for operating the computer so as for the computer to execute plural application, programs simultaneously and a process manager for monitoring an execution status of plural application programs to control the number of application programs simultaneously executed and their execution priorities.

**11 Claims, 14 Drawing Sheets**

11 Computer operation management system



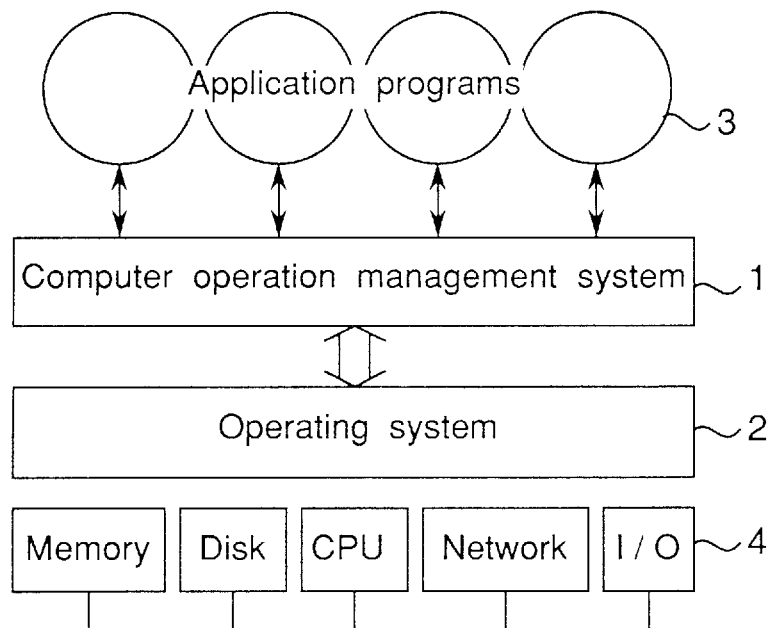
*Fig. 1*

Fig.2

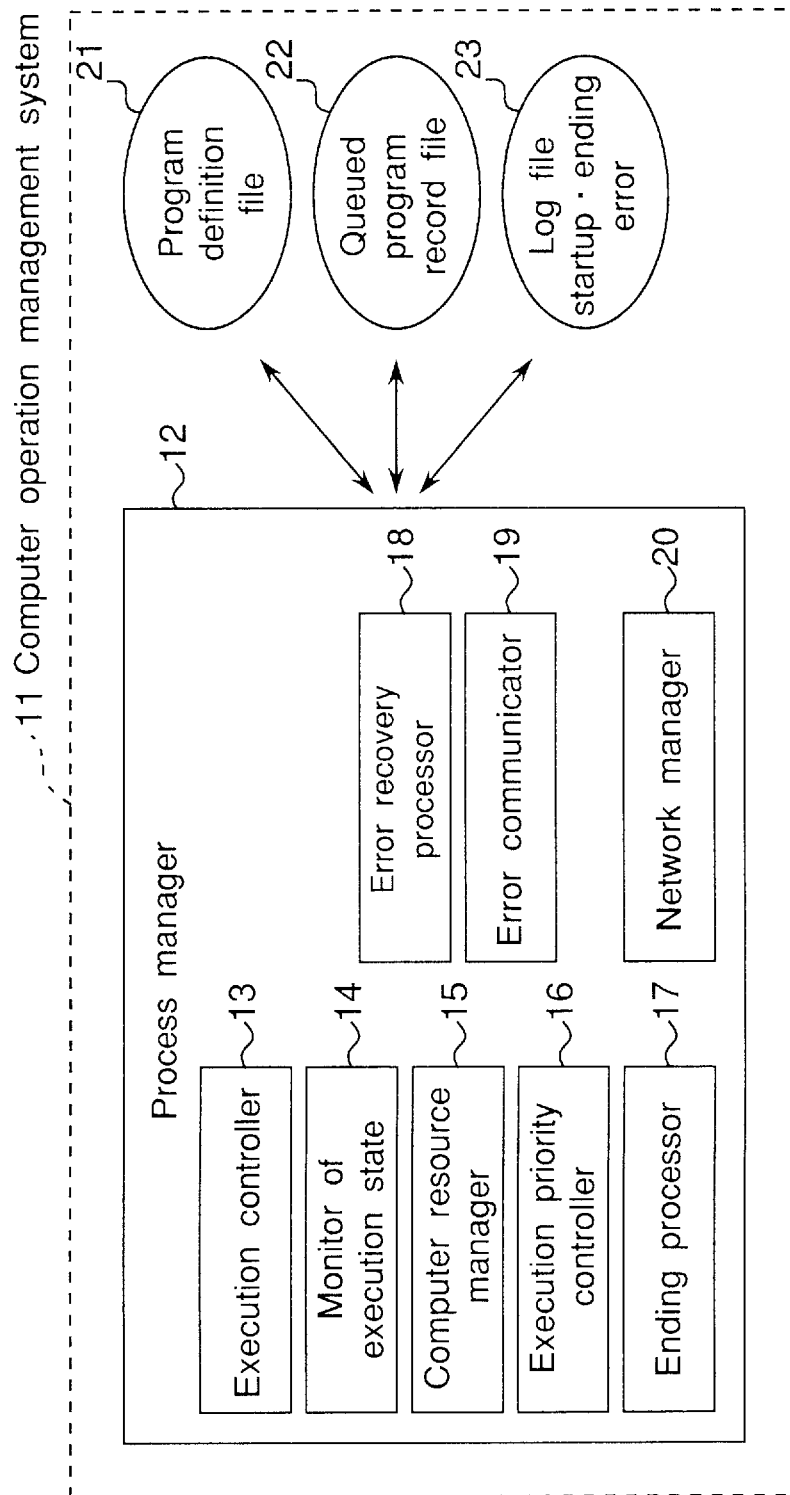
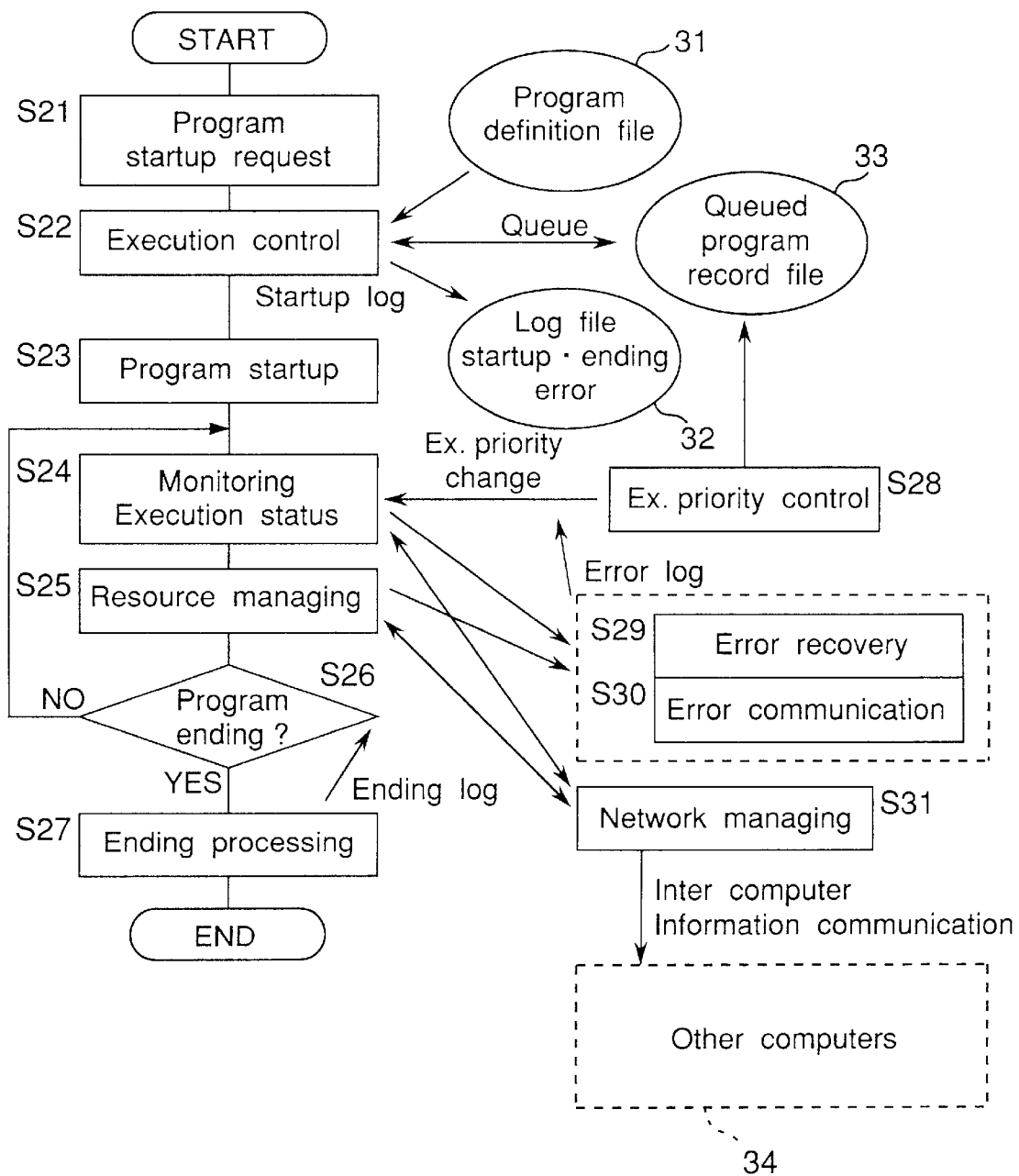
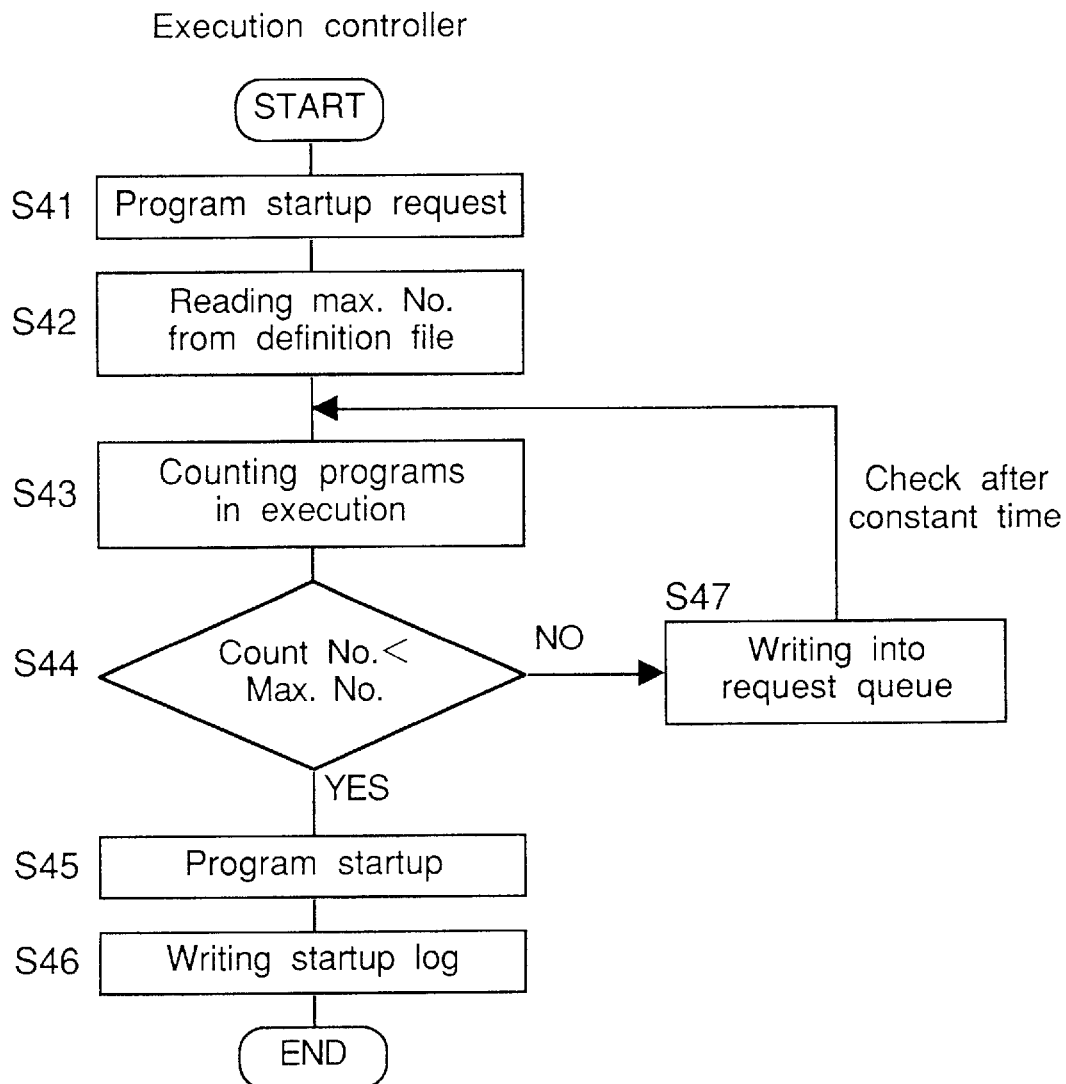


Fig.3

Computer operation management system



*Fig.4*

# Explore Litigation Insights

Docket Alarm provides insights to develop a more informed litigation strategy and the peace of mind of knowing you're on top of things.

## Real-Time Litigation Alerts



Keep your litigation team up-to-date with **real-time alerts** and advanced team management tools built for the enterprise, all while greatly reducing PACER spend.

Our comprehensive service means we can handle Federal, State, and Administrative courts across the country.

## Advanced Docket Research



With over 230 million records, Docket Alarm's cloud-native docket research platform finds what other services can't. Coverage includes Federal, State, plus PTAB, TTAB, ITC and NLRB decisions, all in one place.

Identify arguments that have been successful in the past with full text, pinpoint searching. Link to case law cited within any court document via Fastcase.

## Analytics At Your Fingertips



Learn what happened the last time a particular judge, opposing counsel or company faced cases similar to yours.

Advanced out-of-the-box PTAB and TTAB analytics are always at your fingertips.

## API

Docket Alarm offers a powerful API (application programming interface) to developers that want to integrate case filings into their apps.

## LAW FIRMS

Build custom dashboards for your attorneys and clients with live data direct from the court.

Automate many repetitive legal tasks like conflict checks, document management, and marketing.

## FINANCIAL INSTITUTIONS

Litigation and bankruptcy checks for companies and debtors.

## E-DISCOVERY AND LEGAL VENDORS

Sync your system to PACER to automate legal marketing.