



US006044465A

United States Patent [19]**Dutcher et al.**[11] **Patent Number:** **6,044,465**[45] **Date of Patent:** **Mar. 28, 2000**

[54] **USER PROFILE STORAGE ON AND RETRIEVAL FROM A NON-NATIVE SERVER DOMAIN FOR USE IN A CLIENT RUNNING A NATIVE OPERATING SYSTEM**

5,555,376 9/1996 Theimer et al. 395/200.09
 5,623,666 4/1997 Pike et al. 395/616
 5,790,790 8/1998 Smith et al. 395/200.36
 5,812,843 9/1998 Yamazaki et al. 395/670

OTHER PUBLICATIONS

Jacobs and Ibanez, "Remote User Profile Management Administration in a Computer Network", IBM Database, Dec. 1993.
 Tate, KA, "Aggregate User Profile," Research Disclosure No. 347, Mar. 1993.

Primary Examiner—Ly V. Hua

Attorney, Agent, or Firm—David H. Judson; Jeffrey S. LaBaw

[75] **Inventors:** **David Paul Dutcher; Scott Alan Lenharth**, both of Austin; **James Michael Rolette, Jr.**, Round Rock; **Stanley Alan Smith; Courtney Joseph Spooner**, both of Austin, all of Tex.

[73] **Assignee:** **International Business Machines Corporation**, Armonk, N.Y.

[21] **Appl. No.:** **08/888,735**

[22] **Filed:** **Jul. 7, 1997**

[51] **Int. Cl.⁷** **G06F 13/00**

[52] **U.S. Cl.** **713/200; 713/201; 713/202**

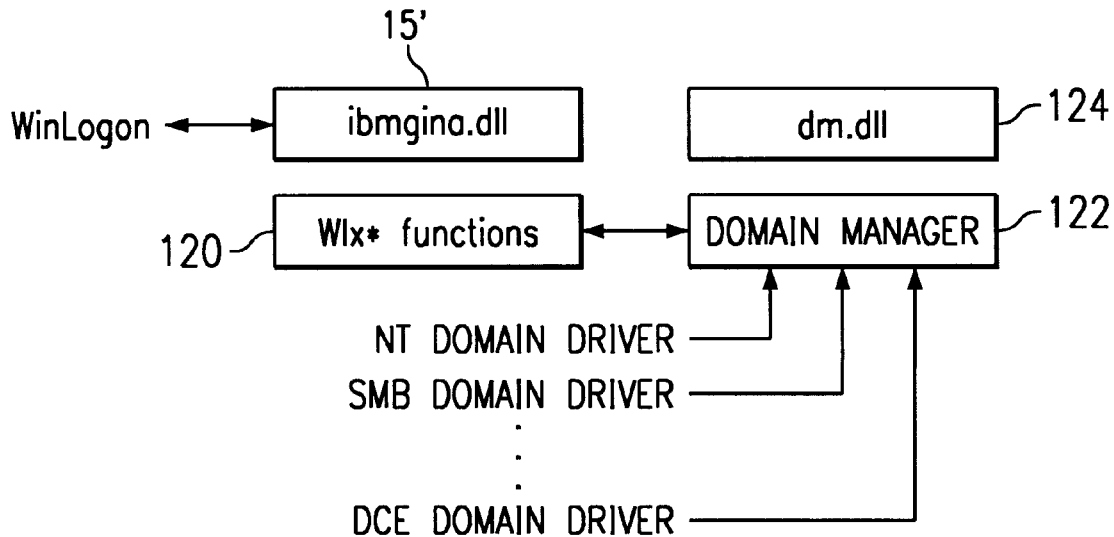
[58] **Field of Search** 395/186, 187.01, 395/188.01, 200.59, 200.57; 380/25; 707/10, 9; 713/200, 201, 202

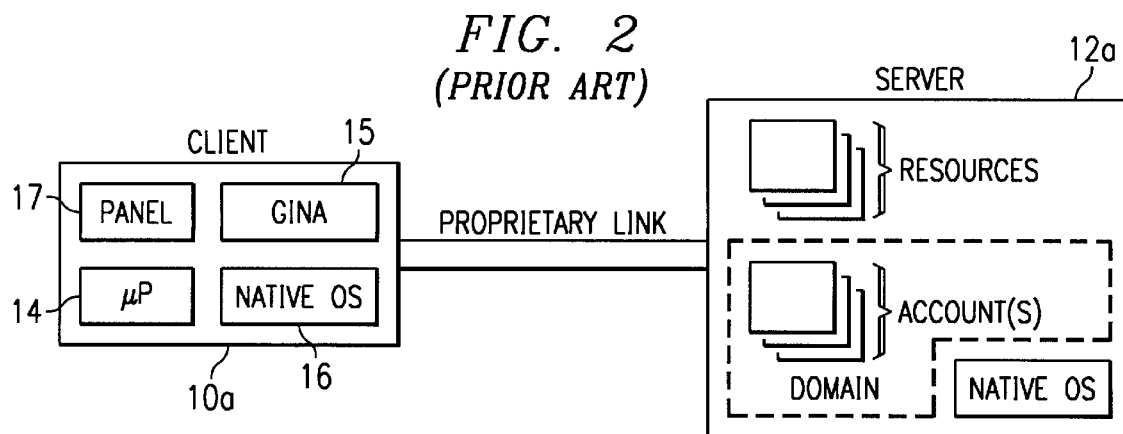
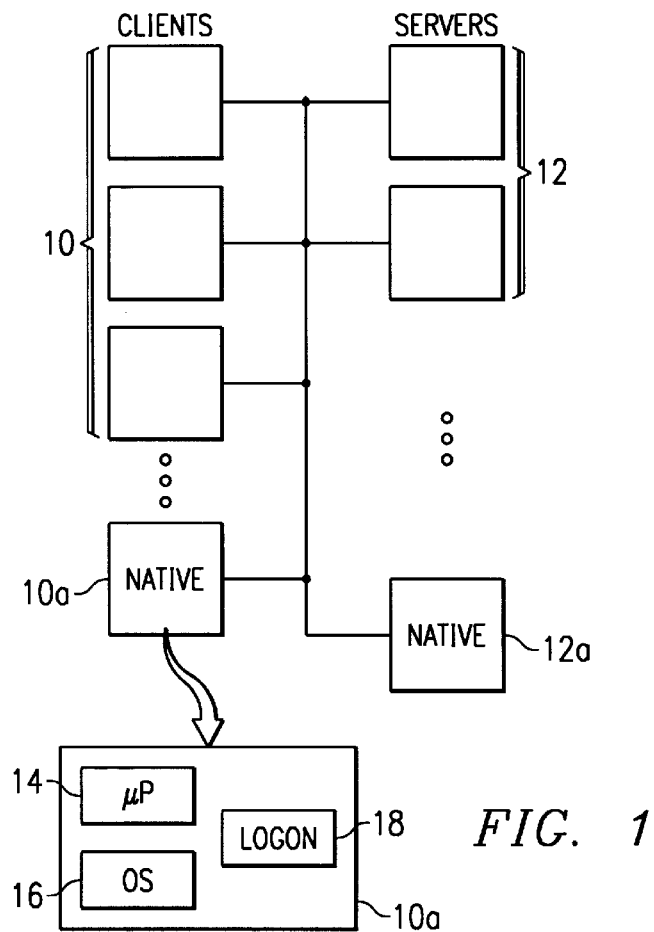
[56] **References Cited****U.S. PATENT DOCUMENTS**

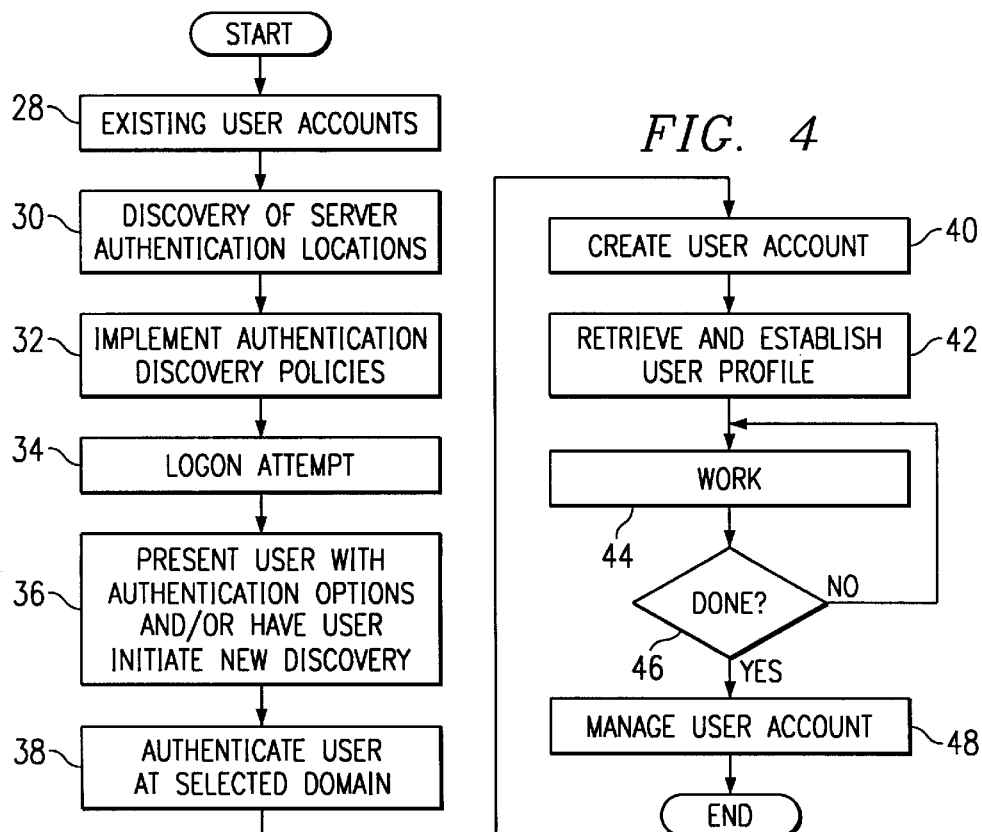
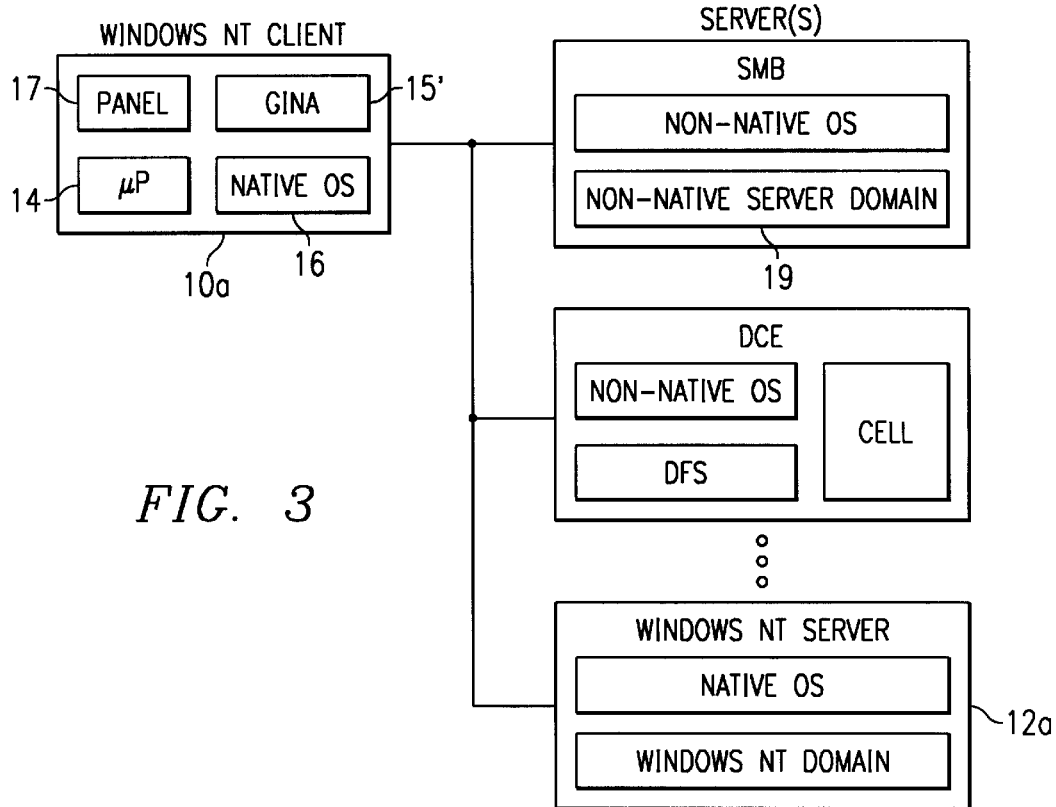
5,263,165 11/1993 Janis 711/163
 5,329,619 7/1994 Pagé et al. 395/200.33
 5,369,778 11/1994 San Soucie et al. 707/103
 5,475,819 12/1995 Miller et al. 395/200.33
 5,535,375 7/1996 Eshel et al. 395/500

[57] **ABSTRACT**

A user is authenticated at a client machine running a native operating system. Authentication may be effected from one or more non-native server domains including, without limitation, a Server Message Block (SMB) server domain, a DCE Cell, or some other non-Windows NT server domain. Following successful authentication, a user account is dynamically established or updated at the client by retrieving from the server user information and a set of "group" privileges associated with the authenticated user. A "user profile" is retrieved from the non-native server domain and used to establish at the client a user desktop and any preferences associated with the user.

20 Claims, 7 Drawing Sheets





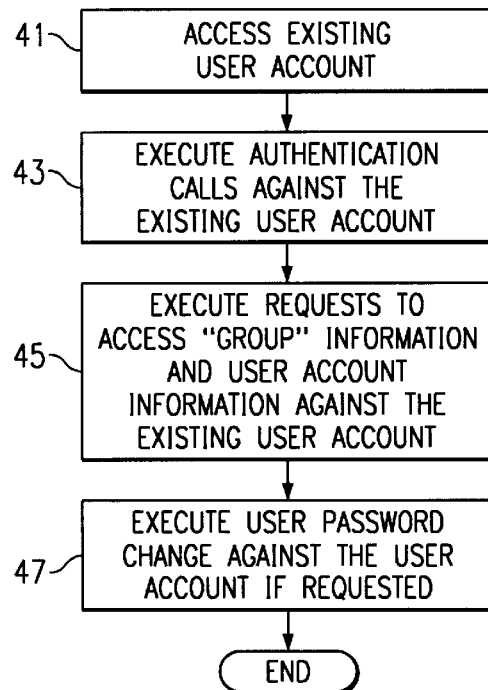


FIG. 5

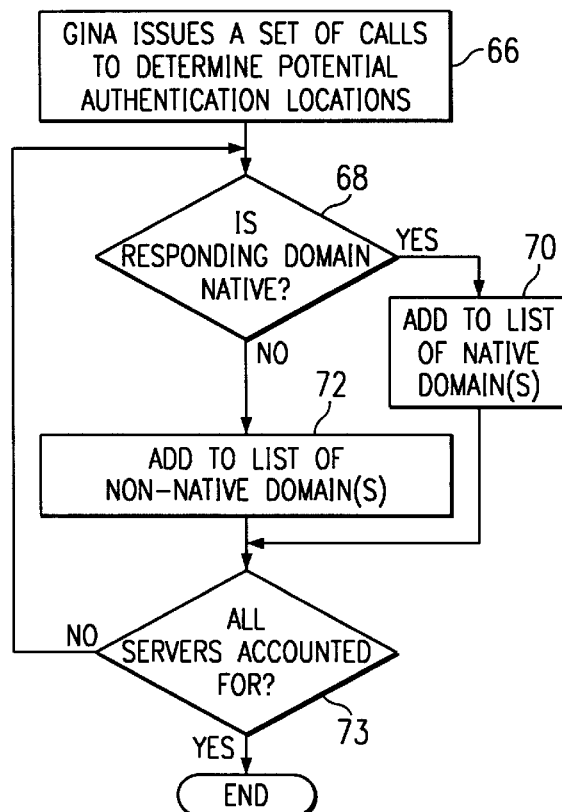


FIG. 6

FIG. 7

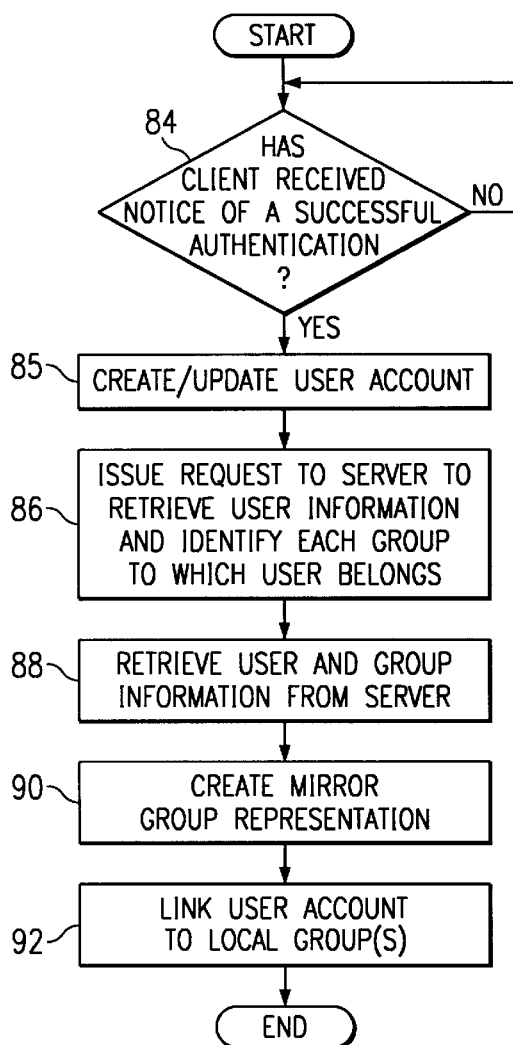
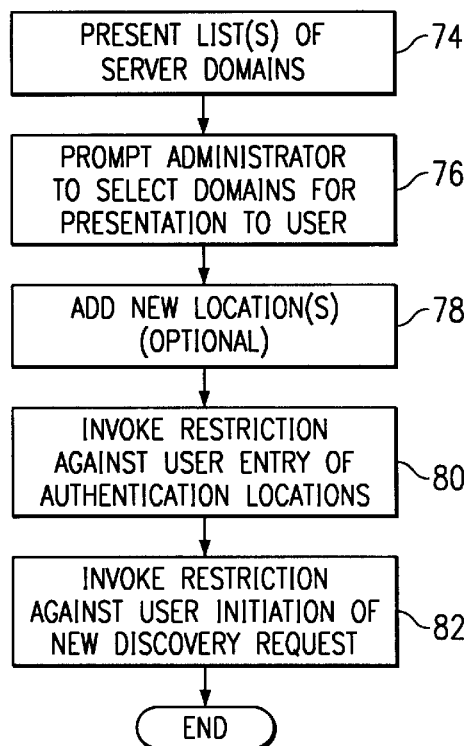


FIG. 8

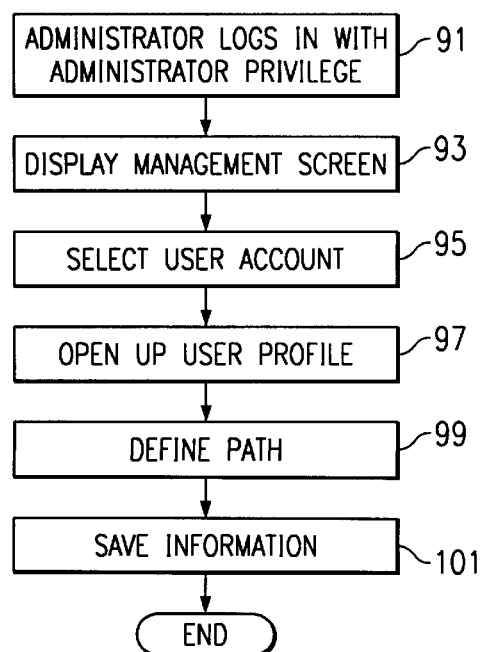


FIG. 9

Explore Litigation Insights

Docket Alarm provides insights to develop a more informed litigation strategy and the peace of mind of knowing you're on top of things.

Real-Time Litigation Alerts



Keep your litigation team up-to-date with **real-time alerts** and advanced team management tools built for the enterprise, all while greatly reducing PACER spend.

Our comprehensive service means we can handle Federal, State, and Administrative courts across the country.

Advanced Docket Research



With over 230 million records, Docket Alarm's cloud-native docket research platform finds what other services can't. Coverage includes Federal, State, plus PTAB, TTAB, ITC and NLRB decisions, all in one place.

Identify arguments that have been successful in the past with full text, pinpoint searching. Link to case law cited within any court document via Fastcase.

Analytics At Your Fingertips



Learn what happened the last time a particular judge, opposing counsel or company faced cases similar to yours.

Advanced out-of-the-box PTAB and TTAB analytics are always at your fingertips.

API

Docket Alarm offers a powerful API (application programming interface) to developers that want to integrate case filings into their apps.

LAW FIRMS

Build custom dashboards for your attorneys and clients with live data direct from the court.

Automate many repetitive legal tasks like conflict checks, document management, and marketing.

FINANCIAL INSTITUTIONS

Litigation and bankruptcy checks for companies and debtors.

E-DISCOVERY AND LEGAL VENDORS

Sync your system to PACER to automate legal marketing.