

CONFIDENTIAL

HAND

Monthly Report December 2010
Eisai Andover PST – Analytical Chemistry
Joe Zhou

1. **THEME: HAND**
2. **OBJECTIVES:**
 - 2.1 **Perform Physicochemical Assessment for E2006 and key Intermediates**
3. **RESULTS AND DISCUSSION:**

3.1 Physicochemical Assessments Were Performed for E2006 and key Intermediates

PXRD indicated that lot E2006 lot AZW-673A (MTD/DRF batch) was the same crystal form as lot GAM-388-2 (see Figure 1).

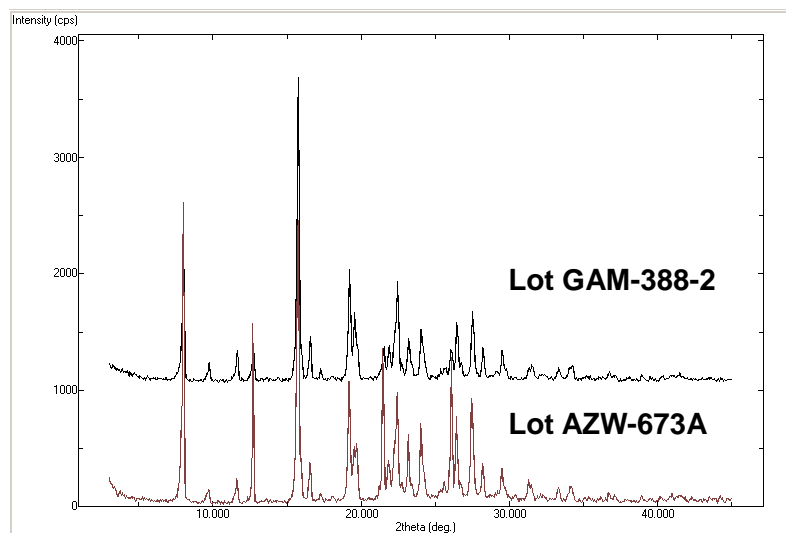
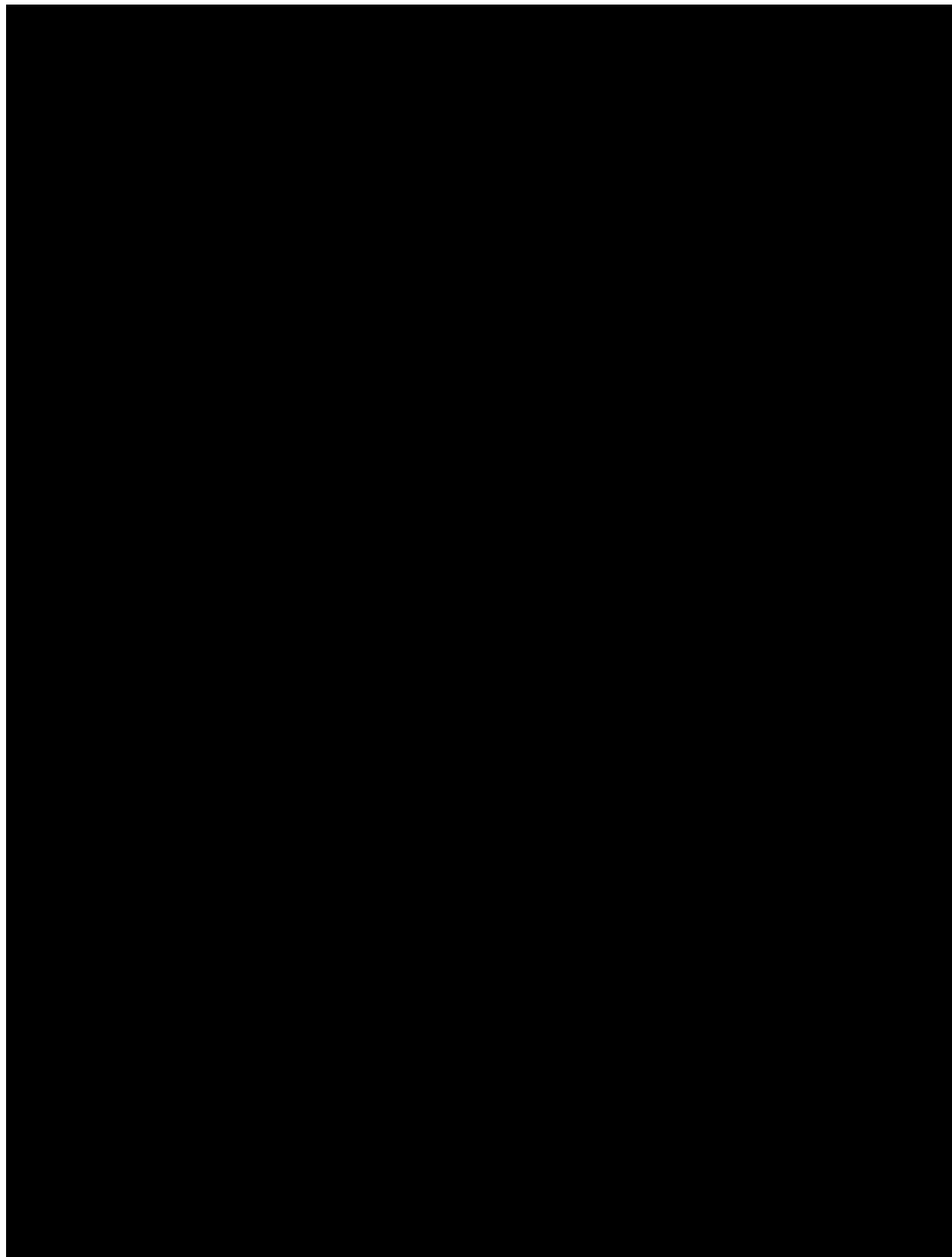
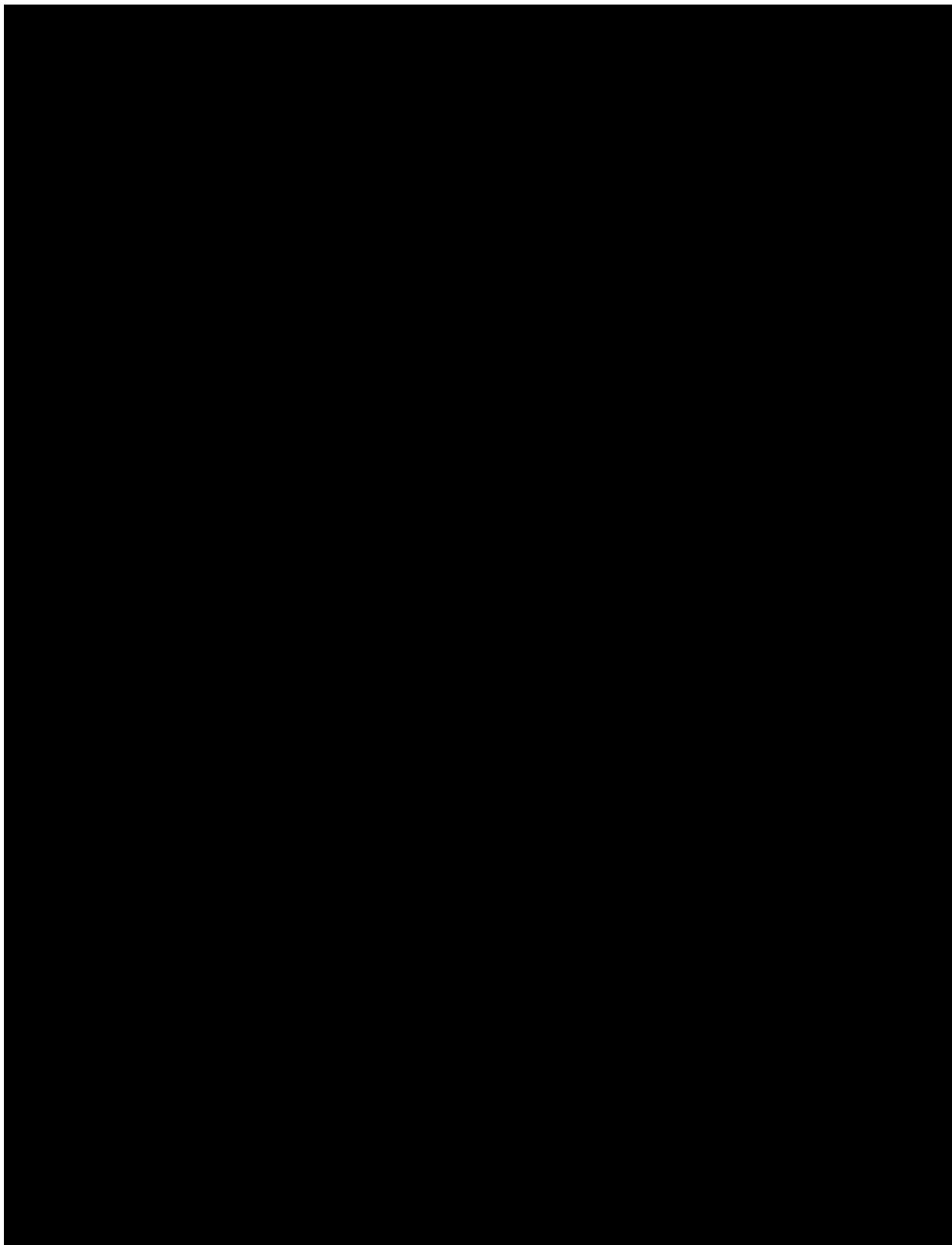


Figure 1: PXRD of E2006

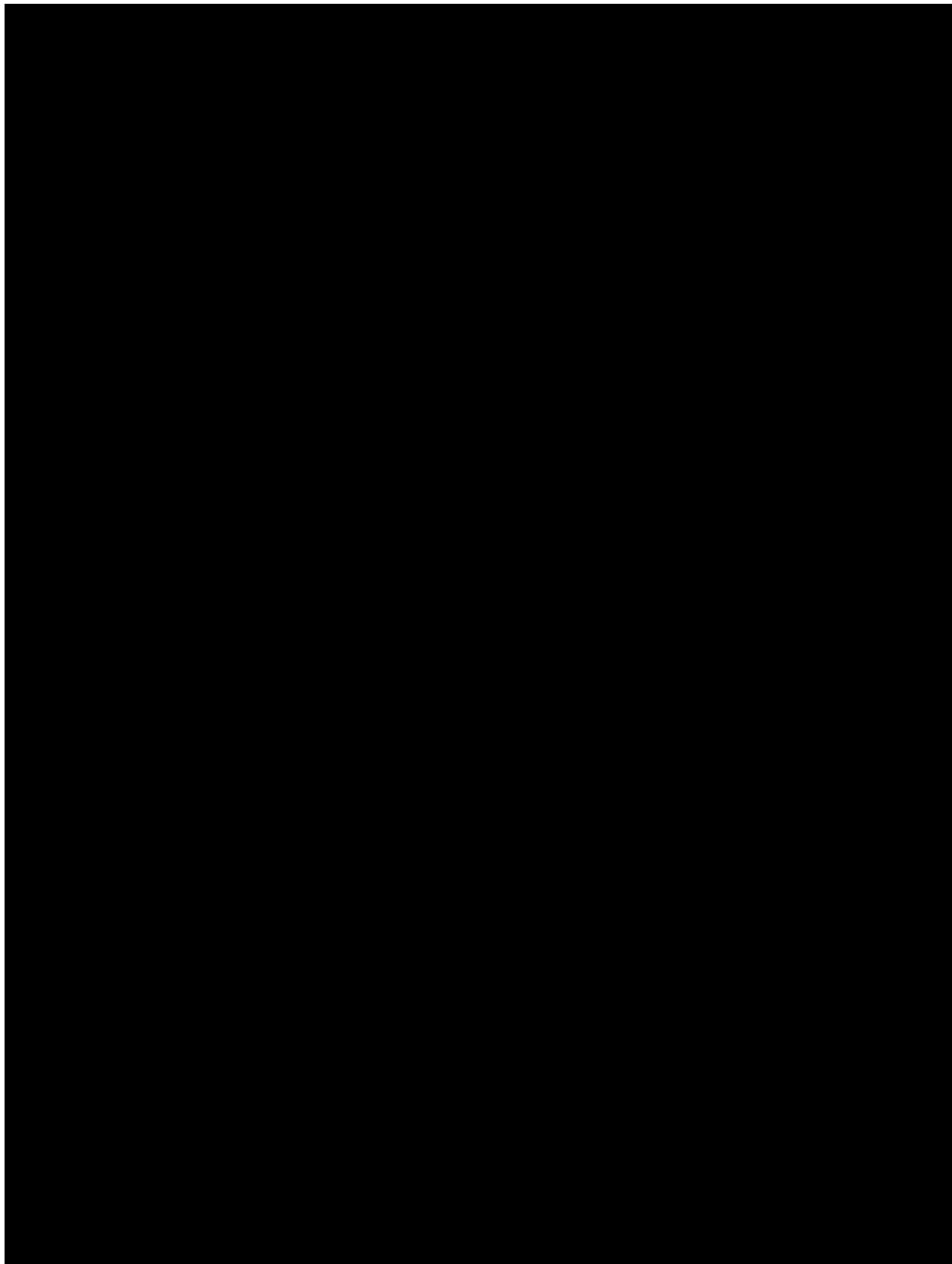
CONFIDENTIAL



CONFIDENTIAL



CONFIDENTIAL



CONFIDENTIAL

