

# United States Patent [19]

## Henry

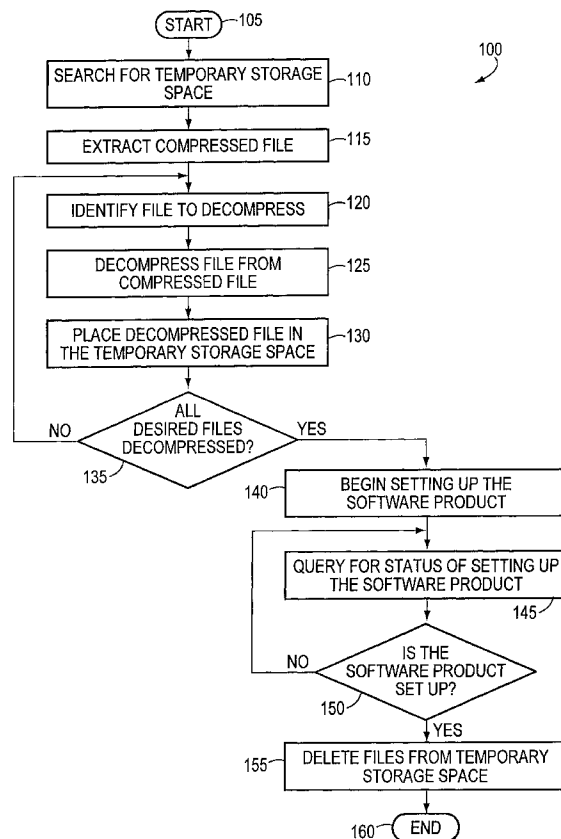
[11] **Patent Number:** **6,131,192**[45] **Date of Patent:** **Oct. 10, 2000**[54] **SOFTWARE INSTALLATION**[75] Inventor: **Craig James Henry**, Woodinville, Wash.[73] Assignee: **Microsoft Corporation**, Redmond, Wash.[21] Appl. No.: **09/099,903**[22] Filed: **Jun. 18, 1998**[51] **Int. Cl.**<sup>7</sup> ..... **G06F 9/445**[52] **U.S. Cl.** ..... **717/11; 707/101; 707/203**[58] **Field of Search** ..... **395/712; 713/1, 713/100, 101; 707/100, 200, 203, 205; 711/170, 171, 205**[56] **References Cited****U.S. PATENT DOCUMENTS**

5,999,740 12/1999 Rowley ..... 395/712

*Primary Examiner*—Tariq R. Hafiz*Assistant Examiner*—Kakali Chaki*Attorney, Agent, or Firm*—Jones & Askew LLP[57] **ABSTRACT**

An executable file contains materials necessary for the installation of a software product, and the executable file is executed to provide a compressed file and a shell program

module. The shell program module locates a suitable temporary storage space, extracts the compressed file from the initial executable file, and places the compressed file in the temporary storage space. The initial executable file causes a second executable file to be extracted from the compressed file and executed, so that a setup program module is run. In response to execution of the setup program module, files are sequentially decompressed from the compressed file. A newly decompressed file may initially be placed in the temporary storage space, and the decompressing is paused until that newly decompressed file is copied to a target storage space. The newly decompressed file may be renamed or decompressed while being copied to the target storage space. Thereafter, that newly decompressed file is deleted from the temporary directory. This process is repeated until multiple files originating from the compressed file are in their respective directory of a directory tree created in the target directory. Alternatively, newly decompressed files may be placed directly in the target storage space. Thereafter, the setup program module prepares the data and information on the computer so that the software product will work with the computer and its attached devices. Once the setup program module is no longer running, files remaining in the temporary storage space as a result of execution of the shell program module are deleted from the temporary storage space, and execution of the shell program module is terminated.

**15 Claims, 6 Drawing Sheets**

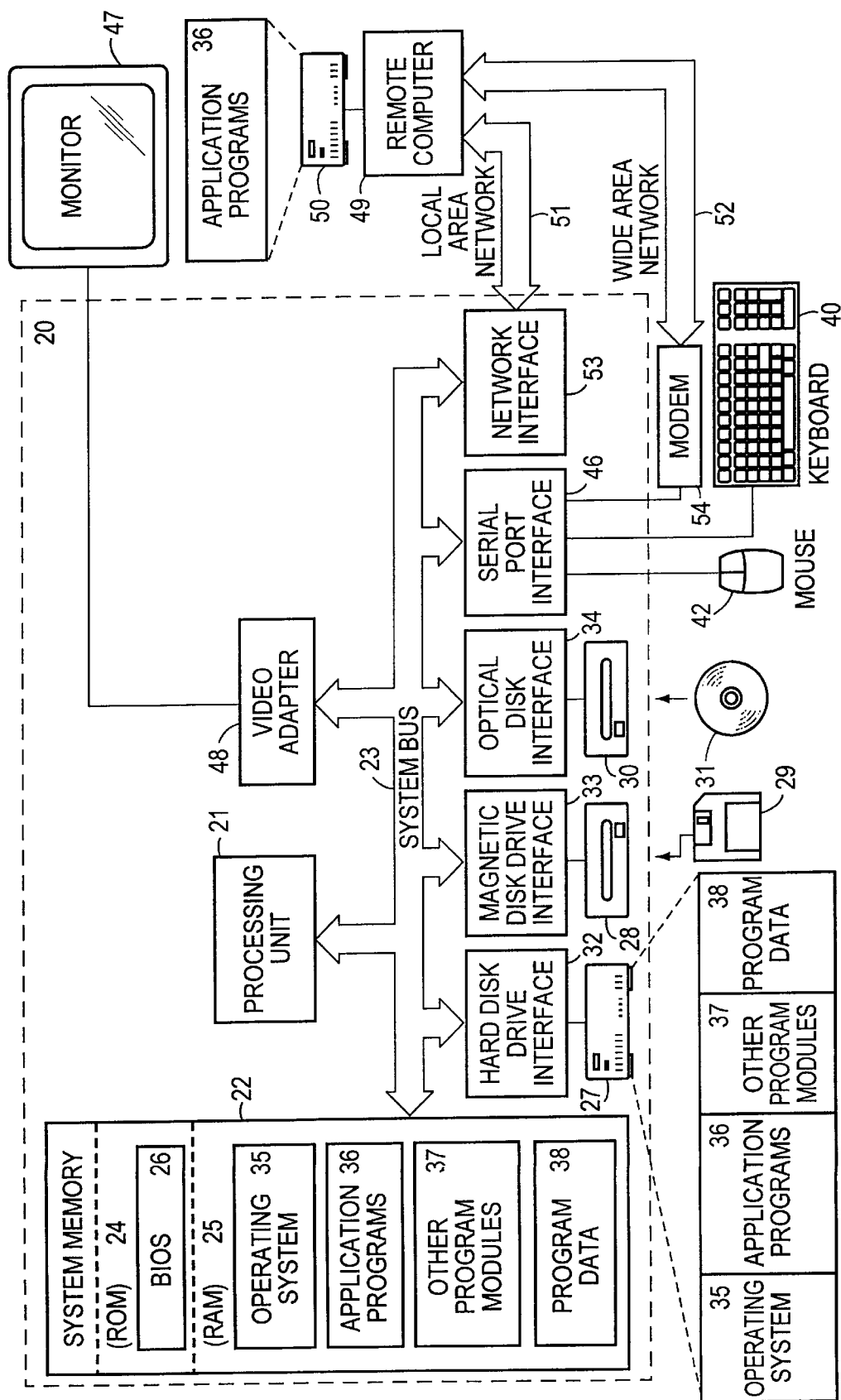


FIG. 1

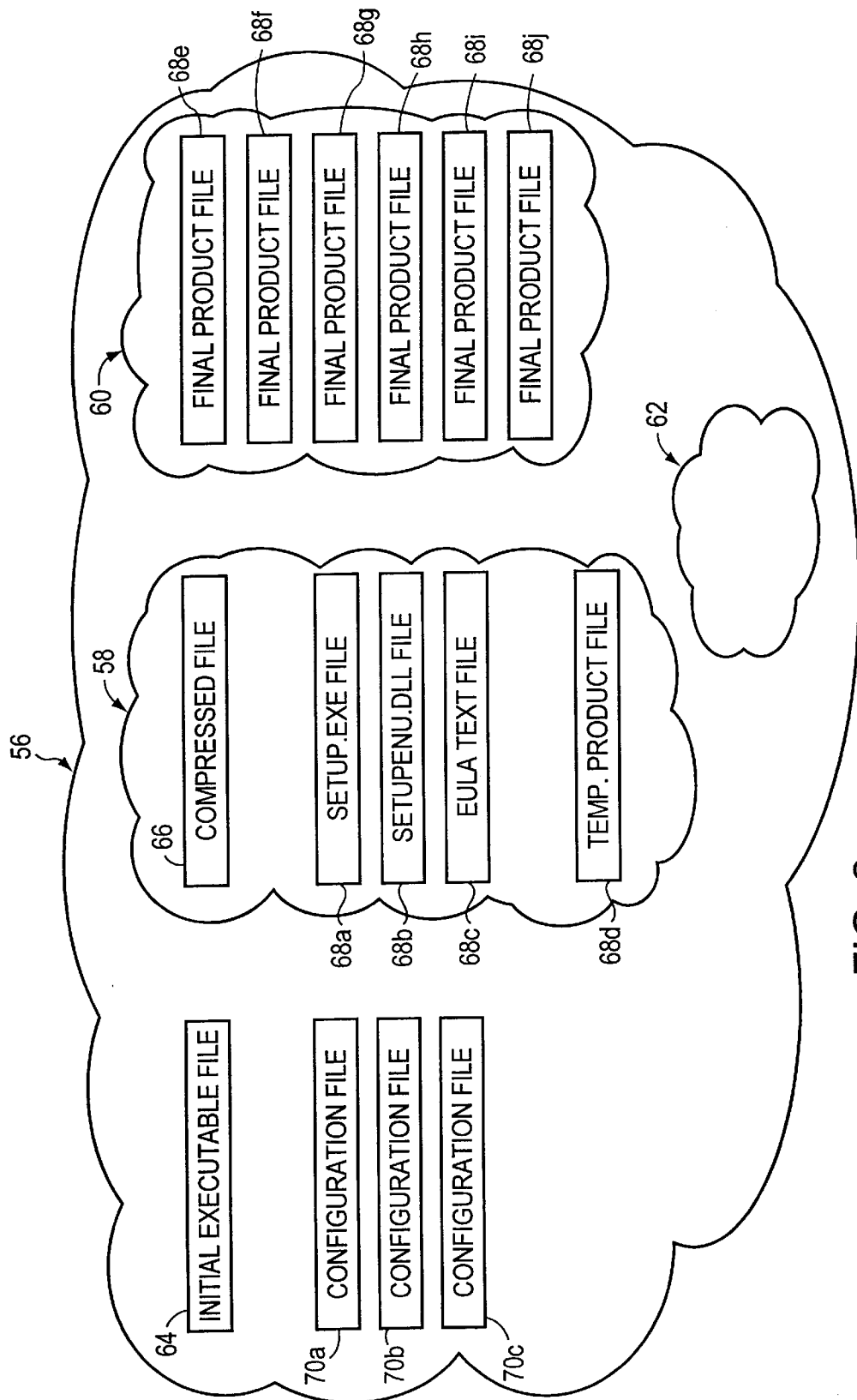


FIG. 2

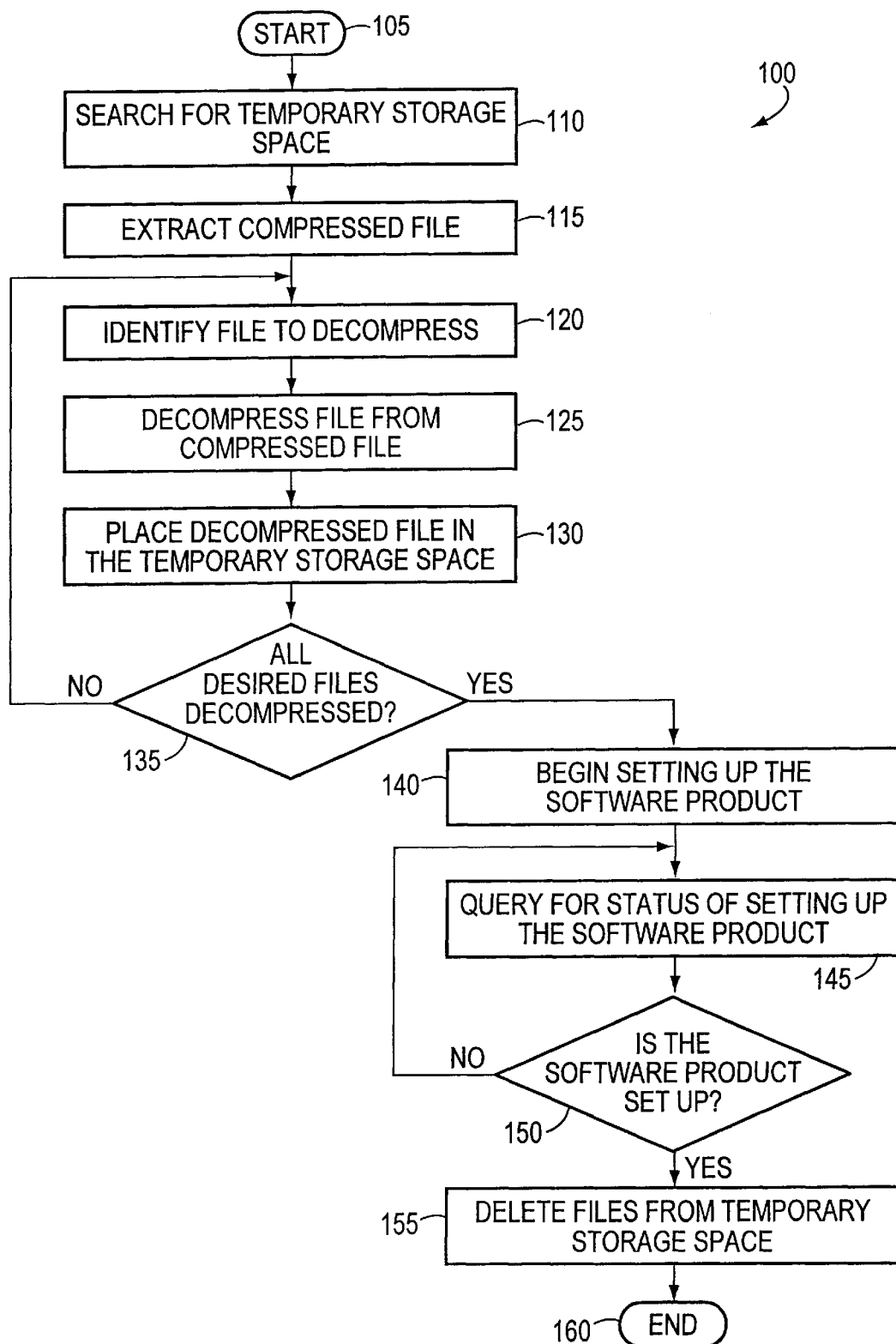


FIG. 3

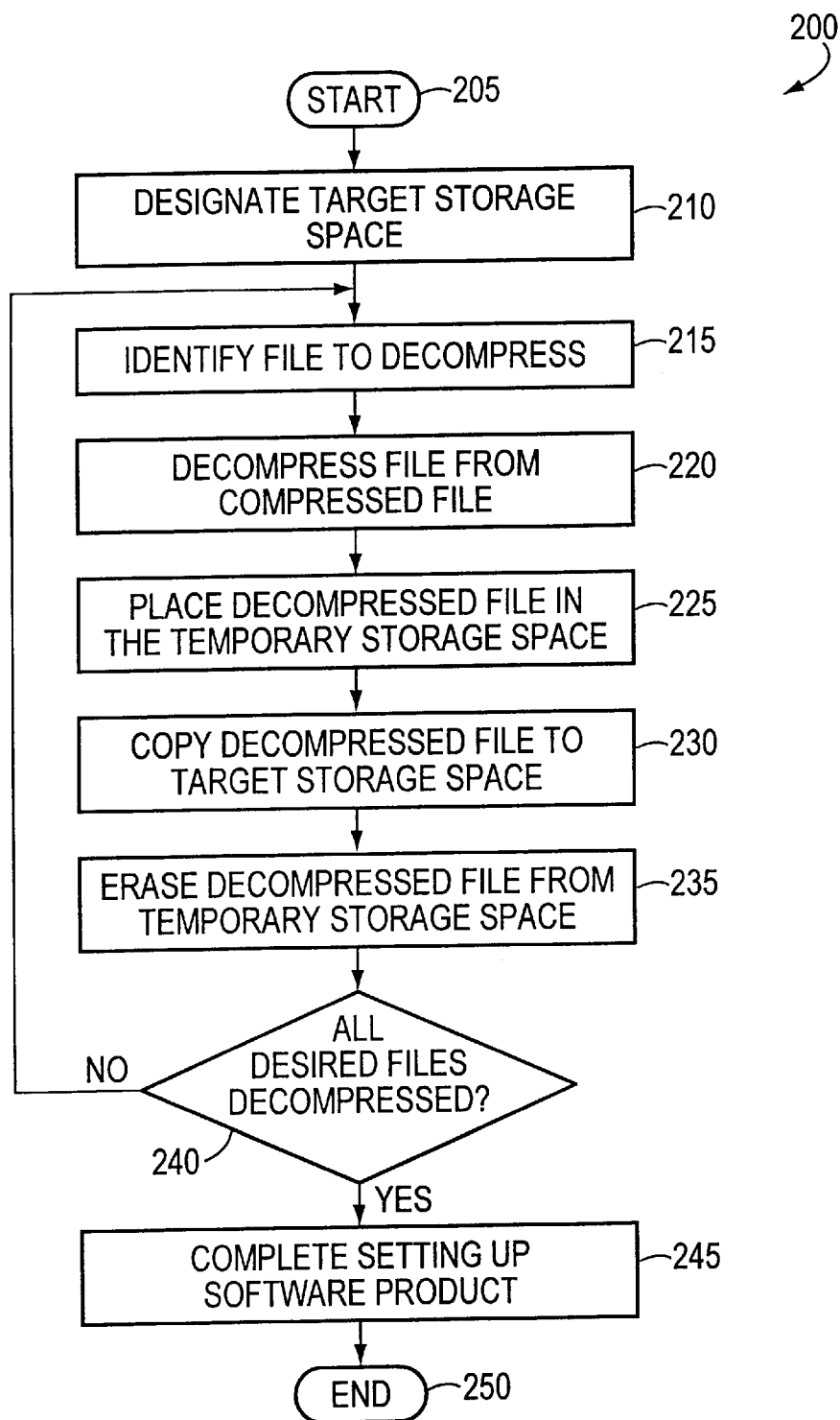


FIG. 4A



# Explore Litigation Insights

Docket Alarm provides insights to develop a more informed litigation strategy and the peace of mind of knowing you're on top of things.

## Real-Time Litigation Alerts



Keep your litigation team up-to-date with **real-time alerts** and advanced team management tools built for the enterprise, all while greatly reducing PACER spend.

Our comprehensive service means we can handle Federal, State, and Administrative courts across the country.

## Advanced Docket Research



With over 230 million records, Docket Alarm's cloud-native docket research platform finds what other services can't. Coverage includes Federal, State, plus PTAB, TTAB, ITC and NLRB decisions, all in one place.

Identify arguments that have been successful in the past with full text, pinpoint searching. Link to case law cited within any court document via Fastcase.

## Analytics At Your Fingertips



Learn what happened the last time a particular judge, opposing counsel or company faced cases similar to yours.

Advanced out-of-the-box PTAB and TTAB analytics are always at your fingertips.

## API

Docket Alarm offers a powerful API (application programming interface) to developers that want to integrate case filings into their apps.

## LAW FIRMS

Build custom dashboards for your attorneys and clients with live data direct from the court.

Automate many repetitive legal tasks like conflict checks, document management, and marketing.

## FINANCIAL INSTITUTIONS

Litigation and bankruptcy checks for companies and debtors.

## E-DISCOVERY AND LEGAL VENDORS

Sync your system to PACER to automate legal marketing.