



US006981048B1

(12) **United States Patent**
Abdolbaghian et al.

(10) **Patent No.:** **US 6,981,048 B1**
(45) **Date of Patent:** **Dec. 27, 2005**

(54) **KEEP-ALIVE MESSAGING WHEN TWO APPLICATIONS ARE RUNNING**

(75) Inventors: **Soheila Abdolbaghian**, Irvine, CA (US); **Tuan Nguyen**, Laguna Hills, CA (US)

(73) Assignee: **Toshiba America Information Systems, Inc.**, Irvine, CA (US)

(*) Notice: Subject to any disclaimer, the term of this patent is extended or adjusted under 35 U.S.C. 154(b) by 563 days.

(21) Appl. No.: **09/721,498**

(22) Filed: **Nov. 22, 2000**
(Under 37 CFR 1.47)

(51) Int. Cl.⁷ **G06F 15/16**

(52) U.S. Cl. **709/228; 709/203; 709/223; 709/227**

(58) Field of Search 704/200–203, 704/223–228, 231–232; 714/51, 55, 4

(56) **References Cited**

U.S. PATENT DOCUMENTS

6,006,259 A * 12/1999 Adelman et al. 709/223

6,112,320 A * 8/2000 Dien 714/51
6,134,588 A * 10/2000 Guenther et al. 709/226
6,434,612 B1 * 8/2002 Hughes et al. 709/223
6,463,078 B1 * 10/2002 Engstrom et al. 709/203
6,557,038 B1 * 4/2003 Becker et al. 709/227
6,567,852 B2 * 5/2003 Besaw et al. 709/228

* cited by examiner

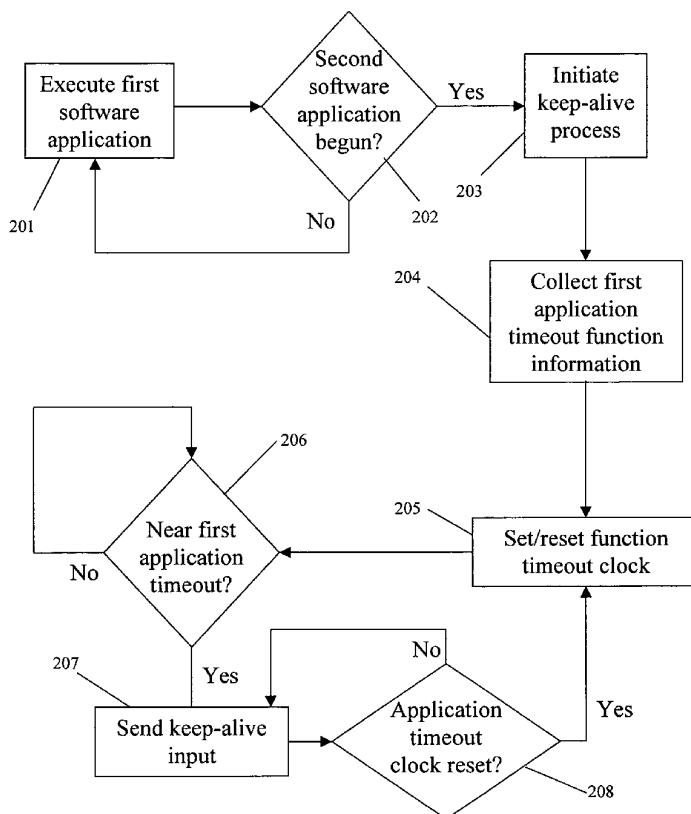
Primary Examiner—Bharat Barot

(74) *Attorney, Agent, or Firm*—Pillsbury Winthrop Shaw Pittman LLP

(57) **ABSTRACT**

The present invention is generally directed to a system and method in which a second application (the “keep-alive function”) sends a ping, message or other signal to a first application to prevent the first application from being timed out (hereinafter, “keep-alive input”). In an embodiment of the invention, the first application is queried as to the appropriate content and format of a timeout period restart message. The keep-alive function may be automatically executed upon the occurrence of a triggering event. The keep-alive function may, periodically or based on a timeout clock related to the first application, check the status of the first application and/or send a keep-alive input.

27 Claims, 4 Drawing Sheets



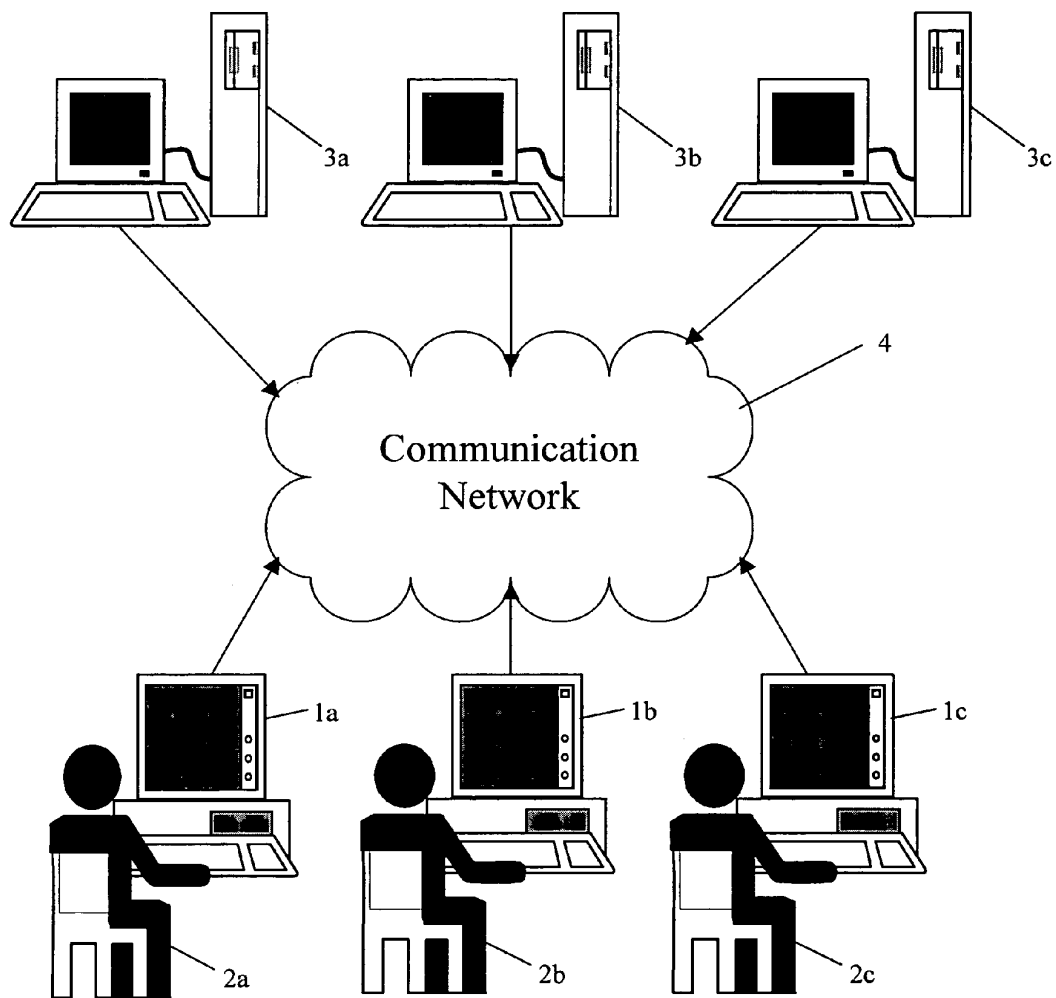


FIGURE 1

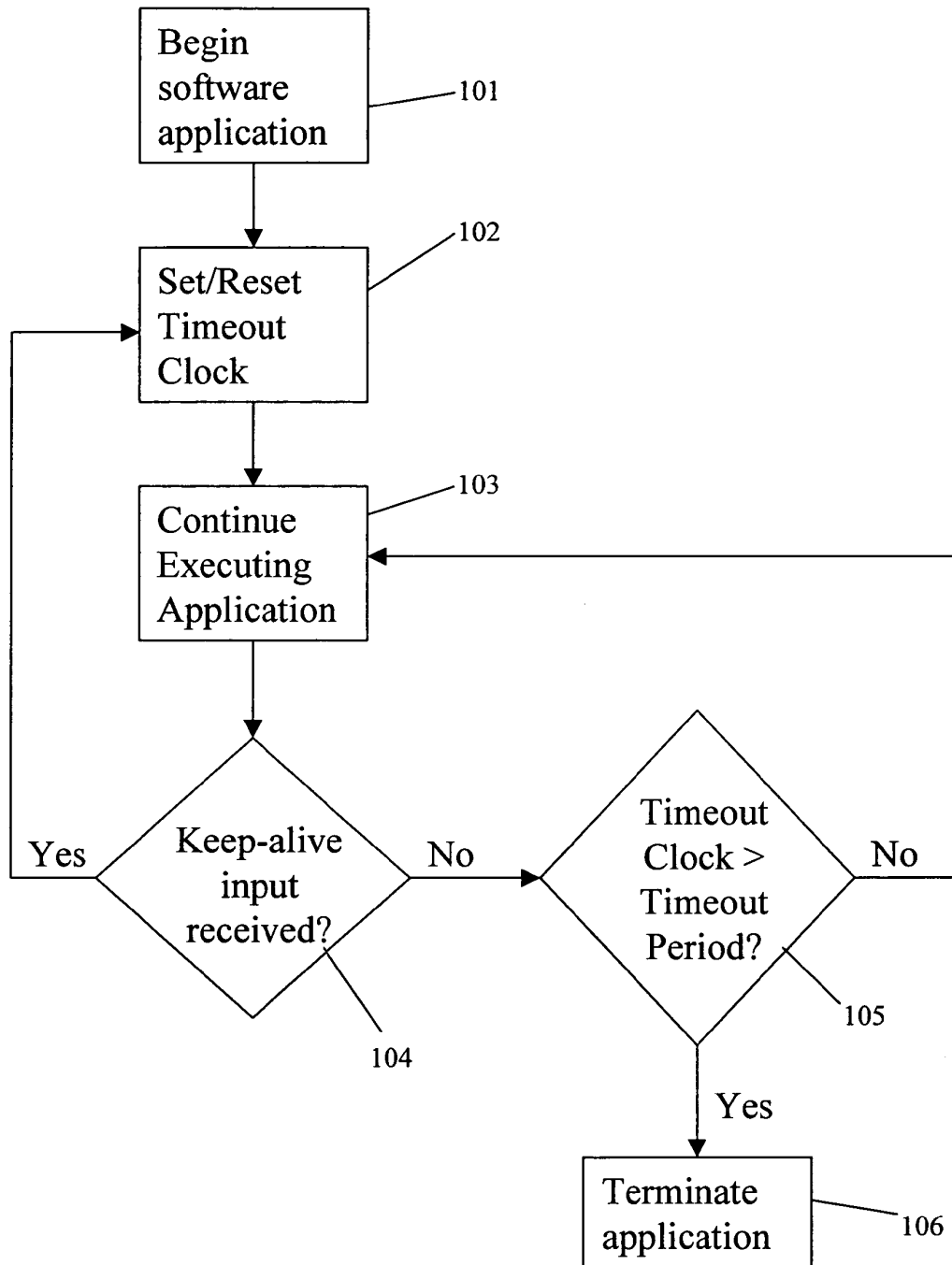


FIGURE 2

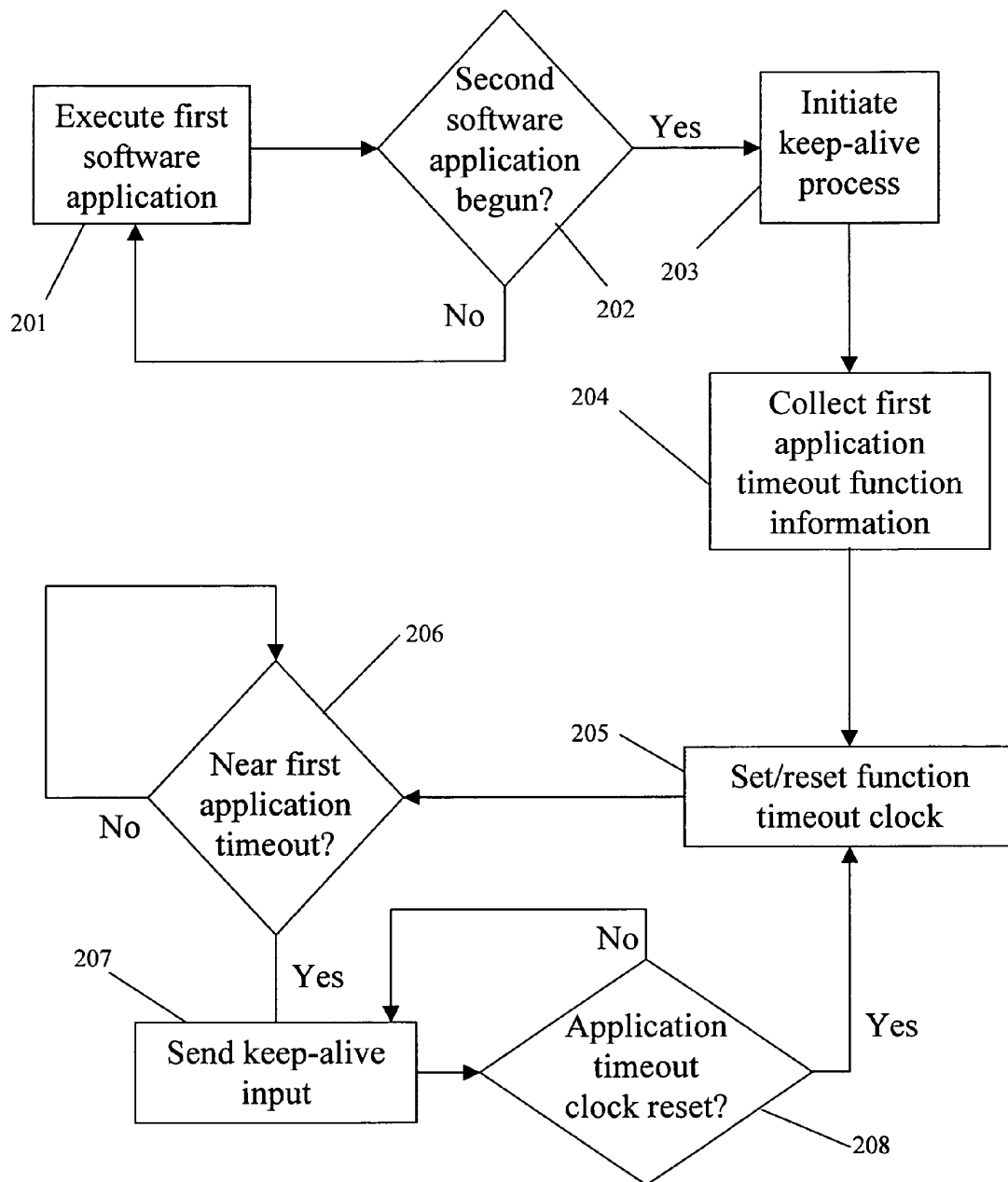


FIGURE 3

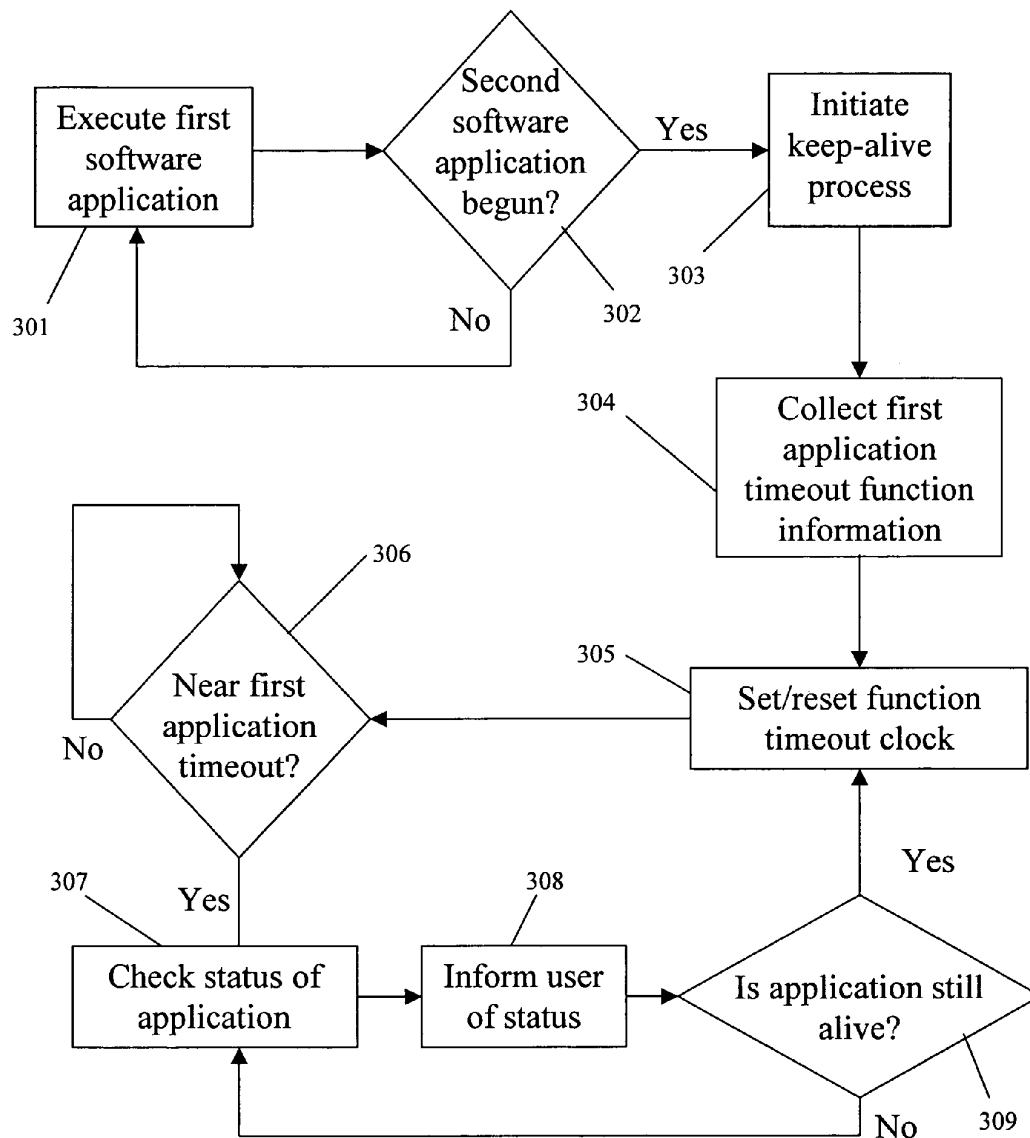


FIGURE 4

Explore Litigation Insights

Docket Alarm provides insights to develop a more informed litigation strategy and the peace of mind of knowing you're on top of things.

Real-Time Litigation Alerts



Keep your litigation team up-to-date with **real-time alerts** and advanced team management tools built for the enterprise, all while greatly reducing PACER spend.

Our comprehensive service means we can handle Federal, State, and Administrative courts across the country.

Advanced Docket Research



With over 230 million records, Docket Alarm's cloud-native docket research platform finds what other services can't. Coverage includes Federal, State, plus PTAB, TTAB, ITC and NLRB decisions, all in one place.

Identify arguments that have been successful in the past with full text, pinpoint searching. Link to case law cited within any court document via Fastcase.

Analytics At Your Fingertips



Learn what happened the last time a particular judge, opposing counsel or company faced cases similar to yours.

Advanced out-of-the-box PTAB and TTAB analytics are always at your fingertips.

API

Docket Alarm offers a powerful API (application programming interface) to developers that want to integrate case filings into their apps.

LAW FIRMS

Build custom dashboards for your attorneys and clients with live data direct from the court.

Automate many repetitive legal tasks like conflict checks, document management, and marketing.

FINANCIAL INSTITUTIONS

Litigation and bankruptcy checks for companies and debtors.

E-DISCOVERY AND LEGAL VENDORS

Sync your system to PACER to automate legal marketing.