



US009762515B1

(12) **United States Patent**
Olivares et al.

(10) **Patent No.:** **US 9,762,515 B1**
(45) **Date of Patent:** **Sep. 12, 2017**

(54) **INTERACTIVE ONLINE ENTERTAINMENT
SYSTEM AND METHOD**

(56) **References Cited**

U.S. PATENT DOCUMENTS

- (71) Applicants: **Eddy Olivares**, Guangzhou (CN); **Dan Liu**, Guangzhou (CN)
(72) Inventors: **Eddy Olivares**, Guangzhou (CN); **Dan Liu**, Guangzhou (CN)
(73) Assignee: **Danxiao Information Technology Ltd.**, Guangdong (CN)

6,368,268 B1 * 4/2002 Sandvick A61H 19/44
600/38
6,786,863 B2 * 9/2004 Abbasi G06F 3/016
600/38
7,347,815 B2 * 3/2008 Serbanescu A61H 19/34
600/38
7,395,126 B2 * 7/2008 Decker G08C 17/00
700/17

(Continued)

- (*) Notice: Subject to any disclaimer, the term of this patent is extended or adjusted under 35 U.S.C. 154(b) by 0 days.

OTHER PUBLICATIONS

"Lovense Interactive Sex Toys for Cam Models", URL: <https://web.archive.org/web/20160302191610/http://Lovense.com/cam-model/> pp. 1-4, Mar. 2, 2016.*

Primary Examiner — Nay Tun

(74) Attorney, Agent, or Firm — Steinberg Intellectual Property Law LLC; Gloria M. Steinberg, Esq.

(21) Appl. No.: **15/143,513**

(22) Filed: **Apr. 30, 2016**

(51) **Int. Cl.**

G08C 19/16 (2006.01)
H04L 12/58 (2006.01)
H04W 4/00 (2009.01)
H04L 12/18 (2006.01)
H04L 29/08 (2006.01)

(52) **U.S. Cl.**

CPC **H04L 51/046** (2013.01); **H04L 12/1813** (2013.01); **H04L 67/025** (2013.01); **H04W 4/008** (2013.01)

(58) **Field of Classification Search**

CPC A61H 19/44; A61H 19/50; A61H 2201/5007; A61H 2201/5012; A61H 19/32; A61H 19/34; A61H 19/40; A61H 2205/086; A61F 5/00; A61F 5/41; A63F 13/12; A63F 13/218; A63F 13/285; A63F 2300/302; H04L 67/02; H04L 67/025; H04L 67/04; H04L 67/12; H04L 67/38; H04L 51/046; H04L 12/1813; H04W 84/00; H04W 4/008

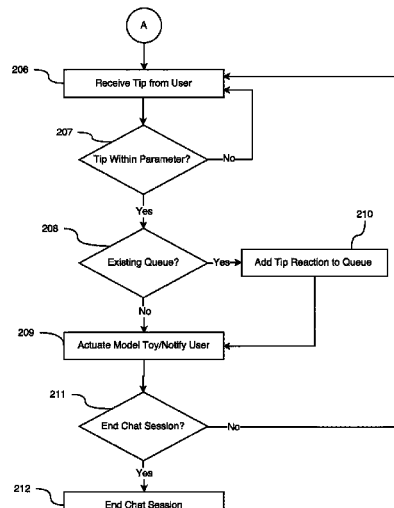
See application file for complete search history.

(57)

ABSTRACT

Disclosed is a system and method for allowing one or more users to interact with models from a distance, for example, by enabling the users to tip the models during online video chat sessions, wherein the models can define tipping parameters to perform predefined acts, via an adult toy, based on the amount of tips received. The adult toy can be Wi-Fi or Bluetooth™ enabled to receive commands directly from the server via a web browser extension, the website hosting an online video chat session, or connect to an application installed on a device operated by the model, wherein the application communicates with the web browser extension to relay commands to the adult toy therefrom. In some embodiments, the browser extension or website can generate live control links to enable certain users have a live control of the model's adult toy.

18 Claims, 10 Drawing Sheets



(56)

References Cited

U.S. PATENT DOCUMENTS

8,378,794	B2 *	2/2013	Alarcon	A61H 19/32 340/407.1
8,608,644	B1	12/2013	Davig	
8,936,544	B2 *	1/2015	Shahoian	A61H 19/30 600/38
2002/0083179	A1	6/2002	Shaw	
2004/0082831	A1	4/2004	Kobashikawa	
2004/0132439	A1	7/2004	Tyagi	
2004/0167855	A1 *	8/2004	Cambridge	A61H 19/32 705/42
2005/0027794	A1 *	2/2005	Decker	G08C 17/00 709/201
2006/0015560	A1	1/2006	Macauley	
2006/0106466	A1 *	5/2006	Decker	H04L 67/125 700/1
2007/0055096	A1 *	3/2007	Berry	A61H 19/44 600/38
2007/0202941	A1 *	8/2007	Miltenberger	G07F 17/32 463/25
2008/0119767	A1 *	5/2008	Berry	A61H 19/34 601/46
2009/0099413	A1 *	4/2009	Kobashikawa	A61H 19/34 600/38
2009/0258688	A1 *	10/2009	Yoshizawa	G07F 17/32 463/11
2011/0133910	A1 *	6/2011	Alarcon	A61H 19/32 340/407.1
2014/0370957	A1 *	12/2014	Hadida	G07F 17/32 463/17

* cited by examiner

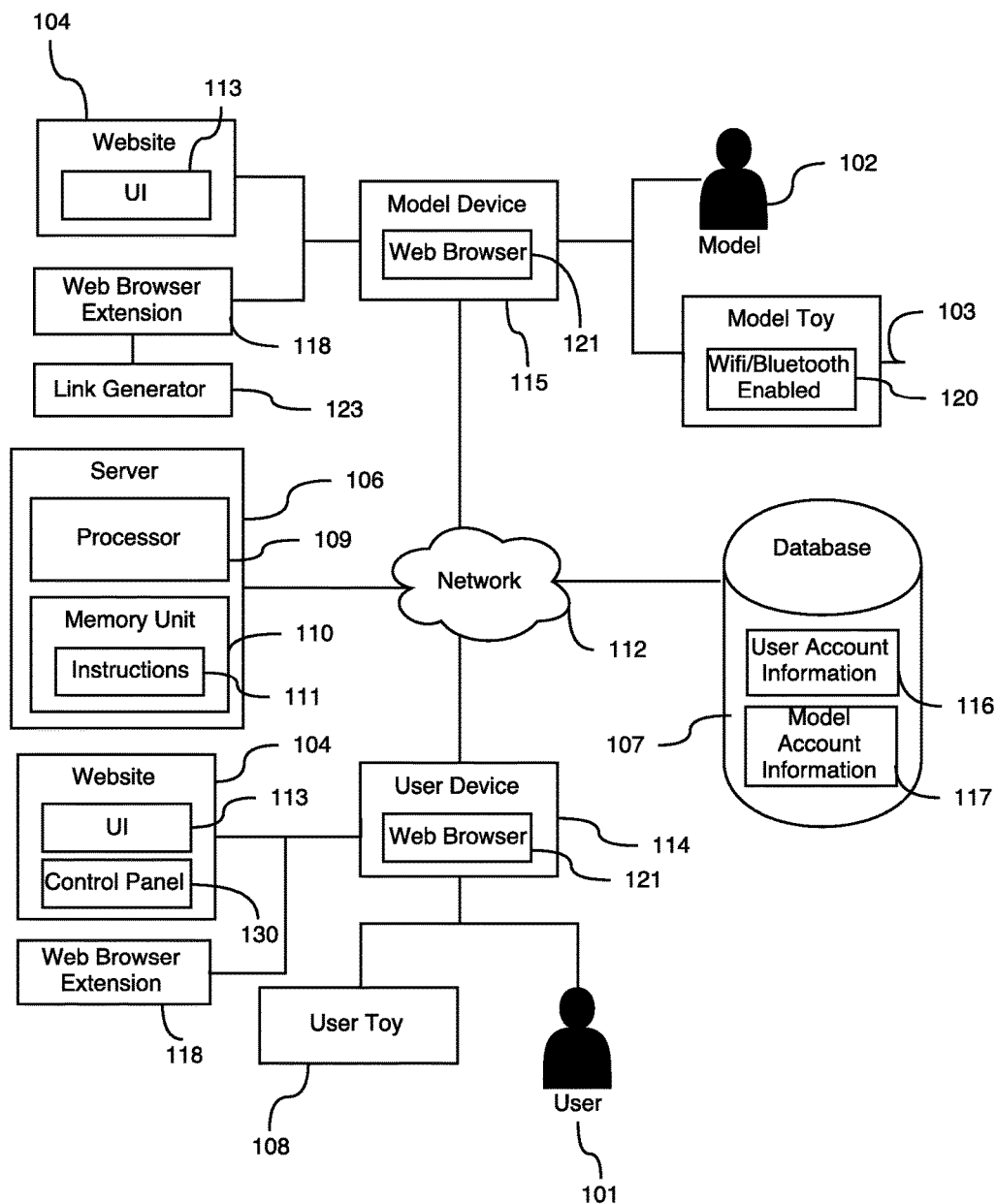


FIG. 1

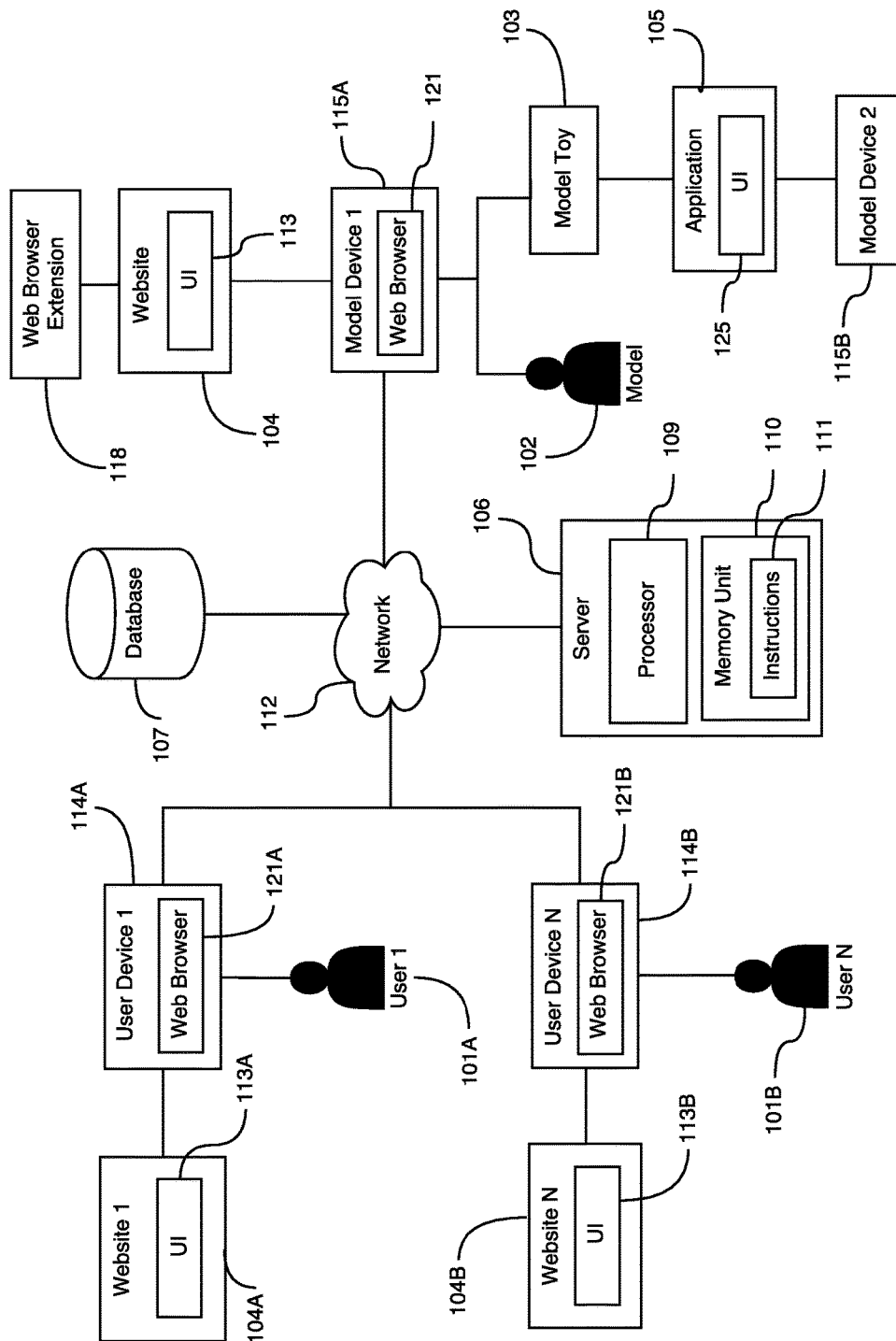


FIG. 2

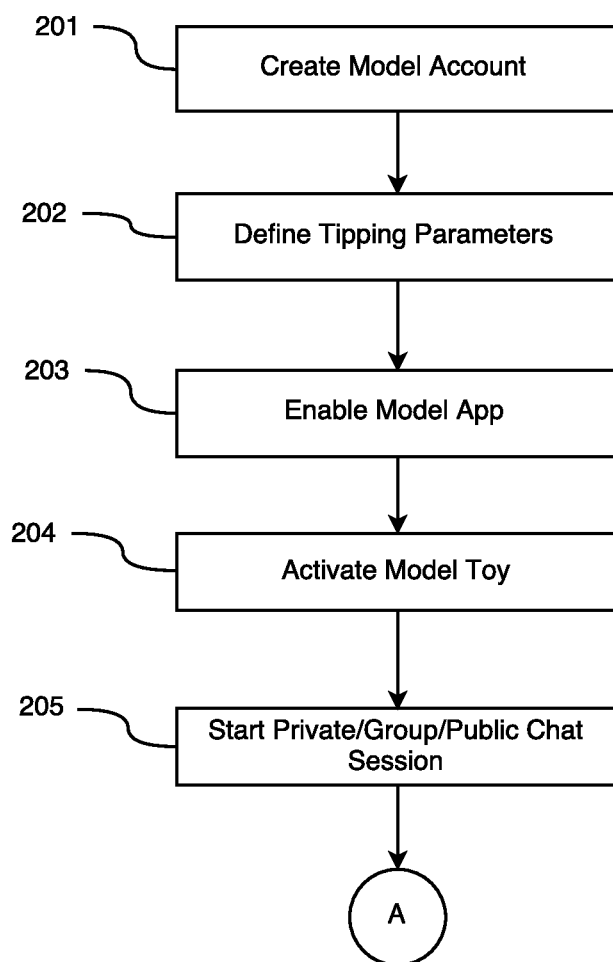


FIG. 3A

Explore Litigation Insights

Docket Alarm provides insights to develop a more informed litigation strategy and the peace of mind of knowing you're on top of things.

Real-Time Litigation Alerts



Keep your litigation team up-to-date with **real-time alerts** and advanced team management tools built for the enterprise, all while greatly reducing PACER spend.

Our comprehensive service means we can handle Federal, State, and Administrative courts across the country.

Advanced Docket Research



With over 230 million records, Docket Alarm's cloud-native docket research platform finds what other services can't. Coverage includes Federal, State, plus PTAB, TTAB, ITC and NLRB decisions, all in one place.

Identify arguments that have been successful in the past with full text, pinpoint searching. Link to case law cited within any court document via Fastcase.

Analytics At Your Fingertips



Learn what happened the last time a particular judge, opposing counsel or company faced cases similar to yours.

Advanced out-of-the-box PTAB and TTAB analytics are always at your fingertips.

API

Docket Alarm offers a powerful API (application programming interface) to developers that want to integrate case filings into their apps.

LAW FIRMS

Build custom dashboards for your attorneys and clients with live data direct from the court.

Automate many repetitive legal tasks like conflict checks, document management, and marketing.

FINANCIAL INSTITUTIONS

Litigation and bankruptcy checks for companies and debtors.

E-DISCOVERY AND LEGAL VENDORS

Sync your system to PACER to automate legal marketing.