
EXHIBIT B

Application of U.S. Patent No. 9,696,847 Samsung's mobile devices

*** This claim chart is meant to be illustrative for purposes of meeting Plaintiff's pleading obligations and should not be construed as binding or limiting**

Claim 13

Evidence of Infringement

13. A user interface method, comprising:

Samsung makes, uses, imports, sells and/or offers for sale Android smartphones that perform the methods claimed by U.S. Patent No. 9,696,847. For example, Samsung Android smartphones implement the method of claim 13 when configuring or implementing Pattern Lock.

Set Up a Basic Screen Lock

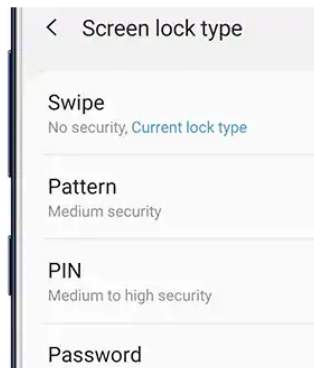
To ensure your phone's security, you can set up a password, PIN, or Pattern. That way, even if someone gets their hands on your phone, they won't be able to access it.

From **Settings**, swipe to and touch **Lock screen**. Then, touch **Screen lock type** and select your desired type of lock. Follow the on-screen instructions to set it up.

Here are the basic Screen lock types:

- **Swipe:** Swipe the screen to unlock it.
- **Pattern:** Create a pattern that you draw on the screen to unlock.
- **PIN:** Select a PIN to unlock the screen.
- **Password:** Create a password for unlocking the screen.
- **None:** No screen lock.

<https://www.samsung.com/us/support/answer/ANS00078955/>



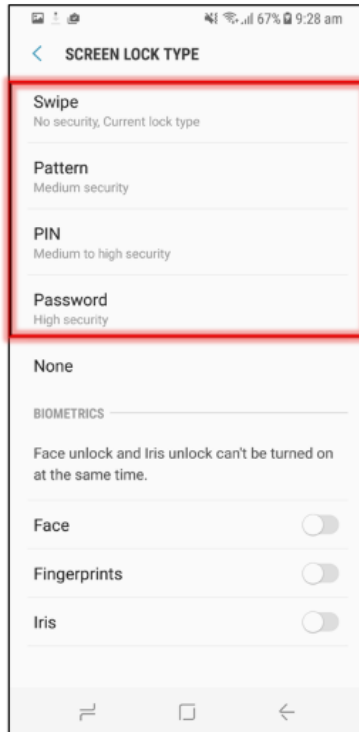
Claim 13

Evidence of Infringement

defining an enablement protocol for a function of an electronic device, said enablement protocol comprising a user-defined gesture for touch input on a touch-sensitive area of a display screen operatively associated with said electronic device by displaying at least two visual indicators on the touch-sensitive area of the display screen indicative of a plurality of different possible gestures and inputting the user-defined gesture which includes a continuous touch which terminates at one of the at least two visual indicators on the touch-sensitive area of the display screen for the enablement protocol;

Samsung smartphones define an enablement protocol for a function of an electronic device when a user sets a pattern for pattern lock.

3 Select the Screen lock type you wish to use.



<https://www.samsung.com/au/support/mobile-devices/how-to-set-a-pattern-pin-or-on-your-lock-screen/>

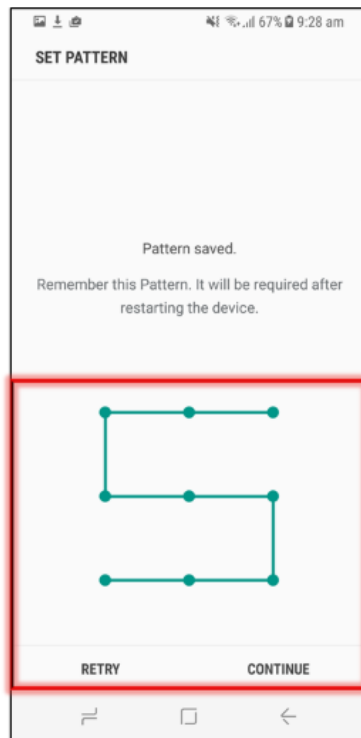
Claim 13

Evidence of Infringement

defining an enablement protocol for a function of an electronic device, said enablement protocol comprising a user-defined gesture for touch input on a touch-sensitive area of a display screen operatively associated with said electronic device by displaying at least two visual indicators on the touch-sensitive area of the display screen indicative of a plurality of different possible gestures and inputting the user-defined gesture which includes a continuous touch which terminates at one of the at least two visual indicators on the touch-sensitive area of the display screen for the enablement protocol;

The pattern is a user-defined gesture for touch input on the touch screen of an LG smar

4 As an example, Pattern lock type was created. Tap Continue repeat the step and then ta



<https://www.samsung.com/au/support/mobile-devices/how-to-set-a-pattern-pin-or-on-your-lock-screen/>

Explore Litigation Insights

Docket Alarm provides insights to develop a more informed litigation strategy and the peace of mind of knowing you're on top of things.

Real-Time Litigation Alerts



Keep your litigation team up-to-date with **real-time alerts** and advanced team management tools built for the enterprise, all while greatly reducing PACER spend.

Our comprehensive service means we can handle Federal, State, and Administrative courts across the country.

Advanced Docket Research



With over 230 million records, Docket Alarm's cloud-native docket research platform finds what other services can't. Coverage includes Federal, State, plus PTAB, TTAB, ITC and NLRB decisions, all in one place.

Identify arguments that have been successful in the past with full text, pinpoint searching. Link to case law cited within any court document via Fastcase.

Analytics At Your Fingertips



Learn what happened the last time a particular judge, opposing counsel or company faced cases similar to yours.

Advanced out-of-the-box PTAB and TTAB analytics are always at your fingertips.

API

Docket Alarm offers a powerful API (application programming interface) to developers that want to integrate case filings into their apps.

LAW FIRMS

Build custom dashboards for your attorneys and clients with live data direct from the court.

Automate many repetitive legal tasks like conflict checks, document management, and marketing.

FINANCIAL INSTITUTIONS

Litigation and bankruptcy checks for companies and debtors.

E-DISCOVERY AND LEGAL VENDORS

Sync your system to PACER to automate legal marketing.