

EXHIBIT D



US007958215B2

(12) **United States Patent**
Herbeck et al.

(10) **Patent No.:** **US 7,958,215 B2**
(45) **Date of Patent:** **Jun. 7, 2011**

(54) **SYSTEM MANAGEMENT USING REAL TIME COLLABORATION**

(75) Inventors: **David Gerard Herbeck**, Rochester, MN (US); **Susette Marie Townsend**, Rochester, MN (US)

(73) Assignee: **International Business Machines Corporation**, Armonk, NY (US)

(*) Notice: Subject to any disclaimer, the term of this patent is extended or adjusted under 35 U.S.C. 154(b) by 2104 days.

(21) Appl. No.: **10/365,298**

(22) Filed: **Feb. 12, 2003**

(65) **Prior Publication Data**

US 2004/0158629 A1 Aug. 12, 2004

(51) **Int. Cl.**
G06F 15/173 (2006.01)

(52) **U.S. Cl.** **709/223**; 709/224; 709/226; 709/227; 379/265.01; 379/265.02

(58) **Field of Classification Search** 709/222, 709/224, 206, 219, 223; 379/265.01, 265.02
See application file for complete search history.

(56) **References Cited**

U.S. PATENT DOCUMENTS

| | | | | |
|-----------|------|---------|-------------------|-----------|
| 5,563,805 | A * | 10/1996 | Arbuckle et al. | 709/204 |
| 5,815,554 | A * | 9/1998 | Burgess et al. | 379/90.01 |
| 6,064,304 | A * | 5/2000 | Arrowsmith et al. | 709/224 |
| 6,128,646 | A * | 10/2000 | Miloslavsky | 709/206 |
| 6,223,165 | B1 * | 4/2001 | Lauffer | 705/1 |
| 6,327,677 | B1 * | 12/2001 | Garg et al. | 709/224 |

| | | | | |
|--------------|------|---------|-------------------|------------|
| 6,430,602 | B1 | 8/2002 | Kay et al. | 709/206 |
| 6,449,344 | B1 | 9/2002 | Goldfinger et al. | 379/88.17 |
| 6,513,013 | B1 * | 1/2003 | Stephanou | 705/1 |
| 6,535,492 | B2 * | 3/2003 | Shtivelman | 370/270 |
| 6,631,412 | B1 * | 10/2003 | Glasser et al. | 709/224 |
| 6,640,153 | B2 * | 10/2003 | Kwak | 700/138 |
| 6,829,585 | B1 * | 12/2004 | Grewal et al. | 709/223 |
| 6,832,341 | B1 * | 12/2004 | Vijayan | 709/224 |
| 6,868,074 | B1 * | 3/2005 | Hanson | 709/219 |
| 7,024,548 | B1 * | 4/2006 | O'Toole, Jr. | 709/222 |
| 7,072,966 | B1 * | 7/2006 | Benjamin et al. | 709/228 |
| 7,120,647 | B2 * | 10/2006 | Venkatesh et al. | 707/104.1 |
| 7,139,390 | B2 * | 11/2006 | Brown et al. | 379/265.02 |
| 2002/0006191 | A1 * | 1/2002 | Weiss | 379/265.01 |
| 2003/0031309 | A1 * | 2/2003 | Rupe et al. | 379/265.02 |
| 2004/0005048 | A1 * | 1/2004 | Agusta | 379/265.12 |

* cited by examiner

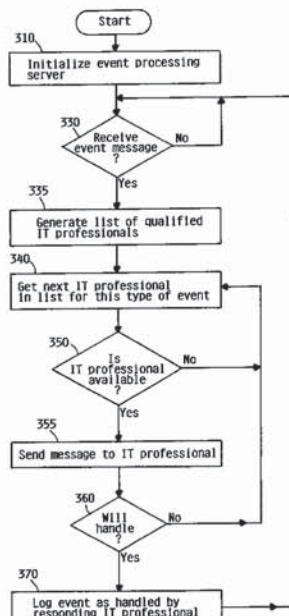
Primary Examiner — Ramy M Osman

(74) *Attorney, Agent, or Firm* — Grant A. Johnson

(57) **ABSTRACT**

The present invention provides a method of improving the response time to IT problems and ensuring that some will respond to a problem. In one embodiment, a management system uses a monitoring system to detect problem conditions with a managed device. When such an event occurs, the managed device sends a message containing a description of the alert to an intelligent agent. In response, the intelligent agent selects an administrator who is both qualified and available to respond to the alert, and then sends an instant message containing the description of the alert to the selected administrator. The administrator may accept responsibility for the alert by sending an instant message acknowledgement back to the intelligent agent. If the intelligent agent does not receive an acknowledgement, it automatically finds another administrator to respond to the alert.

17 Claims, 5 Drawing Sheets



U.S. Patent

Jun. 7, 2011

Sheet 1 of 5

US 7,958,215 B2

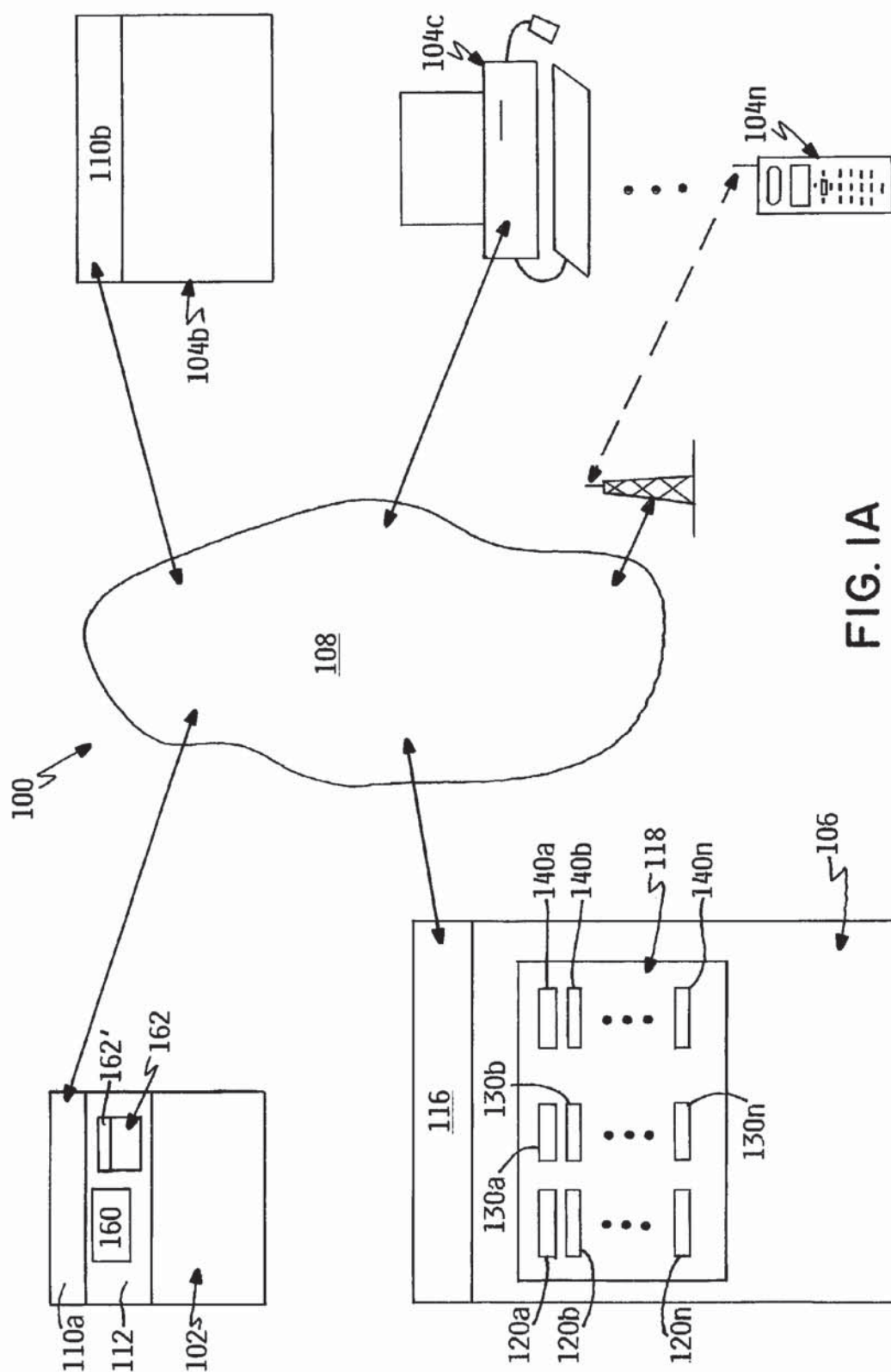


FIG. 1A

U.S. Patent

Jun. 7, 2011

Sheet 2 of 5

US 7,958,215 B2



FIG. IB



FIG. IC



FIG. ID

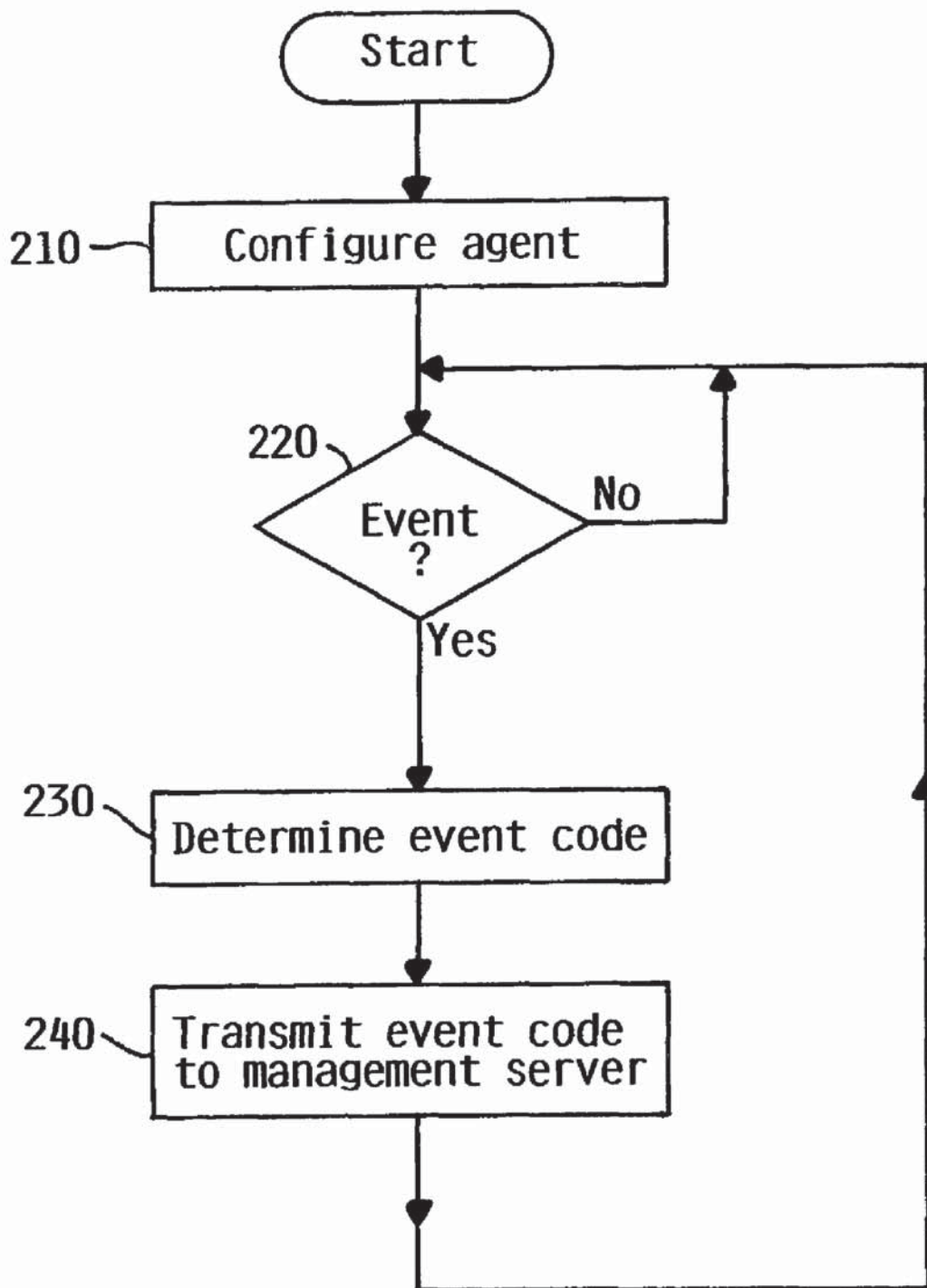


FIG. 2

Explore Litigation Insights

Docket Alarm provides insights to develop a more informed litigation strategy and the peace of mind of knowing you're on top of things.

Real-Time Litigation Alerts



Keep your litigation team up-to-date with **real-time alerts** and advanced team management tools built for the enterprise, all while greatly reducing PACER spend.

Our comprehensive service means we can handle Federal, State, and Administrative courts across the country.

Advanced Docket Research



With over 230 million records, Docket Alarm's cloud-native docket research platform finds what other services can't. Coverage includes Federal, State, plus PTAB, TTAB, ITC and NLRB decisions, all in one place.

Identify arguments that have been successful in the past with full text, pinpoint searching. Link to case law cited within any court document via Fastcase.

Analytics At Your Fingertips



Learn what happened the last time a particular judge, opposing counsel or company faced cases similar to yours.

Advanced out-of-the-box PTAB and TTAB analytics are always at your fingertips.

API

Docket Alarm offers a powerful API (application programming interface) to developers that want to integrate case filings into their apps.

LAW FIRMS

Build custom dashboards for your attorneys and clients with live data direct from the court.

Automate many repetitive legal tasks like conflict checks, document management, and marketing.

FINANCIAL INSTITUTIONS

Litigation and bankruptcy checks for companies and debtors.

E-DISCOVERY AND LEGAL VENDORS

Sync your system to PACER to automate legal marketing.